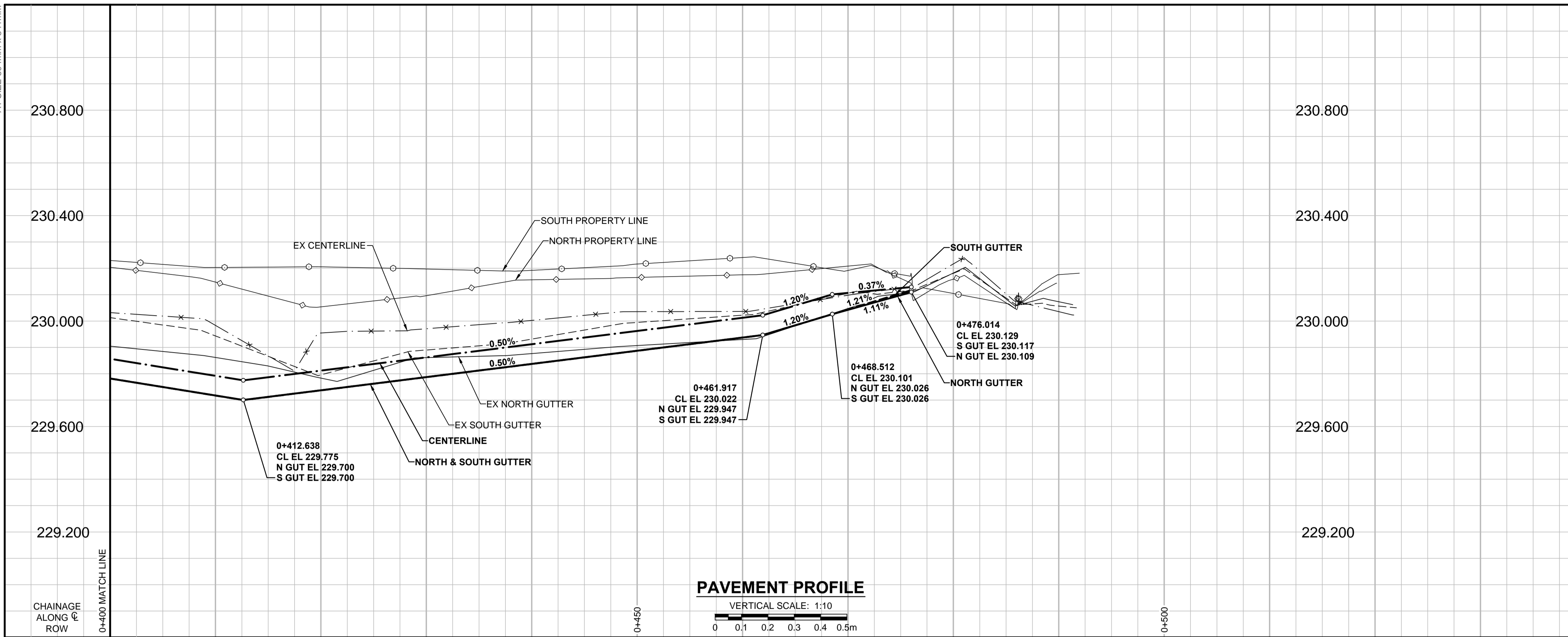
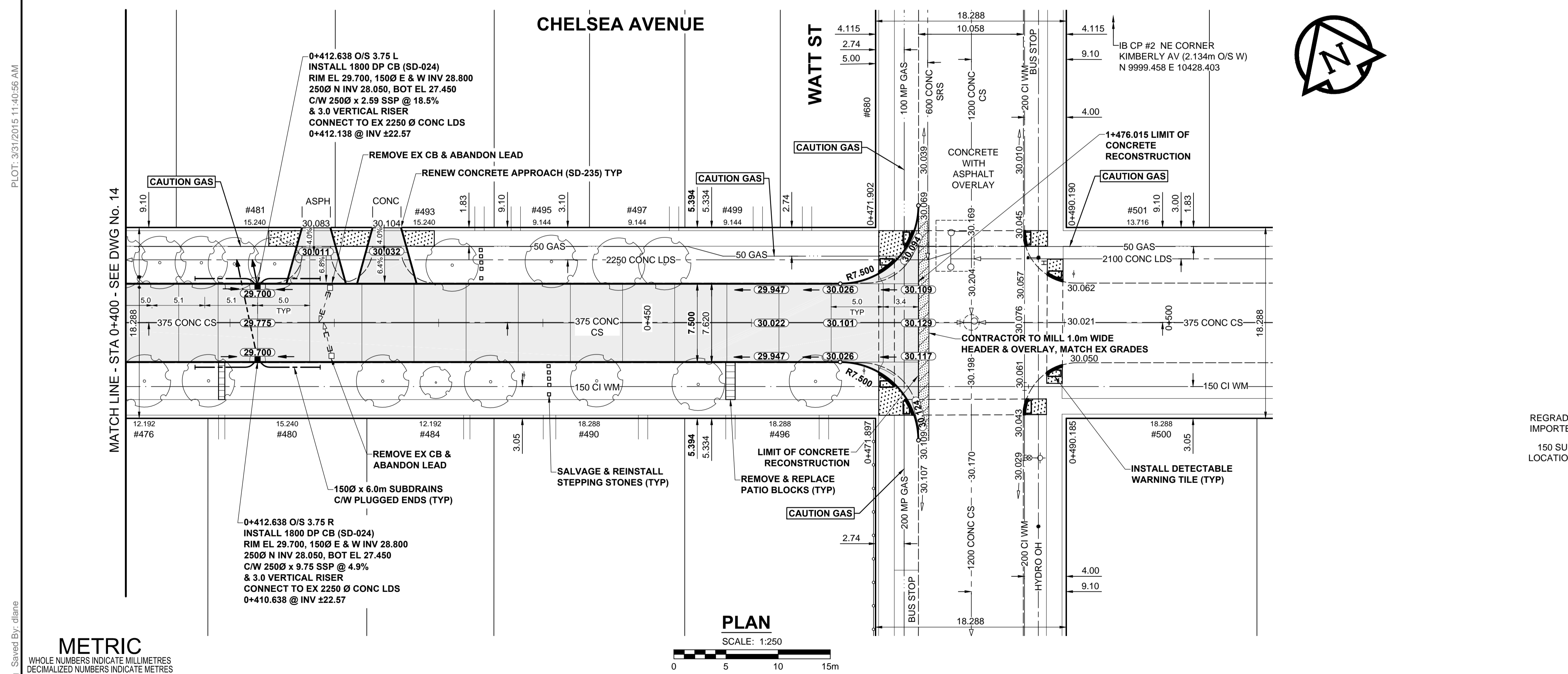


A1 SIZE 594mm x 841mm

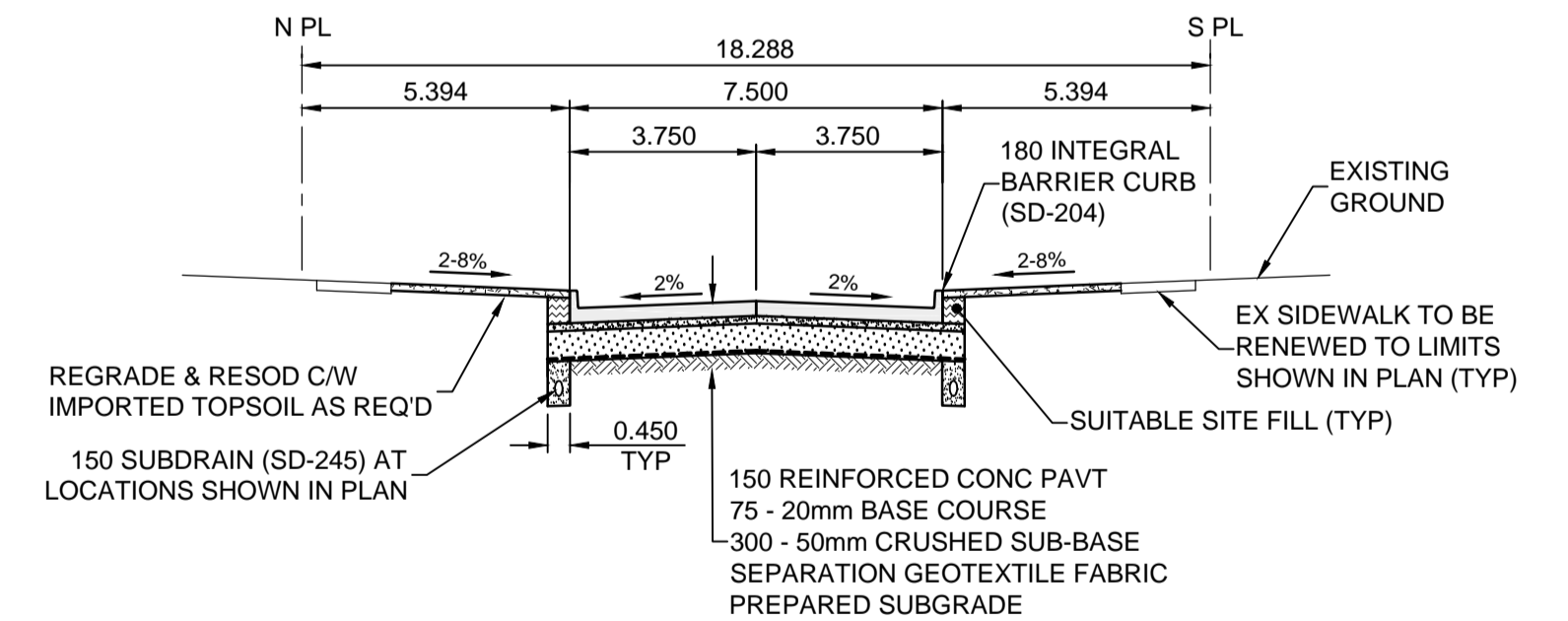


- NOTES**
- ADJUST MH AND CB RIMS TO NEW GRADES.
 - LAMP STANDARDS, HYDRO POLES, AND ANCHORS THAT REQUIRE TEMPORARY SUPPORT, REMOVAL OR REPLACEMENT, TO BE DONE SO AT THE EXPENSE OF THE CONTRACTOR AS NECESSARY.
 - CONTRACTOR TO REGRADE/RENEW EXISTING PRIVATE SIDEWALKS TO LIMITS AS SHOWN. SIDEWALKS TO BE RENEWED WITH CONCRETE UNLESS NOTED OTHERWISE.
 - CONTRACTOR TO TAKE PRECAUTIONARY STEPS TO PROTECT EXISTING TREES WITHIN THE LIMITS OF CONSTRUCTION FROM DAMAGE FROM CONSTRUCTION ACTIVITIES AS OUTLINED IN THE SPECIFICATIONS.
 - CONTRACTOR TO CONFIRM THE LOCATION OF ALL UTILITIES/SERVICES IN THE FIELD PRIOR TO CONSTRUCTION.
 - CB SD-023 & SD-024 OFFSETS ARE DIMENSIONED TO BOC. CB SD-025 OFFSETS ARE DIMENSIONED O/C.
 - ADD 200.000m TO ABBREVIATED ELEVATIONS TO OBTAIN GEODETIC ELEVATIONS.
 - IN GENERAL, PAVEMENT AND SIDEWALK AREAS TO BE REMOVED. MATCH RECONSTRUCTION LIMITS.
 - REFER TO BID OPPORTUNITY FOR DETAILS REGARDING TRAFFIC MANAGEMENT.



CONTROL LINE - COORDINATES

NAME	NORTHING	EASTING
POT 0+080.000	9997.046	9985.097
POT 0+500.000	9818.666	10354.259



TYPICAL PAVEMENT SECTION
CONCRETE PAVEMENT STRUCTURE
SCALE: NTS

METRIC
WHOLE NUMBERS INDICATE MILLIMETRES
DECIMALIZED NUMBERS INDICATE METRES

EXISTING	LEGEND - PLAN	NEW	EXISTING	LEGEND - PLAN	NEW	EXISTING	LEGEND - PLAN	NEW
○	GAS	○	MANHOLE	●	CONCRETE PAVEMENT	□	CATCH BASIN / CATCH PIT	■
—	MTS	□	CATCH BASIN / CATCH PIT	▲	CONC SIDEWALK / MEDIAN	△	CURB INLET WITH BOX	▲
—	HYDRO	△	TEST HOLE	▲	ASPHALT PAVEMENT	○	TREE	▲
—	CATV / FIBRE OPTIC	○	PROPERTY LINE	—	PAVING STONE	○	TEST HOLE	—
—	TRAFFIC SIGNALS / PIT	—	SURVEY BAR	—	GRAVEL	—	PROPERTY LINE	—
—	LAND DRAINAGE SEWER	—	FENCE	—	RAMP CURB	—	SURVEY BAR	—
—	SANITARY/COMBINED SEWER	—	BOC / EDGE OF PAVEMENT	—	PLANING / REMOVAL	—	FENCE	—
—	SEWER SERV/DRAINAGE CONN	—	ELEVATION	—		—	BOC / EDGE OF PAVEMENT	—
—	WATERMAIN	—	TRAFFIC SIGN	—		—	ELEVATION	—
—	SUBDRAIN	—		—		—	TRAFFIC SIGN	—
—	DITCH	—		—		—		—

LOCATION APPROVED UNDERGROUND STRUCTURES

DATE: _____

COMMITTEE: _____

NOTE:
LOCATION OF UNDERGROUND STRUCTURES AS SHOWN ARE BASED ON THE BEST INFORMATION AVAILABLE. BUT NO GUARANTEE IS GIVEN THAT ALL EXISTING UTILITIES ARE SHOWN OR THAT THE GIVEN LOCATIONS ARE EXACT. CONFIRMATION OF EXISTENCE AND EXACT LOCATION OF ALL SERVICES MUST BE OBTAINED FROM THE INDIVIDUAL UTILITIES BEFORE PROCEEDING WITH CONSTRUCTION.

GBM 12-062
ELEV 230.128

N.E. Cor. Watt St. & Kimberly Ave., Tht. on top of 0.05 m dia. x 2.4 non pipe, 0.3 m W. of E.L. of Watt St. & on N.E. of Kimberly Ave.

B	ISSUED FOR TENDER	15/03/16	GFC
A	ISSUED FOR CITY REVIEW	15/03/16	GFC
No.	REVISIONS	YYMMDD	BY

PROFESSIONAL'S SEAL

PROVINCE OF MANITOBA

G.F. COOLIDGE
Member
24465

REGISTERED PROFESSIONAL ENGINEER

CONSULTANT DRAWING No.
W150004 Chelsea-PP-03.dwg

THE CITY OF WINNIPEG
PUBLIC WORKS DEPARTMENT
ENGINEERING DIVISION

2015 LOCAL STREET & ALLEY RENEWAL PROGRAM

CHELSEA AVENUE
ROCH ST TO WATT ST
CONCRETE RECONSTRUCTION
HORIZONTAL AND VERTICAL ALIGNMENT
STA 0+400 TO STA 0+510

CITY DRAWING NUMBER: N/A
SHEET 15 OF 39
DRAWING No. 15
REV B

FILE NAME: W150004.Chelsea-PP-03.dwg Saved By: diane

BID OPPORTUNITY No. 19-2015