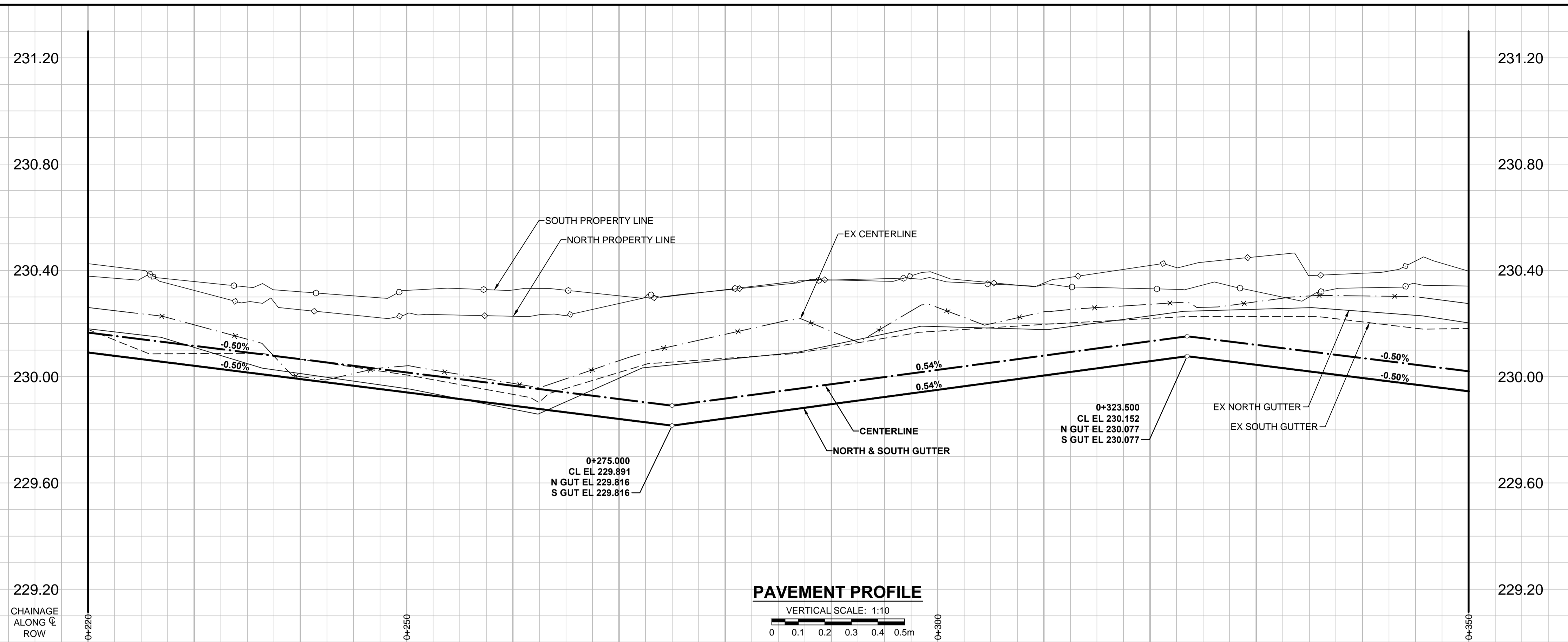
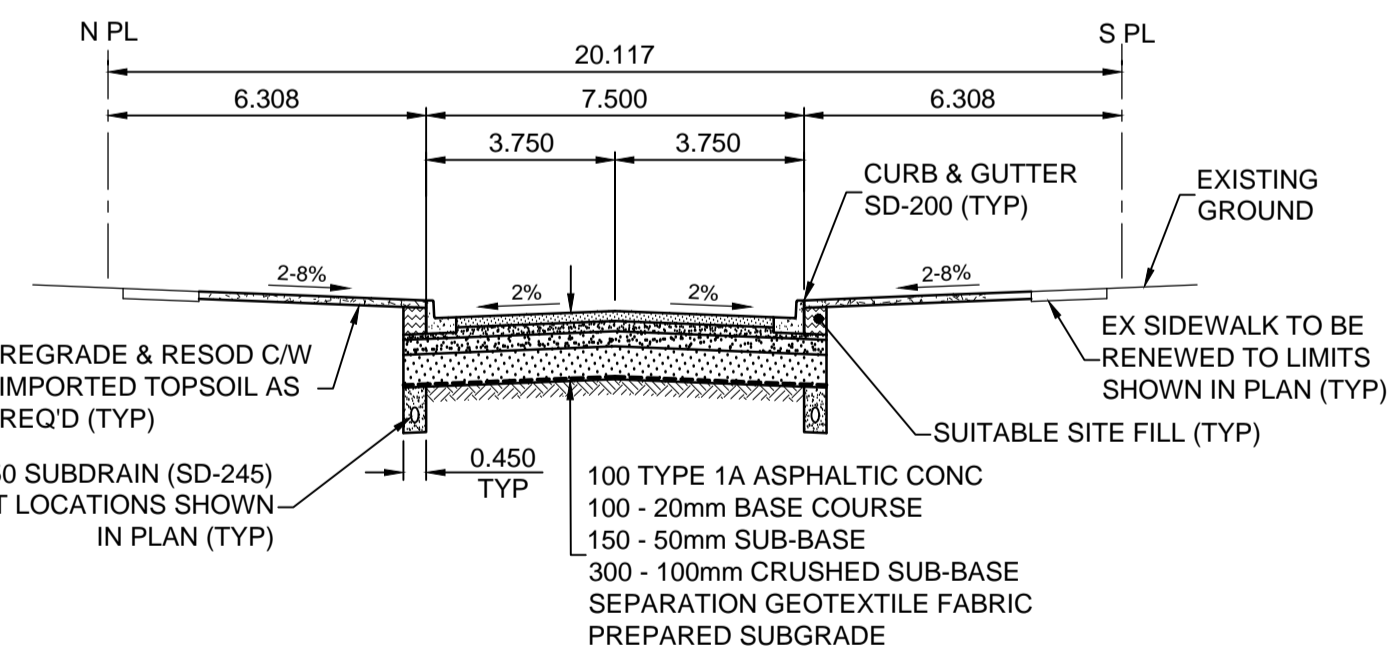
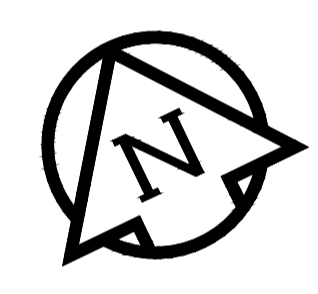
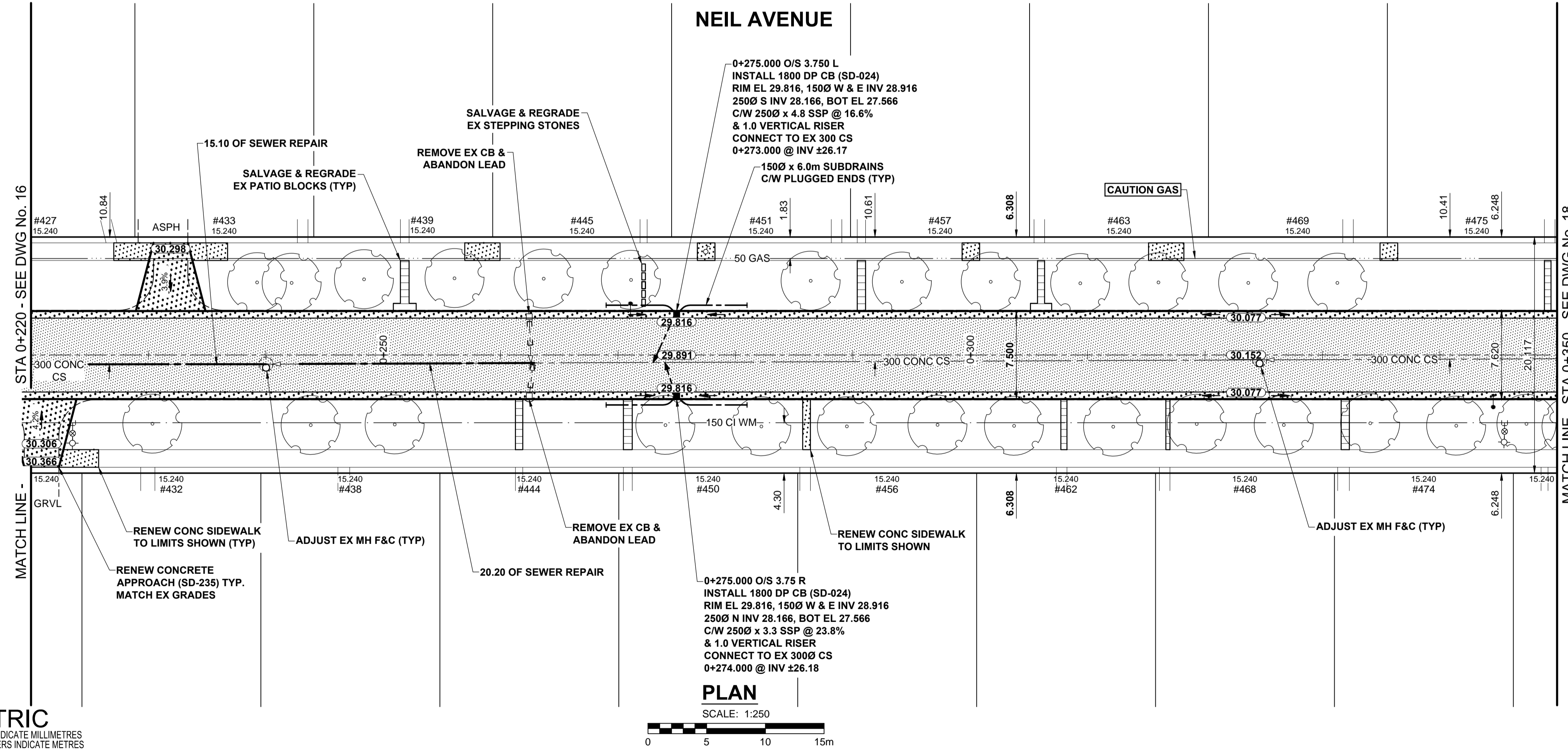


A1 SIZE 594mm x 841mm



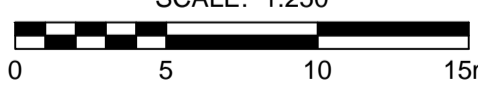
- NOTES**
- ADJUST MH AND CB RIMS TO NEW GRADES.
 - LAMP STANDARDS, HYDRO POLES, AND ANCHORS THAT REQUIRE TEMPORARY SUPPORT, REMOVAL OR REPLACEMENT, TO BE DONE SO AT THE EXPENSE OF THE CONTRACTOR AS NECESSARY.
 - CONTRACTOR TO REGRADE/RENEW EXISTING PRIVATE SIDEWALKS TO LIMITS AS SHOWN. SIDEWALKS TO BE RENEWED WITH CONCRETE UNLESS NOTED OTHERWISE.
 - CONTRACTOR TO TAKE PRECAUTIONARY STEPS TO PROTECT EXISTING TREES WITHIN THE LIMITS OF CONSTRUCTION FROM DAMAGE FROM CONSTRUCTION ACTIVITIES AS OUTLINED IN THE SPECIFICATIONS.
 - CONTRACTOR TO CONFIRM THE LOCATION OF ALL UTILITIES/SERVICES IN THE FIELD PRIOR TO CONSTRUCTION.
 - MODIFIED BARRIER CURB TO BE USED AT ALL INTERSECTION RADII, BACK LANE RADII AND BULLNOSES.
 - CB SD-023 & SD-024 OFFSETS ARE DIMENSIONED TO BOC. CB SD-025 OFFSETS ARE DIMENSIONED O/C.
 - ADD 200.000m TO ABBREVIATED ELEVATIONS TO OBTAIN GEODETIC ELEVATIONS.
 - IN GENERAL, PAVEMENT AND SIDEWALK AREAS TO BE REMOVED. MATCH RECONSTRUCTION LIMITS.
 - REFER TO BID OPPORTUNITY FOR DETAILS REGARDING TRAFFIC MANAGEMENT.

PLOT: 3/31/2015 11:41:57 AM



TYPICAL PAVEMENT SECTION
ASPHALT PAVEMENT STRUCTURE
SCALE: NTS

METRIC
WHOLE NUMBERS INDICATE MILLIMETRES
DECIMALIZED NUMBERS INDICATE METRES



EXISTING	LEGEND - PLAN	NEW	EXISTING	LEGEND - PLAN	NEW	EXISTING	LEGEND - PLAN	NEW
	GAS		MANHOLE		CONCRETE PAVEMENT		LOCATION APPROVED	
	MTS		CATCH BASIN / CATCH PIT		CONC SIDEWALK / MEDIAN		UNDERGROUND STRUCTURES	
	HYDRO		CURB INLET WITH BOX		ASPHALT PAVEMENT		SUPR. U/G STRUCTURES	
	CATV / FIBRE OPTIC		TREE		PAVING STONE		DATE	
	TRAFFIC SIGNALS / PIT		TEST HOLE		GRAVEL		COMMITTEE	
	LAND DRAINAGE SEWER		PROPERTY LINE		RAMP CURB		NOTE:	
	SANITARY/COMBINED SEWER		SURVEY BAR		PLANING / REMOVAL		LOCATION OF UNDERGROUND STRUCTURES	
	SEWER SERV/DRAINAGE CONN		FENCE				EXISTENCE AND EXACT LOCATION OF ALL SERVICES	
	WATERMAIN		BOC / EDGE OF PAVEMENT				CONFIRMATION OF EXISTENCE AND EXACT LOCATION OF ALL SERVICES	
	SUBDRAIN		ELEVATION				MUST BE OBTAINED FROM THE INDIVIDUAL UTILITIES	
	DITCH		TRAFFIC SIGN				PROCEEDING WITH CONSTRUCTION	

GBM 12-062	N.E. Cor. Watt St. & Kimberly Ave., T44, on top of 0.05 m dia. x 2.4		
ELEV 230.128	non pipe, 0.3 m W. of E.L. of Watt St. & on N.L. of Kimberly Ave.		
B	ISSUED FOR TENDER	15/03/16	RPB
A	ISSUED FOR CITY REVIEW	15/03/16	RPB
No.	REVISIONS	YYMMDD	BY

MORRISON HERSHFELD

DESIGNED BY: RPB
CHECKED BY: WRJ
DRAWN BY: DML
APPROVED BY: BWB

HOR. SCALE: 1:250
VERT. SCALE: 1:10
DATE: 15/03/16

PROFESSIONAL'S SEAL
PROVINCE OF MANITOBA
REGISTERED PROFESSIONAL ENGINEER
R.P. BRUCE
CONSULTANT DRAWING No. W150004 Neil-PP-02.dwg

THE CITY OF WINNIPEG
PUBLIC WORKS DEPARTMENT
ENGINEERING DIVISION

2015 LOCAL STREET & ALLEY RENEWAL PROGRAM
NEIL AVENUE
ROCH ST TO WATT ST
ASPHALT RECONSTRUCTION
HORIZONTAL AND VERTICAL ALIGNMENT
STA 0+220 TO STA 0+350

CITY DRAWING NUMBER: N/A
SHEET 17 OF 39
DRAWING No. 17
REV B

BID OPPORTUNITY No. 19-2015