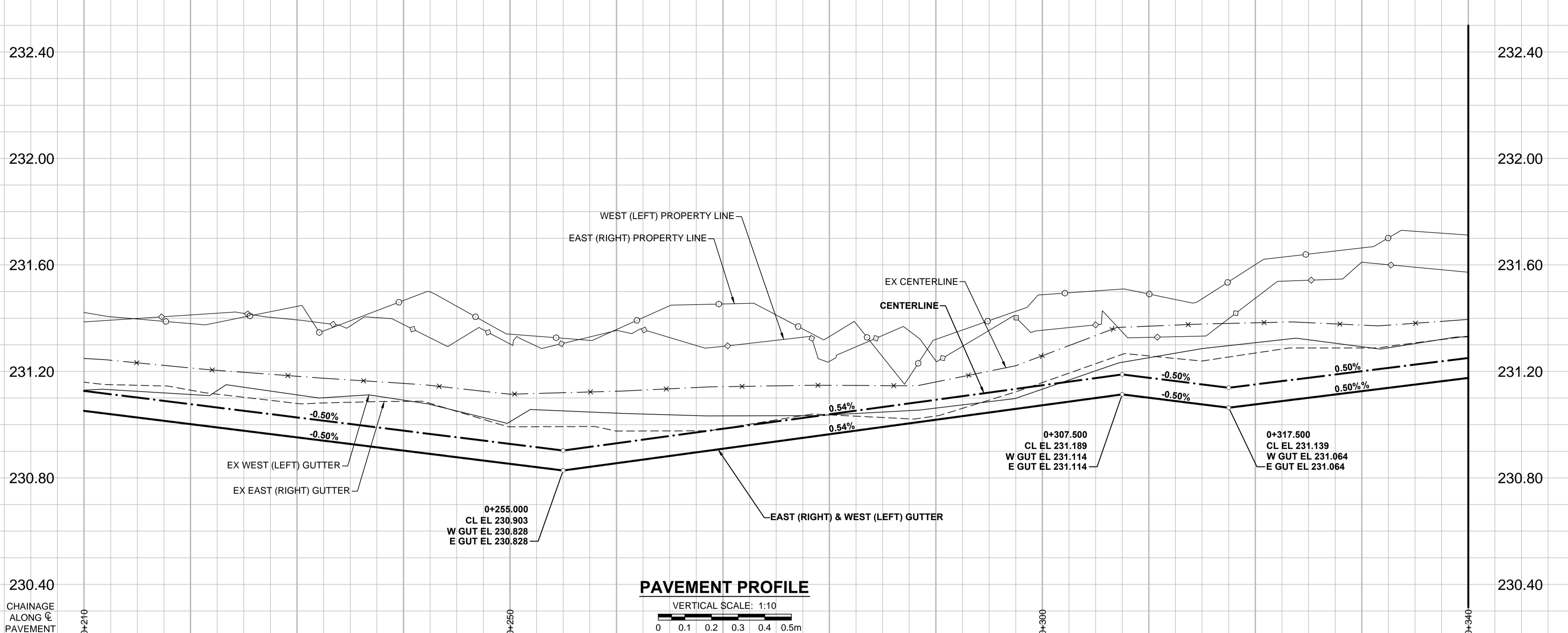


A1 SIZE 594mm x 841mm

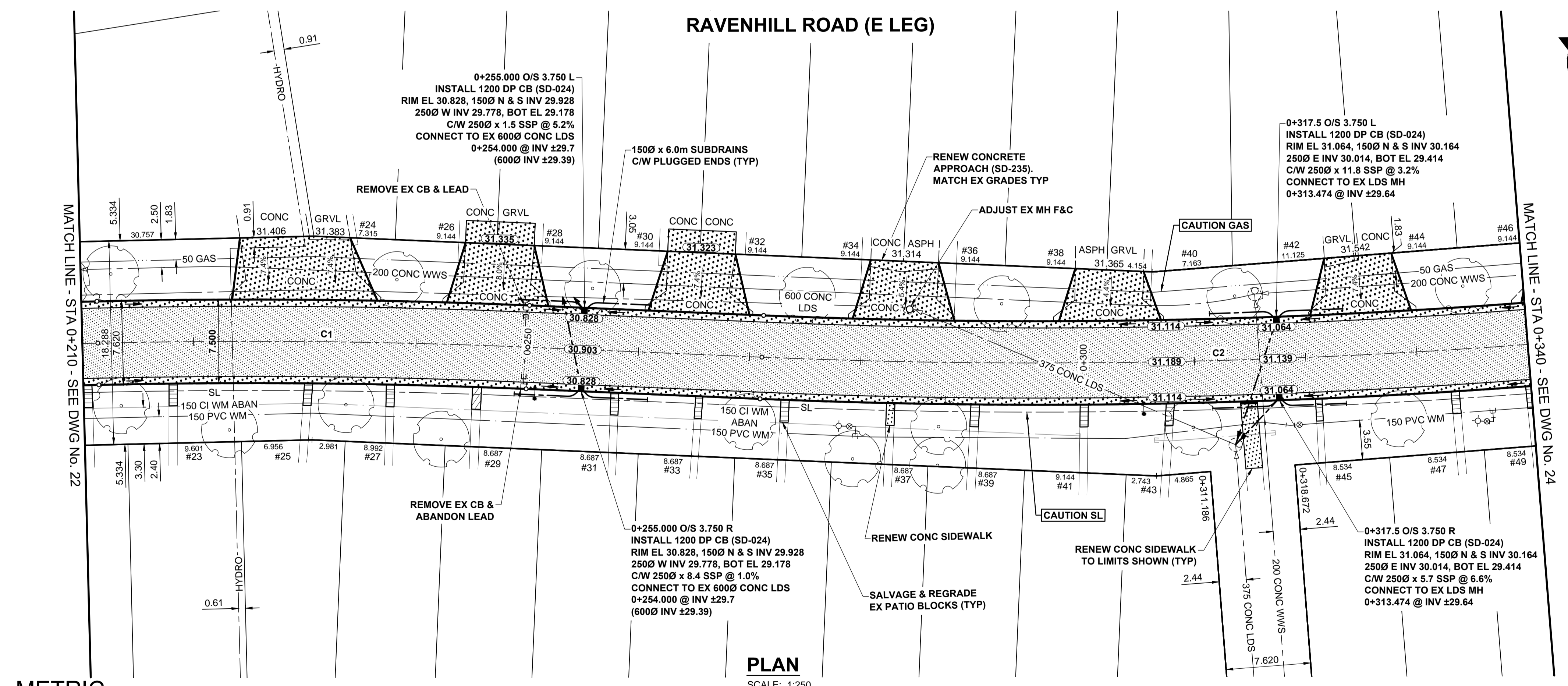
PLOT: 3/31/2015 11:45:04 AM

FILE NAME: W150004-Ravenhill-PP-02.dwg Saved By: dlane

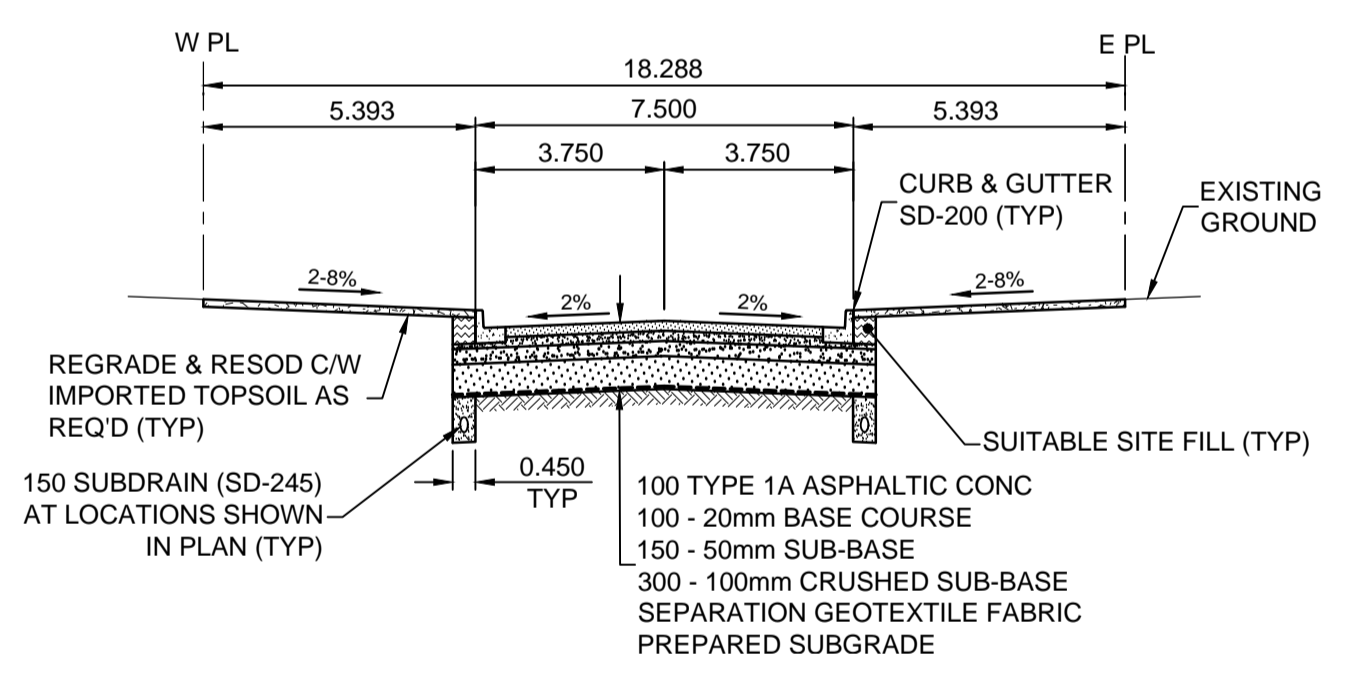
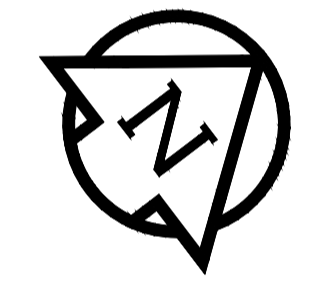


PAVEMENT PROFILE
VERTICAL SCALE: 1:10
0 0.1 0.2 0.3 0.4 0.5m

- NOTES**
- ADJUST MH AND CB RIMS TO NEW GRADES.
 - LAMP STANDARDS, HYDRO POLES, AND ANCHORS THAT REQUIRE TEMPORARY SUPPORT, REMOVAL OR REPLACEMENT, TO BE DONE SO AT THE EXPENSE OF THE CONTRACTOR AS NECESSARY.
 - CONTRACTOR TO REGRADE/RENEW EXISTING PRIVATE SIDEWALKS TO LIMITS AS SHOWN. SIDEWALKS TO BE RENEWED WITH CONCRETE UNLESS NOTED OTHERWISE.
 - CONTRACTOR TO TAKE PRECAUTIONARY STEPS TO PROTECT EXISTING TREES WITHIN THE LIMITS OF CONSTRUCTION FROM DAMAGE FROM CONSTRUCTION ACTIVITIES AS OUTLINED IN THE SPECIFICATIONS.
 - CONTRACTOR TO CONFIRM THE LOCATION OF ALL UTILITIES/SERVICES IN THE FIELD PRIOR TO CONSTRUCTION.
 - MODIFIED BARRIER CURB TO BE USED AT ALL INTERSECTION RADII, BACK LANE RADII AND BULLNOSES.
 - CB SD-023 & SD-024 OFFSETS ARE DIMENSIONED TO BOC. CB SD-025 OFFSETS ARE DIMENSIONED O/C.
 - ADD 200.000m TO ABBREVIATED ELEVATIONS TO OBTAIN GEODETIC ELEVATIONS.
 - IN GENERAL, PAVEMENT AND SIDEWALK AREAS TO BE REMOVED. MATCH RECONSTRUCTION LIMITS.
 - REFER TO BID OPPORTUNITY FOR DETAILS REGARDING TRAFFIC MANAGEMENT.



PLAN
SCALE: 1:250
0 5 10 15m



TYPICAL PAVEMENT SECTION
ASPHALT PAVEMENT STRUCTURE
SCALE: NTS

CONTROL LINE - COORDINATES		
NAME	NORTHING	EASTING
PI 0+100.000	9534.254	10041.191
PC 0+211.404	9627.196	10102.614
PT 0+250.061	9658.714	10124.982
PC 0+271.113	9675.469	10137.729
PT 0+341.710	9734.104	10176.968

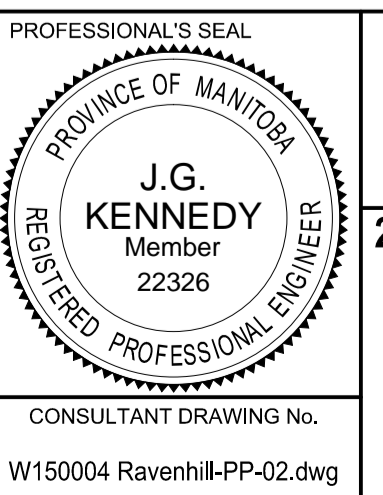
CONTROL LINE - CURVES				
CURVE	RADIUS	LENGTH	DELTA	TANGENT
C1	582.000	38.656	3°48'20"	19.335
C2	582.000	70.597	6°57'00"	35.342

METRIC
WHOLE NUMBERS INDICATE MILLIMETRES
DECIMALIZED NUMBERS INDICATE METRES

EXISTING		NEW		EXISTING		NEW		EXISTING		NEW	
	GAS		MANHOLE		CONCRETE PAVEMENT		LOCATION APPROVED		CONC SIDEWALK / MEDIAN		UNDERGROUND STRUCTURES
	MTS		CATCH BASIN / CATCH PIT		CONC SIDEWALK / MEDIAN		SUPR. U/G STRUCTURES		ASPHALT PAVEMENT		DATE
	HYDRO		CURB INLET WITH BOX		PAVING STONE		COMMITTEE		GRAVEL		NOTE:
	CATV / FIBRE OPTIC		TREE		RAMP CURB		LOCATION APPROVED		PLANING / REMOVAL		NOTE:
	TRAFFIC SIGNALS / PIT		TEST HOLE		GRAVEL		LOCATION APPROVED		PLANING / REMOVAL		NOTE:
	LAND DRAINAGE SEWER		PROPERTY LINE		RAMP CURB		LOCATION APPROVED		PLANING / REMOVAL		NOTE:
	SANITARY/COMBINED SEWER		SURVEY BAR		RAMP CURB		LOCATION APPROVED		PLANING / REMOVAL		NOTE:
	SEWER SERV/DRAINAGE CONN		FENCE		RAMP CURB		LOCATION APPROVED		PLANING / REMOVAL		NOTE:
	WATERMAIN		BOC / EDGE OF PAVEMENT		RAMP CURB		LOCATION APPROVED		PLANING / REMOVAL		NOTE:
	SUBDRAIN		ELEVATION		RAMP CURB		LOCATION APPROVED		PLANING / REMOVAL		NOTE:
	DITCH		TRAFFIC SIGN		RAMP CURB		LOCATION APPROVED		PLANING / REMOVAL		NOTE:

GMB 11-030		N.E. Cor. Louella St. & Tu-Pelo Ave., Tsk. on top of 0.05 m dia. x 2.4 m iron pipe, 2.8 m S. of N.L. of Tu-Pelo Ave. & on E.L. of Louella St.	
ELEV 231.350			
B	ISSUED FOR TENDER	15/03/16	JGK
A	ISSUED FOR CITY REVIEW	15/03/16	JGK
No.	REVISIONS	YYMMDD	BY

MORRISON HERSHFELD			
DESIGNED BY	JGK	CHECKED BY	RPB
DRAWN BY	DML	APPROVED BY	BWB
HOR. SCALE	1:250	RELEASED FOR CONSTRUCTION	
VERT. SCALE	1:10		
DATE	15/03/16	DATE	



THE CITY OF WINNIPEG
PUBLIC WORKS DEPARTMENT
ENGINEERING DIVISION

2015 LOCAL STREET & ALLEY RENEWAL PROGRAM
RAVENHILL ROAD
ANTRIM RD TO TU-PELO AV
ASPHALT RECONSTRUCTION
HORIZONTAL AND VERTICAL ALIGNMENT
STA 0+210 TO STA 0+340

CITY DRAWING NUMBER: N/A
SHEET 23 OF 39
DRAWING No. 23
REV B

CONSULTANT DRAWING No. W150004-Ravenhill-PP-02.dwg

BID OPPORTUNITY No. 19-2015