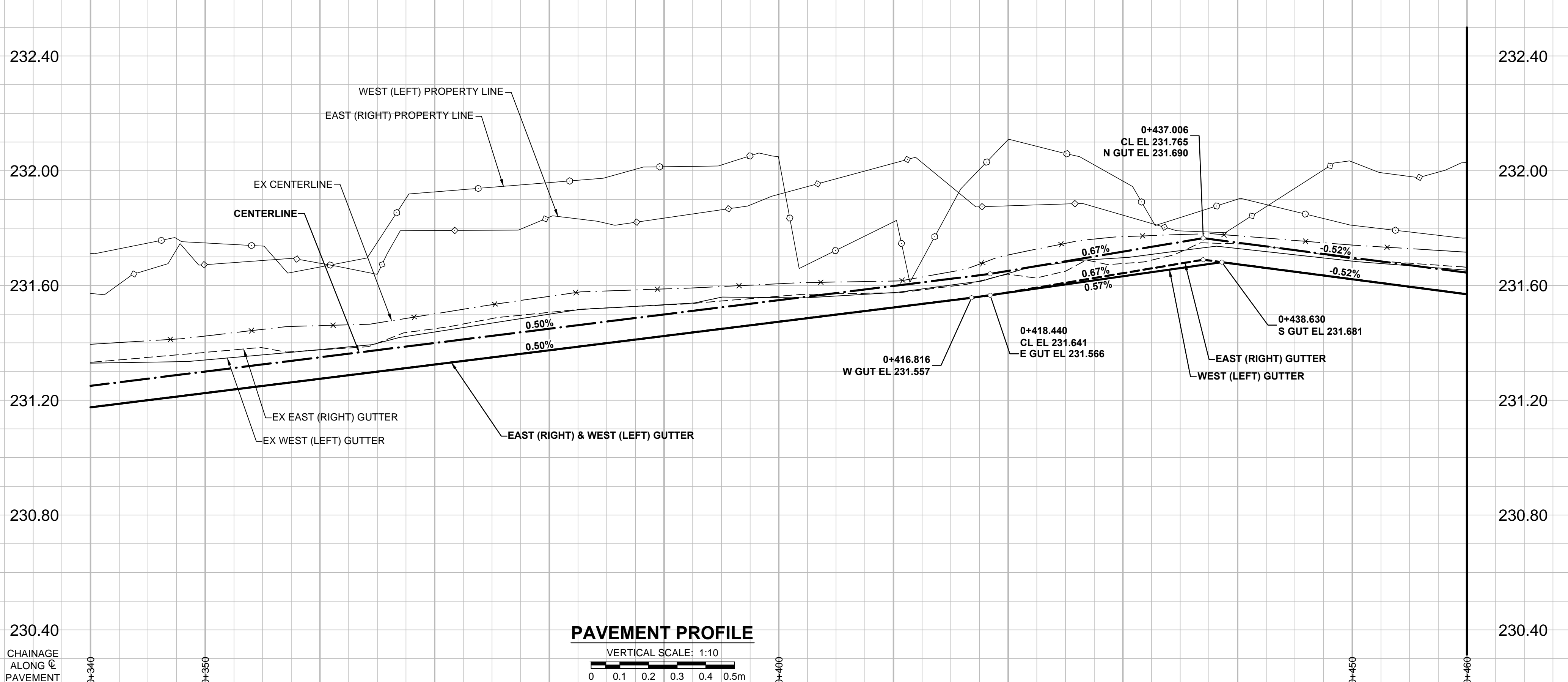


A1 SIZE 594mm x 841mm

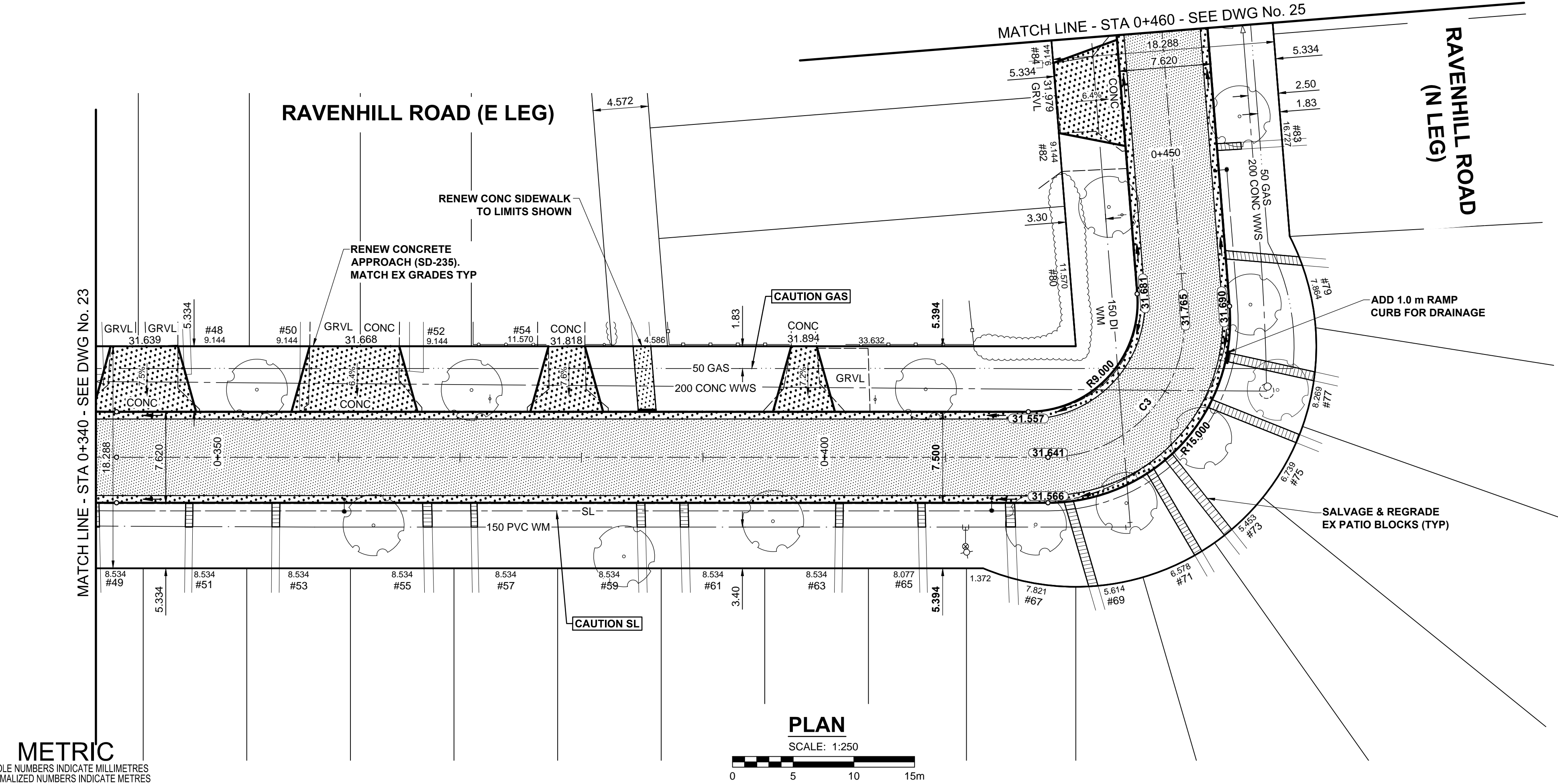
PLOT: 3/31/2015 11:45:51 AM

FILE NAME: W150004 Ravenhill-PP-03.dwg Saved By: dlane

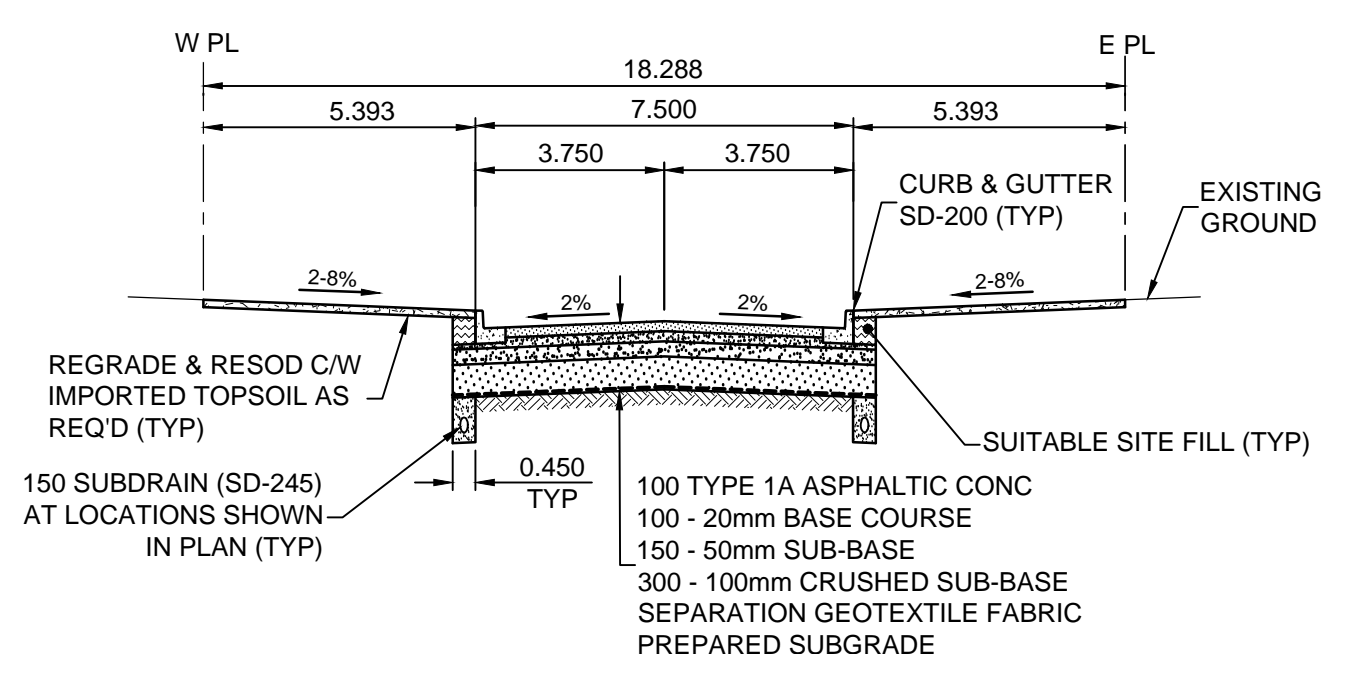


PAVEMENT PROFILE
VERTICAL SCALE: 1:10

- NOTES**
- ADJUST MH AND CB RIMS TO NEW GRADES.
 - LAMP STANDARDS, HYDRO POLES, AND ANCHORS THAT REQUIRE TEMPORARY SUPPORT, REMOVAL OR REPLACEMENT, TO BE DONE SO AT THE EXPENSE OF THE CONTRACTOR AS NECESSARY.
 - CONTRACTOR TO REGRADE/RENEW EXISTING PRIVATE SIDEWALKS TO LIMITS AS SHOWN. SIDEWALKS TO BE RENEWED WITH CONCRETE UNLESS NOTED OTHERWISE.
 - CONTRACTOR TO TAKE PRECAUTIONARY STEPS TO PROTECT EXISTING TREES WITHIN THE LIMITS OF CONSTRUCTION FROM DAMAGE FROM CONSTRUCTION ACTIVITIES AS OUTLINED IN THE SPECIFICATIONS.
 - CONTRACTOR TO CONFIRM THE LOCATION OF ALL UTILITIES/SERVICES IN THE FIELD PRIOR TO CONSTRUCTION.
 - MODIFIED BARRIER CURB TO BE USED AT ALL INTERSECTION RADII, BACK LANE RADII AND BULLNOSES.
 - CB SD-023 & SD-024 OFFSETS ARE DIMENSIONED TO BOC. CB SD-025 OFFSETS ARE DIMENSIONED O/C.
 - ADD 200.00m TO ABBREVIATED ELEVATIONS TO OBTAIN GEODETIC ELEVATIONS.
 - IN GENERAL, PAVEMENT AND SIDEWALK AREAS TO BE REMOVED. MATCH RECONSTRUCTION LIMITS.
 - REFER TO BID OPPORTUNITY FOR DETAILS REGARDING TRAFFIC MANAGEMENT.



PLAN
SCALE: 1:250



TYPICAL PAVEMENT SECTION
ASPHALT PAVEMENT STRUCTURE
SCALE: NTS

CONTROL LINE - COORDINATES		
NAME	NORTHING	EASTING
PC 0+271.113	9675.469	10137.729
PT 0+341.710	9734.104	10176.968
PC 0+418.440	9800.343	10215.698
PT 0+437.006	9816.153	10210.876
PC 0+481.360	9835.430	10170.930

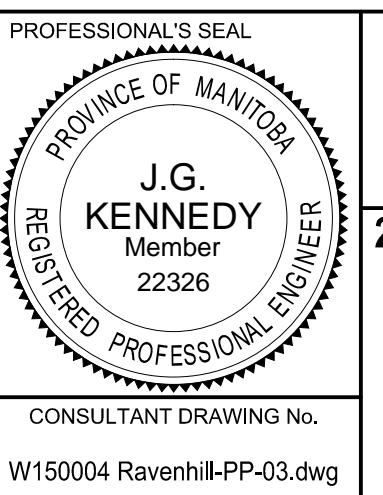
CONTROL LINE - CURVES				
CURVE	RADIUS	LENGTH	DELTA	TANGENT
C3	11.250	18.566	94°33'15"	12.182

METRIC
WHOLE NUMBERS INDICATE MILLIMETRES
DECIMALIZED NUMBERS INDICATE METRES

LEGEND - PLAN		LEGEND - PLAN		LEGEND - PLAN		LEGEND - PLAN		LEGEND - PLAN	
EXISTING	NEW	EXISTING	NEW	EXISTING	NEW	EXISTING	NEW	EXISTING	NEW
	GAS		MANHOLE		CONCRETE PAVEMENT		LOCATION APPROVED		GAS
	MTS		CATCH BASIN / CATCH PIT		CONC SIDEWALK / MEDIAN		UNDERGROUND STRUCTURES		HYDRO
	CATV / FIBRE OPTIC		CURB INLET WITH BOX		ASPHALT PAVEMENT		DATE		TRAFFIC SIGNALS / PIT
	LAND DRAINAGE SEWER		TREE		PAVING STONE		NOTE:		SEWER SERV/DRAINAGE CONN
	SANITARY/COMBINED SEWER		TEST HOLE		GRAVEL		PROPERTY LINE		WATERMAIN
	SEWER SERV/DRAINAGE CONN		PROPERTY LINE		RAMP CURB		SURVEY BAR		SUBDRAIN
	FENCE		BOC / EDGE OF PAVEMENT		PLANING / REMOVAL		ELEVATION		DITCH
	FENCE		TRAFFIC SIGN				ELEVATION		

GBM 11-030	N.E. Cor. Louella St. & Tu-Pelo Ave. Tsk. on top of 0.05 m dia. x 2.4 m iron pipe, 2.8 m S. of N.L. of Tu-Pelo Ave. & on E.L. of Louella St.
ELEV 231.350	
B	ISSUED FOR TENDER 15/03/16 JGK
A	ISSUED FOR CITY REVIEW 15/03/16 JGK
No.	REVISIONS YYMMDDI BY

MORRISON HERSHFELD	
DESIGNED BY JGK	CHECKED BY RPB
DRAWN BY DML	APPROVED BY BWB
HOR. SCALE 1:250	RELEASED FOR CONSTRUCTION
VERT. SCALE 1:10	
DATE 15/03/16	DATE



THE CITY OF WINNIPEG
PUBLIC WORKS DEPARTMENT
ENGINEERING DIVISION

2015 LOCAL STREET & ALLEY RENEWAL PROGRAM
RAVENHILL ROAD
ANTRIM RD TO TU-PELO AV
ASPHALT RECONSTRUCTION
HORIZONTAL AND VERTICAL ALIGNMENT
STA 0+340 TO STA 0+460

CITY DRAWING NUMBER N/A
SHEET 24 OF 39
DRAWING No. 24
REV B

CONSULTANT DRAWING No. W150004 Ravenhill-PP-03.dwg

BID OPPORTUNITY No. 19-2015