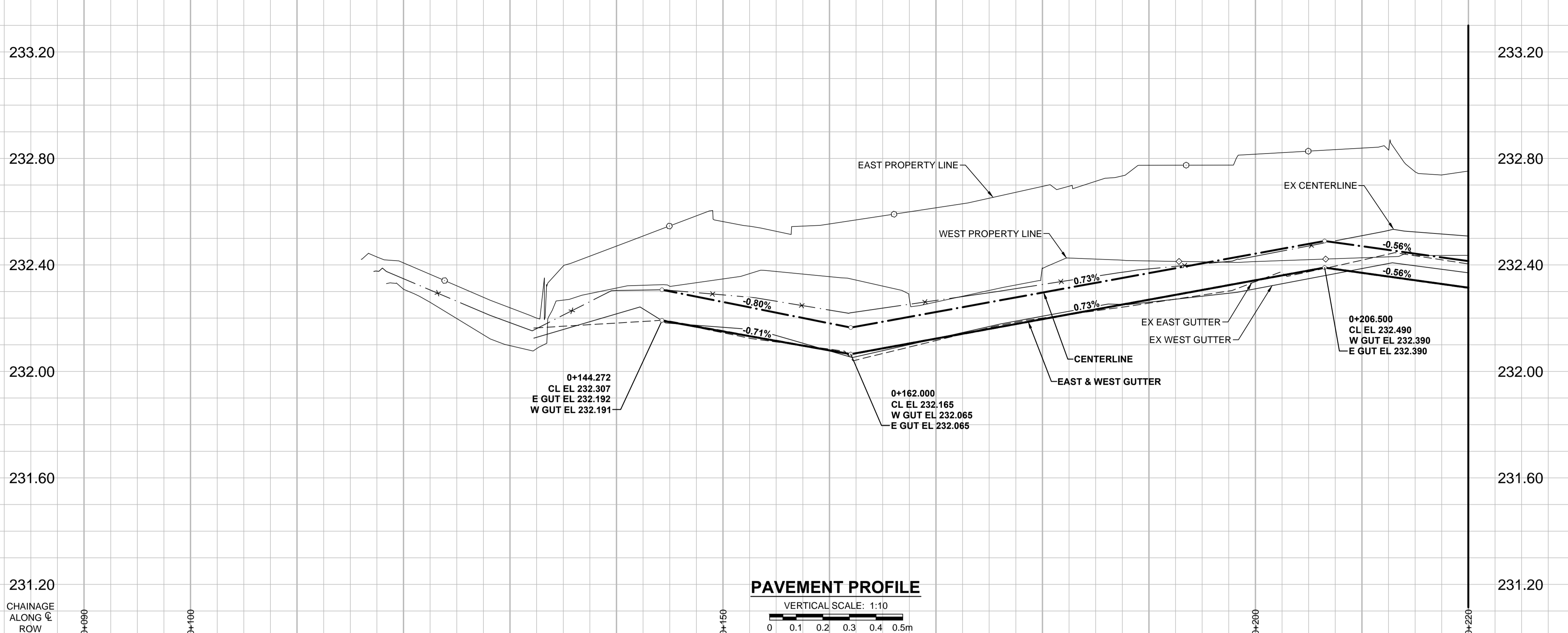
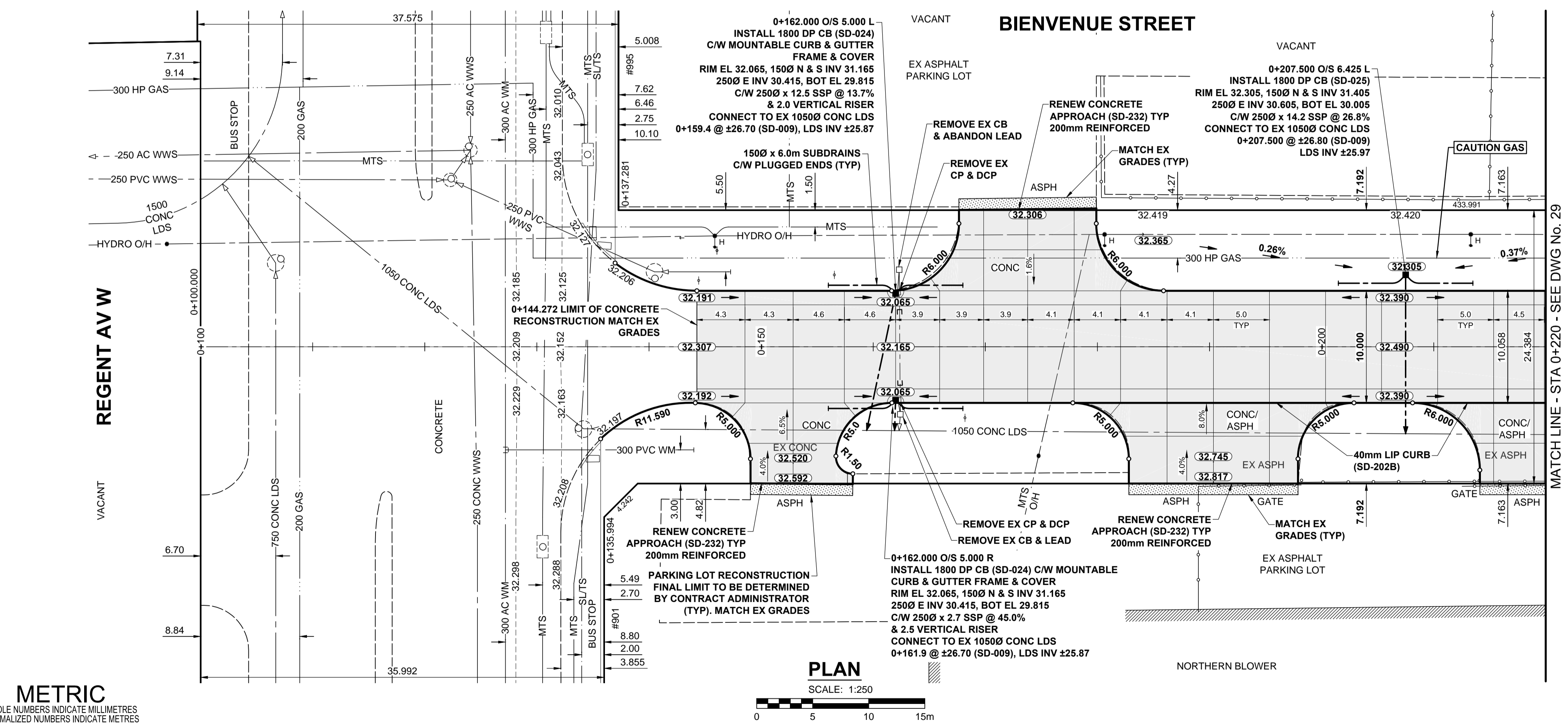


A1 SIZE 594mm x 841mm
PLOT: 3/31/2015 11:49:43 AM
FILE NAME: W150004-Bienvenue-PP-01.dwg Saved By: Diane

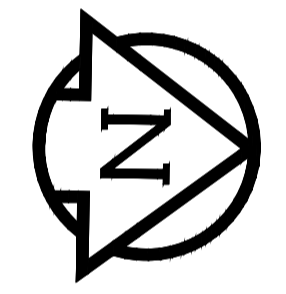


- NOTES**
- ADJUST MH AND CB RIMS TO NEW GRADES.
 - LAMP STANDARDS, HYDRO POLES, AND ANCHORS THAT REQUIRE TEMPORARY SUPPORT, REMOVAL OR REPLACEMENT, TO BE DONE SO AT THE EXPENSE OF THE CONTRACTOR AS NECESSARY.
 - CONTRACTOR TO REGRADE/RENEW EXISTING PRIVATE SIDEWALKS TO LIMITS AS SHOWN. SIDEWALKS TO BE RENEWED WITH CONCRETE UNLESS NOTED OTHERWISE.
 - CONTRACTOR TO TAKE PRECAUTIONARY STEPS TO PROTECT EXISTING TREES WITHIN THE LIMITS OF CONSTRUCTION FROM DAMAGE FROM CONSTRUCTION ACTIVITIES AS OUTLINED IN THE SPECIFICATIONS.
 - CONTRACTOR TO CONFIRM THE LOCATION OF ALL UTILITIES/SERVICES IN THE FIELD PRIOR TO CONSTRUCTION.
 - CB SD-023 & SD-024 OFFSETS ARE DIMENSIONED TO BOC. CB SD-025 OFFSETS ARE DIMENSIONED O.C.
 - ADD 200.000m TO ABBREVIATED ELEVATIONS TO OBTAIN GEODETIC ELEVATIONS.
 - IN GENERAL, PAVEMENT AND SIDEWALK AREAS TO BE REMOVED. MATCH RECONSTRUCTION LIMITS.
 - REFER TO BID OPPORTUNITY FOR DETAILS REGARDING TRAFFIC MANAGEMENT.

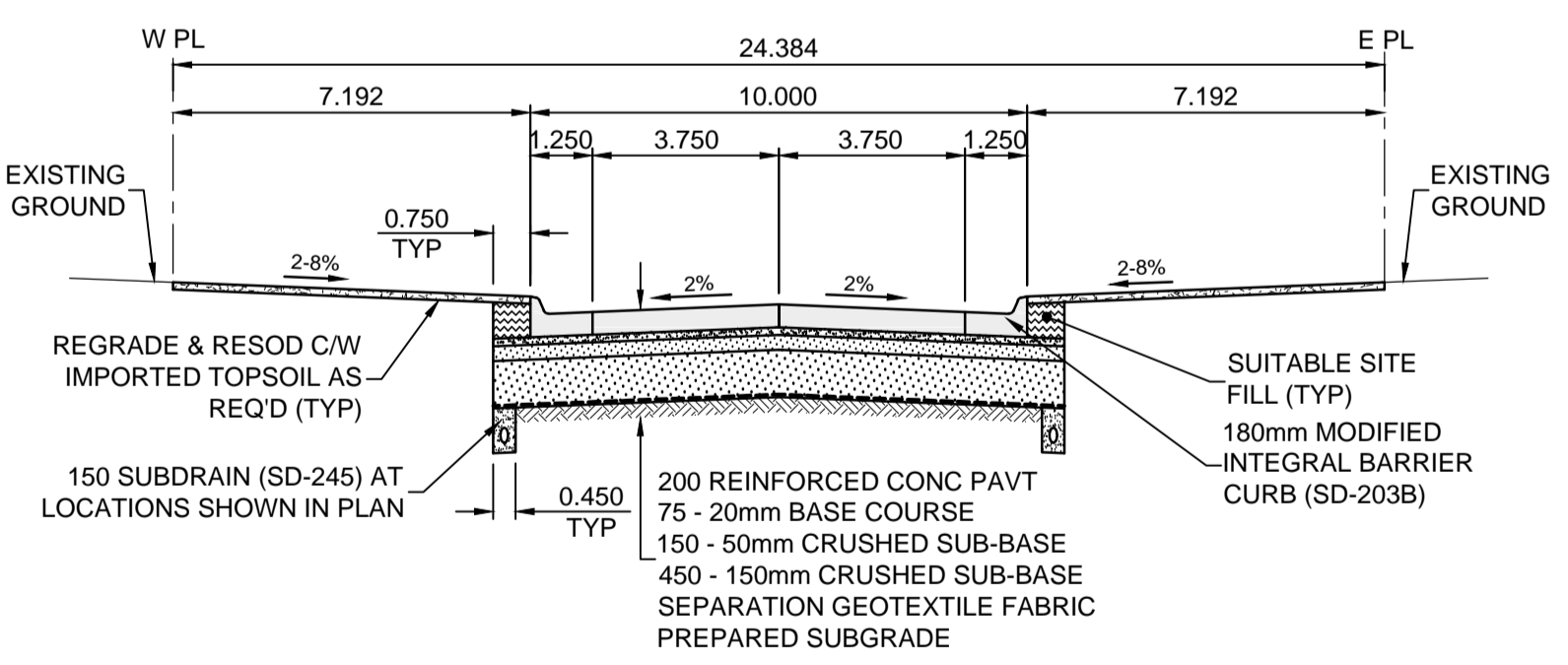
PAVEMENT PROFILE
VERTICAL SCALE: 1:10
0 0.1 0.2 0.3 0.4 0.5m



PLAN
SCALE: 1:250
0 5 10 15m



CONTROL LINE - COORDINATES		
NAME	NORTHING	EASTING
POT 0+110.000	9539.016	10019.959
POT 0+580.000	10008.949	10012.035



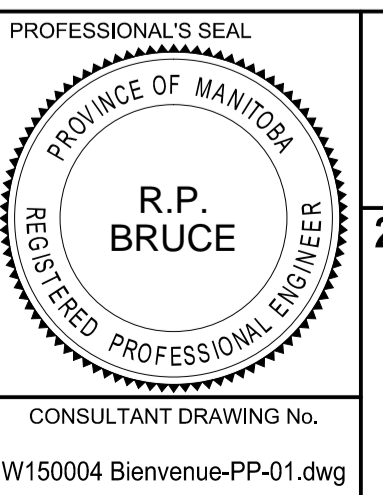
TYPICAL PAVEMENT SECTION
CONCRETE PAVEMENT STRUCTURE
SCALE: NTS

METRIC
WHOLE NUMBERS INDICATE MILLIMETRES
DECIMALIZED NUMBERS INDICATE METRES

EXISTING	LEGEND - PLAN	NEW	EXISTING	LEGEND - PLAN	NEW	EXISTING	LEGEND - PLAN	NEW	
	GAS		MANHOLE		CONCRETE PAVEMENT		LOCATION APPROVED		GAS
	MTS		CATCH BASIN / CATCH PIT		CONC SIDEWALK / MEDIAN		UNDERGROUND STRUCTURES		HYDRO
	CATV / FIBRE OPTIC		CURB INLET WITH BOX		ASPHALT PAVEMENT		SUPR. UG STRUCTURES		TRAFFIC SIGNALS / PIT
	TREE		TEST HOLE		PAVING STONE		DATE		LAND DRAINAGE SEWER
	PROPERTY LINE		SURVEY BAR		GRAVEL		NOTE:		SANITARY/COMBINED SEWER
	FENCE		BOC / EDGE OF PAVEMENT		RAMP CURB		LOCATION OF UNDERGROUND STRUCTURES AS SHOWN ARE BASED ON THE BEST INFORMATION AVAILABLE. BUT NO GUARANTEE IS GIVEN THAT ALL EXISTING UTILITIES ARE SHOWN OR THAT THE GIVEN LOCATIONS ARE EXACT. CONFIRMATION OF EXISTENCE AND EXACT LOCATION OF ALL SERVICES MUST BE OBTAINED FROM THE INDIVIDUAL UTILITIES BEFORE PROCEEDING WITH CONSTRUCTION.		SEWER SERV/DRAINAGE CONN
	WATERMAIN		ELEVATION		PLANING / REMOVAL		REVISIONS		SUBDRAIN
	DITCH		TRAFFIC SIGN				No.		DITCH

GBM 29-005	N.E. Cor. Ravelston Ave. W. & C.N.R. Victoria Branch Line, 19 mm x 4.6 m I.B. in Valve Box in center of Hydro Tower No. 17 on N. side of Ravelston Ave. W. & E. side of railway tracks in C.N.R. R.O.W.		
A	ISSUED FOR CITY REVIEW	15/03/16	RPB
B	ISSUED FOR TENDER	15/03/16	RPB
No.	REVISIONS	YYMMDD	BY

MORRISON HERSHFELD	
DESIGNED BY	RPB
CHECKED BY	WRJ
DRAWN BY	DML
APPROVED BY	BWB
HOR. SCALE	1:250
VERT. SCALE	1:10
DATE	15/03/16



THE CITY OF WINNIPEG
PUBLIC WORKS DEPARTMENT
ENGINEERING DIVISION

2015 LOCAL STREET & ALLEY RENEWAL PROGRAM
BIENVENUE STREET
REGENT AV W TO RAVELSTON AV W
CONCRETE RECONSTRUCTION
HORIZONTAL AND VERTICAL ALIGNMENT
STA 0+090 TO STA 0+220

CITY DRAWING NUMBER: N/A
SHEET 28 OF 39
DRAWING No. 28
REV B

CONSULTANT DRAWING No. W150004 Bienvenue-PP-01.dwg

BID OPPORTUNITY No. 19-2015