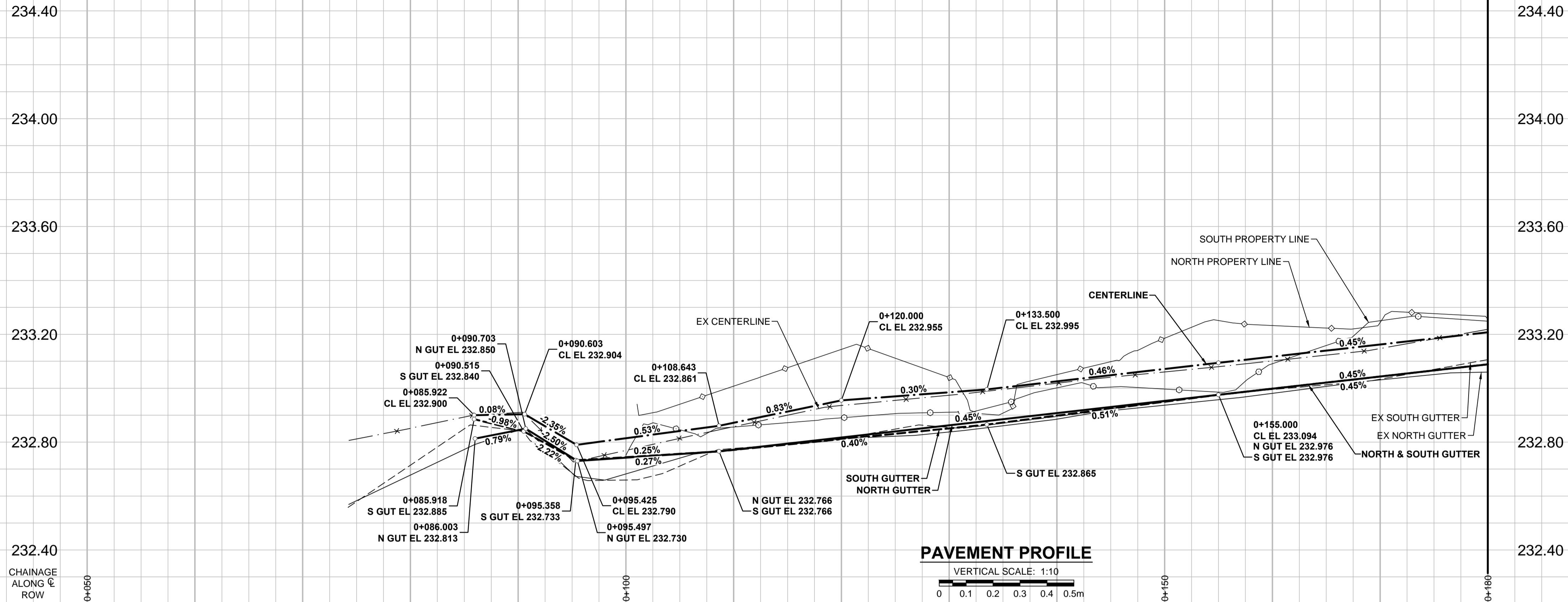
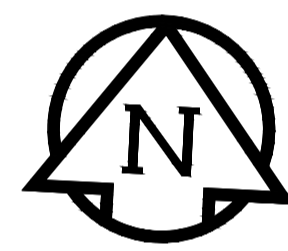
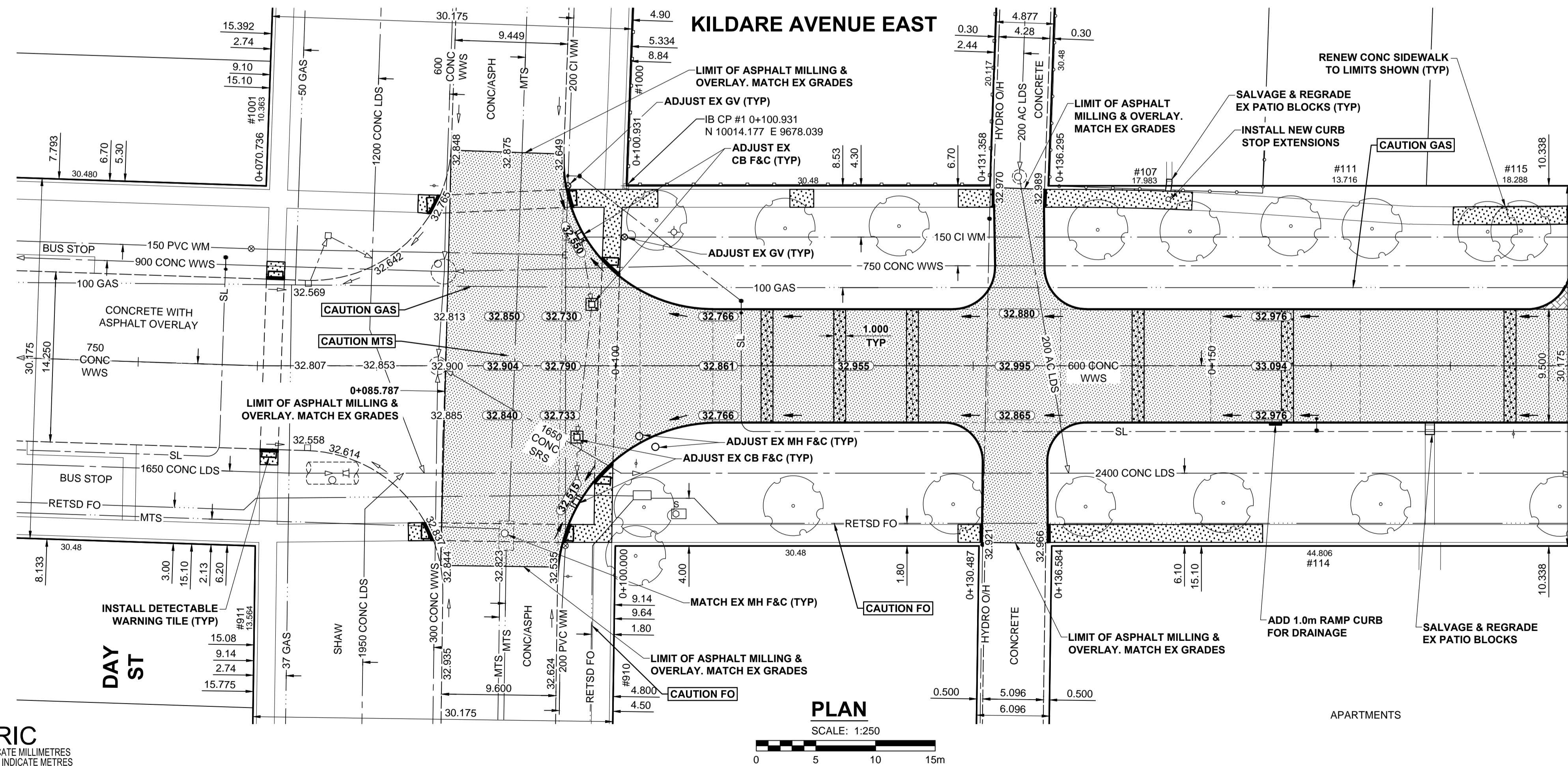


A1 SIZE 594mm x 841mm



PLOT: 3/31/2015 11:51:55 AM



- NOTES**
1. ADJUST MH AND CB RIMS TO NEW GRADES.
 2. LAMP STANDARDS, HYDRO POLES, AND ANCHORS THAT REQUIRE TEMPORARY SUPPORT, REMOVAL OR REPLACEMENT, TO BE DONE SO AT THE EXPENSE OF THE CONTRACTOR AS NECESSARY.
 3. CONTRACTOR TO REGRADE/RENEW EXISTING PRIVATE SIDEWALKS TO LIMITS AS SHOWN. SIDEWALKS TO BE RENEWED WITH CONCRETE UNLESS NOTED OTHERWISE.
 4. CONTRACTOR TO TAKE PRECAUTIONARY STEPS TO PROTECT EXISTING TREES WITHIN THE LIMITS OF CONSTRUCTION FROM DAMAGE FROM CONSTRUCTION ACTIVITIES AS OUTLINED IN THE SPECIFICATIONS.
 5. CONTRACTOR TO CONFIRM THE LOCATION OF ALL UTILITIES/SERVICES IN THE FIELD PRIOR TO CONSTRUCTION.
 6. MODIFIED BARRIER CURB TO BE USED AT ALL INTERSECTION RADII, BACK LANE RADII AND BULLNOSES.
 7. CONTRACTOR TO OVERLAY DRIVEWAYS TO ENSURE POSITIVE DRAINAGE TO NEW STREET GRADES. FINAL LIMITS TO BE DETERMINED IN THE FIELD BY CONTRACT ADMINISTRATOR.
 8. CB SD-023 & SD-024 OFFSETS ARE DIMENSIONED TO BOC. CB SD-025 OFFSETS ARE DIMENSIONED O/C.
 9. ADD 200.000m TO ABBREVIATED ELEVATIONS TO OBTAIN GEODETIC ELEVATIONS.
 10. REFER TO BID OPPORTUNITY FOR DETAILS REGARDING TRAFFIC MANAGEMENT.

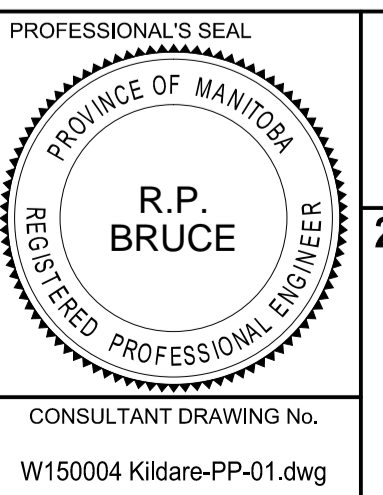
| CONTROL LINE - COORDINATES | | |
|----------------------------|-----------|-----------|
| NAME | NORTHING | EASTING |
| POT 0+060.000 | 9997.393 | 9637.900 |
| PI 0+070.075 | 9997.570 | 9647.974 |
| PC 0+892.588 | 10038.577 | 10469.463 |
| PT 0+928.623 | 10039.725 | 10505.478 |
| POT 1+070.000 | 10041.682 | 10646.843 |

METRIC
WHOLE NUMBERS INDICATE MILLIMETRES
DECIMALIZED NUMBERS INDICATE METRES

| EXISTING | LEGEND - PLAN | NEW | EXISTING | LEGEND - PLAN | NEW | EXISTING | LEGEND - PLAN | NEW |
|----------|--------------------------|-----|-------------------------|---------------|------------------------|----------|--------------------------------------------------------------------------------------------------------------------------------------------------|-----|
| | GAS | | MANHOLE | | CONCRETE PAVEMENT | | LOCATION APPROVED | |
| | MTS | | CATCH BASIN / CATCH PIT | | CONC SIDEWALK / MEDIAN | | SUPR. U/G STRUCTURES | |
| | HYDRO | | CURB INLET WITH BOX | | ASPHALT PAVEMENT | | DATE COMMITTEE | |
| | CATV / FIBRE OPTIC | | TREE | | PAVING STONE | | NOTE: | |
| | TRAFFIC SIGNALS / PIT | | TEST HOLE | | GRAVEL | | LOCATION OF UNDERGROUND STRUCTURES | |
| | LAND DRAINAGE SEWER | | PROPERTY LINE | | RAMP CURB | | EXISTENCE AND EXACT LOCATION OF ALL SERVICES | |
| | SANITARY/COMBINED SEWER | | SURVEY BAR | | PLANING / REMOVAL | | UTILITIES ARE SHOWN OR THAT THE GIVEN LOCATIONS ARE EXACT. | |
| | SEWER SERV/DRAINAGE CONN | | FENCE | | | | CONFIRMATION OF EXISTENCE AND EXACT LOCATION OF ALL SERVICES MUST BE OBTAINED FROM THE INDIVIDUAL UTILITIES BEFORE PROCEEDING WITH CONSTRUCTION. | |
| | WATERMAIN | | BOC / EDGE OF PAVEMENT | | | | REVISIONS | |
| | SUBDRAIN | | ELEVATION | | | | DATE | |
| | DITCH | | TRAFFIC SIGN | | | | BY | |

| | | | |
|------------|---------------------------------------------------------------------------------------------------------------------------------------------------------|----------|-----|
| GBM 10-039 | N.E. Cor. Kildare Ave. E. & Leola St. 7ft on top of 0.05 m dia. x 2.4 m iron pipe, 6.4 m S. of N.L. of Kildare Ave. E. & 4.57 m W. of E.L. of Leola St. | 15/03/16 | RPB |
| A | ISSUED FOR CITY REVIEW | 15/03/16 | RPB |
| No. | REVISIONS | YYMMDD | BY |

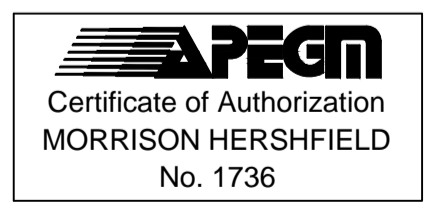
| | | | | | |
|---------------------------|--|------------------|--|---------------------------|--|
| MORRISON HERSHFELD | | DESIGNED BY RPB | | CHECKED BY WRJ | |
| DRAWN BY DML | | APPROVED BY BWB | | RELEASED FOR CONSTRUCTION | |
| HOR. SCALE 1:250 | | VERT. SCALE 1:10 | | DATE 15/03/16 | |



THE CITY OF WINNIPEG
PUBLIC WORKS DEPARTMENT
ENGINEERING DIVISION

2015 LOCAL STREET & ALLEY RENEWAL PROGRAM
KILDARE AVENUE EAST
DAY ST TO WAYOATA ST
REHABILITATION
HORIZONTAL AND VERTICAL ALIGNMENT
STA 0+050 TO STA 0+180

CITY DRAWING NUMBER N/A
SHEET 32 OF 39
DRAWING No. 32 REV B



BID OPPORTUNITY No. 19-2015