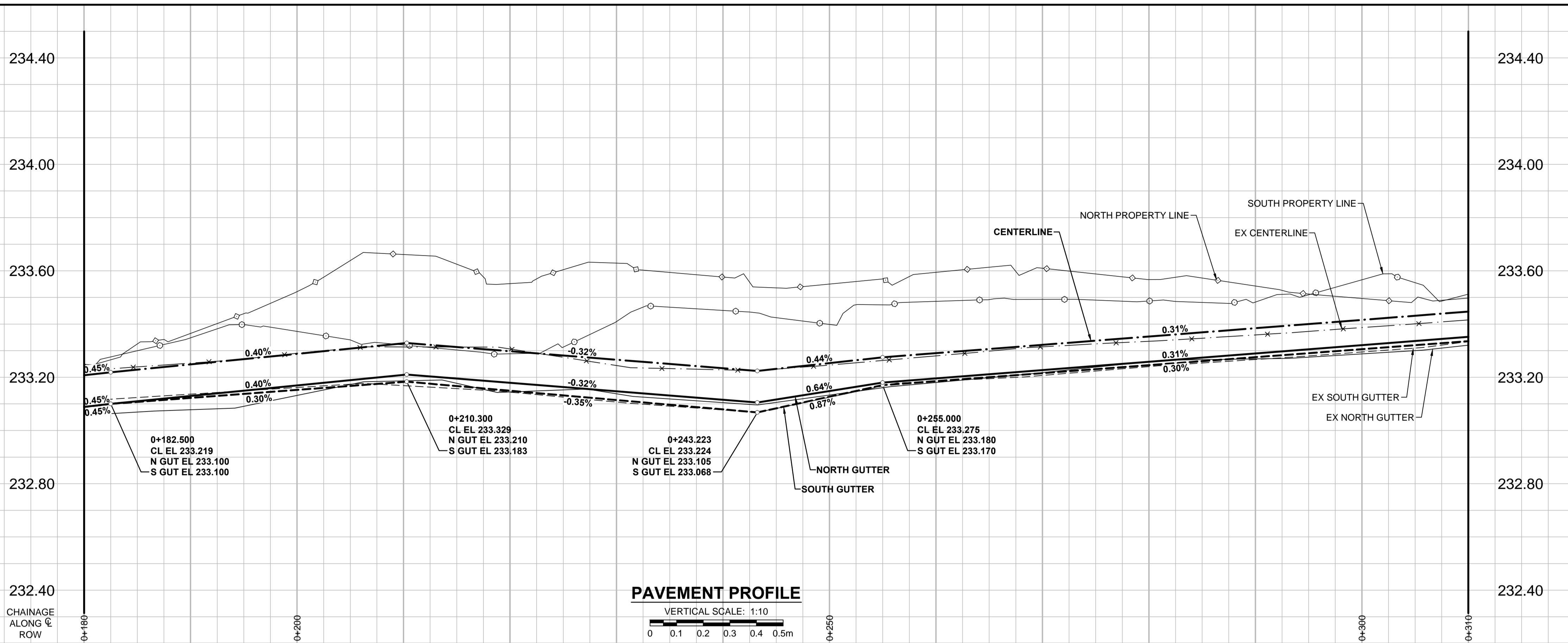
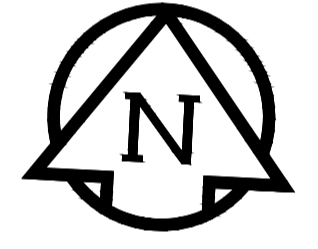
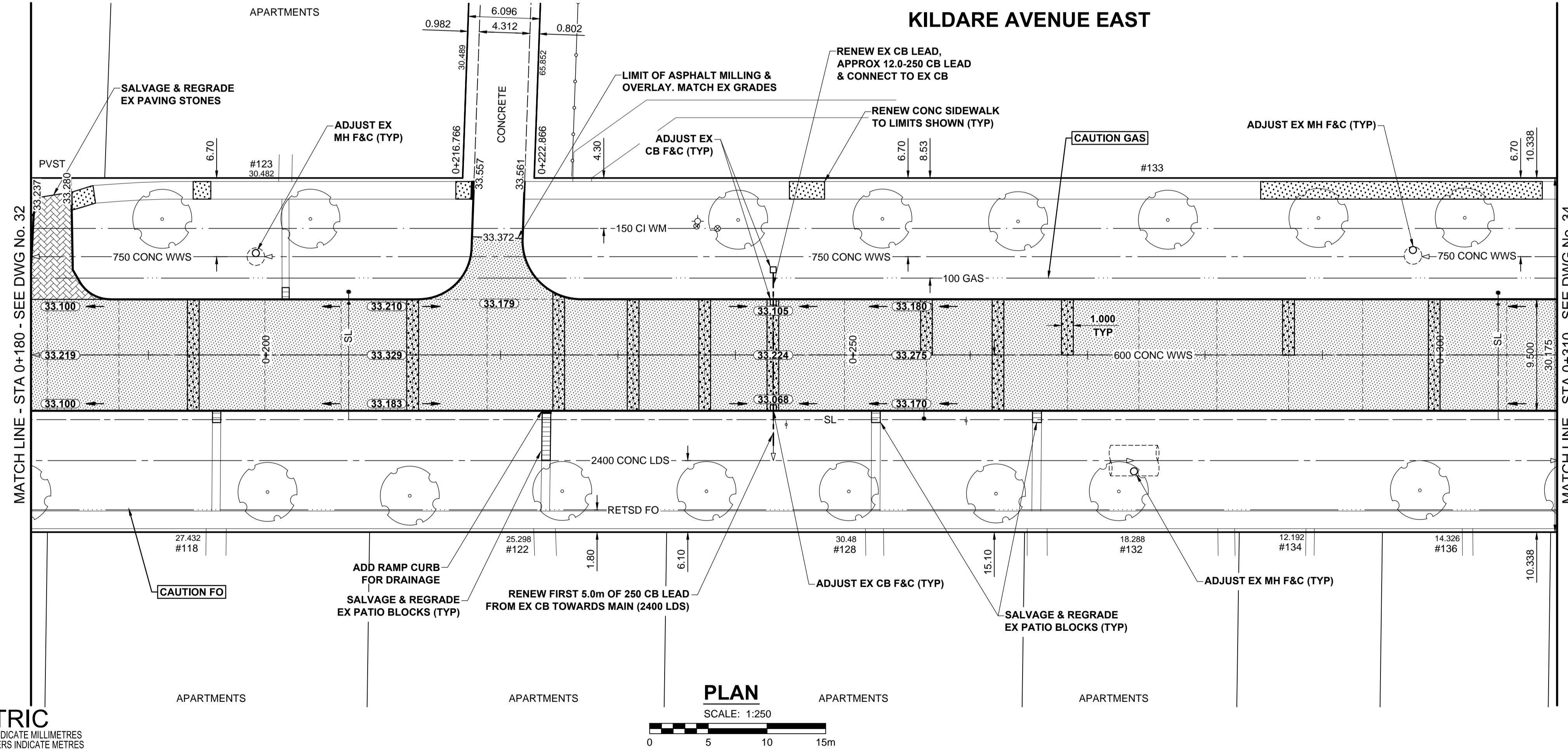


A1 SIZE 594mm x 841mm



PLOT: 3/31/2015 1:30:24 PM



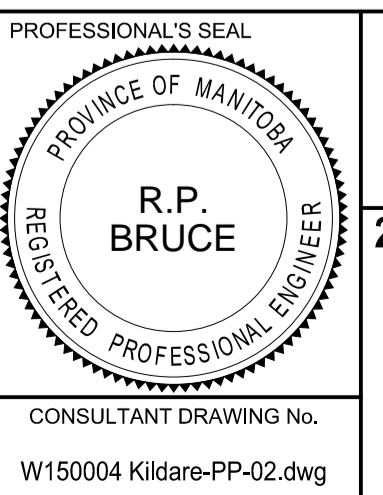
- NOTES**
1. ADJUST MH AND CB RIMS TO NEW GRADES.
 2. LAMP STANDARDS, HYDRO POLES, AND ANCHORS THAT REQUIRE TEMPORARY SUPPORT, REMOVAL OR REPLACEMENT, TO BE DONE SO AT THE EXPENSE OF THE CONTRACTOR AS NECESSARY.
 3. CONTRACTOR TO REGRADE/RENEW EXISTING PRIVATE SIDEWALKS TO LIMITS AS SHOWN. SIDEWALKS TO BE RENEWED WITH CONCRETE UNLESS NOTED OTHERWISE.
 4. CONTRACTOR TO TAKE PRECAUTIONARY STEPS TO PROTECT EXISTING TREES WITHIN THE LIMITS OF CONSTRUCTION FROM DAMAGE FROM CONSTRUCTION ACTIVITIES AS OUTLINED IN THE SPECIFICATIONS.
 5. CONTRACTOR TO CONFIRM THE LOCATION OF ALL UTILITIES/SERVICES IN THE FIELD PRIOR TO CONSTRUCTION.
 6. MODIFIED BARRIER CURB TO BE USED AT ALL INTERSECTION RADII, BACK LANE RADII AND BULLNOSES.
 7. CONTRACTOR TO OVERLAY DRIVEWAYS TO ENSURE POSITIVE DRAINAGE TO NEW STREET GRADES. FINAL LIMITS TO BE DETERMINED IN THE FIELD BY CONTRACT ADMINISTRATOR.
 8. CB SD-023 & SD-024 OFFSETS ARE DIMENSIONED TO BOC. CB SD-025 OFFSETS ARE DIMENSIONED O.C.
 9. ADD 200.000m TO ABBREVIATED ELEVATIONS TO OBTAIN GEODETIC ELEVATIONS.
 10. REFER TO BID OPPORTUNITY FOR DETAILS REGARDING TRAFFIC MANAGEMENT.

METRIC
WHOLE NUMBERS INDICATE MILLIMETRES
DECIMALIZED NUMBERS INDICATE METRES

	GAS		MANHOLE		CONCRETE PAVEMENT	LOCATION APPROVED UNDERGROUND STRUCTURES SUPR. U/G STRUCTURES DATE COMMITTEE NOTE: LOCATION OF UNDERGROUND STRUCTURES AS SHOWN ARE BASED ON THE BEST INFORMATION AVAILABLE. BUT NO GUARANTEE IS GIVEN THAT ALL EXISTING UTILITIES ARE SHOWN OR THAT THE GIVEN LOCATIONS ARE EXACT. CONFIRMATION OF EXISTENCE AND EXACT LOCATION OF ALL SERVICES MUST BE OBTAINED FROM THE INDIVIDUAL UTILITIES BEFORE PROCEEDING WITH CONSTRUCTION.
	MTS		CATCH BASIN / CATCH PIT		CONC SIDEWALK / MEDIAN	
	HYDRO		CURB INLET WITH BOX		ASPHALT PAVEMENT	
	CATV / FIBRE OPTIC		TREE		PAVING STONE	
	TRAFFIC SIGNALS / PIT		TEST HOLE		GRAVEL	
	LAND DRAINAGE SEWER		PROPERTY LINE		RAMP CURB	
	SANITARY/COMBINED SEWER		SURVEY BAR		PLANING / REMOVAL	
	SEWER SERV/DRAINAGE CONN		FENCE			
	WATERMAIN		BOC / EDGE OF PAVEMENT			
	SUBDRAIN		ELEVATION (33.100)			
	DITCH		TRAFFIC SIGN			
	EXISTING		LEGEND - PLAN		EXISTING	
	NEW		LEGEND - PLAN		NEW	

GBM 10-039	N.E. Cor. Kildare Ave. E. & Leola St. 7ft on top of 0.05 m dia. x 2.4 m iron pipe, 6.4 m S. of N.L. of Kildare Ave. E. & 4.57 m W. of E.L. of Leola St.	15/03/16	RPB
ELEV 233.502		15/03/16	RPB
No.	REVISIONS	YYMMDD	BY
B	ISSUED FOR TENDER	15/03/16	RPB
A	ISSUED FOR CITY REVIEW	15/03/16	RPB
DATE	15/03/16		

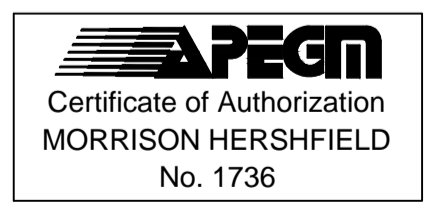
MORRISON HERSHFELD	
DESIGNED BY	RPB
CHECKED BY	WRJ
DRAWN BY	DML
APPROVED BY	BWB
HOR. SCALE	1:250
VERT. SCALE	1:10
RELEASED FOR CONSTRUCTION	
DATE	15/03/16



THE CITY OF WINNIPEG
PUBLIC WORKS DEPARTMENT
ENGINEERING DIVISION

2015 LOCAL STREET & ALLEY RENEWAL PROGRAM
KILDARE AVENUE EAST
DAY ST TO WAYOATA ST
REHABILITATION
HORIZONTAL AND VERTICAL ALIGNMENT
STA 0+180 TO STA 0+310

CITY DRAWING NUMBER N/A
SHEET 33 OF 39
DRAWING No. 33 REV B



BID OPPORTUNITY No. 19-2015