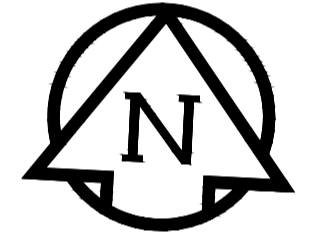
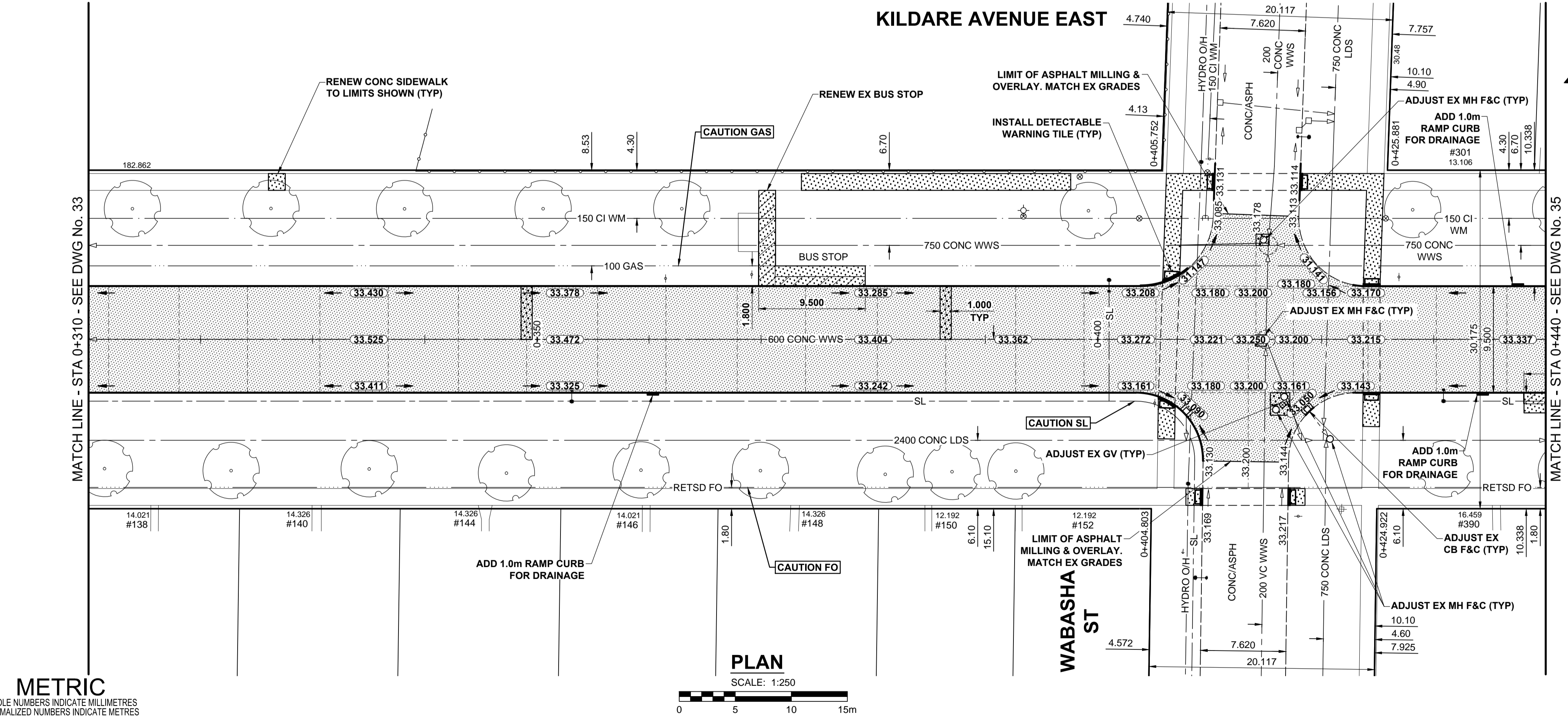
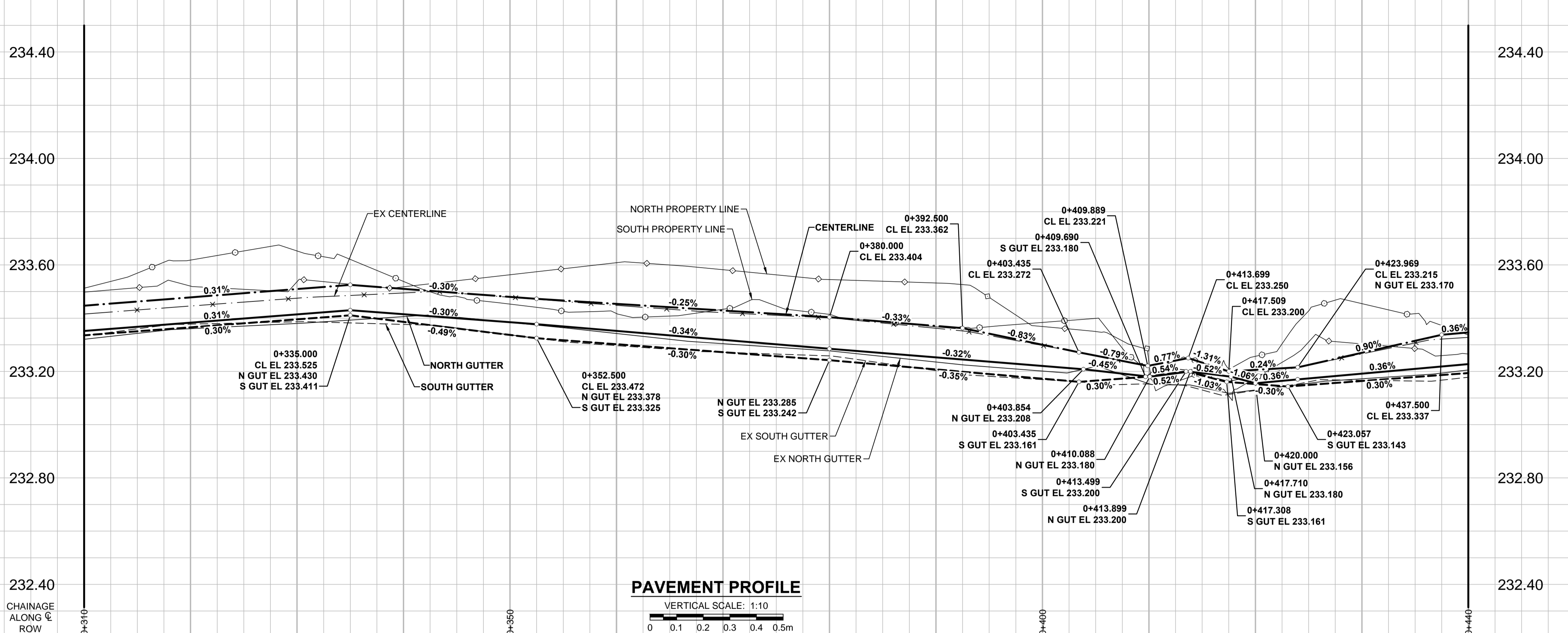


A1 SIZE 594mm x 841mm

PLOT: 3/31/2015 11:53:19 AM

FILE NAME: W150004-Kildare-PP-03.dwg Saved By: diane



- NOTES**
- ADJUST MH AND CB RIMS TO NEW GRADES.
  - LAMP STANDARDS, HYDRO POLES, AND ANCHORS THAT REQUIRE TEMPORARY SUPPORT, REMOVAL OR REPLACEMENT, TO BE DONE SO AT THE EXPENSE OF THE CONTRACTOR AS NECESSARY.
  - CONTRACTOR TO REGRADE/RENEW EXISTING PRIVATE SIDEWALKS TO LIMITS AS SHOWN. SIDEWALKS TO BE RENEWED WITH CONCRETE UNLESS NOTED OTHERWISE.
  - CONTRACTOR TO TAKE PRECAUTIONARY STEPS TO PROTECT EXISTING TREES WITHIN THE LIMITS OF CONSTRUCTION FROM DAMAGE FROM CONSTRUCTION ACTIVITIES AS OUTLINED IN THE SPECIFICATIONS.
  - CONTRACTOR TO CONFIRM THE LOCATION OF ALL UTILITIES/SERVICES IN THE FIELD PRIOR TO CONSTRUCTION.
  - MODIFIED BARRIER CURB TO BE USED AT ALL INTERSECTION RADII, BACK LANE RADII AND BULLNOSES.
  - CONTRACTOR TO OVERLAY DRIVEWAYS TO ENSURE POSITIVE DRAINAGE TO NEW STREET GRADES. FINAL LIMITS TO BE DETERMINED IN THE FIELD BY CONTRACT ADMINISTRATOR.
  - CB SD-023 & SD-024 OFFSETS ARE DIMENSIONED TO BOC. CB SD-025 OFFSETS ARE DIMENSIONED O/C.
  - ADD 200.00mm TO ABBREVIATED ELEVATIONS TO OBTAIN GEODETIC ELEVATIONS.
  - REFER TO BID OPPORTUNITY FOR DETAILS REGARDING TRAFFIC MANAGEMENT.

**METRIC**  
WHOLE NUMBERS INDICATE MILLIMETRES  
DECIMALIZED NUMBERS INDICATE METRES

---	GAS	○	MANHOLE	●	CONCRETE PAVEMENT	□	LOCATION APPROVED UNDERGROUND STRUCTURES
---	MTS	□	CATCH BASIN / CATCH PIT	■	CONC SIDEWALK / MEDIAN	---	DATE
---	HYDRO	△	CURB INLET WITH BOX	▲	ASPHALT PAVEMENT	---	COMMITTEE
---	CATV / FIBRE OPTIC	○	TREE	○	PAVING STONE	---	NOTE:
---	TRAFFIC SIGNALS / PIT	○	TEST HOLE	○	GRAVEL	---	LOCATION OF UNDERGROUND STRUCTURES AS SHOWN ARE BASED ON THE BEST INFORMATION AVAILABLE. BUT NO GUARANTEE IS GIVEN THAT ALL EXISTING UTILITIES ARE SHOWN OR THAT THE GIVEN LOCATIONS ARE EXACT. CONFIRMATION OF EXISTENCE AND EXACT LOCATION OF ALL SERVICES MUST BE OBTAINED FROM THE INDIVIDUAL UTILITIES BEFORE PROCEEDING WITH CONSTRUCTION.
---	LAND DRAINAGE SEWER	---	PROPERTY LINE	---	RAMP CURB	---	
---	SANITARY/COMBINED SEWER	---	SURVEY BAR	---	PLANING / REMOVAL	---	
---	SEWER SERV/DRAINAGE CONN	---	FENCE	---		---	
---	WATERMAIN	---	BOC / EDGE OF PAVEMENT	---		---	
---	SUBDRAIN	---	ELEVATION	---		---	
---	DITCH	---	TRAFFIC SIGN	---		---	
---	EXISTING	---	LEGEND - PLAN	---		---	
---	NEW	---	LEGEND - PLAN	---		---	

GBM 10-039	N.E. Cor. Kildare Ave. E. & Leola St. 7ft on top of 0.05 m dia. x 2.4 m iron pipe, 6.4 m S. of N.L. of Kildare Ave. E. & 4.57 m W. of E.L. of Leola St.
ELEV 233.502	#152
B	ISSUED FOR TENDER 15/03/16 RPB
A	ISSUED FOR CITY REVIEW 15/03/16 RPB
No.	REVISIONS YYMMDDI BY

<b>MORRISON HERSHFELD</b>	
DESIGNED BY RPB	CHECKED BY WRJ
DRAWN BY DML	APPROVED BY BWB
HOR. SCALE 1:250	RELEASED FOR CONSTRUCTION
VERT. SCALE 1:10	
DATE 15/03/16	DATE

PROFESSIONAL'S SEAL

PROVINCE OF MANITOBA

R.P. BRUCE

REGISTERED PROFESSIONAL ENGINEER

CONSULTANT DRAWING No. W150004 Kildare-PP-03.dwg

**THE CITY OF WINNIPEG**

PUBLIC WORKS DEPARTMENT

ENGINEERING DIVISION

2015 LOCAL STREET & ALLEY RENEWAL PROGRAM

**KILDARE AVENUE EAST**

DAY ST TO WAYOATA ST

REHABILITATION

HORIZONTAL AND VERTICAL ALIGNMENT

STA 0+310 TO STA 0+440

CITY DRAWING NUMBER N/A

SHEET 34 OF 39

DRAWING No. REV 34 B

BID OPPORTUNITY No. 19-2015