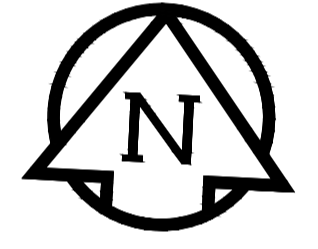
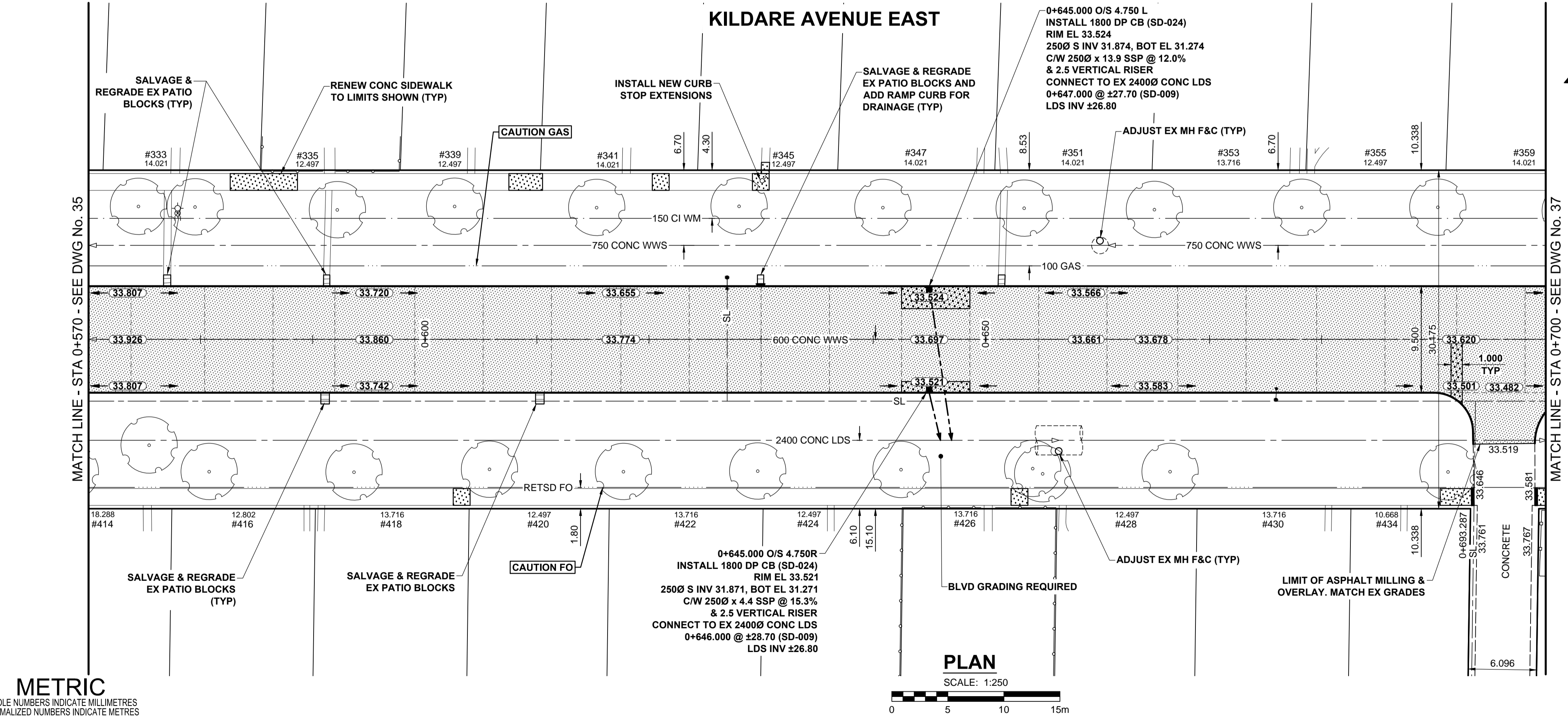
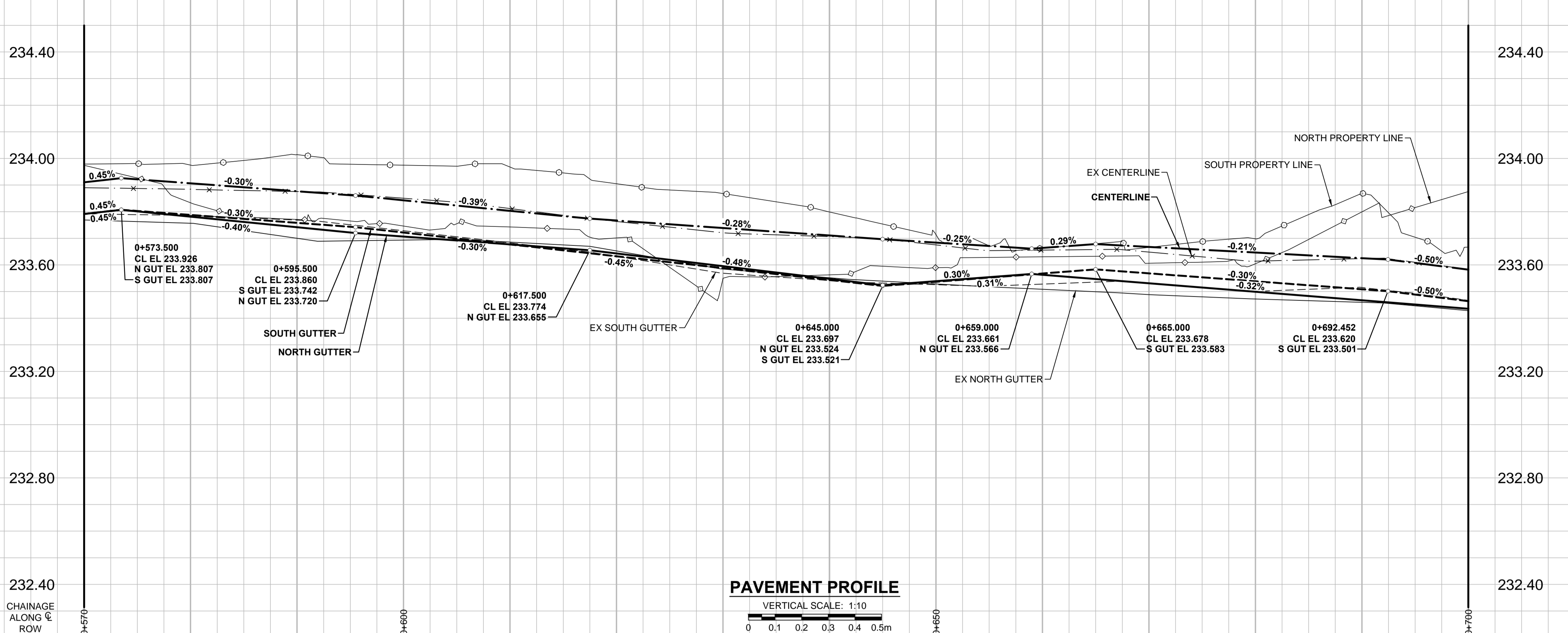


A1 SIZE 594mm x 841mm
PLOT: 3/31/2015 11:54:42 AM
FILE NAME: W150004-Kildare-PP-05.dwg Saved By: diane



- NOTES**
- ADJUST MH AND CB RIMS TO NEW GRADES.
 - LAMP STANDARDS, HYDRO POLES, AND ANCHORS THAT REQUIRE TEMPORARY SUPPORT, REMOVAL OR REPLACEMENT, TO BE DONE SO AT THE EXPENSE OF THE CONTRACTOR AS NECESSARY.
 - CONTRACTOR TO REGRADE/RENEW EXISTING PRIVATE SIDEWALKS TO LIMITS AS SHOWN. SIDEWALKS TO BE RENEWED WITH CONCRETE UNLESS NOTED OTHERWISE.
 - CONTRACTOR TO TAKE PRECAUTIONARY STEPS TO PROTECT EXISTING TREES WITHIN THE LIMITS OF CONSTRUCTION FROM DAMAGE FROM CONSTRUCTION ACTIVITIES AS OUTLINED IN THE SPECIFICATIONS.
 - CONTRACTOR TO CONFIRM THE LOCATION OF ALL UTILITIES/SERVICES IN THE FIELD PRIOR TO CONSTRUCTION.
 - MODIFIED BARRIER CURB TO BE USED AT ALL INTERSECTION RADII, BACK LANE RADII AND BULLNOSES.
 - CONTRACTOR TO OVERLAY DRIVEWAYS TO ENSURE POSITIVE DRAINAGE TO NEW STREET GRADES. FINAL LIMITS TO BE DETERMINED IN THE FIELD BY CONTRACT ADMINISTRATOR.
 - CB SD-023 & SD-024 OFFSETS ARE DIMENSIONED TO BOC. CB SD-025 OFFSETS ARE DIMENSIONED O.C.
 - ADD 200.000m TO ABBREVIATED ELEVATIONS TO OBTAIN GEODETIC ELEVATIONS.
 - REFER TO BID OPPORTUNITY FOR DETAILS REGARDING TRAFFIC MANAGEMENT.

METRIC
WHOLE NUMBERS INDICATE MILLIMETRES
DECIMALIZED NUMBERS INDICATE METRES

	GAS		MANHOLE
	MTS		CATCH BASIN / CATCH PIT
	HYDRO		CURB INLET WITH BOX
	CATV / FIBRE OPTIC		TREE
	TRAFFIC SIGNALS / PIT		TEST HOLE
	LAND DRAINAGE SEWER		PROPERTY LINE
	SANITARY/COMBINED SEWER		SURVEY BAR
	SEWER SERV/DRAINAGE CONN		FENCE
	WATERMAIN		BOC / EDGE OF PAVEMENT
	SUBDRAIN		ELEVATION (33.100)
	DITCH		TRAFFIC SIGN
	EXISTING		NEW

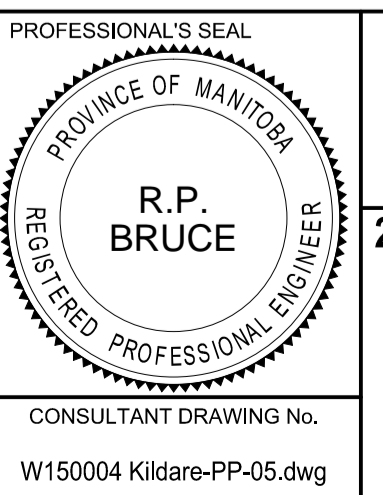
LOCATION APPROVED UNDERGROUND STRUCTURES

SUPR. U/G STRUCTURES DATE COMMITTEE

NOTE:
LOCATION OF UNDERGROUND STRUCTURES AS SHOWN ARE BASED ON THE BEST INFORMATION AVAILABLE. BUT NO GUARANTEE IS GIVEN THAT ALL EXISTING UTILITIES ARE SHOWN OR THAT THE GIVEN LOCATIONS ARE EXACT. CONFIRMATION OF EXISTENCE AND EXACT LOCATION OF ALL SERVICES MUST BE OBTAINED FROM THE INDIVIDUAL UTILITIES BEFORE PROCEEDING WITH CONSTRUCTION.

GBM 10-039	N.E. Cor. Kildare Ave. E. & Leola St. 7ft on top of 0.05 m dia. x 2.4 m iron pipe, 6.4 m S. of N.L. of Kildare Ave. E. & 4.57 m W. of E.L. of Leola St.
ELEV 233.502	
B	ISSUED FOR TENDER 15/03/16 RPB
A	ISSUED FOR CITY REVIEW 15/03/16 RPB
No.	REVISIONS YYMMDDI BY

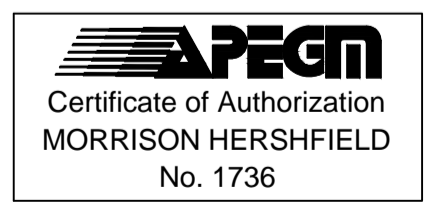
DESIGNED BY	RPB
CHECKED BY	WRJ
DRAWN BY	DML
APPROVED BY	BWB
HOR. SCALE	1:250
VERT. SCALE	1:10
DATE	15/03/16



THE CITY OF WINNIPEG
PUBLIC WORKS DEPARTMENT
ENGINEERING DIVISION

2015 LOCAL STREET & ALLEY RENEWAL PROGRAM
KILDARE AVENUE EAST
DAY ST TO WAYOATA ST
REHABILITATION
HORIZONTAL AND VERTICAL ALIGNMENT
STA 0+570 TO STA 0+700

CITY DRAWING NUMBER	N/A
SHEET	36 OF 39
DRAWING No.	REV
36	B



BID OPPORTUNITY No. 19-2015