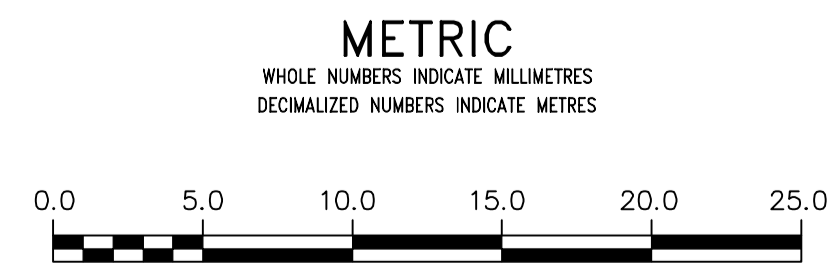


NOTE: CHAINAGES SHOWN ARE ALONG E. R. OF POWERS STREET

POWERS STREET



**WARNING**  
 IF POWER EQUIPMENT OR EXPLOSIVES ARE TO BE USED FOR EXCAVATION ON THIS PROJECT THE CONTRACTOR MUST:  
 1) NOTIFY THE GAS COMPANY OF THE PROPOSED LOCATION OF EXCAVATION.  
 2) TAKE PRECAUTION TO AVOID DAMAGE TO GAS COMPANY INSTALLATIONS.  
 SEE PROVINCIAL REGULATION 21072 FOR DETAILS

LOCATION APPROVED UNDERGROUND STRUCTURES  
 SUPV. U/G STRUCTURES COMMITTEE DATE  
 NOTE:  
 LOCATION OF UNDERGROUND STRUCTURES AS SHOWN ARE BASED ON THE BEST INFORMATION AVAILABLE BUT NO GUARANTEE IS GIVEN THAT ALL EXISTING UTILITIES ARE SHOWN OR THAT THE GIVEN LOCATIONS ARE EXACT. CONFIRMATION OF EXISTENCE AND EXACT LOCATION OF ALL SERVICES MUST BE OBTAINED FROM THE INDIVIDUAL UTILITIES BEFORE PROCEEDING WITH CONSTRUCTION.

B.M. ELEV.	
CONSTRUCTION COMPLETION DATE: YYYY MM DD	
DESIGNED BY	MK
CHECKED BY	SC
DRAWN BY	RS
APPROVED BY	KZ
SCALE:	
HORIZONTAL	1:250
VERTICAL	1:50
DATE	2015 03 18
PLLOT DATE:	2015 03 18
NO.	REVISIONS
	DATE
	BY

ENGINEER'S SEAL  
 ORIGINAL SIGNED BY K.R. ZUREK 15/03/18  
 CONSULTANT DRAWING NUMBER

**THE CITY OF WINNIPEG**  
 WATER AND WASTE DEPARTMENT  
 ENGINEERING DIVISION  
 2015 WATERMAIN RENEWALS  
 POWERS STREET  
 PRICHARD AVENUE TO  
 57' N OF MANITOBA AVENUE

Winnipeg  
 SHEET 9 OF 12  
 CITY DRAWING NUMBER  
 D-13906

VALVES TO BE COUNTER-CLOCKWISE TO CLOSE (RED OPERATING NUT)