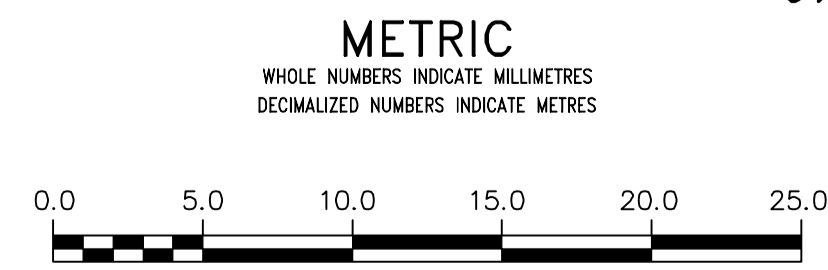
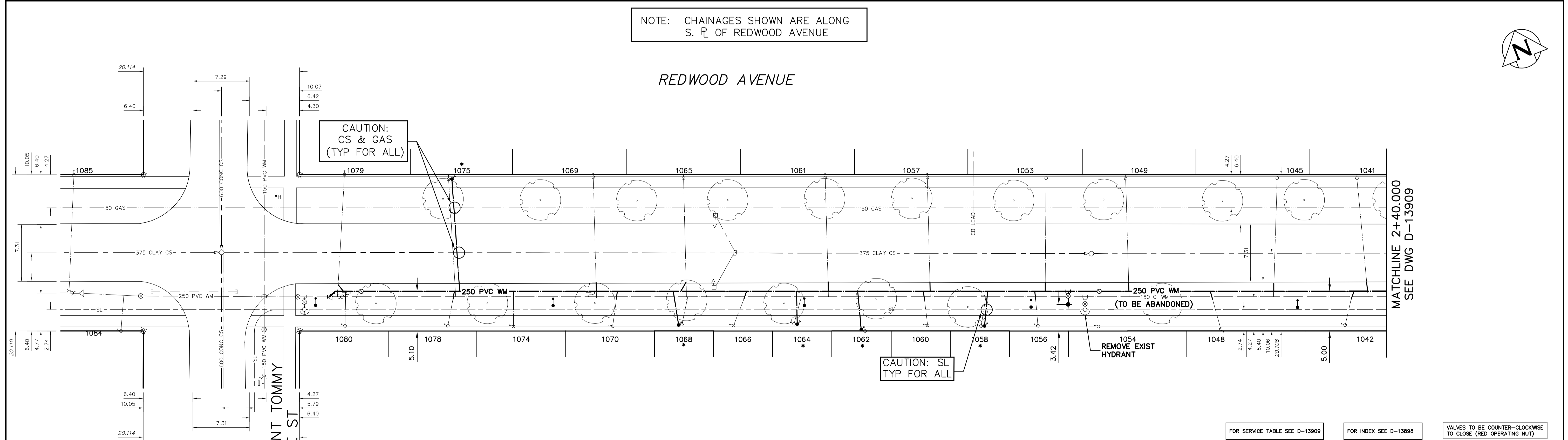
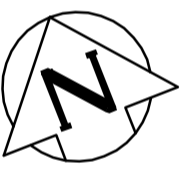


NOTE: CHAINAGES SHOWN ARE ALONG S. P. OF REDWOOD AVENUE



**WARNING**  
 IF POWER EQUIPMENT OR EXPLOSIVES ARE TO BE USED FOR EXCAVATION ON THIS PROJECT THE CONTRACTOR MUST:  
 1) NOTIFY THE GAS COMPANY OF THE PROPOSED LOCATION OF EXCAVATION.  
 2) TAKE PRECAUTION TO AVOID DAMAGE TO GAS COMPANY INSTALLATIONS.  
 SEE PROVINCIAL REGULATION 21072 FOR DETAILS

**LOCATION APPROVED UNDERGROUND STRUCTURES**  
 SUPV. U/G STRUCTURES COMMITTEE DATE  
 NOTE:  
 LOCATION OF UNDERGROUND STRUCTURES AS SHOWN ARE BASED ON THE BEST INFORMATION AVAILABLE BUT NO GUARANTEE IS GIVEN THAT ALL EXISTING UTILITIES ARE SHOWN OR THAT THE GIVEN LOCATIONS ARE EXACT. CONFIRMATION OF EXISTENCE AND EXACT LOCATION OF ALL SERVICES MUST BE OBTAINED FROM THE INDIVIDUAL UTILITIES BEFORE PROCEEDING WITH CONSTRUCTION.

B.M. ELEV.	
CONSTRUCTION COMPLETION DATE: YYYY MM DD	
DESIGNED BY	MK
CHECKED BY	SC
DRAWN BY	RS
APPROVED BY	KZ
SCALE:	
HORIZONTAL	1:250
VERTICAL	1:50
DATE	2015 03 18
DATE	
NO.	REVISIONS
DATE	BY
PLOT DATE:	2015 03 18

**ENGINEER'S SEAL**  
 ORIGINAL SIGNED BY K.R. ZUREK 15/03/18  
 CONSULTANT DRAWING NUMBER

FOR SERVICE TABLE SEE D-13909 FOR INDEX SEE D-13908 VALVES TO BE COUNTER-CLOCKWISE TO CLOSE (RED OPERATING NUT)

**THE CITY OF WINNIPEG**  
 WATER AND WASTE DEPARTMENT  
 ENGINEERING DIVISION  
 2015 WATERMAIN RENEWALS  
 REDWOOD AVENUE  
 SARGENT TOMMY PRINCE STREET TO  
 140 E OF SARGENT TOMMY PRINCE STREET

SHEET 11 OF 12  
 CITY DRAWING NUMBER  
 D-13908