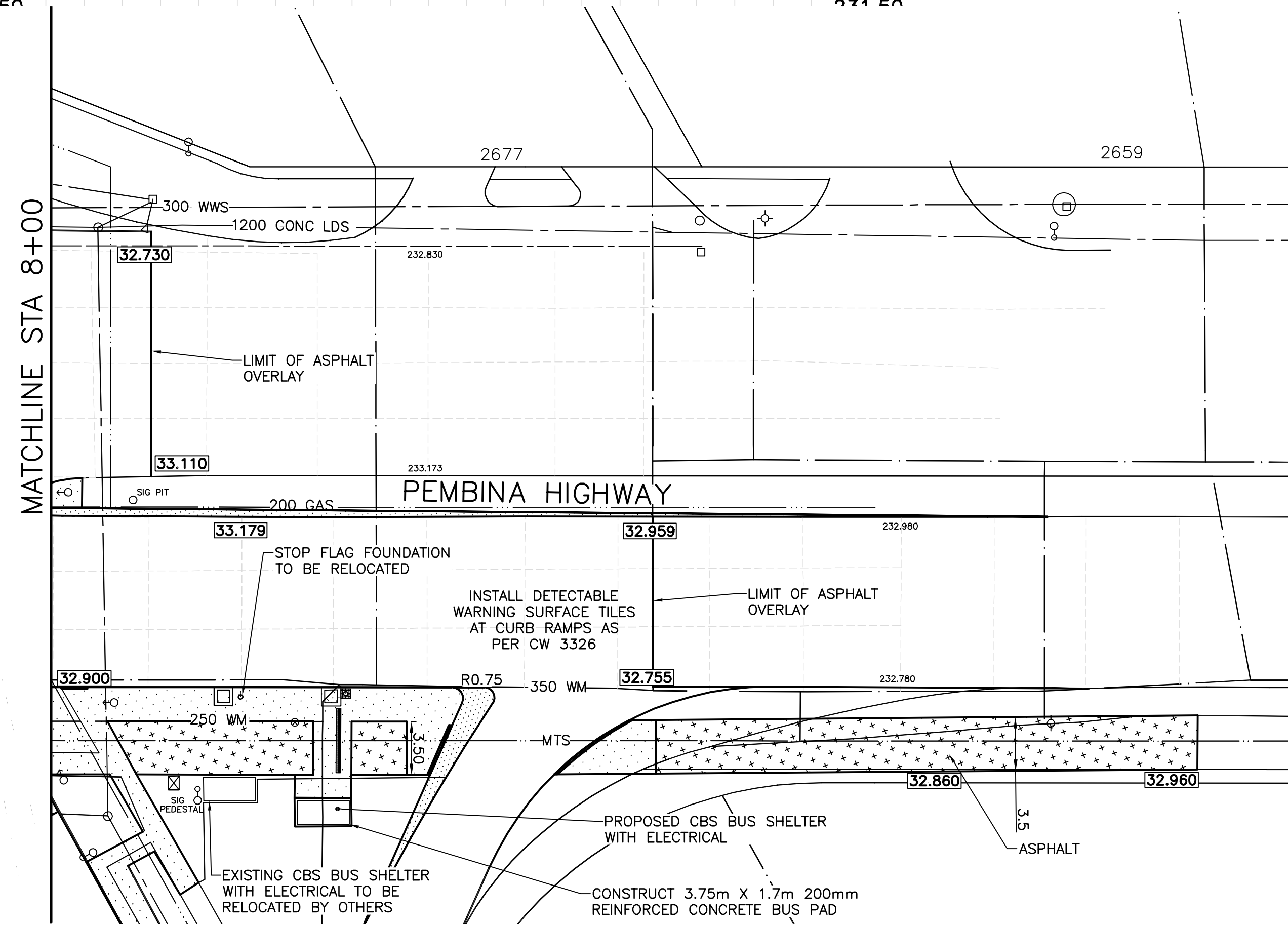


MATCHLINE STA 8+00

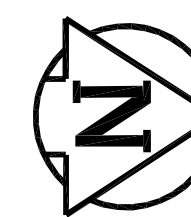
8+00

8+25

8+50



METRIC
WHOLE NUMBERS INDICATE MILLIMETRES
DECIMALIZED NUMBERS INDICATE METRES



PRELIMINARY
NOT TO BE USED FOR
CONSTRUCTION

- CONSTRUCTION NOTES**
- 1) CURB REPLACEMENT AS DIRECTED BY THE CONTRACT ADMINISTRATOR.
 - 2) ALL STREET RADIUS CURB UNDER 15M RADIUS SHALL BE REPLACED AS MODIFIED OR AS DIRECTED BY THE CONTRACT ADMINISTRATOR.
 - 3) PAVEMENT REPAIRS SHOWN ARE ONLY A REPRESENTATIVE SAMPLE OF THE TENDERED QUANTITIES.
 - 4) ASPHALT TIE-INS ON APPROACHES TO BE DETERMINED IN THE FIELD BY THE CONTRACT ADMINISTRATOR.
 - 5) ALL BULLNOSES TO HAVE SLOPED FACE.

- WARNING**
- IF POWER EQUIPMENT OR EXPLOSIVES ARE TO BE USED FOR EXCAVATION ON THIS PROJECT THE CONTRACTOR MUST:
- 1) OBTAIN CLEARANCE FROM THE GAS UTILITY PRIOR TO EXCAVATION.
 - 2) TAKE PRECAUTION TO AVOID DAMAGE TO GAS UTILITY INSTALLATIONS.
- SEE PROVINCIAL REGULATION 210/72 FOR DETAILS

BID OPPORTUNITY NO. 2-2015

EXISTING	LEGEND - PLAN	PROPOSED	EXISTING	LEGEND - PLAN	PROPOSED	EXISTING	LEGEND - PROFILE	PROPOSED
	HYDRANT			LDS/WWS			SOUTHBOUND GUTTER	
	VALVE			WATERMAIN			SOUTHBOUND MEDIAN	
	CURB STOP			GAS			S/B PROPERTY LINE	
	CONCRETE SIDEWALK			TRAFFIC SIGNALS				
	O.L.S.			CONCRETE				
	MANHOLE			CURB RENEWAL				
	CATCH BASIN			ELEVATIONS				
	CURB INLET			PROPERTY LINE				
	PEDESTRIAN CROSSING SIGNAL			SURVEY BAR				
	HYDRO POLE			ASPHALT				
	TRAFFIC SIGNAL POLE			RAMP CURB				

LOCATION APPROVED UNDERGROUND STRUCTURES

DATE: _____

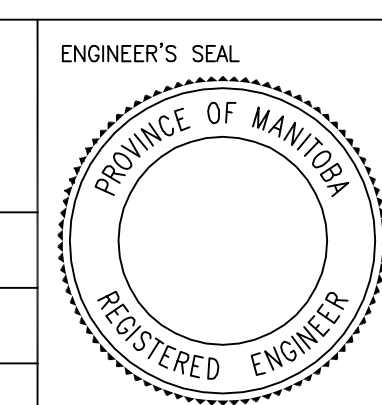
NOTE:
LOCATION OF UNDERGROUND STRUCTURES AS SHOWN ARE BASED ON THE BEST INFORMATION AVAILABLE. BUT NO GUARANTEE IS GIVEN THAT ALL EXISTING UTILITIES ARE SHOWN OR THAT THE GIVEN LOCATIONS ARE EXACT. CONFIRMATION OF EXISTENCE AND EXACT LOCATION OF ALL SERVICES MUST BE OBTAINED FROM THE INDIVIDUAL UTILITIES BEFORE PROCEEDING WITH CONSTRUCTION.

B.M. 1B @ S/E CORN. OF PEMBINA HWY & KILLARNEY AVE. ELEV. 231.834

NO.	REVISIONS	DATE	BY
1.	SUBMIT FOR PLAN APPROVAL	14/12/09	E.H.
2.	SUBMIT FOR ENGINEERS REVIEW	15/02/06	E.H.

**ENGINEERING DIVISION
TECHNOLOGY SERVICES BRANCH
106 - 1155 PACIFIC AVE**

DESIGNED BY: E.H.	CHECKED BY: D.T./ A.P.
DRAWN BY: E.H.	APPROVED BY:
HOR. SCALE: 1 : 250	
VERTICAL: 1 : 10	
DATE: 2015/03/10	



THE CITY OF WINNIPEG
PUBLIC WORKS DEPARTMENT

CITY DRAWING NUMBER
P-3462-06
SHEET 6 OF 10

PEMBINA HIGHWAY
REHABILITATION / ACTIVE TRANSPORTATION CORRIDOR
AND ASSOCIATED WORKS
FROM STA. 8+00 TO STA. 8+40

6