

**PRELIMINARY**  
NOT TO BE USED FOR  
CONSTRUCTION

- CONSTRUCTION NOTES**
- 1) CURB REPLACEMENT AS DIRECTED BY THE CONTRACT ADMINISTRATOR.
  - 2) ALL STREET RADIUS CURB UNDER 15M RADIUS SHALL BE REPLACED AS MODIFIED OR AS DIRECTED BY THE CONTRACT ADMINISTRATOR.
  - 3) PAVEMENT REPAIRS SHOWN ARE ONLY A REPRESENTATIVE SAMPLE OF THE TENDERED QUANTITIES.
  - 4) ASPHALT TIE-INS ON APPROACHES TO BE DETERMINED IN THE FIELD BY THE CONTRACT ADMINISTRATOR.
  - 5) ALL BULLNOSES TO HAVE SLOPED FACE.

**WARNING**

IF POWER EQUIPMENT OR EXPLOSIVES ARE TO BE USED FOR EXCAVATION ON THIS PROJECT THE CONTRACTOR MUST:

- 1) OBTAIN CLEARANCE FROM THE GAS UTILITY PRIOR TO EXCAVATION.
- 2) TAKE PRECAUTION TO AVOID DAMAGE TO GAS UTILITY INSTALLATIONS.

SEE PROVINCIAL REGULATION 210/72 FOR DETAILS

METRIC  
WHOLE NUMBERS INDICATE MILLIMETRES  
DECIMALIZED NUMBERS INDICATE METRES

BID OPPORTUNITY NO. 2-2015

EXISTING	LEGEND - PLAN	PROPOSED	EXISTING	LEGEND - PLAN	PROPOSED	EXISTING	LEGEND - PROFILE	PROPOSED
	HYDRANT			LDS/WWS			SOUTHBOUND GUTTER	
	VALVE			WATERMAIN			SOUTHBOUND MEDIAN	
	CURB STOP			GAS			S/B PROPERTY LINE	
	CONCRETE SIDEWALK			TRAFFIC SIGNALS				
	O.L.S.			CONCRETE				
	MANHOLE			CURB RENEWAL				
	CATCH BASIN			ELEVATIONS	[231.000]			
	CURB INLET			PROPERTY LINE				
	PEDESTRIAN CROSSING SIGNAL			SURVEY BAR				
	HYDRO POLE			GEODETIC BENCH MARK				
	TRAFFIC SIGNAL POLE			RAMP CURB				

**LOCATION APPROVED UNDERGROUND STRUCTURES**

SUPR. U/G STRUCTURES COMMITTEE DATE

NOTE:  
LOCATION OF UNDERGROUND STRUCTURES AS SHOWN ARE BASED ON THE BEST INFORMATION AVAILABLE. BUT NO GUARANTEE IS GIVEN THAT ALL EXISTING UTILITIES ARE SHOWN OR THAT THE GIVEN LOCATIONS ARE EXACT. CONFIRMATION OF EXISTENCE AND EXACT LOCATION OF ALL SERVICES MUST BE OBTAINED FROM THE INDIVIDUAL UTILITIES BEFORE PROCEEDING WITH CONSTRUCTION.

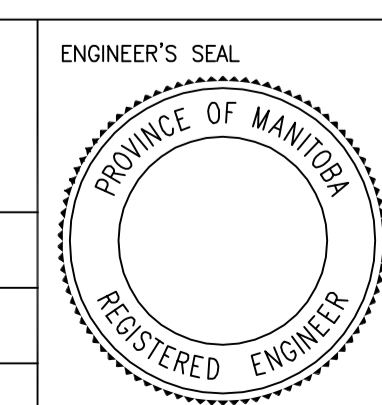
B.M. 10 @ S/E CORN. OF PEMBINA HWY & KILLARNEY AVE. ELEV. 231.834

NO.	REVISIONS	DATE	BY
2.	SUBMIT FOR ENGINEERS REVIEW	15/02/06	E.H.
1.	SUBMIT FOR PLAN APPROVAL	14/12/05	E.H.

**ENGINEERING DIVISION  
TECHNOLOGY SERVICES BRANCH  
106 - 1155 PACIFIC AVE**

DESIGNED BY E.H.	CHECKED BY D.T./ A.P.
DRAWN BY E.H.	APPROVED BY

HOR. SCALE: 1 : 250  
VERTICAL: 1 : 10  
DATE: 2015/03/10



**THE CITY OF WINNIPEG**  
PUBLIC WORKS DEPARTMENT

**PEMBINA HIGHWAY**  
FROM KIRKBRIDGE DRIVE TO BAIRDMORE BOULEVARD NORTH LEG  
REHABILITATION / ACTIVE TRANSPORTATION CORRIDOR  
AND ASSOCIATED WORKS  
PEMBINA HIGHWAY AND DALHOUSIE DRIVE INTERSECTION

CITY DRAWING NUMBER P-3462-07	SHEET 7 OF 10
7	