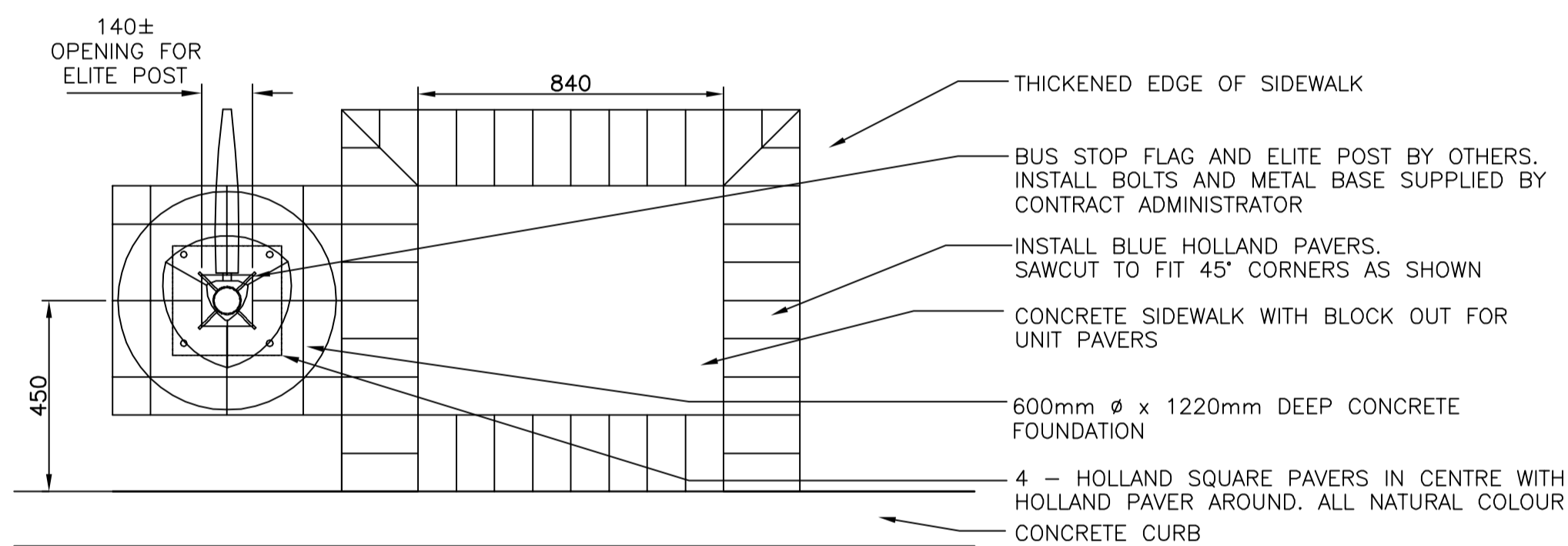


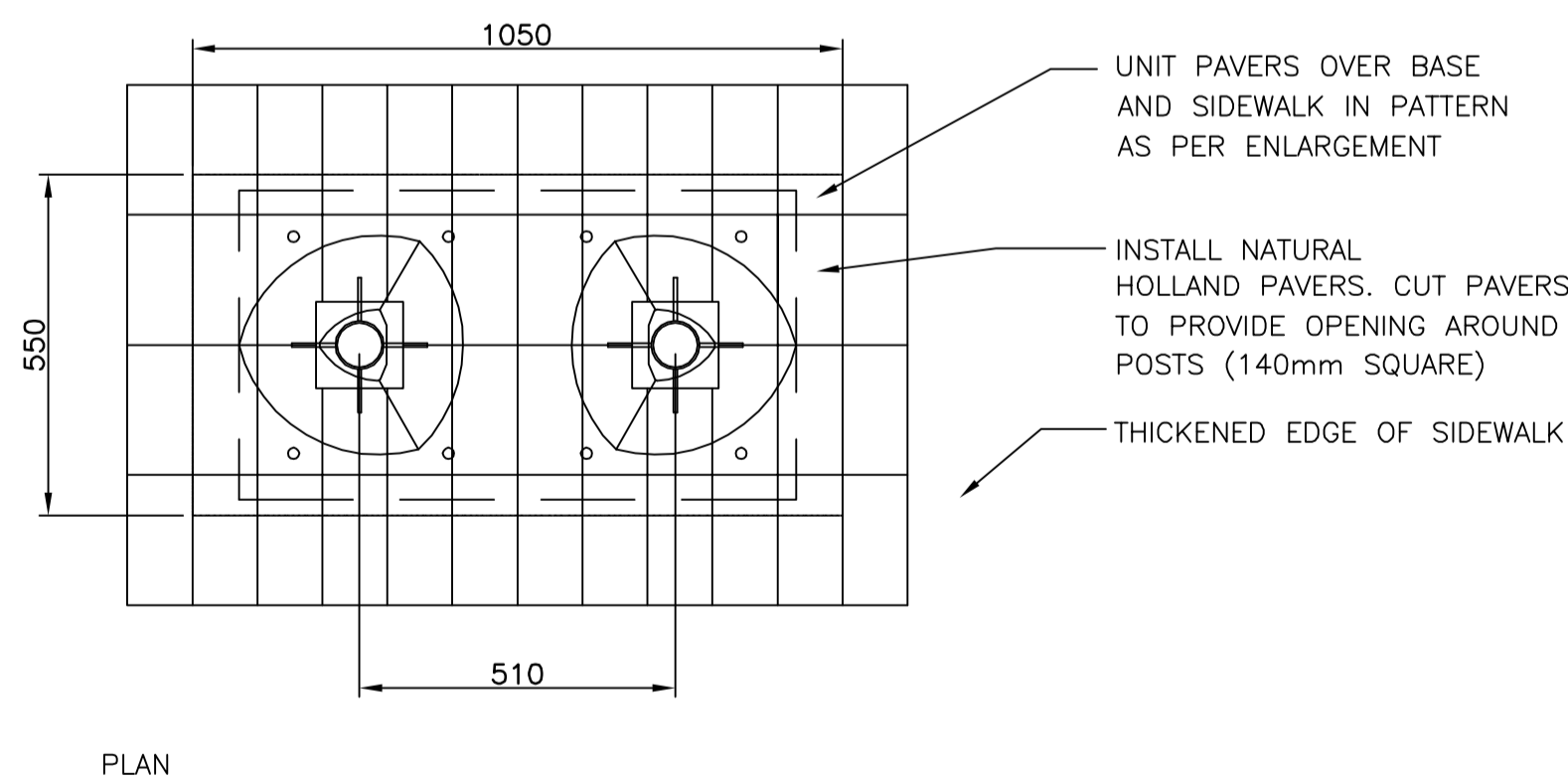
DETAIL C: BUS STOP BOARDING PLATFORM WITH SHELTER

N.T.S.



SECTION

SECTION  
BUS STOP FLAG FOUNDATION  
N.T.S.



INFORMATION KIOSK PAVERS  
N.T.S.

CONCRETE FOUNDATION CONSTRUCTION NOTES

- REINFORCING STEEL**
  - CSA G30 GR. 400W
  - HOT DIP GALVANIZED
- ANCHOR BOLTS**
  - CSA G40.21 GR. 300W "J BOLTS"
- TOP OF PILE SHALL BE FORMED WITH A TUBULAR FORM (SONOTUBE) AS FOLLOWS:**
  - BORED PILES - MIN. 1000mm BELOW FINAL GRADE
  - "HYDRO-JET EXCAVATED" PILES - MIN. 1500mm BELOW FINAL GRADE
- CONCRETE - CONCRETE MATERIAL SHALL HAVE THE FOLLOWING MINIMUM PROPERTIES IN ACCORDANCE WITH CSA A23.1-04:**
  - CLASS OF EXPOSURE: S-1
  - COMPRESSIVE STRENGTH @ 56 DAYS - 35 MPa
  - WATER/CEMENTING MATERIALS RATIO = 0.4
  - AIR CONTENT: CATEGORY 2 PER TABLE 4 OF CSA A23.1-04 (4-7%)
  - CEMENT - TYPE HS OR HSb, HIGH SULPHATE RESISTANT

**PRELIMINARY**  
NOT TO BE USED FOR CONSTRUCTION

- CONSTRUCTION NOTES**
- CURB REPLACEMENT AS DIRECTED BY THE CONTRACT ADMINISTRATOR.
  - ALL STREET RADIUS CURB UNDER 15M RADIUS SHALL BE REPLACED AS MODIFIED OR AS DIRECTED BY THE CONTRACT ADMINISTRATOR.
  - PAVEMENT REPAIRS SHOWN ARE ONLY A REPRESENTATIVE SAMPLE OF THE TENDERED QUANTITIES.
  - ASPHALT TIE-INS ON APPROACHES TO BE DETERMINED IN THE FIELD BY THE CONTRACT ADMINISTRATOR.
  - ALL BULLNOSES TO HAVE SLOPED FACE.

**WARNING**

IF POWER EQUIPMENT OR EXPLOSIVES ARE TO BE USED FOR EXCAVATION ON THIS PROJECT THE CONTRACTOR MUST:

- OBTAIN CLEARANCE FROM THE GAS UTILITY PRIOR TO EXCAVATION.
- TAKE PRECAUTION TO AVOID DAMAGE TO GAS UTILITY INSTALLATIONS.

SEE PROVINCIAL REGULATION 210/72 FOR DETAILS

BID OPPORTUNITY NO. 2-2015

EXISTING	LEGEND - PLAN	PROPOSED	EXISTING	LEGEND - PLAN	PROPOSED	EXISTING	LEGEND - PROFILE	PROPOSED
⊕	HYDRANT	⊕	---	LDS/WWS	---	---	SOUTHBOUND GUTTER	---
⊕	VALVE	⊕	---	WATERMAIN	---	---	SOUTHBOUND MEDIAN	---
⊕	CURB STOP	⊕	---	GAS	---	---	S/B PROPERTY LINE	---
---	CONCRETE SIDEWALK	---	---	TRAFFIC SIGNALS	---	---		---
○	O.L.S.	○	---	CONCRETE	---	---		---
○	MANHOLE	○	---	CURB RENEWAL	---	---		---
□	CATCH BASIN	□	231.000	ELEVATIONS	[231.000]	---		---
△	CURB INLET	△	---	PROPERTY LINE	---	---		---
○	PEDESTRIAN CROSSING SIGNAL	○	---	SURVEY BAR	---	---		---
☆	HYDRO POLE	☆	---	GEODETIC BENCH MARK	---	---		---
○	TRAFFIC SIGNAL POLE	○	---	RAMP CURB	---	---		---

LOCATION APPROVED UNDERGROUND STRUCTURES

NO. 100

DATE

NOTE:  
LOCATION OF UNDERGROUND STRUCTURES AS SHOWN ARE BASED ON THE BEST INFORMATION AVAILABLE. BUT NO GUARANTEE IS GIVEN THAT ALL EXISTING UTILITIES ARE SHOWN OR THAT THE GIVEN LOCATIONS ARE EXACT. CONFIRMATION OF EXISTENCE AND EXACT LOCATION OF ALL SERVICES MUST BE OBTAINED FROM THE INDIVIDUAL UTILITIES BEFORE PROCEEDING WITH CONSTRUCTION.

NO.	REVISIONS	DATE	BY
2.	SUBMIT FOR ENGINEERS REVIEW	15/02/06	E.H.
1.	SUBMIT FOR PLAN APPROVAL	14/12/05	E.H.

B.M. 10 @ S/E CORN. OF PEMBINA HWY & KILLARNEY AVE.  
ELEV. 231.834

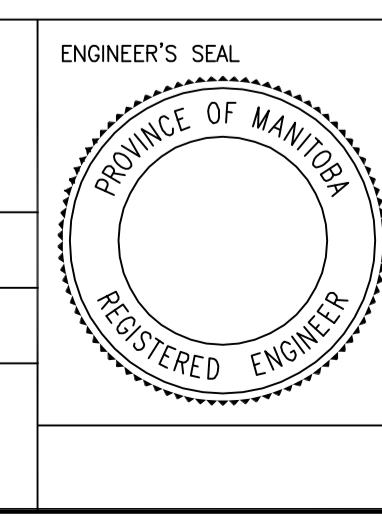
**ENGINEERING DIVISION  
TECHNOLOGY SERVICES BRANCH  
106 - 1155 PACIFIC AVE**

DESIGNED BY E.H.  
CHECKED BY D.T./ A.P.

DRAWN BY E.H.  
APPROVED BY

HOR. SCALE: 1 : 250  
VERTICAL: 1 : 10

DATE 2015/03/10



**THE CITY OF WINNIPEG**  
PUBLIC WORKS DEPARTMENT

**PEMBINA HIGHWAY**  
REHABILITATION / ACTIVE TRANSPORTATION CORRIDOR  
AND ASSOCIATED WORKS  
MISCELLANEOUS DETAILS 2 OF 2

CITY DRAWING NUMBER  
P-3462-09  
SHEET 9 OF 10

9