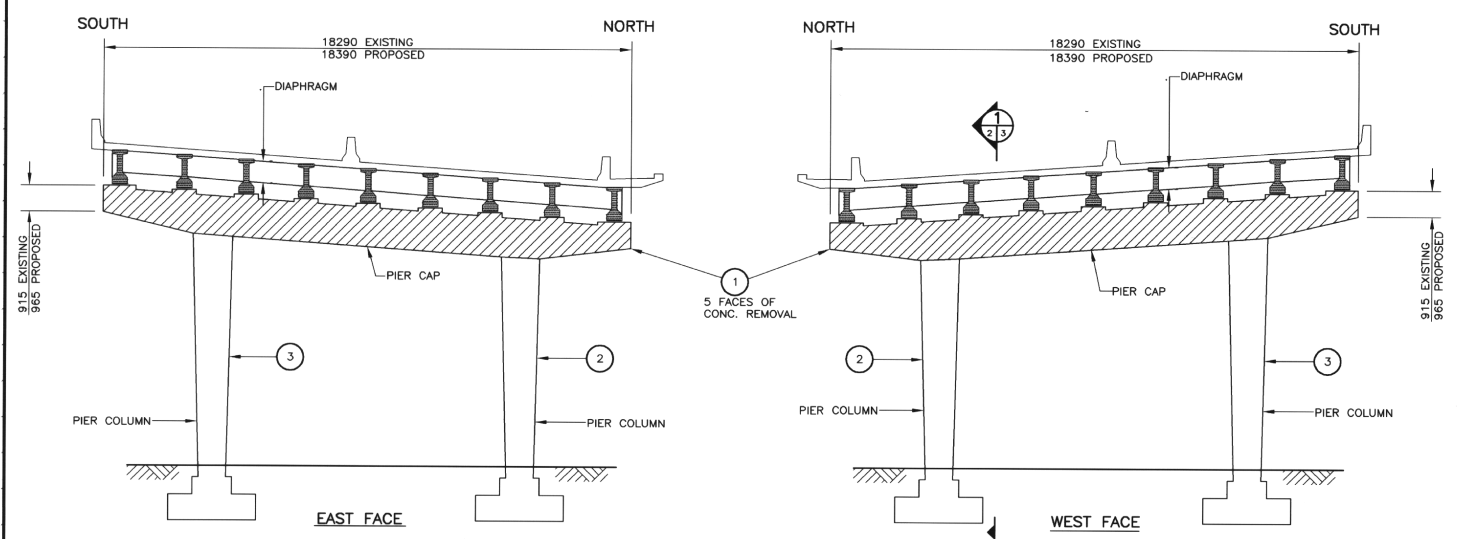


PIER 3 ELEVATIONS
1: 100

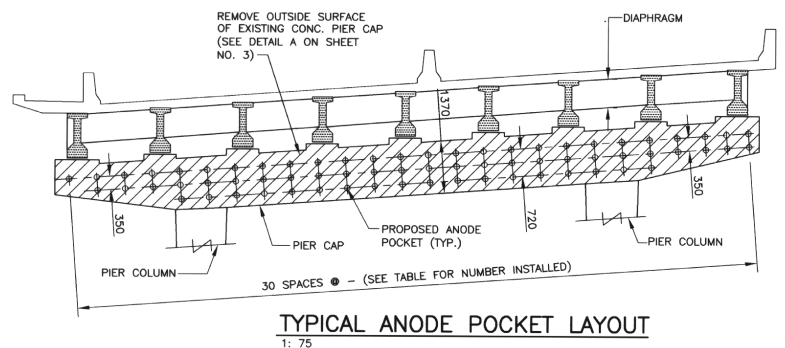


PIER 8 ELEVATIONS
1: 100

LOCATION	AREA (SQ. M.)	REMARKS	
1 PIER CAP	63.14	277 ANODES	
2 N. COLUMN	E.F. 0.53 W.F. 0.28 S.F. 2.29 N.F. 2.97	} 24 ANODES	
3 S. COLUMN	E.F. 0.47 W.F. 0.64 S.F. 1.56 N.F. -		} 17 ANODES

LOCATION	AREA (SQ. M.)	REMARKS	
1 PIER CAP	63.14	256 ANODES	
2 N. COLUMN	E.F. 0.09 W.F. 0.98 S.F. 1.08 N.F. 1.05	} 15 ANODES	
3 S. COLUMN	E.F. 1.74 W.F. 7.50 S.F. 4.41 N.F. 4.30		} 26 ANODES

RECORD DRAWING NOTE:
PREVIOUSLY HOT-DIPPED GALVANIZED BEARINGS WERE WIRE-WHEEL CLEANED WHERE RUSTED AND COATED WITH ZRC GALVANIZING PAINT. BOTH PIERS 3 & 8.



TYPICAL ANODE POCKET LAYOUT
1: 75

- APPROXIMATE ANODE SPACING:**
- 3-ROWS OF ANODES AS SHOWN AT BOTH FACES OF PIER CAP.
 - 2-ROWS OF ANODE POCKET TO THE UNDERSIDE CENTERED TO THE WIDTH OF PIER CAP. (WIDTH 914)
 - LAYOUT IN FIELD BY CONTRACT ADMINISTRATOR.

RECORD DRAWING
R.A. WIEBE, P.ENG 02/5/03
APPROVED BY: DATE:

B.M. ELEV.	DESIGNED BY: A.S.D.		
	DRAWN BY: N.B.G.		
	CHECKED BY: R.A.W.		
	APPROVED BY:		
	SCALE: HORZ. AS SHOWN VERT. DATE: AUG. 2002		
1 REVISOR	DATE	AUTHORIZED BY: ORIGINAL SIGNED BY B. EBENS-PANGER, P.Eng.	CONSULTANT PROJECT NO. 02-0220-01

THE CITY OF WINNIPEG
PUBLIC WORKS DEPARTMENT

WINNIPEG

NAIRN AVENUE OVERPASS
PIER CONCRETE REPAIR AND CORROSION MITIGATION WORKS

PIER ELEVATIONS

CITY DRAWING NUMBER: B121-02-02AC
SHEET 2 OF 3