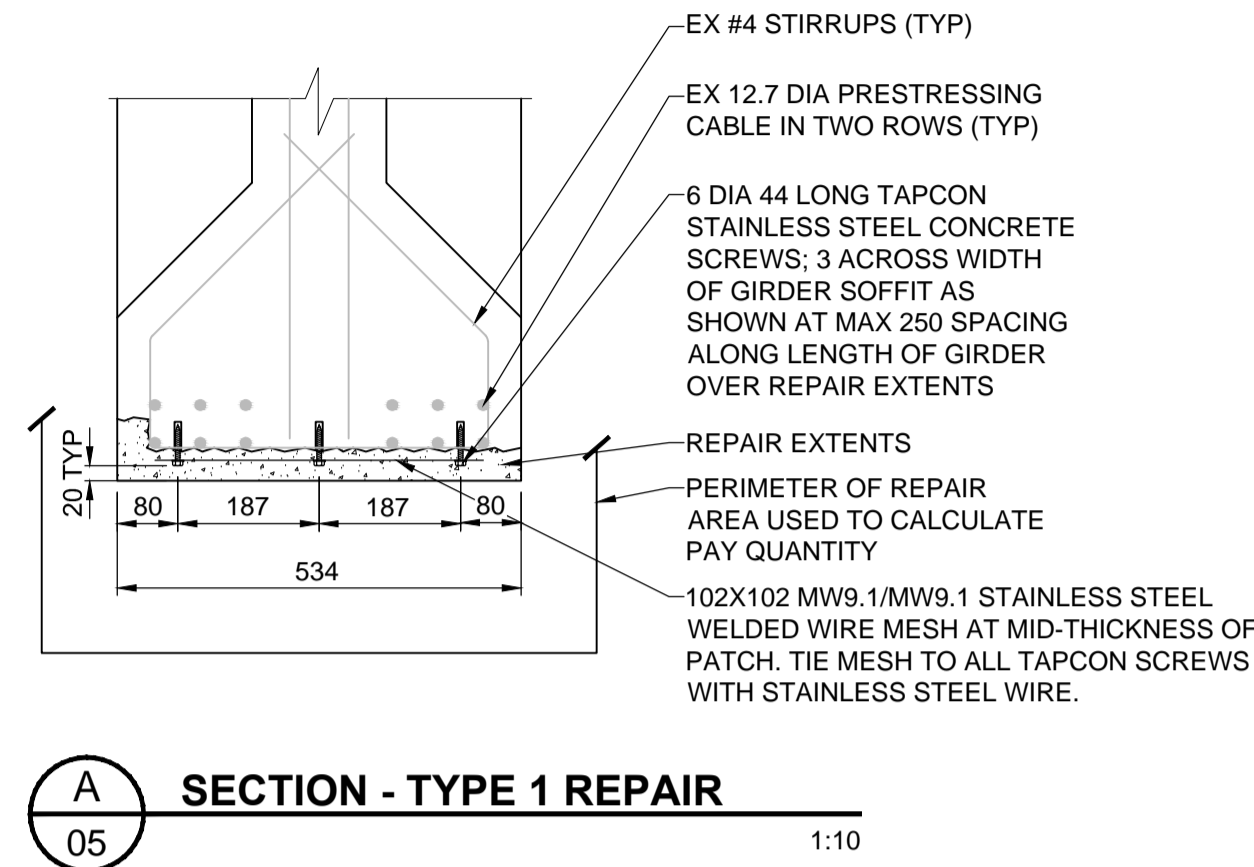
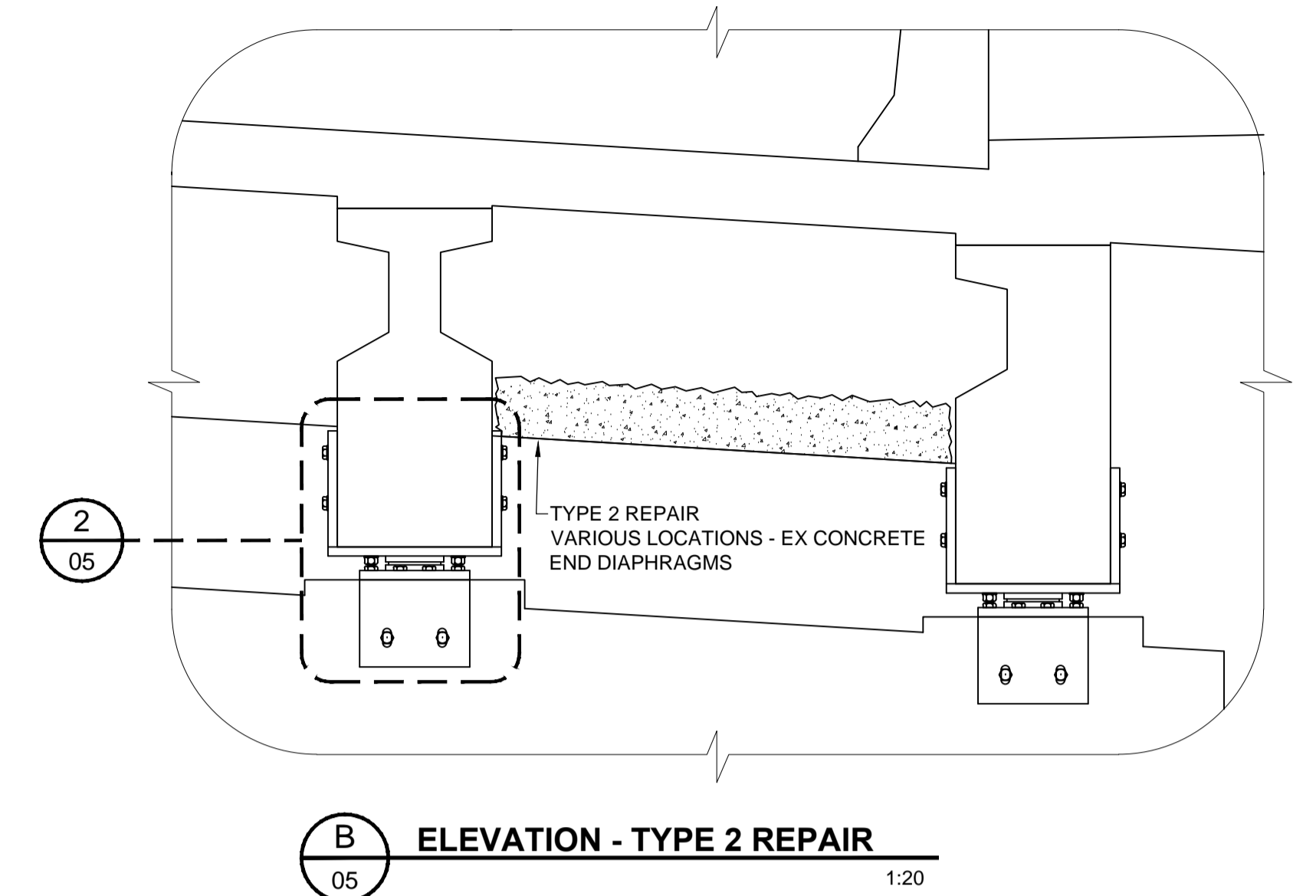


ELEVATION - TYPE 1 REPAIR & SECTION TYPE 2 REPAIR
 HALF SECTION OF PIER CAP SHOWN
 SIMILAR WORK OPPOSITE SIDE
 1:10



SECTION - TYPE 1 REPAIR
 1:10



ELEVATION - TYPE 2 REPAIR
 1:20

CONCRETE GIRDER AND END DIAPHRAGM REPAIR NOTES :

- CONTRACTOR TO SUBMIT CONCRETE GIRDER AND END DIAPHRAGM REPAIR PROCEDURE TO CONTRACT ADMINISTRATOR FOR REVIEW AND ACCEPTANCE PRIOR TO PERFORMING THE WORK.
- PERFORM TYPE 1 AND TYPE 2 REPAIRS AT LOCATIONS MARKED OUT BY THE CONTRACT ADMINISTRATOR IN THE FIELD.
- CONCRETE GIRDER AND END DIAPHRAGM REPAIR PROCEDURE - BASIS OF DESIGN :
 - PERFORM A 20mm DEEP SAWCUT AT REPAIR LIMITS TO LIMIT THE EXTENTS OF CONCRETE DEMOLITION.
 - REMOVE CONCRETE TO THE DEPTHS SHOWN.
 - SANDBLAST CONCRETE SURFACE AGAINST WHICH REPAIR MATERIAL SHALL BE PLACED TO STANDARD SSPC NO.6 COMMERCIAL BLAST CLEANING.
 - INSTALL STEEL REINFORCEMENT (TYPE 1 REPAIR ONLY).
 - COMPLETE CONCRETE REPAIR BY USE OF A CONCRETE REPAIR MATERIAL COMPATIBLE WITH THE CONCRETE SUBSTRATE AND THE CONTRACTOR'S METHOD OF PLACEMENT. THE CONTRACTOR MAY CHOOSE TO USE A PROPRIETARY REPAIR MORTAR SUBJECT TO THE REVIEW AND ACCEPTANCE OF THE CONTRACT ADMINISTRATOR.
 - MAINTAIN FORMS IN PLACE FOR A MINIMUM OF 3 DAYS.

BEARING REPAIR NOTES:

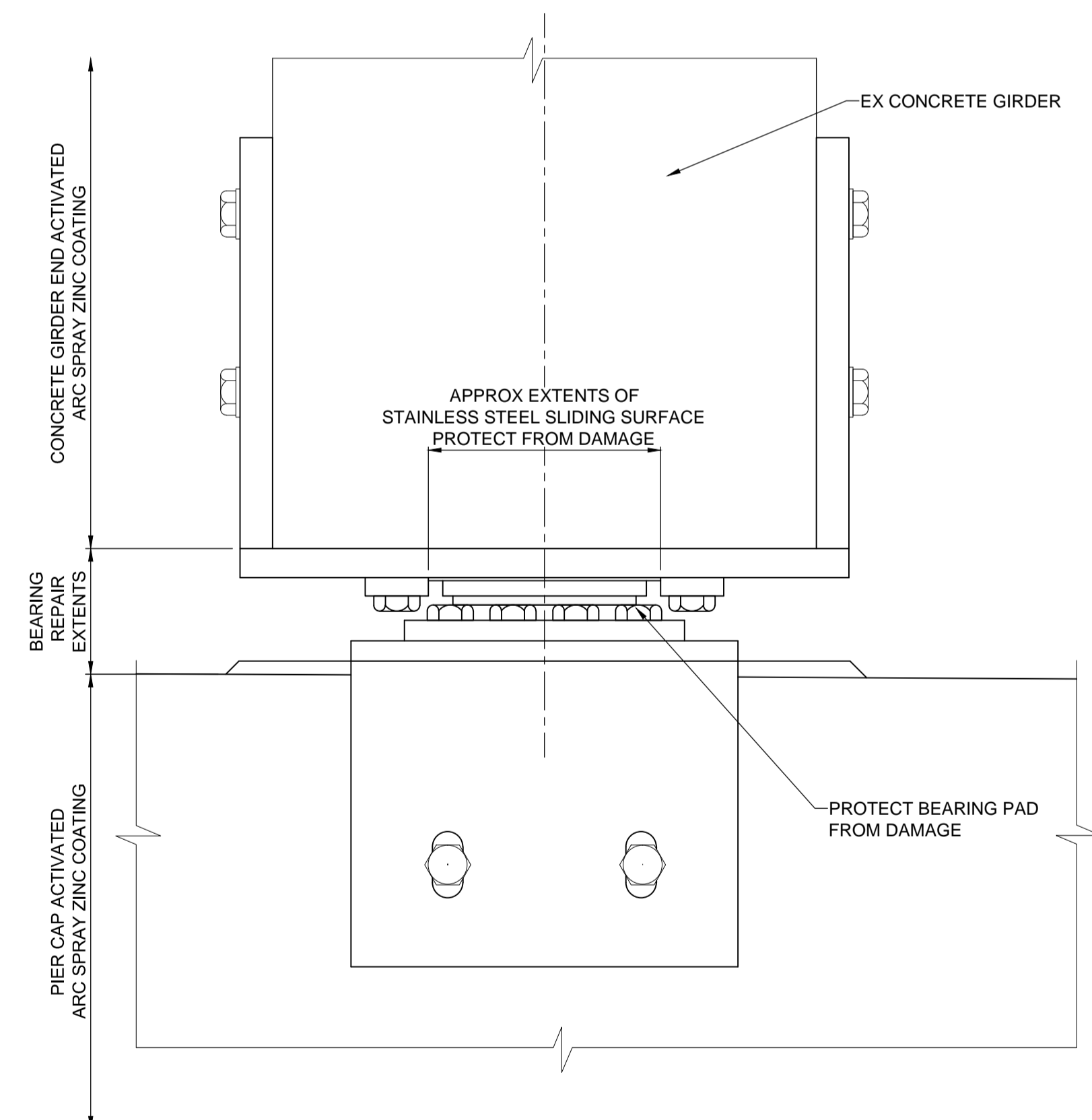
- CONTRACTOR TO SUBMIT BEARING REPAIR PROCEDURE TO CONTRACT ADMINISTRATOR FOR REVIEW AND ACCEPTANCE PRIOR TO PERFORMING THE WORK.
- BEARING REPAIR PROCEDURE - BASIS OF DESIGN:
 - TEMPORARILY PROTECT BEARING PAD AND SOLE PLATE STAINLESS STEEL SLIDING SURFACE BY USE OF MASTIC TAPE OR OTHER APPROPRIATE MEANS.
 - SANDBLAST EXPOSED STEEL SURFACES WITHIN BEARING REPAIR EXTENTS TO SSPC-SP 10/ NACE NO.2, NEAR-WHITE BLAST CLEANING.
 - METALLIZE EXPOSED STEEL SURFACES WITHIN BEARING REPAIR EXTENTS WITH 20 mil THICK LAYER OF ACTIVATED ARC SPRAY ZINC. TOUCH-UP DIFFICULT-TO-REACH SURFACES WITH 2 x 60 mil THICK COATS COLD-APPLIED ZINC PAINT INSTALLED ACCORDING TO MANUFACTURER'S INSTRUCTIONS.



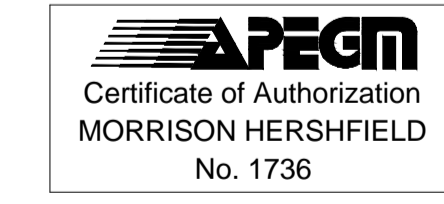
PHOTO - TYPICAL GUIDE BEARING EXISTING CONDITIONS



PHOTO - TYPICAL EXISTING CONDITIONS - TYPE 2 REPAIR LOCATION



2 DETAIL - BEARING REPAIR
 1:5
 TYPICAL AT 36 BEARINGS
 GUIDED EXPANSION BEARING SHOWN (16 TOTAL)
 FREE EXPANSION BEARING SIMILAR BUT WITHOUT GUIDES (20 TOTAL)



METRIC
 WHOLE NUMBERS INDICATE MILLIMETRES
 DECIMALIZED NUMBERS INDICATE METRES

LOCATION APPROVED UNDERGROUND STRUCTURES		BM ELEV
SUPR. U/G STRUCTURES COMMITTEE	DATE	
NOTE: LOCATION OF UNDERGROUND STRUCTURES AS SHOWN ARE BASED ON THE BEST INFORMATION AVAILABLE BUT NO GUARANTEE IS GIVEN THAT ALL EXISTING UTILITIES ARE SHOWN OR THAT THE GIVEN LOCATIONS ARE EXACT. CONFIRMATION OF EXISTENCE AND EXACT LOCATION OF ALL SERVICES MUST BE OBTAINED FROM THE INDIVIDUAL UTILITIES BEFORE PROCEEDING WITH CONSTRUCTION.		
C	ISSUED FOR TENDER	15/03/31 DAN
B	ISSUED FOR 99% PROGRESS	15/03/13 DAN
A	ISSUED FOR 50% PROGRESS	15/02/27 DAN
No.	REVISIONS	YYMMDDI BY

		DESIGNED BY DAN		CHECKED BY SAL	
		DRAWN BY EDM		APPROVED BY BE	
HOR. SCALE AS SHOWN		VERT. SCALE AS SHOWN		RELEASED FOR CONSTRUCTION	
DATE 15/02/27		DATE		DATE	

PROFESSIONAL'S SEAL
 ORIGINAL DRAWING
 SIGNED & SEALED BY:
 D. A. NEILSON
 APEGM MEMBER
 37248
 MARCH 31, 2015
 CONSULTANT DRAWING No.
 W140009-DET-02.dwg

BID OPPORTUNITY No. 202-2015

THE CITY OF WINNIPEG
PUBLIC WORKS DEPARTMENT
ENGINEERING DIVISION

NAIRN AVENUE OVERPASS
CONCRETE GIRDER AND PIER REPAIRS

PIER CAP, GIRDER & BEARING REPAIRS - SHEET 1

CITY DRAWING NUMBER B121-2015-05
SHEET 5 OF 7
DRAWING No. REV 05 C