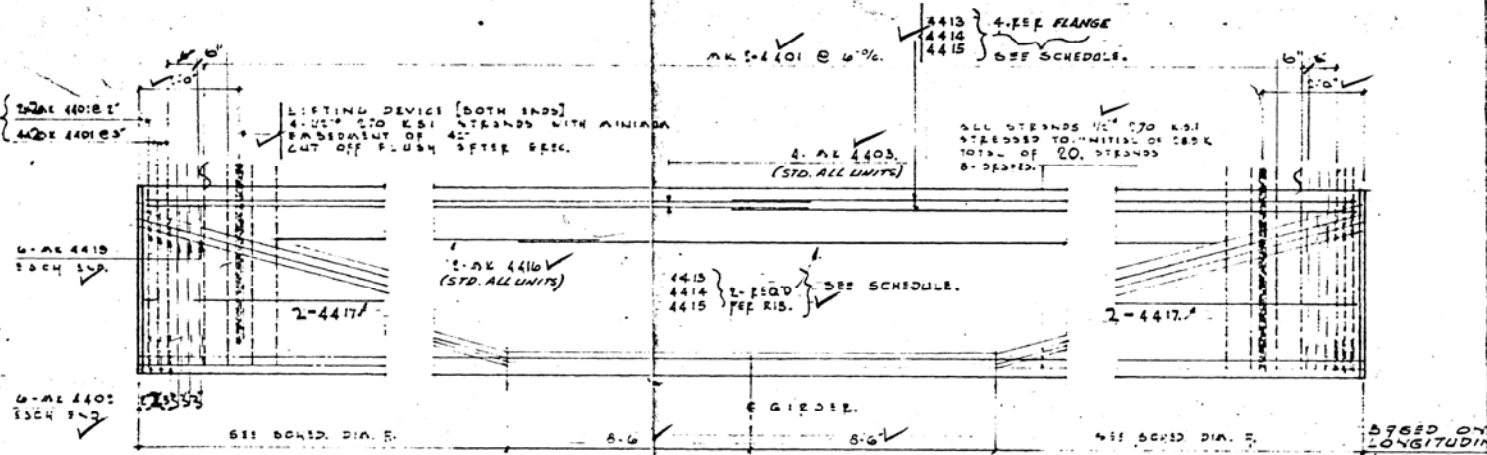
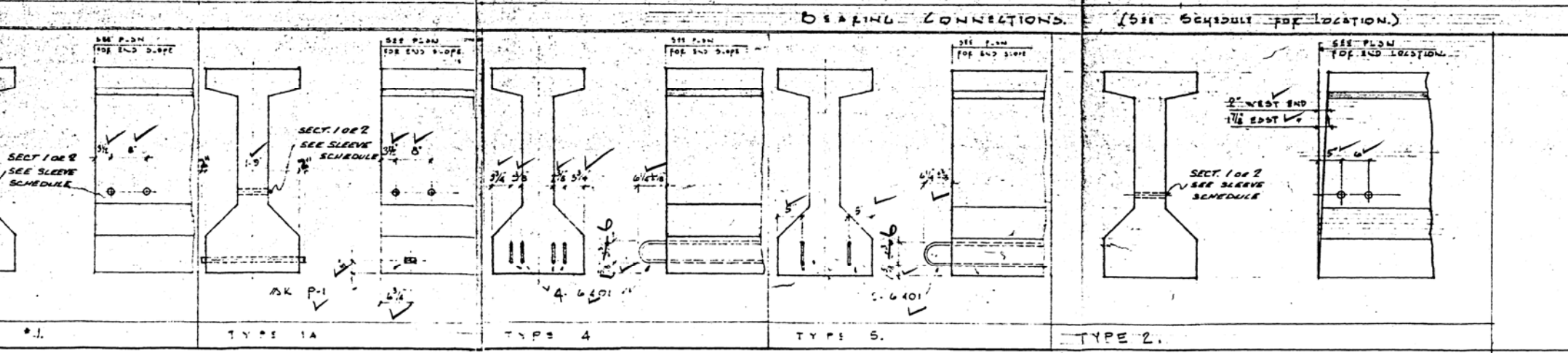
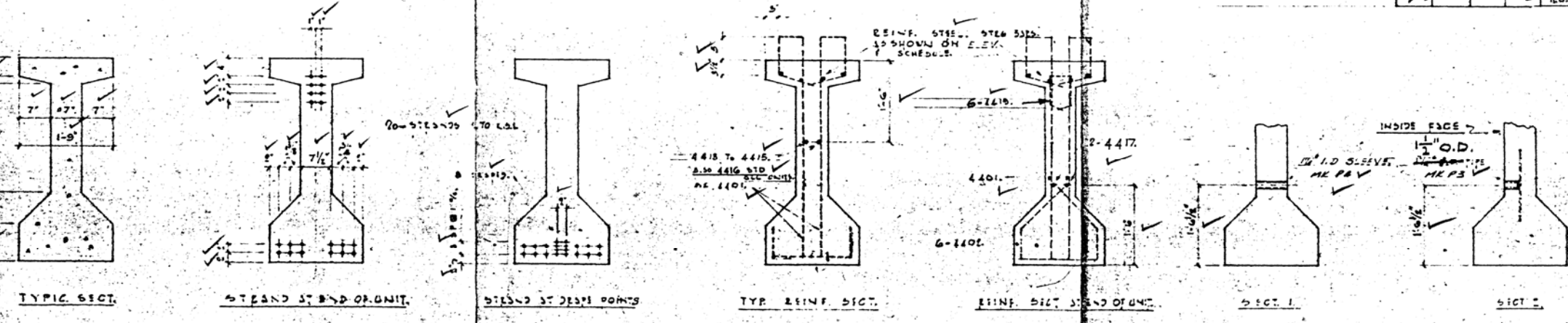


TYP. PLAN SECT. THROUGH RIS



BLOW-UP DETAIL



THESE BEAMS WERE STOPPED AT TOP FLANGE 1 ST. END.				NO. OF STRANDS	DIA.	SKEW	BEARING COND.	LOCATION	SLEEVES			
4415	4414	4413	EAST END						WEST END	MID SPAN	INSTR.	
1A	1	168-00	157-74	4	4	4	4	OUT	2			
1B	1	168-00	157-74	4	4	4	4	OUT	2			
1C	1	168-00	157-74	4	4	4	4	OUT	2			
1D	1	169-17	158-11	4	4	4	4	OUT	2			
1E	1	169-17	158-11	4	4	4	4	OUT	2			
1F	1	169-17	158-11	4	4	4	4	OUT	2			
1G	1	170-34	159-25	4	4	4	4	OUT	2			
1H	1	170-34	159-25	4	4	4	4	OUT	2			
1I	1	170-34	159-25	4	4	4	4	OUT	2			
1J	1	170-34	159-25	4	4	4	4	OUT	2			
1K	1	170-34	159-25	4	4	4	4	OUT	2			
1L	1	170-34	159-25	4	4	4	4	OUT	2			
1M	1	170-34	159-25	4	4	4	4	OUT	2			
1N	1	170-34	159-25	4	4	4	4	OUT	2			
1O	1	170-34	159-25	4	4	4	4	OUT	2			
1P	1	170-34	159-25	4	4	4	4	OUT	2			
1Q	1	170-34	159-25	4	4	4	4	OUT	2			
1R	1	170-34	159-25	4	4	4	4	OUT	2			
1S	1	170-34	159-25	4	4	4	4	OUT	2			
1T	1	170-34	159-25	4	4	4	4	OUT	2			
1U	1	170-34	159-25	4	4	4	4	OUT	2			
1V	1	170-34	159-25	4	4	4	4	OUT	2			
1W	1	170-34	159-25	4	4	4	4	OUT	2			
1X	1	170-34	159-25	4	4	4	4	OUT	2			
1Y	1	170-34	159-25	4	4	4	4	OUT	2			
1Z	1	170-34	159-25	4	4	4	4	OUT	2			
2A	1	168-00	157-74	4	4	4	4	OUT	2			
2B	1	168-00	157-74	4	4	4	4	OUT	2			
2C	1	168-00	157-74	4	4	4	4	OUT	2			
2D	1	168-00	157-74	4	4	4	4	OUT	2			
2E	1	168-00	157-74	4	4	4	4	OUT	2			
2F	1	168-00	157-74	4	4	4	4	OUT	2			
2G	1	168-00	157-74	4	4	4	4	OUT	2			
2H	1	168-00	157-74	4	4	4	4	OUT	2			
2I	1	168-00	157-74	4	4	4	4	OUT	2			
2J	1	168-00	157-74	4	4	4	4	OUT	2			
2K	1	168-00	157-74	4	4	4	4	OUT	2			
2L	1	168-00	157-74	4	4	4	4	OUT	2			
2M	1	168-00	157-74	4	4	4	4	OUT	2			
2N	1	168-00	157-74	4	4	4	4	OUT	2			
2O	1	168-00	157-74	4	4	4	4	OUT	2			
2P	1	168-00	157-74	4	4	4	4	OUT	2			
2Q	1	168-00	157-74	4	4	4	4	OUT	2			
2R	1	168-00	157-74	4	4	4	4	OUT	2			
2S	1	168-00	157-74	4	4	4	4	OUT	2			
2T	1	168-00	157-74	4	4	4	4	OUT	2			
2U	1	168-00	157-74	4	4	4	4	OUT	2			
2V	1	168-00	157-74	4	4	4	4	OUT	2			
2W	1	168-00	157-74	4	4	4	4	OUT	2			
2X	1	168-00	157-74	4	4	4	4	OUT	2			
2Y	1	168-00	157-74	4	4	4	4	OUT	2			
2Z	1	168-00	157-74	4	4	4	4	OUT	2			

UNDERWOOD McLELLAN & ASSOCIATES LIMITED  
 CONSULTING PROFESSIONAL ENGINEERS  
 1495 Pembina Highway  
 WINNIPEG 19,  
 Manitoba

Project No. \_\_\_\_\_  
 Checked By: RY Approved: \_\_\_\_\_  
 Date Checked: 19/5/67 Approved as Noted: \_\_\_\_\_  
 NOT APPROVED  
 RESUBMIT  
 Date Returned: 19/5/67

This approval applies to general arrangements and design, but not to figured dimensions and details of construction, and is subject to change as noted. The Contractor is not relieved of his responsibility to comply with the relevant plans and specifications for the work.

CONCRETE STRENGTH IS TO BE 5000 P.S.I. AT 28 DAYS.

FOR REINF. STEEL SCHEDULE 1 DETAILS REFER TO DWG No. 15-165-42-59 UNDERWOOD ACTION No. 355, ENCL.

No.	PARTICULARS	DATE	BY
REVISIONS (READ UP)			

**PRECO**  
 DIVISION OF B.A.C.M.

JOB TITLE:  
 NORTH AV. BRIDGE DEFORMATION  
 METROPOLITAN CORP. OF GREATER WPG.

SHEET TITLE:  
 70'-0" SPAN - BEAM DETAILS.

ARCHITECTS OF ENGINEERS: Underwood Mclellan & Associates  
 CONTRACTOR: Peter Leitch Const.

DATE	DRAWN BY	SCALE	DWG. No.	JOB No.
19/5/67	RY	AS SHOWN	2	67