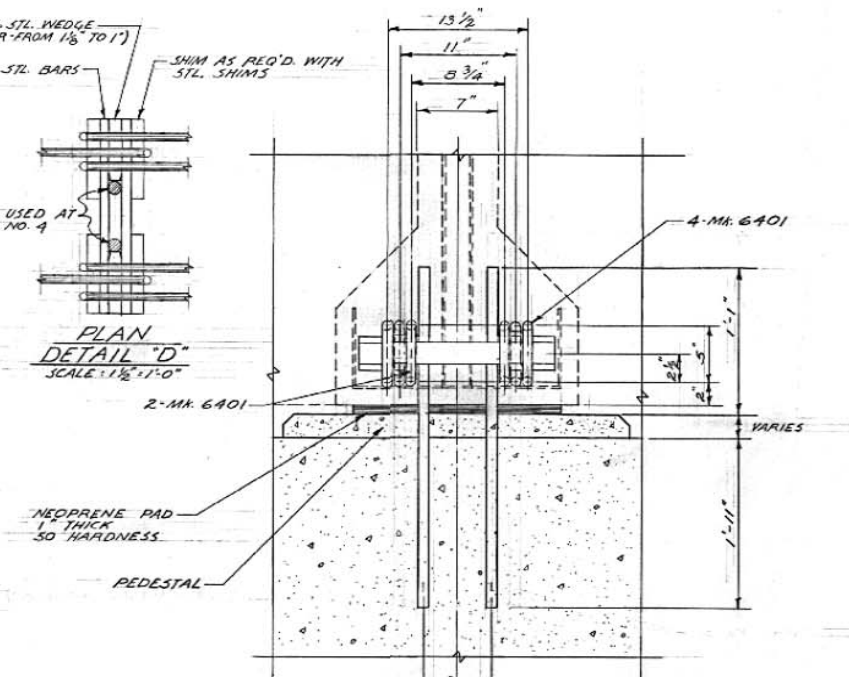
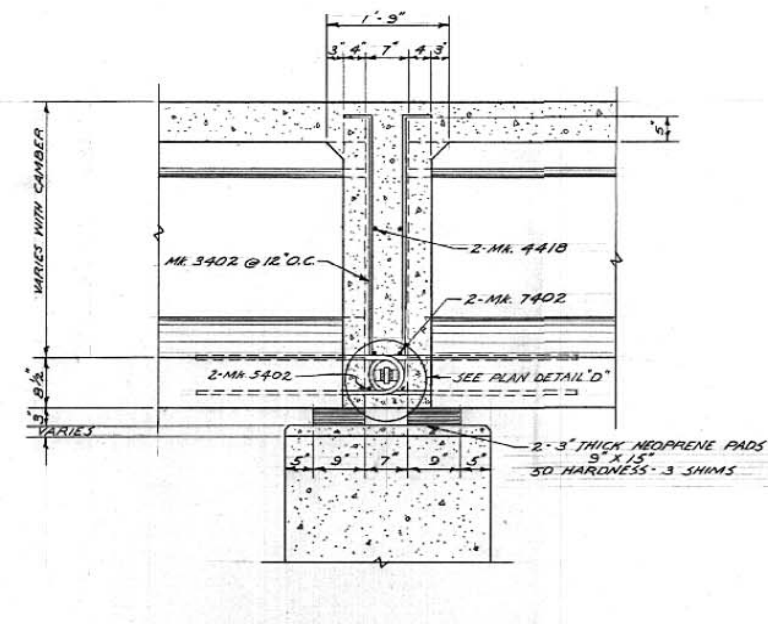


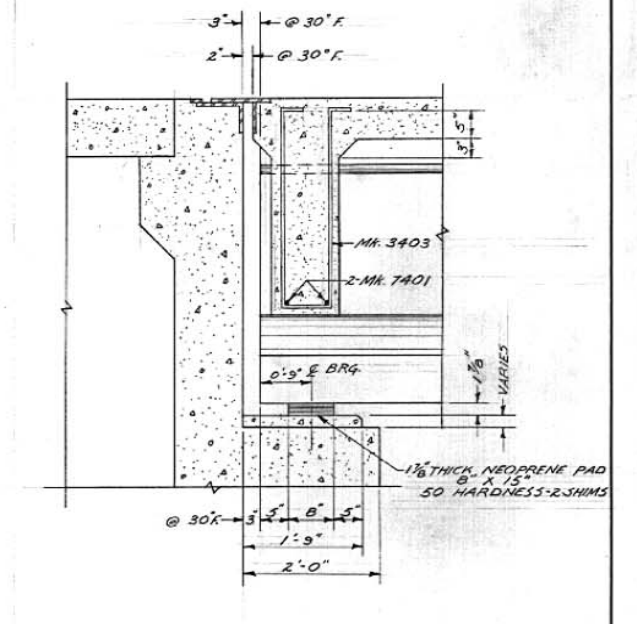
TYPICAL CROSS-SECTION AT PIERS 1, 2, 5, 7, 9 AND 10
SCALE: 3/4" = 1'-0"



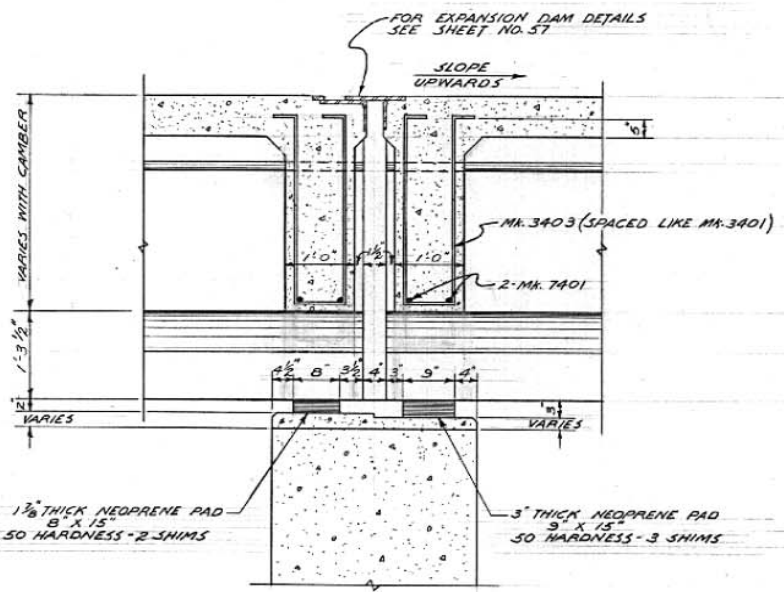
SECTION X-X
SCALE: 1 1/2" = 1'-0"



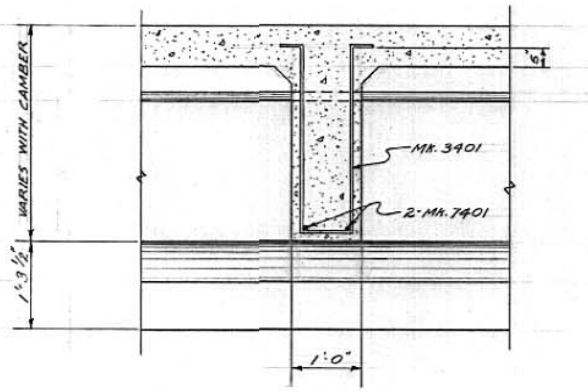
TYPICAL CROSS-SECTION AT PIER 4
SCALE: 3/4" = 1'-0"



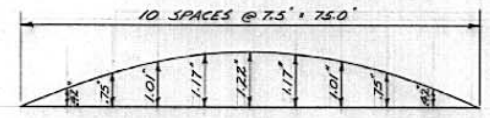
TYPICAL CROSS-SECTION AT ABUT.
SCALE: 3/4" = 1'-0"



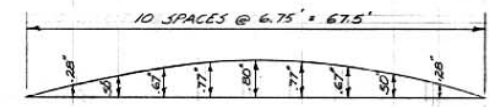
TYPICAL CROSS-SECTION AT EXPANSION DAM-PIERS 3 & 8
SCALE: 3/4" = 1'-0"



TYPICAL CROSS-SECTION OF INTERMEDIATE DIAPHRAGM
SCALE: 3/4" = 1'-0"



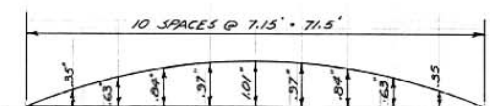
75.0 FT. GIRDERS



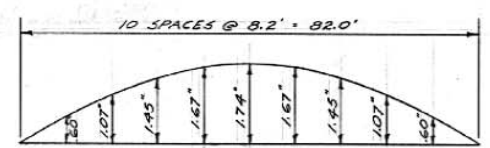
67.5 FT. GIRDERS



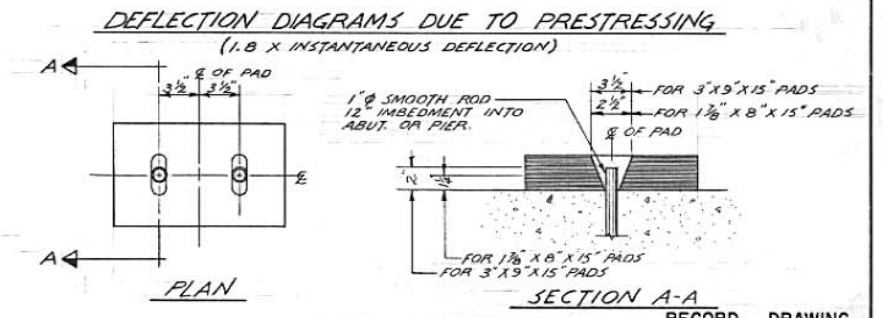
78.5 FT. GIRDERS



71.5 FT. GIRDERS

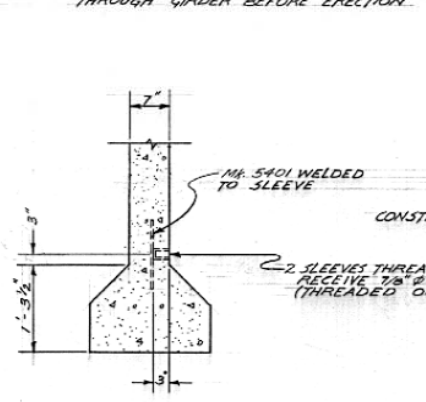


82.0 FT. GIRDERS

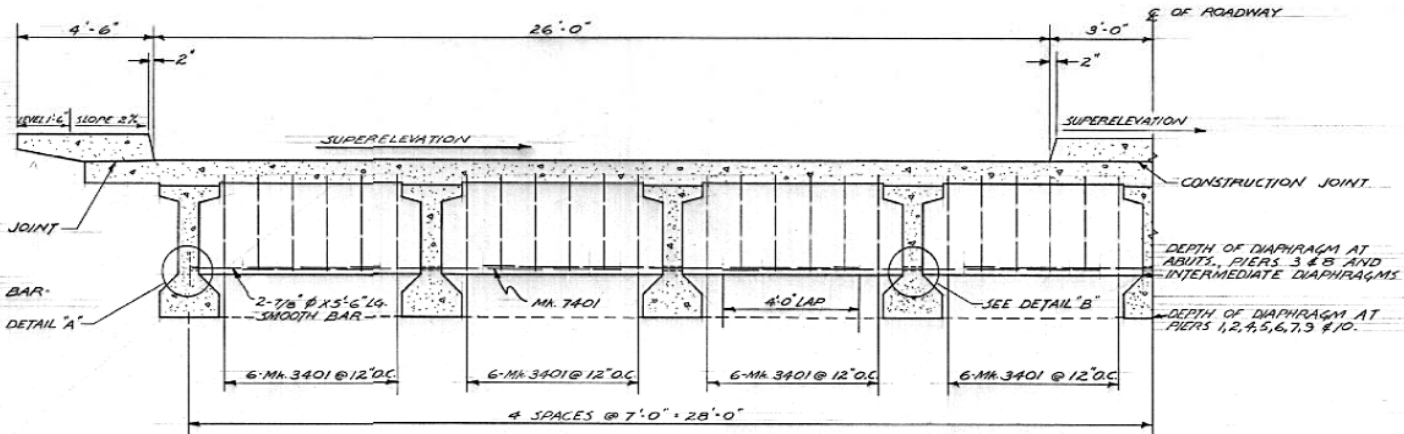


DEFLECTION DIAGRAMS DUE TO PRESTRESSING (I.B X INSTANTANEOUS DEFLECTION)

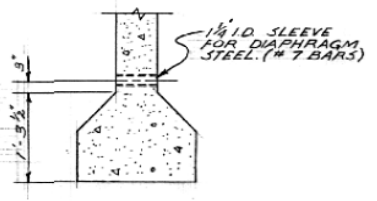
NOTE: BOTTOM BARS IN DIAPHRAGM TO BE THREADED THROUGH GIRDER BEFORE ERECTION.



DETAIL A
SCALE: 3/4" = 1'-0"



TYPICAL CROSS-SECTION OF 70 & 80 FT. SPANS
SCALE: 3/8" = 1'-0"



DETAIL B
SCALE: 3/4" = 1'-0"

RECORD DRAWING	
NO. 1	REVISED TYPICAL CROSS SECTION-PIERS 3 & 8
NO.	REVISIONS
DATE	BY
AUG 3/67 PBF	
THE METROPOLITAN CORPORATION OF GREATER WINNIPEG STREETS AND TRANSIT DIVISION	
NAIRN AVENUE GRADE SEPARATION	
BEARING PAD & DIAPHRAGM DETAILS	
APPROVED BY	DATE
ENGINEER OF STREETS AND TRAFFIC	16/3/67
UNDERWOOD McLELLAN & ASSOCIATES LTD. CONSULTING PROFESSIONAL ENGINEERS	
DESIGNED BY	DATE
PBF	FEB. 1967
DRAWN BY	DATE
KWF	FEB. 1967
CHECKED BY	DATE
PBF	FEB. 1967
APPROVED BY	DATE
[Signature]	FEB. 1967
SCALE:	
HORIZ. AS SHOWN	
VERT. AS SHOWN	
B-5045	
DRAWING NO. AB	
25-265-42-53	

