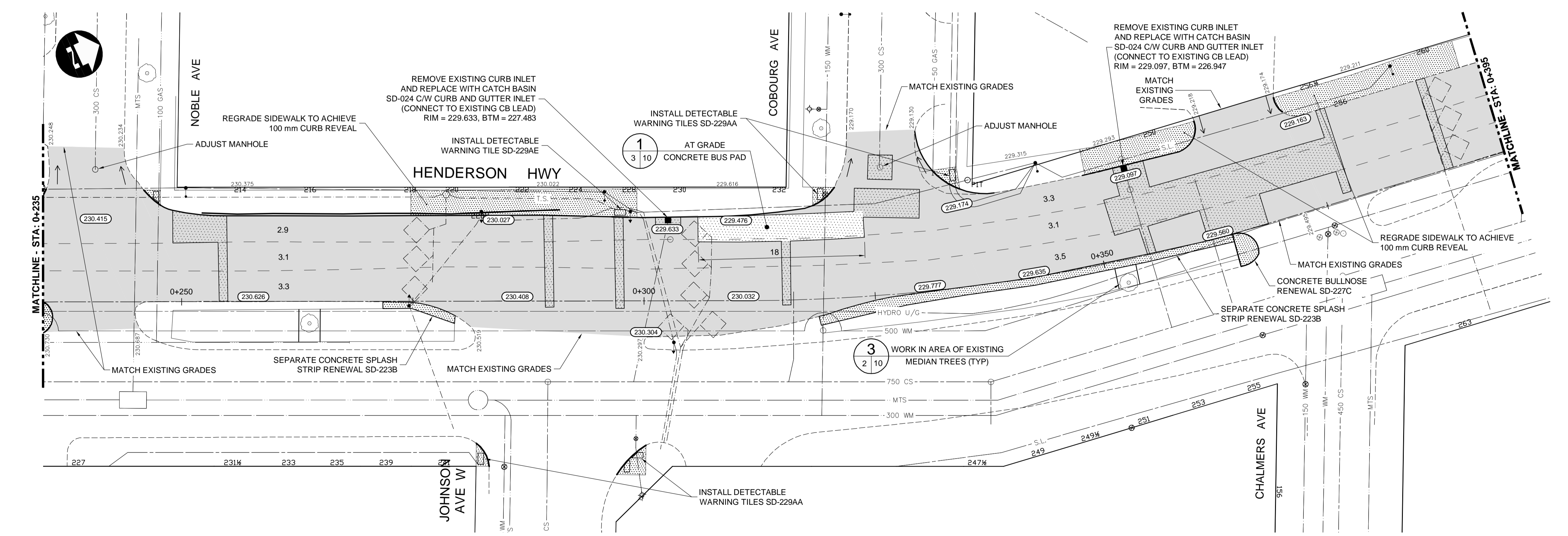


- CONSTRUCTION NOTES:**
- ALL DIMENSIONS ARE TO FACE OF CURB.
 - ISOLATED MISCELLANEOUS ITEMS IN NEW CONCRETE WORKS AS PER SD-228C.
 - LEGAL PLAN AND UNDERGROUND INFORMATION FROM CITY OF WINNIPEG LBIS. CONTRACTOR TO VERIFY ALL UNDERGROUNDS IN THE FIELD.
 - CONTRACTOR TO TAKE PRECAUTIONARY STEPS TO AVOID DAMAGE FROM CONSTRUCTION ACTIVITIES TO TREES WITHIN THE LIMITS OF CONSTRUCTION.
 - LOCATION OF EXISTING SERVICES TO BE CONFIRMED IN THE FIELD BY THE CONTRACTOR.
 - CB LEADS TO BE INSTALLED AT MIN. 1.0% SLOPE OR AS DIRECTED BY CONTRACT ADMINISTRATOR.
 - LIMITS OF SIDEWALK RENEWAL TO BE FINALIZED IN THE FIELD BY THE CONTRACT ADMINISTRATOR.
 - LIMITS OF BOULEVARD GRADING TO BE FINALIZED IN THE FIELD BY THE CONTRACT ADMINISTRATOR.
 - LIMITS OF CURB REPLACEMENT AND SPLASH STRIP REPLACEMENT TO BE FINALIZED IN THE FIELD BY THE CONTRACT ADMINISTRATOR.
 - JOINT, SLAB, CURB AND SIDEWALK REPAIRS TO BE MARKED OUT IN THE FIELD BY THE CONTRACT ADMINISTRATOR.
 - CONTRACTOR RESPONSIBLE FOR ALL BARRICADES AND SIGNAGE EXCEPT FOR REGULATORY (EG. NO LEFT TURNS) SUPPLIED BY TRAFFIC SERVICES BRANCH.



METRIC
WHOLE NUMBERS INDICATE MILLIMETRES
DECIMAL NUMBERS INDICATE METRES

WARNING
IF POWER EQUIPMENT OR EXPLOSIVES USED FOR EXCAVATION ON THIS PROJECT THE CONTRACTOR:

- NOTIFIED THE GAS COMPANY OF THE PROPOSED LOCATION OF EXCAVATION.
- TOOK PRECAUTION TO AVOID DAMAGE TO GAS COMPANY INSTALLATIONS SEE PROVINCIAL REGULATION 210/72 FOR DETAILS.
- OBTAINED EXCAVATION PERMITS PRIOR TO CONSTRUCTION.



THE CITY OF WINNIPEG
PUBLIC WORKS DEPARTMENT

HENDERSON HIGHWAY

PLAN-PROFILE - STA. 0+235 TO 0+395

CITY DRAWING NUMBER: P-3466-02
SHEET OF: 02 OF 10
CONSULTANT DRAWING NUMBER

EXISTING	LEGEND-PLAN	PROPOSED	EXISTING	LEGEND-PLAN	PROPOSED	EXISTING	LEGEND-PROFILE	PROPOSED
150 WM	WATERMAIN	150 WM	HYDRO	HYDRO	HYDRO	150 WM	WATERMAIN	150 WM
300 LDS	HYDRANT VALVE	300 LDS	MTS	M.T.S.	MTS	300 LDS	HYDRANT VALVE	300 LDS
250 WWS	LAND DRAINAGE SEWER	300 LDS		CONCRETE		250 WWS	LAND DRAINAGE SEWER	300 LDS
	WASTE WATER SEWER	250 WWS		ASPHALT			WASTE WATER SEWER	250 WWS
	MANHOLE			PLANING			PLANING	
	CATCH BASIN			SIDEWALK			SIDEWALK	
	CURB INLET			PAVING STONES			NORTH/WEST GUTTER	
	JUNCTIONS			PARTIAL DEPTH REPAIR			SOUTH/EAST GUTTER	
	CULVERT			PROPERTY LINE			NORTH/WEST DITCH	
100 GAS	GAS	100 GAS		DRAINAGE ARROW			SOUTH/EAST DITCH	
				CURB RAMP				

UNDERGROUND STRUCTURES

SUPPLY	U/G STRUCTURES	DATE
2	ISSUED FOR TENDER	04/27/15 TJP
1	ISSUED FOR REVIEW	04/06/15 TJP
NO.	REVISIONS	DATE BY

LOCATION OF UNDERGROUND STRUCTURES AS SHOWN ARE BASED ON THE BEST INFORMATION AVAILABLE BUT NO GUARANTEE IS GIVEN THAT ALL EXISTING UTILITIES ARE SHOWN OR THAT THE GIVEN LOCATIONS ARE EXACT. CONFIRMATION OF EXISTENCE AND EXACT LOCATION OF ALL SERVICES MUST BE OBTAINED FROM THE INDIVIDUAL UTILITIES BEFORE PROCEEDING WITH CONSTRUCTION.

DESIGNED BY	AMC
DRAWN BY	TJH
CHECKED BY	ORIGINAL SIGNED BY TARAN J. PETERS
APPROVED BY	ORIGINAL SIGNED BY DAVE P. KRAHN
HOR. SCALE	1:250
VERTICAL	1:10
RELEASED FOR CONSTRUCTION	ORIGINAL SIGNED BY BONNIE KONZELMAN
DATE	04/27/2015

DILLON CONSULTING

PROVINCE OF MANITOBA
REGISTERED PROFESSIONAL ENGINEER
T.J. PETERS
04/27/2015
Member 22309

CONSULTANT PROJECT NUMBER: 14-1333

G:\CAD\141333\Drawings and Figures\Contract\141333-02-COON-Plan-Profile.dwg