

- REFERENCE NOTES**
- A. PAVEMENT DIMENSIONS ARE TO BACK OF CURB
  - B. BASELINE IS CENTRE LINE RIGHT-OF-WAY
  - C. PROPERTY LINES OBTAINED FROM CITY OF WINNIPEG L.B.I.S., AND NO SCALE FACTOR WAS APPLIED
  - D. REFER TO AECOM FIELD BOOK NO. 4853

- CONSTRUCTION NOTES**
1. REMOVE EXISTING CONCRETE PAVEMENT AND CONSTRUCT NEW ASPHALTIC PAVEMENT TYPE1A (100mm)
  2. REMOVE EXISTING FRAME AND COVER AND INSTALL NEW FRAME AND COVER (AP-005 AND AP-004)
  3. ADJUST EXISTING MANHOLE/CATCH BASIN TO GRADE
  4. INSTALL NEW CAST IRON RISER RING
  5. CONSTRUCT NEW BARRIER CURB AND GUTTER (180mm HT.)
  6. ADJUST EXISTING WATER VALVE TO GRADE
  7. ADJUST EXISTING CURB STOP
  8. RENEW EXISTING 100mm CONCRETE SIDEWALK
  9. REMOVE EXISTING CATCHBASIN, CATCH PIT AND ABANDON LEAD
  10. INSTALL NEW CURB AND GUTTER INLET c/w CATCHBASIN (SD-024) AND CONNECT TO EXISTING 375mm COMBINED SEWER
  11. INSTALL 150mm SUBDRAIN 6.0m EACH SIDE OF CATCH BASIN.



**METRIC**  
WHOLE NUMBERS INDICATE MILLIMETRES  
DECIMALIZED NUMBERS INDICATE METRES

|              |                     |              |                   |          |                        |
|--------------|---------------------|--------------|-------------------|----------|------------------------|
| 150 mm W.M.  | WATERMAIN           | 150 mm W.M.  | HYDRO             | — x —    | LOCATION APPROVED      |
| 300mm L.D.S. | VALVE               | 300mm L.D.S. | M.T.S.            | — □ —    | UNDERGROUND STRUCTURES |
| 250mm W.W.S. | LAND DRAINAGE SEWER | 250mm W.W.S. | CONCRETE          | — ○ —    |                        |
|              | WASTEWATER SEWER    |              | ASPHALT           | — ◇ —    |                        |
|              | MANHOLE             |              | PROPERTY LINE     | — ○ —    |                        |
|              | CATCH BASIN         |              | SURVEY BAR        | — ○ —    |                        |
|              | CATCH PIT           |              | ELEVATION         | — ○ —    |                        |
|              | JUNCTIONS           |              | TREE              | — ○ —    |                        |
|              | CULVERT             |              | SIDEWALK RAMP     | — ○ —    |                        |
|              | GAS                 |              | CONCRETE SIDEWALK | — ○ —    |                        |
| EXISTING     | LEGEND - PLAN       | PROPOSED     | LEGEND - PLAN     | PROPOSED | EXISTING               |
|              |                     |              |                   |          | LEGEND - PROFILE       |
|              |                     |              |                   |          | PROPOSED               |

**LOCATION APPROVED UNDERGROUND STRUCTURES**

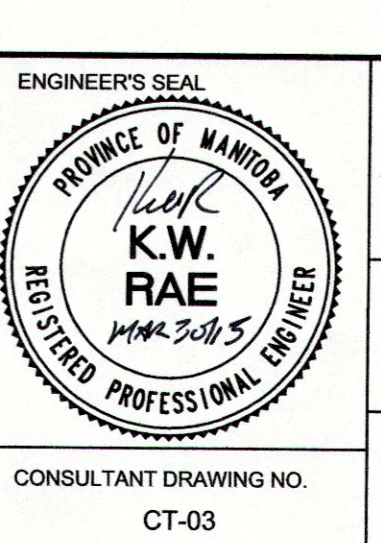
SUPV. U/G STRUCTURES COMMITTEE DATE

**NOTE:**  
LOCATION OF UNDERGROUND STRUCTURES AS SHOWN ARE BASED ON THE BEST INFORMATION AVAILABLE, BUT NO GUARANTEE IS GIVEN THAT ALL EXISTING UTILITIES ARE SHOWN OR THAT THE GIVEN LOCATIONS ARE EXACT. CONFIRMATION OF EXISTENCE AND EXACT LOCATION OF ALL SERVICES MUST BE OBTAINED FROM THE INDIVIDUAL UTILITIES BEFORE PROCEEDING WITH CONSTRUCTION.

|                   |   |
|-------------------|---|
| B.M. 14-49        | Wall St. E., S of Notre Dame Ave., Tble. on top of N.E. Conc. foundation No. 1577 Wall St. E. (the Winnipeg School Division No. 1 Administration Bldg.) |
| ELEV. 232.871     |   |
| DESIGNED BY       | BC/SS   |
| CHECKED BY        | KWR   |
| DRAWN BY          | PB/RT   |
| APPROVED BY       |   |
| ISSUED FOR TENDER | 03/31/2015 BC   |
| ISSUED FOR REVIEW | 03/23/2015 BC   |
| NO. REVISIONS     | DATE BY   |

**AECOM**

DESIGNED BY: BC/SS  
CHECKED BY: KWR  
DRAWN BY: PB/RT  
APPROVED BY: [Signature]  
HOR. SCALE: 1:250  
VERTICAL: 1:10  
RELEASED FOR CONSTRUCTION BY: [Signature]  
DATE: MARCH 1, 2015



**THE CITY OF WINNIPEG**  
PUBLIC WORKS DEPARTMENT  
ENGINEERING DIVISION

2015 LOCAL STREET RENEWAL PROGRAM  
DOWNING STREET: YARWOOD AVENUE TO NOTRE DAME AVENUE  
ASPHALT RECONSTRUCTION  
STATION 0+270 TO STATION 0+400

CITY DRAWING NUMBER  
SHEET 03 OF 12

CONSULTANT DRAWING NO. CT-03