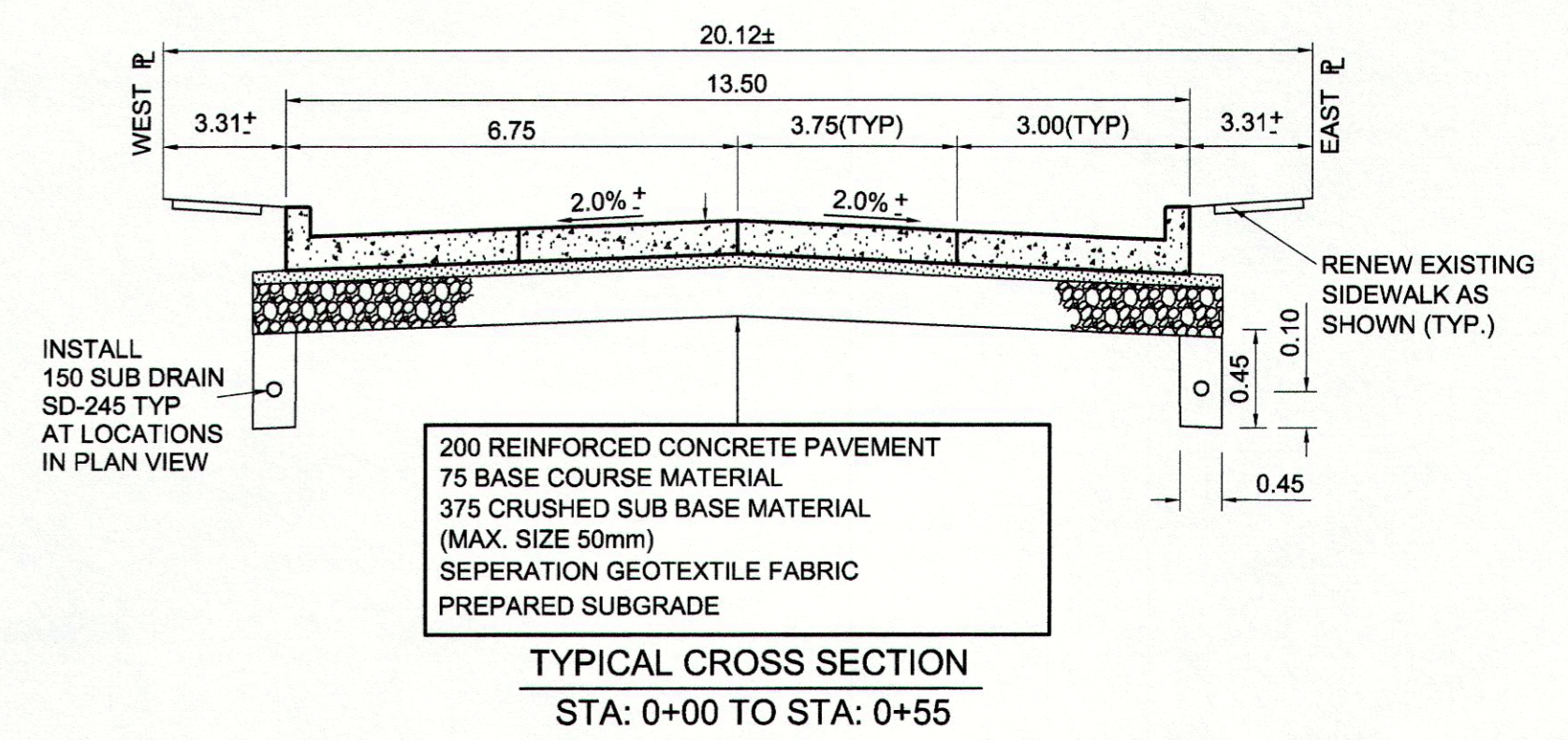
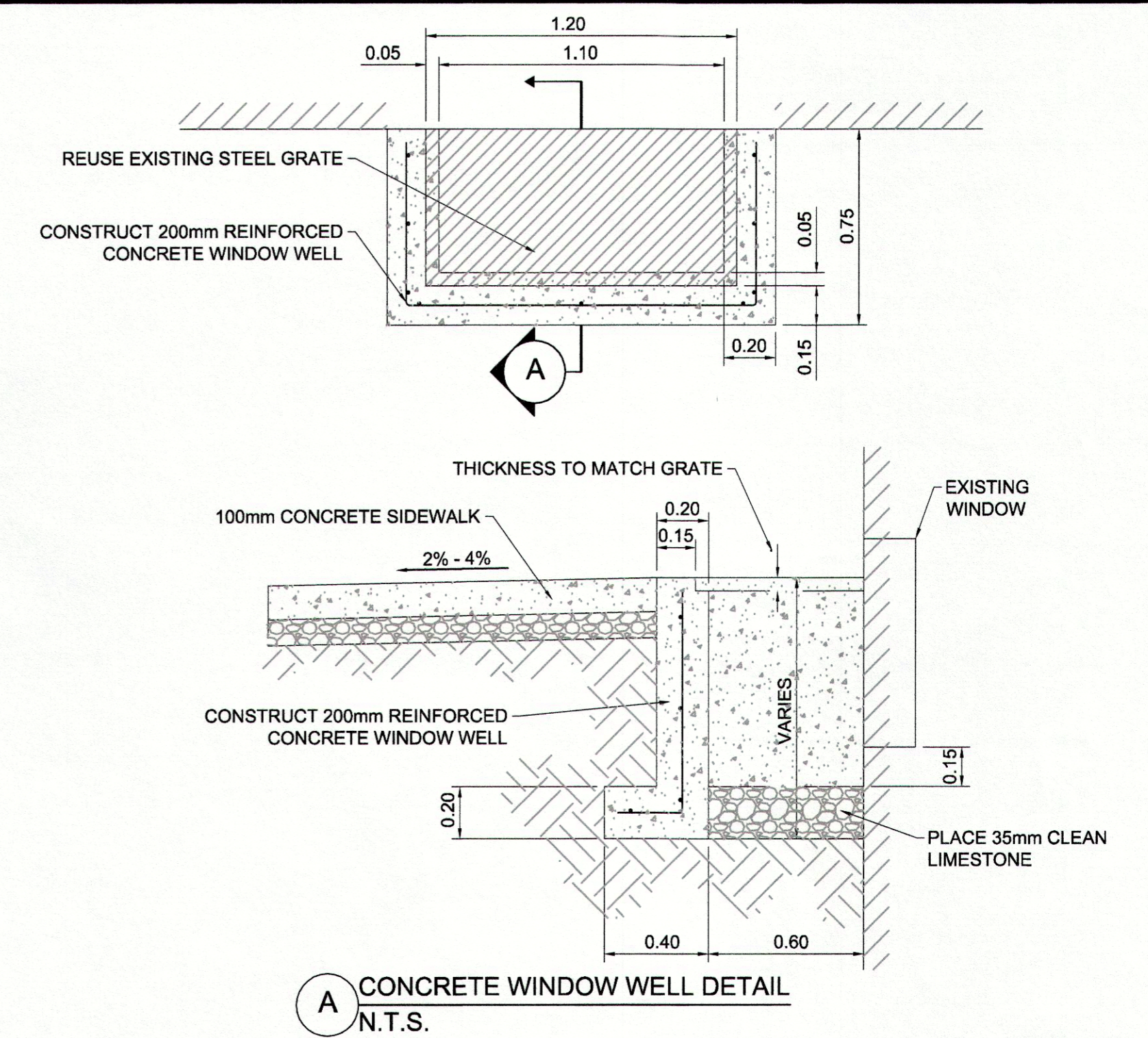
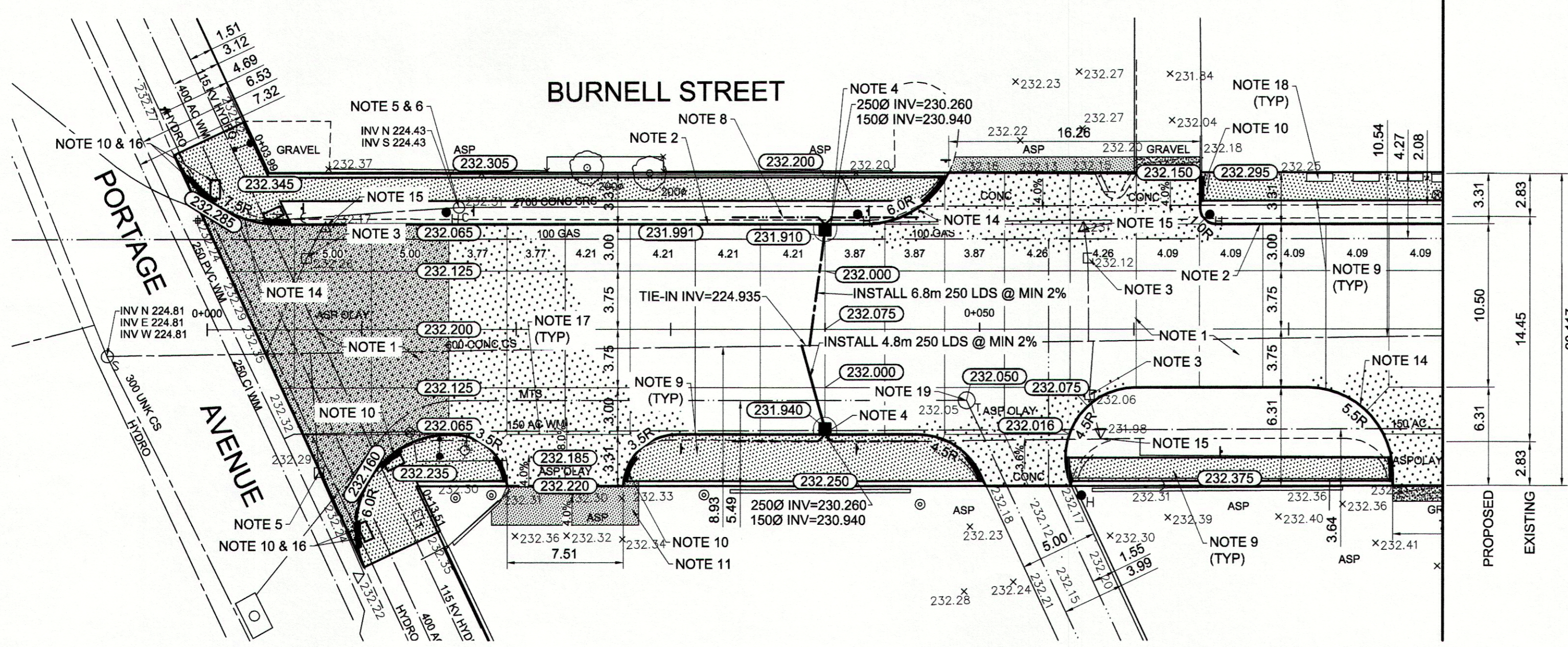


MATCHLINE STATION 0+080



- REFERENCE NOTES**
- PAVEMENT DIMENSIONS ARE TO BACK OF CURB
  - BASELINE IS CENTRE LINE RIGHT-OF-WAY
  - PROPERTY LINES OBTAINED FROM CITY OF WINNIPEG L.B.I.S., AND NO SCALE FACTOR WAS APPLIED
  - REFER TO AECOM FIELD BOOK NO. 4852

- CONSTRUCTION NOTES**
- REMOVE EXISTING CONCRETE PAVEMENT AND CONSTRUCT NEW 200mm REINFORCED CONCRETE PAVEMENT C/W 19mm DOWELS AT TRANSVERSE JOINTS
  - CONSTRUCT NEW BARRIER CURB (180mm HT. SEPARATE)
  - REMOVE EXISTING CATCHBASIN AND PLUG EXISTING LEAD
  - INSTALL NEW CURB AND GUTTER INLET c/w CATCH BASIN (SD-024) AND CONNECT NEW 250mm LEAD TO EXISTING 600CS
  - REMOVE EXISTING FRAME AND COVER AND PLACE NEW FRAME AND SOLID COVER (AP-004/AP-005)
  - ADJUST EXISTING MANHOLE TO GRADE
  - INSTALL NEW CAST IRON RING
  - INSTALL 150mm SUBDRAIN 6m ON EACH SIDE OF CATCHBASIN
  - RENEW EXISTING 100mm CONCRETE SIDEWALK
  - INSTALL NEW CURB RAMP (10mm HT. INTEGRAL)
  - REMOVE EXISTING ASPHALTIC PAVEMENT AND CONSTRUCT NEW ASPHALTIC PAVEMENT TYPE 1A
  - ADJUST EXISTING WATER VALVE TO GRADE
  - ADJUST EXISTING CURB STOP TO GRADE
  - CONSTRUCT NEW MODIFIED BARRIER CURB (180mm HT. INTEGRAL)
  - REMOVE EXISTING CATCHPIT AND CURB AND GUTTER INLET AND PLUG EXISTING LEAD
  - INSTALL DETECTABLE WARNING SURFACE TILE
  - CONSTRUCT NEW LIP CURB (40mm HT. INTEGRAL)
  - CONSTRUCT NEW REINFORCED CONCRETE WINDOW WELL (REFER TO DETAIL)
  - REMOVE EXISTING MTS MANHOLE FRAME AND COVER AND INSTALL NEW MTS MANHOLE FRAME AND COVER



**METRIC**  
WHOLE NUMBERS INDICATE MILLIMETRES  
DECIMALIZED NUMBERS INDICATE METRES

150 mm W.M.	WATERMAIN	150 mm W.M.	HYDRO	— — — — —	— — — — —	— — — — —	— — — — —	— — — — —
Hydrant symbol	HYDRANT	Hydrant symbol	M.T.S.	— — — — —	— — — — —	— — — — —	— — — — —	— — — — —
Valve symbol	VALVE	Valve symbol	CONCRETE	— — — — —	— — — — —	— — — — —	— — — — —	— — — — —
300mm L.D.S.	LAND DRAINAGE SEWER	300mm L.D.S.	ASPHALT	— — — — —	— — — — —	— — — — —	— — — — —	— — — — —
250mm W.W.S.	WASTEWATER SEWER	250mm W.W.S.	PROPERTY LINE	— — — — —	— — — — —	— — — — —	— — — — —	— — — — —
Manhole symbol	MANHOLE	Manhole symbol	SURVEY BAR	— — — — —	— — — — —	— — — — —	— — — — —	— — — — —
Catch basin symbol	CATCH BASIN	Catch basin symbol	ELEVATION	— — — — —	— — — — —	— — — — —	— — — — —	— — — — —
Catch pit symbol	CATCH PIT	Catch pit symbol	TREE	— — — — —	— — — — —	— — — — —	— — — — —	— — — — —
Junctions symbol	JUNCTIONS	Junctions symbol	SIDEWALK RAMP	— — — — —	— — — — —	— — — — —	— — — — —	— — — — —
Culvert symbol	CULVERT	Culvert symbol	CONCRETE SIDEWALK	— — — — —	— — — — —	— — — — —	— — — — —	— — — — —
Gas symbol	GAS	Gas symbol	FENCE	— — — — —	— — — — —	— — — — —	— — — — —	— — — — —
Existing symbol	LEGEND - PLAN	Proposed symbol	LEGEND - PLAN	Proposed symbol	Existing symbol	LEGEND - PROFILE	Proposed symbol	Existing symbol

**LOCATION APPROVED UNDERGROUND STRUCTURES**

SUPV. U/G STRUCTURES COMMITTEE DATE

**NOTE:**  
LOCATION OF UNDERGROUND STRUCTURES AS SHOWN ARE BASED ON THE BEST INFORMATION AVAILABLE, BUT NO GUARANTEE IS GIVEN THAT ALL EXISTING UTILITIES ARE SHOWN OR THAT THE GIVEN LOCATIONS ARE EXACT. CONFIRMATION OF EXISTENCE AND EXACT LOCATION OF ALL SERVICES MUST BE OBTAINED FROM THE INDIVIDUAL UTILITIES BEFORE PROCEEDING WITH CONSTRUCTION.

B.M. 14-91	ELEV. 232.305	S.W. Cor. Portage Ave. & Lenore St. 100' on 100' of 0.05 m dia. x 2.4 m iron pipe, 2.4 m E. of E. wall & on line of most N.W. No. 830 Portage Ave. or 2.6m E. of W.L. Lenore St. along the S.L. of Portage Ave. produced from the W.	
0	ISSUED FOR TENDER	03/31/2015	BC
A	ISSUED FOR REVIEW	03/23/2015	BC
NO.	REVISIONS	DATE	BY

**AECOM**

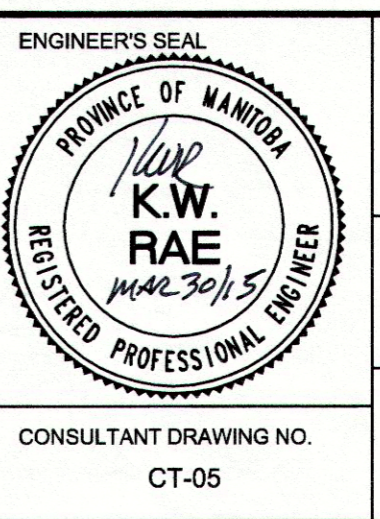
DESIGNED BY: BC/SS  
CHECKED BY: KWR

DRAWN BY: PB/RT  
APPROVED BY:

HOR. SCALE: 1:250  
VERTICAL: 1:10

RELEASSED FOR CONSTRUCTION BY:

DATE: MARCH 31, 2015



**THE CITY OF WINNIPEG**  
PUBLIC WORKS DEPARTMENT  
ENGINEERING DIVISION

2015 LOCAL STREET RENEWAL PROGRAM

BURNELL STREET: PORTAGE AVENUE TO ST PAUL AVENUE  
CONCRETE RECONSTRUCTION  
PORTAGE AVENUE TO STATION 0+080

CITY DRAWING NUMBER: SHEET 05 OF 12

CONSULTANT DRAWING NO. CT-05