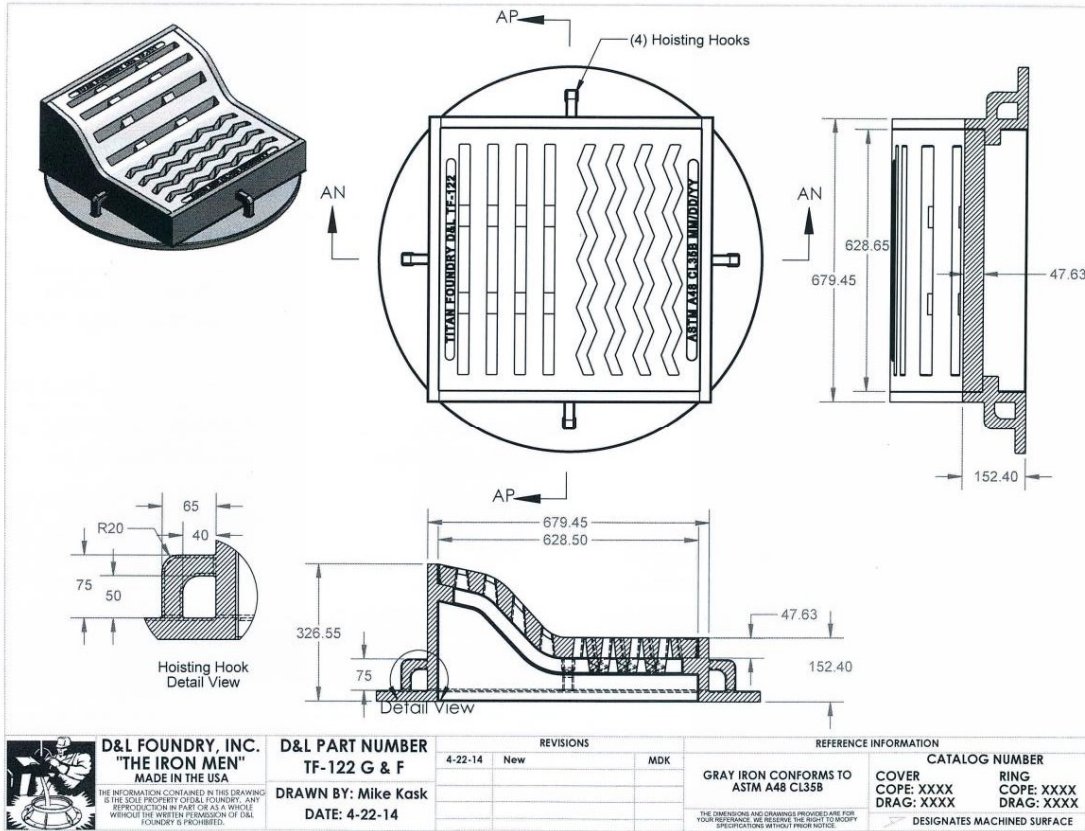


## **APPENDIX 'B'**

# **MODIFIED CURB INLET FRAME AND COVERS**

### APPENDIX 'B' – MODIFIED CURB INLET FRAME AND COVERS



**D&L FOUNDRY, INC.**  
**"THE IRON MEN"**  
 MADE IN THE USA

THE INFORMATION CONTAINED IN THIS DRAWING IS THE SOLE PROPERTY OF D&L FOUNDRY, INC. ANY REPRODUCTION IN PART OR AS A WHOLE WITHOUT THE WRITTEN PERMISSION OF D&L FOUNDRY IS PROHIBITED.

**D&L PART NUMBER**  
**TF-122 G & F**

**DRAWN BY: Mike Kask**  
**DATE: 4-22-14**

REVISIONS		
DATE	DESCRIPTION	BY
4-22-14	New	MDK

**REFERENCE INFORMATION**

GRAY IRON CONFORMS TO  
 ASTM A48 CL35B

THE DIMENSIONS AND CHANGES PROVIDED ARE FOR YOUR REFERENCE. WE RESERVE THE RIGHT TO MODIFY SPECIFICATIONS WITHOUT PRIOR NOTICE.

**CATALOG NUMBER**

COVER  
 COPE: XXXX  
 DRAG: XXXX

RING  
 COPE: XXXX  
 DRAG: XXXX

DESIGNATES MACHINED SURFACE