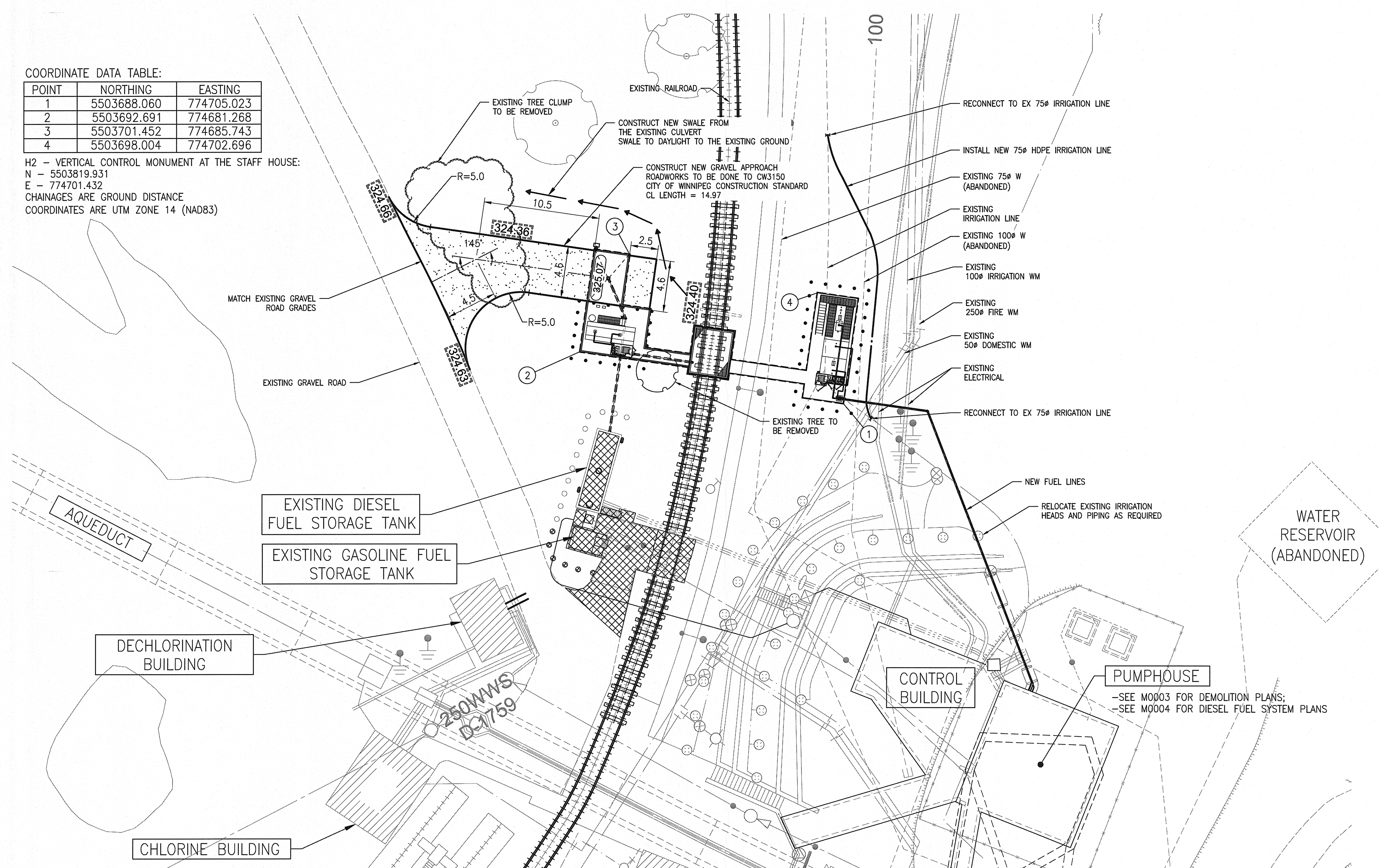


D SIZE 22" x 34" (559mm x 864mm) PLOT: 4/7/2015 11:10:28 AM AECOM REVIEW DRFT CHK CDD AECOM FILE NAME: C0001.dwg Saved By: demouderw

COORDINATE DATA TABLE:

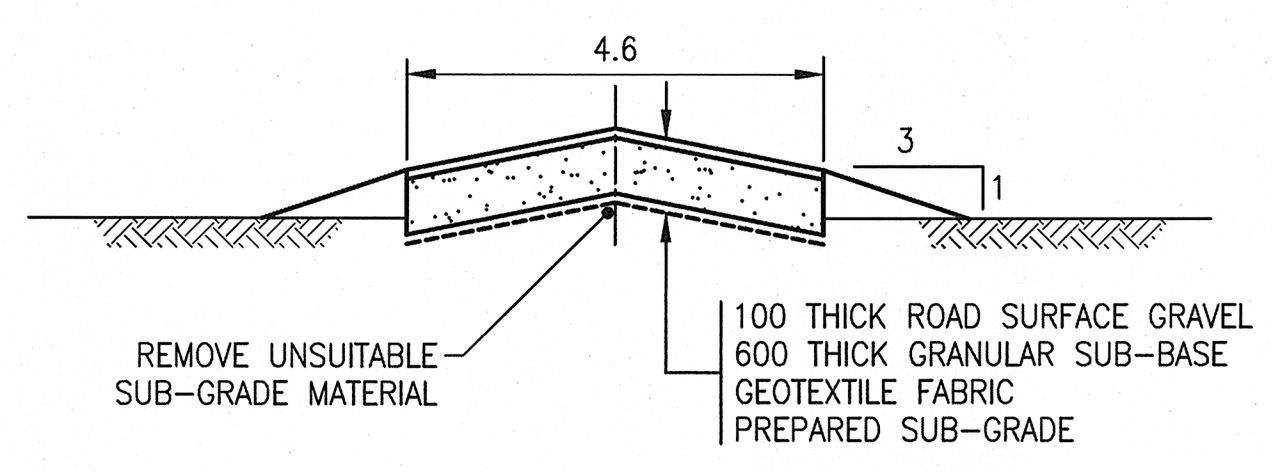
POINT	NORTHING	EASTING
1	5503688.060	774705.023
2	5503692.691	774681.268
3	5503701.452	774685.743
4	5503698.004	774702.696

H2 - VERTICAL CONTROL MONUMENT AT THE STAFF HOUSE:
 N - 5503819.931
 E - 774701.432
 CHAINAGES ARE GROUND DISTANCE
 COORDINATES ARE UTM ZONE 14 (NAD83)

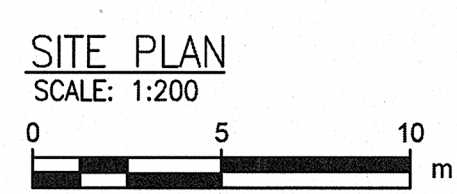


GENERAL NOTES

- ALL UTILITIES IN AREA OF EXCAVATION TO BE LOCATED; SOFT DIG TO CONFIRM UTILITIES.
- NOTIFY THE CONTRACT ADMINISTRATOR OF EXISTING SERVICES, UTILITIES, STRUCTURES OR OBSTRUCTIONS THAT ARE NOT SHOWN ON THE DRAWINGS OR ARE IN DIFFERENT LOCATIONS THAN SHOWN ON THE DRAWINGS AND ARE IN CONFLICT WITH THE WORK.
- THE CONTRACT ADMINISTRATOR WILL DETERMINE IF THE ALIGNMENT OR GRADE OF THE WORK CAN BE ALTERED OR IF THE EXISTING SERVICE, UTILITY, STRUCTURE OR OBSTRUCTION HAS TO BE RELOCATED OR REMOVED AND REPLACED. THE CITY WILL PAY COSTS FOR AUTHORIZED CHANGES IN WORK IN ACCORDANCE WITH CLAUSE GC:7 OF THE GENERAL CONDITIONS.
- REMOVE ABANDONED SERVICES THAT OCCUR IN EXCAVATIONS FOR AND ADJACENT TO THE WORK.
- EARTHWORK AND GRADING TO BE DONE TO CITY OF WINNIPEG CONSTRUCTION STANDARD AS APPLICABLE: CW3170 AND CW3110 SUB-GRADE, SUB-BASE AND BASE COURSE CONSTRUCTION.
- SITE RESTORATION TO BE DONE TO CITY OF WINNIPEG STANDARD AS APPLICABLE: CS3150, CW3520, CW3530 AND CW3540 (SOD, SEED, ETC.)
- CONTRACTOR TO ADVISE CONTRACT ADMINISTRATOR IF UNSUITABLE SUBGRADE IS ENCOUNTERED.



TYPICAL SECTION THRU NEW GRAVEL APPROACH
 N.T.S.



METRIC
 WHOLE NUMBERS INDICATE MILLIMETRES
 DECIMALIZED NUMBERS INDICATE METRES

BID OPPORTUNITY NO. 231-2015

DRAWING NUMBER	REFERENCE DRAWINGS
1-0600A-M0004-001-00	MECHANICAL - PUMPHOUSE AND GATEHOUSE DIESEL FUEL SYSTEM PLANS
1-0600A-M0003-001-00	MECHANICAL - PUMPHOUSE AND GATEHOUSE DEMOLITION PLANS

LOCATION APPROVED
 UNDERGROUND STRUCTURES

SUPR. U/G STRUCTURES DATE COMMITTEE

NOTE:
 LOCATION OF UNDERGROUND STRUCTURES AS SHOWN ARE BASED ON THE BEST INFORMATION AVAILABLE. BUT NO GUARANTEE IS GIVEN THAT ALL EXISTING UTILITIES ARE SHOWN OR THAT THE GIVEN LOCATIONS ARE EXACT. CONFIRMATION OF EXISTENCE AND EXACT LOCATION OF ALL SERVICES MUST BE OBTAINED FROM THE INDIVIDUAL UTILITIES BEFORE PROCEEDING WITH CONSTRUCTION.

AECOM
 Certificate of Authorization
 AECOM Canada Ltd.
 No. 4671 Date: April 7, 2015

AECOM	
DESIGNED BY MGM	CHECKED BY GD
DRAWN BY WJD	APPROVED BY <i>[Signature]</i>
HOR. SCALE 1:200	RELEASED FOR CONSTRUCTION
VERT. SCALE	DATE
NO. REVISIONS	DATE

PROFESSIONAL'S SEAL
 PROVINCE OF MANITOBA
A. NAGY
 April 7, 2015
 REGISTERED PROFESSIONAL ENGINEER
 CONSULTANT DRAWING NO.
 C0001

THE CITY OF WINNIPEG
 WATER AND WASTE DEPARTMENT

SHOAL LAKE
 INTAKE FUEL STORAGE AND DELIVERY SYSTEM REHABILITATION
 CIVIL

SITE PLAN
 DEMOLITION AND NEW FUEL STORAGE LAYOUT

SHEET 1 OF 22
 CITY DRAWING NUMBER
 REV
 1-0600A-C0001-001 0