

NOTE:  
These design documents are prepared solely for the use by the party with whom the design professional has entered into a contract and there are no representations of any kind made by the design professional to any party with whom the design professional has not entered into a contract.

EXISTING	LEGEND-PLAN	PROPOSED	EXISTING	LEGEND-PLAN	PROPOSED	EXISTING	LEGEND-PROFILE	PROPOSED
---	WATER MAIN	---	#111	ANCHOR	---	---	ROADWAY CENTRE LINE	---
---	LAND DRAINAGE SEWER	---	---	CIVIC ADDRESS	---	---	WEST GUTTER	---
---	WASTE WATER SEWER	---	---	IRON BAR	---	---	EAST GUTTER	---
---	HYDRO	---	---	HYDRO POLE & LIGHT STANDARD	---	---		---
---	M.T.S.	---	---	LIGHT STANDARD	---	---		---
---	GAS	---	---	HYDRO POLE	---	---		---
---	SIGNALS	---	---	CURB RAMP	---	---		---
---	MANHOLE	---	---	EDGE OF SIDEWALK	---	---		---
---	CATCH BASIN	---	---	EDGE OF SIDEWALK	---	---		---
---	CURB INLET	---	---	PROPERTY LINE	---	---		---
---	UTILITIES ADJUSTED	---	---	EDGE OF ASPHALT	---	---		---
---	PLUG	---	---	MODIFIED BARRIER CURB	---	---		---
---	HYDRANT	---	---	MODIFIED BARRIER CURB & GUTTER	---	---		---
---	VALVE	---	---	BARRIER CURB	---	---		---
---	CURB STOP	---	---	BARRIER CURB & GUTTER	---	---		---
---	GROUND GRADE	---	---	EDGE OF CONCRETE	---	---		---
---	PAVEMENT GRADE	---	---	SIDEWALK	---	---		---
---	LOT GRADE	---	---	CONCRETE	---	---		---
---	LEGEND-PLAN	---	---	ASPHALT	---	---		---
---		---	---	MILLED SURFACE	---	---		---

LOCATIONS APPROVED UNDERGROUND STRUCTURES		BENCHMARK LOCATION	
SIGNED BY:	DATE:	G.B.M. -	ELEV. 232.250
SUPV U/G STRUCTURES:	DATE:	BENCHMARK LOCATION "0" ON OPEN ON HYDRANT AT THE SOUTHEAST CORNER OF BREBEUF ROAD AND COTTONWOOD ROAD.	
LOCATION OF UNDERGROUND STRUCTURES AS SHOWN ARE BASED ON THE BEST INFORMATION AVAILABLE BUT NO GUARANTEE IS GIVEN THAT ALL EXISTING UTILITIES ARE SHOWN OR THAT THE GIVEN LOCATIONS ARE EXACT CONFIRMATION OF EXISTENCE AND EXACT LOCATION OF ALL SERVICES MUST BE OBTAINED FROM THE INDIVIDUAL UTILITIES BEFORE PROCEEDING			

- NOTES:
- ALL WORK AND MATERIALS TO BE IN ACCORDANCE WITH THE LATEST REVISION OF THE CITY OF WINNIPEG STANDARD CONSTRUCTION SPECIFICATIONS.
  - ALL ROADWAY DIMENSIONS SHOWN ARE TO BACK OF CURB.
  - BOULEVARD RESTORATION TO BE SOD UNLESS OTHERWISE NOTED.
  - ADD 200.00 TO ELEVATIONS TO OBTAIN GEODETIC ELEVATION.
  - ALL PRIVATE WALKWAYS TO BE ADJUSTED TO NEW TOP OF CURB ELEVATION, AS REQUIRED.

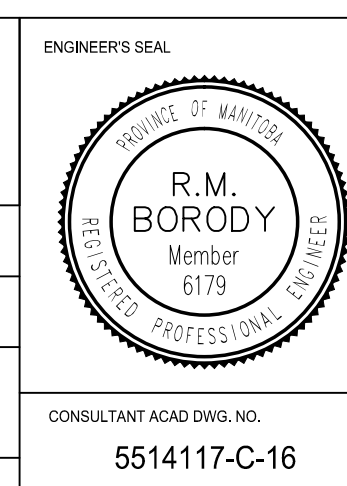
**METRIC**  
WHOLE NUMBERS INDICATE MILLIMETRES  
DECIMALIZED NUMBERS INDICATE METRES



**THE CITY OF WINNIPEG**  
PUBLIC WORKS DEPARTMENT  
ENGINEERING DIVISION

**2015 STREET RENEWAL PROGRAM**  
BREBEUF ROAD - COTTONWOOD ROAD TO  
DUSSAULT AVENUE  
PAVEMENT REHABILITATION  
STA. 1+00 TO STA. 2+20

CITY DRAWING NUMBER  
SHEET 16 OF 17  
BID NO.  
24-2015



**MMM GROUP**

DESIGNED BY: EC  
CHECKED BY: MS  
DRAWN BY: CDM/HK  
APPROVED BY: -  
RELEASED FOR CONSTRUCTION: -  
DATE: 01-DEC-2014

MMM Group Limited  
Suite 111 - 93 Lombard Ave.  
Winnipeg, MB R3B 3B1  
t. 204.943.3178  
f. 204.943.4948  
www.mmm.ca

ENGINEER'S SEAL  
CONSULTANT ACAD DWG. NO.  
551417-C-16

May 12, 2015 - 11:42am  
 P:\2015\00-551417\2015 Local Streets and Alley Renewal Program\15-R-04\MMM Drawings\Construction Drawings\Rehabilitation\551417-C16-C17 Brebeuf Road Plan & Profile\_20150312.dwg - tab 2/6