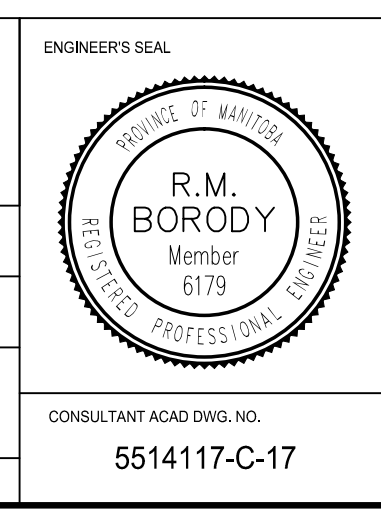


NOTE:
These design documents are prepared solely for the use by the party with whom the design professional has entered into a contract and there are no representations of any kind made by the design professional to any party with whom the design professional has not entered into a contract.

LEGEND-PLAN	PROPOSED	EXISTING	LEGEND-PLAN	PROPOSED	EXISTING	LEGEND-PROFILE	PROPOSED
WATER MAIN	---	---	ANCHOR	---	---	ROADWAY CENTRE LINE	---
LAND DRAINAGE SEWER	---	---	#111 CIVIC ADDRESS	---	---	WEST GUTTER	---
WASTE WATER SEWER	---	---	IRON BAR	---	---	EAST GUTTER	---
HYDRO	---	---	HYDRO POLE & LIGHT STANDARD	---	---		
M.T.S.	---	---	LIGHT STANDARD	---	---		
GAS	---	---	HYDRO POLE	---	---		
SIGNALS	---	---	CURB RAMP	---	---		
MANHOLE	---	---	EDGE OF SIDEWALK	---	---		
CATCH BASIN	---	---	PROPERTY LINE	---	---		
CURB INLET	---	---	EDGE OF ASPHALT	---	---		
UTILITIES ADJUSTED	---	---	MODIFIED BARRIER CURB	---	---		
PLUG	---	---	MODIFIED BARRIER CURB & GUTTER	---	---		
HYDRANT	---	---	BARRIER CURB	---	---		
VALVE	---	---	BARRIER CURB & GUTTER	---	---		
CURB STOP	---	---	EDGE OF CONCRETE	---	---		
GROUND GRADE	---	---	SIDEWALK	---	---		
PAVEMENT GRADE	(31.00)	---	CONCRETE	---	---		
LOT GRADE	[31.00]	---	ASPHALT	---	---		
EXISTING	---	---	MILLED SURFACE	---	---		
LEGEND-PLAN	PROPOSED	EXISTING	LEGEND-PLAN	PROPOSED	EXISTING	LEGEND-PROFILE	PROPOSED

LOCATIONS APPROVED UNDERGROUND STRUCTURES		BENCHMARK LOCATION	
SIGNED BY:	DATE:	G.B.M.:	ELEV. 232.250
LOCATIONS OF UNDERGROUND STRUCTURES AS SHOWN ARE BASED ON THE BEST INFORMATION AVAILABLE BUT NO GUARANTEE IS GIVEN THAT ALL EXISTING UTILITIES ARE SHOWN OR THAT THE GIVEN LOCATIONS ARE EXACT CONFIRMATION OF EXISTENCE AND EXACT LOCATION OF ALL SERVICES MUST BE OBTAINED FROM THE INDIVIDUAL UTILITIES BEFORE PROCEEDING		BENCHMARK LOCATION "O" ON OPEN ON HYDRANT AT THE SOUTHEAST CORNER OF BREBEUF ROAD AND COTTONWOOD ROAD.	
NO.	REVISIONS	DATE	BY

MMM GROUP		MMM Group Limited	
DESIGNED BY	EC	Checked By	MS
DRAWN BY	CDM/HK	APPROVED BY	-
DATE	01-DEC-2014	RELEASED FOR CONSTRUCTION	DATE



THE CITY OF WINNIPEG
PUBLIC WORKS DEPARTMENT
ENGINEERING DIVISION

2015 STREET RENEWAL PROGRAM
BREBEUF ROAD - COTTONWOOD ROAD TO
DUSSAULT AVENUE
PAVEMENT REHABILITATION
STA. 2+20 TO STA. 2+91

CITY DRAWING NUMBER
SHEET 17 OF 17
BID NO. 24-2015

METRIC
WHOLE NUMBERS INDICATE MILLIMETRES
DECIMALIZED NUMBERS INDICATE METRES

APEGM
Certificate of Authorization
MMM Group Limited
No. 4531

Mar 12, 2015 - 11:42am
 P:\2015\00-551929\041417 - 2015 Local Streets and Alley Renewal Program\15-R-04\MM\Drawings\Construction\Rehabilitation\551417-C16-C17 Brebeuf Road Plan & Profile-20150312.dwg - tab.C17