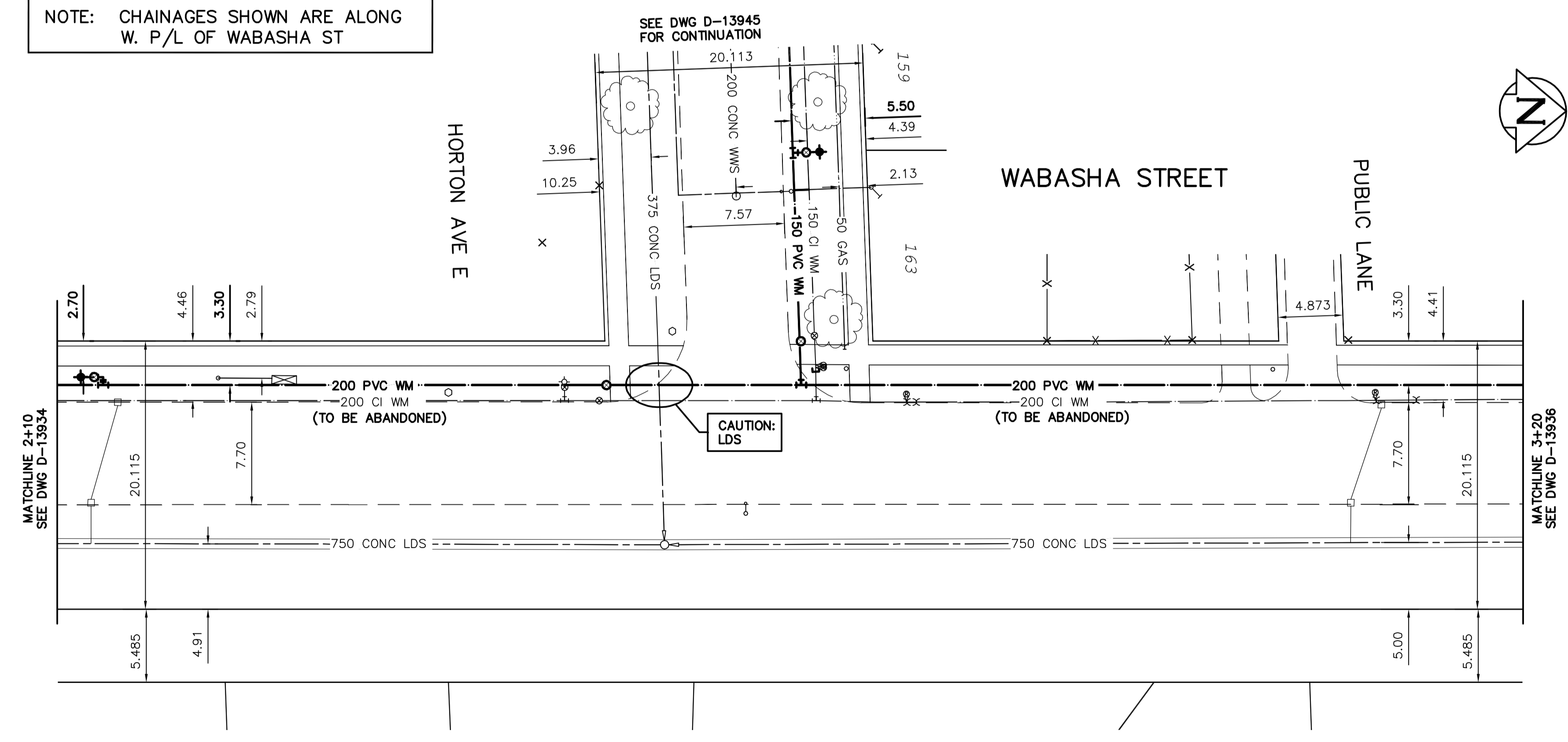


NOTE: CHAINAGES SHOWN ARE ALONG W. P/L OF WABASHA ST

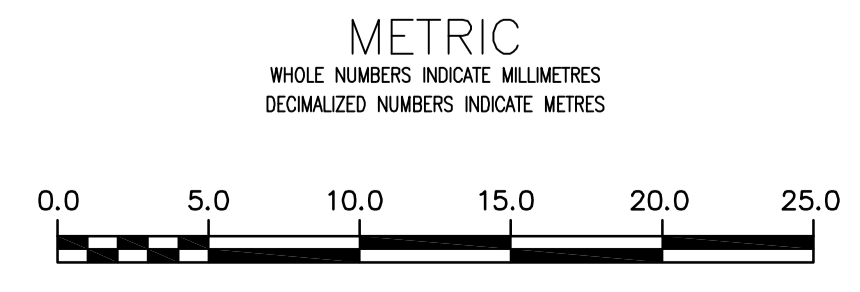


WATER SERVICE INFORMATION

| ADDRESS | SIZE (mm) MATERIAL (STREET) | SIZE (mm) MATERIAL (PROP.) | SHORT & LONG MEASUREMENT | CORP. LOCATION | REMARKS |
|------------------------------|-----------------------------|----------------------------|--------------------------|----------------|-------------------|
| 163 HORTON AVE E RESIDENTIAL | - | - | 1.02 EWL OF HSE | - | RECONNECT SERVICE |
| 159 HORTON AVE E RESIDENTIAL | - | - | 8.85 FROM HSE FRONT | - | RECONNECT SERVICE |
| 159 HORTON AVE E RESIDENTIAL | - | - | 2.69 EWL OF HSE | - | RECONNECT SERVICE |
| 159 HORTON AVE E RESIDENTIAL | - | - | 8.69 FROM HSE FRONT | - | RECONNECT SERVICE |

* SERVICES TO BE RENEWED TO P/L ALL OTHERS TO BE RECONNECTED

NOTE: ALL GATE VALVES TO BE INSTALLED CLOCKWISE TO CLOSE



WARNING
 IF POWER EQUIPMENT OR EXPLOSIVES ARE TO BE USED FOR EXCAVATION ON THIS PROJECT THE CONTRACTOR MUST:
 1) NOTIFY THE GAS COMPANY OF THE PROPOSED LOCATION OF EXCAVATION.
 2) TAKE PRECAUTION TO AVOID DAMAGE TO GAS COMPANY INSTALLATIONS.
 SEE PROVINCIAL REGULATION 210/72 FOR DETAILS

LOCATION APPROVED
 UNDERGROUND STRUCTURES
 SUPV. U/G STRUCTURES COMMITTEE DATE
 NOTE:
 LOCATION OF UNDERGROUND STRUCTURES AS SHOWN ARE BASED ON THE BEST INFORMATION AVAILABLE BUT NO GUARANTEE IS GIVEN THAT ALL EXISTING UTILITIES ARE SHOWN OR THAT THE GIVEN LOCATIONS ARE EXACT. CONFIRMATION OF EXISTENCE AND EXACT LOCATION OF ALL SERVICES MUST BE OBTAINED FROM THE INDIVIDUAL UTILITIES BEFORE PROCEEDING WITH CONSTRUCTION.

B.M. 10-028 ELEV. 233.050m
 87R482 - S.E. Cor. McMeane Ave. W. & Winona St., Tbt. on top of 0.05 m sq. x 2.4 m iron tube, 3.6 m W. of E.L. Winona St. & 5.0 m N. of S.L. McMeane Ave. W.

CONSTRUCTION COMPLETION DATE: YYYY MM DD

| NO. | REVISIONS | DATE | BY |
|-----|-------------------|----------|------|
| 0 | ISSUED FOR TENDER | 15/03/25 | J.C. |

DESIGNED BY: J.H. CHECKED BY: J.C.
 DRAWN BY: J.H. APPROVED BY: J.C.
 SCALE: HORIZONTAL 1:250, VERTICAL 1:50
 DATE: 2015 03 25
 PLOT DATE: 2015 03 25

ENGINEER'S SEAL
 CONSULTANT DRAWING NUMBER: C-203

THE CITY OF WINNIPEG
 WATER AND WASTE DEPARTMENT
 ENGINEERING DIVISION

2015 WATERMAIN RENEWALS
 CONTRACT 2
WABASHA STREET
 110>NNL OF HAROLD AVENUE E
 TO 50>NNL OF HORTON AVENUE E

SHEET 4 OF 17
 CITY DRAWING NUMBER: D-13935