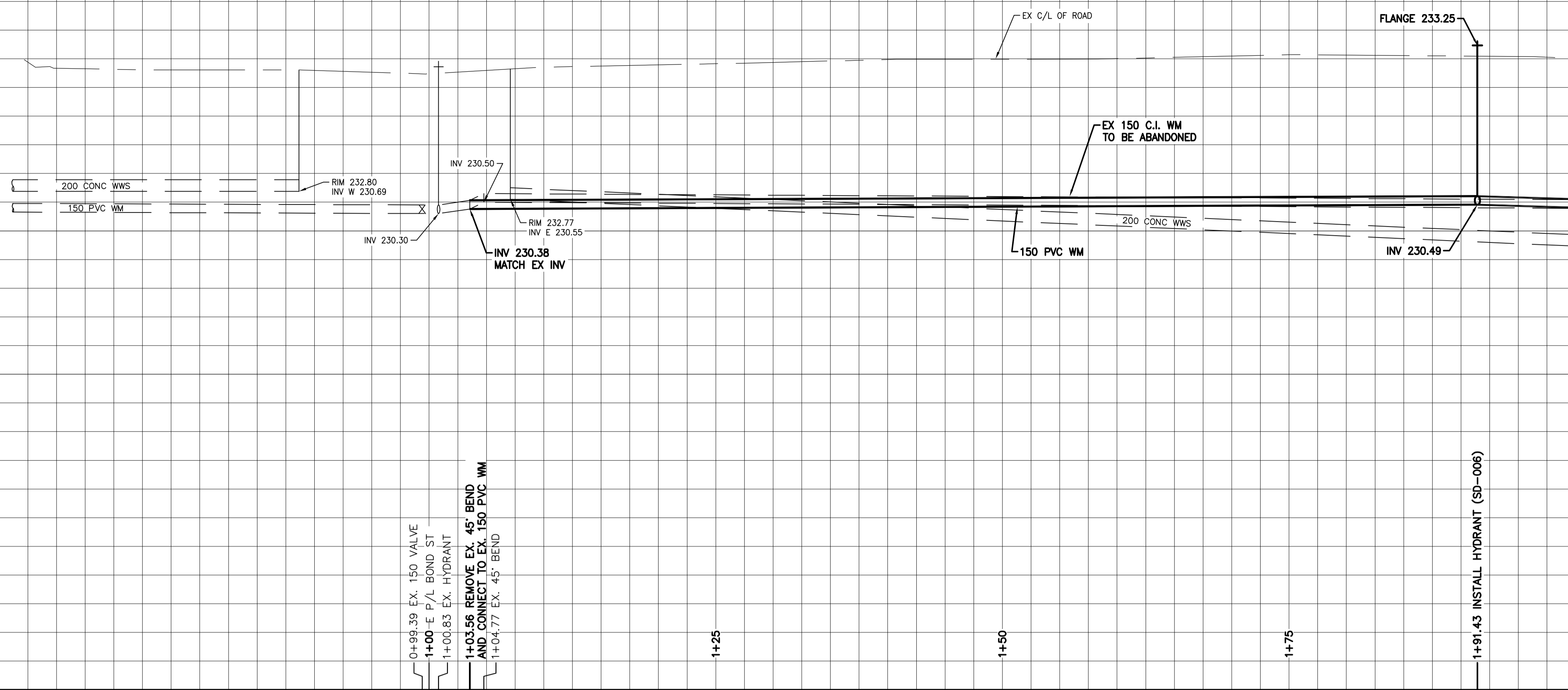


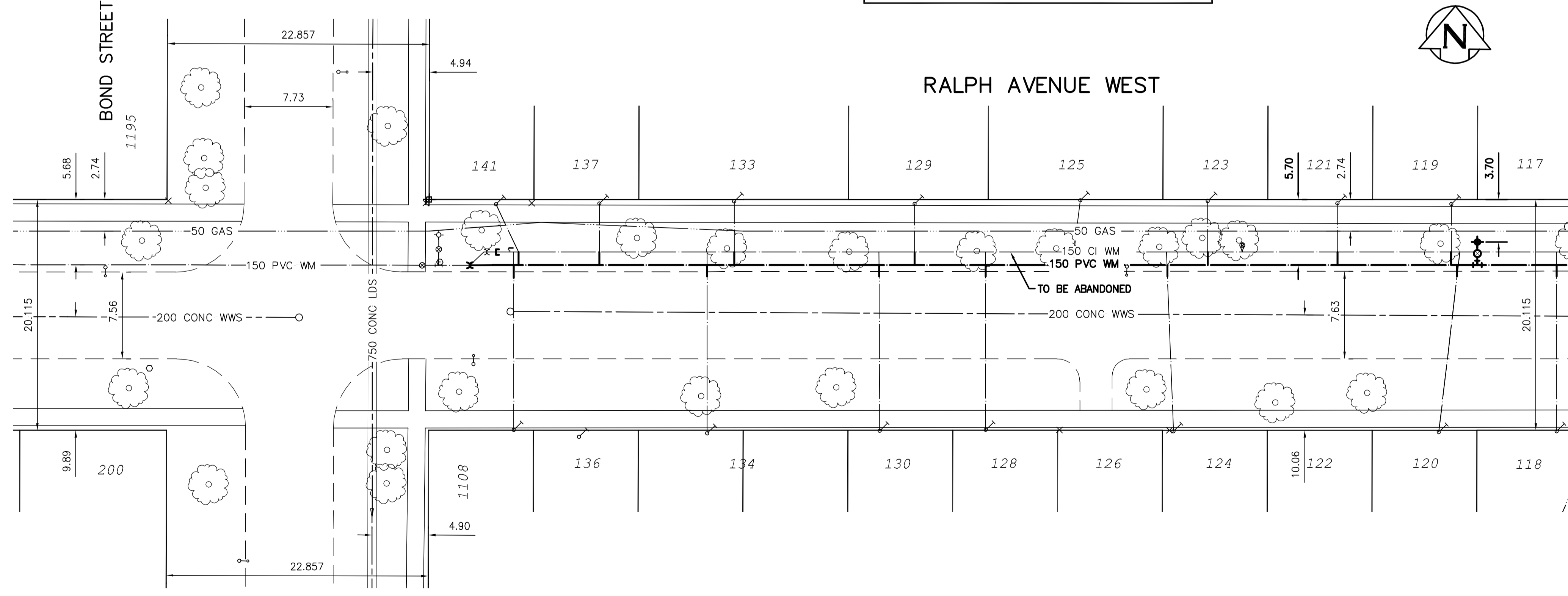
234.0
233.0
232.0
231.0
230.0
229.0
228.0
227.0
226.0

234.0
233.0
232.0
231.0
230.0
229.0
228.0
227.0
226.0



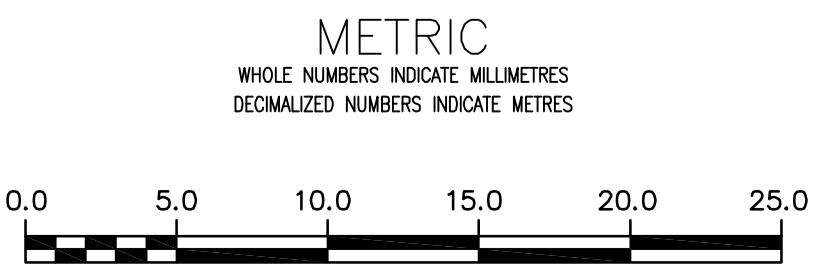
WATER SERVICE INFORMATION					
ADDRESS	SIZE (mm) MATERIAL (STREET)	SIZE (mm) MATERIAL (PROP.)	SHORT & LONG MEASUREMENT	CORP. LOCATION	REMARKS
1108 BOND ST	-	-	-	-	RECONNECT SERVICE
RESIDENTIAL	-	-	-	-	-
141 RALPH AV W	20	20	4.6 EWL	6.4 E OF HYD	RECONNECT SERVICE
RESIDENTIAL	CU	CU	6.1 EWL	-	-
137 RALPH AV W	-	-	2.74 WEL HSE	-	RECONNECT SERVICE
RESIDENTIAL	CU	CU	5.49 FROM HSE FRONT	-	-
136 RALPH AV W	-	-	1.83 EWL HSE	-	RECONNECT SERVICE
RESIDENTIAL	CU	CU	5.49 OUT	-	-
134 RALPH AV W	-	-	2.14 EWL HSE	-	RECONNECT SERVICE
RESIDENTIAL	CU	CU	3.66 FROM HSE FRONT	-	-
133 RALPH AV W	-	-	4.27 WEL HSE	-	RECONNECT SERVICE
RESIDENTIAL	CU	CU	5.18 FROM HSE FRONT	-	-
130 RALPH AV W	20	20	1.52 E W/L	-	RECONNECT SERVICE
RESIDENTIAL	CU	CU	-	-	-
129 RALPH AV W	-	-	3.05 EWL HSE	-	RECONNECT SERVICE
RESIDENTIAL	CU	CU	5.49 FROM HSE FRONT	-	-
128 RALPH AV W	20	20	1.98 EWL HSE	-	RECONNECT SERVICE
RESIDENTIAL	CU	CU	4.18 FROM HSE FRONT	-	-
125 RALPH AV W	20	20	1.22 EWL HSE	0.91 W OF S/C	RECONNECT SERVICE
RESIDENTIAL	CU	CU	4.27 FROM HSE FRONT	-	-
124 RALPH AV W	20	16	1.07 WEL HSE	0.61 W OF S/C	RECONNECT SERVICE
RESIDENTIAL	CU	LEAD	3.96 FROM HSE FRONT	-	-
123 RALPH AV W	-	-	1.52 EWL HSE	-	RECONNECT SERVICE
RESIDENTIAL	CU	CU	5.94 FROM HSE FRONT	-	-
121 RALPH AV W	-	-	1.52 WEL HSE	-	RECONNECT SERVICE
RESIDENTIAL	CU	CU	7.32 FROM HSE FRT CHIM	-	-
120 RALPH AV W	20	20	2.29 WEL HSE	-	RECONNECT SERVICE
RESIDENTIAL	CU	CU	3.66 WELL	-	-
119 RALPH AV W	-	-	1.40 WEL	-	RECONNECT SERVICE
RESIDENTIAL	CU	CU	5.79 FROM HSE FRONT	-	-
118 RALPH AV W	20	20	1.0 WEEL	-	RECONNECT SERVICE
RESIDENTIAL	CU	CU	-	-	-
117 RALPH AV W	-	-	0.30 EEL HSE	-	RECONNECT SERVICE
RESIDENTIAL	CU	CU	3.81 FROM HSE FRONT	-	-

NOTE: CHAINAGES SHOWN ARE ALONG N. P/L OF RALPH AV W



* SERVICES TO BE RENEWED TO P/L ALL OTHERS TO BE RECONNECTED

NOTE: ALL GATE VALVES TO BE INSTALLED CLOCKWISE TO CLOSE



WARNING
IF POWER EQUIPMENT OR EXPLOSIVES ARE TO BE USED FOR EXCAVATION ON THIS PROJECT THE CONTRACTOR MUST:
1) NOTIFY THE GAS COMPANY OF THE PROPOSED LOCATION OF EXCAVATION.
2) TAKE PRECAUTION TO AVOID DAMAGE TO GAS COMPANY INSTALLATIONS.
SEE PROVINCIAL REGULATION 210/72 FOR DETAILS

LOCATION APPROVED
UNDERGROUND STRUCTURES
SUPV. U/G STRUCTURES COMMITTEE DATE
NOTE:
LOCATION OF UNDERGROUND STRUCTURES AS SHOWN ARE BASED ON THE BEST INFORMATION AVAILABLE BUT NO GUARANTEE IS GIVEN THAT ALL EXISTING UTILITIES ARE SHOWN OR THAT THE GIVEN LOCATIONS ARE EXACT. CONFIRMATION OF EXISTENCE AND EXACT LOCATION OF ALL SERVICES MUST BE OBTAINED FROM THE INDIVIDUAL UTILITIES BEFORE PROCEEDING WITH CONSTRUCTION.

B.M. 10-028 ELEV. 233.050m	879482 - S.E. Cor. McMeane Ave. W. & Winona St., Tbt. on top of 0.05 m sq x 2.4 m iron tube, 3.6 m W. of E.L. Winona St. & 5.0 m N. of S.L. McMeane Ave. W.		
CONSTRUCTION COMPLETION DATE: YYYY MM DD			
0	ISSUED FOR TENDER	15/03/25	J.C.
NO.	REVISIONS	DATE	BY

DESIGNED BY J.H. CHECKED BY J.C.
DRAWN BY J.H. APPROVED BY J.C.
SCALE: HORIZONTAL 1:250 VERTICAL 1:50
DATE 2015 03 25
PLOT DATE: 2015 03 25

ENGINEER'S SEAL
CONSULTANT DRAWING NUMBER
C-205

THE CITY OF WINNIPEG
WATER AND WASTE DEPARTMENT
ENGINEERING DIVISION
2015 WATERMAIN RENEWALS
CONTRACT 2
RALPH AVENUE WEST
BOND STREET TO
100 EEL OF BOND STREET

SHEET 6 OF 17
CITY DRAWING NUMBER
D-13937