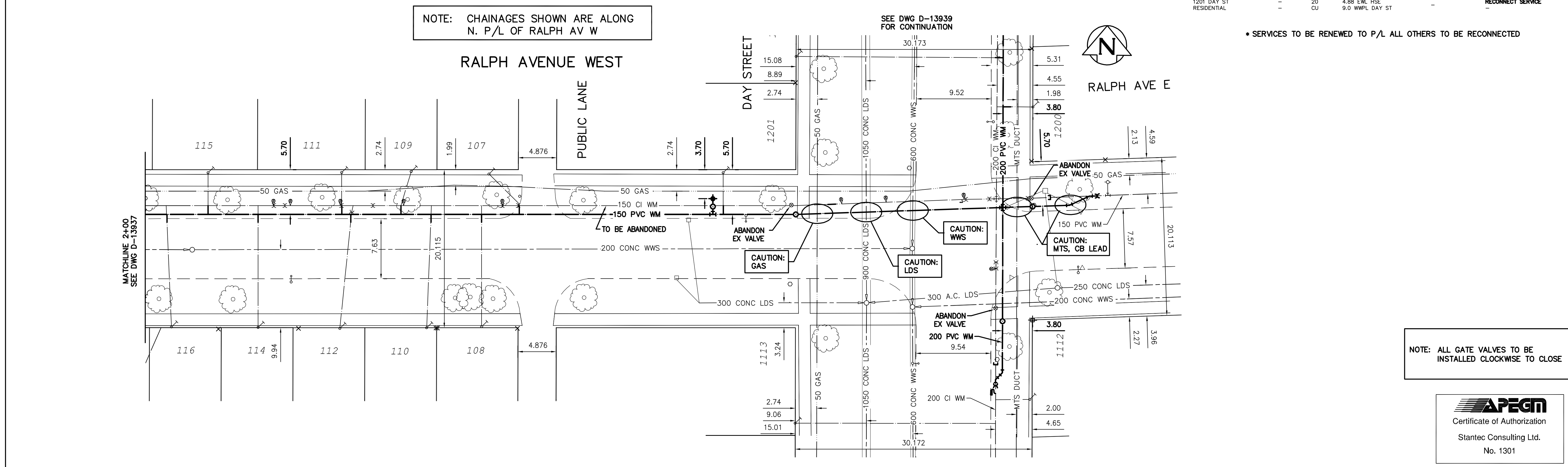


| WATER SERVICE INFORMATION | | | | | |
|---------------------------|-----------------------------|----------------------------|--------------------------|----------------|-------------------|
| ADDRESS | SIZE (mm) MATERIAL (STREET) | SIZE (mm) MATERIAL (PROP.) | SHORT & LONG MEASUREMENT | CORP. LOCATION | REMARKS |
| 116 RALPH AV W | - | 20 | 3.1 E WLL | - | RECONNECT SERVICE |
| RESIDENTIAL | - | CU | - | - | - |
| 115 RALPH AV W | - | 20 | 4.42 EWL HSE | - | RECONNECT SERVICE |
| RESIDENTIAL | - | CU | 5.49 FROM HSE FRONT | - | - |
| 114 RALPH AV W | - | 20 | 3.05 E OF W/LINE | - | RECONNECT SERVICE |
| RESIDENTIAL | - | CU | 6.50 FROM HSE FRT CHIM | - | - |
| 111 RALPH AV W | - | 20 | 1.83 WEL HSE | - | RECONNECT SERVICE |
| RESIDENTIAL | - | CU | 5.03 FROM HSE FRONT | - | - |
| 110 RALPH AV W | - | 20 | 1.83 WEL HSE | 0.61 E OF S/C | RECONNECT SERVICE |
| RESIDENTIAL | - | CU | 4.27 FROM HSE FRONT | - | - |
| 109 RALPH AV W | - | 20 | 3.66 EWL HSE | 50.29 WML DAY | RECONNECT SERVICE |
| RESIDENTIAL | - | CU | 3.66 FROM HSE FRONT | - | - |
| 108 RALPH AV W | - | 20 | 3.05 WEL HSE | - | RECONNECT SERVICE |
| RESIDENTIAL | - | CU | 7.92 FROM HSE FRONT | - | - |
| 107 RALPH AV W | - | 20 | 2.29 WEL HSE | 6 E OF S/C | RECONNECT SERVICE |
| RESIDENTIAL | - | CU | 7.92 FROM HSE FRONT | - | - |
| 1112 DAY ST | - | 12 | 2.10 NSL OF HSE | - | RECONNECT SERVICE |
| RESIDENTIAL | - | LEAD | 150 STREET LINE | - | - |
| 1113 DAY ST | - | 12 | 0.61 NSL OF HSE | - | RECONNECT SERVICE |
| RESIDENTIAL | - | LEAD | 150 STREET LINE | - | - |
| 1200 DAY ST | - | 16 | 3.23 NSL HSE | - | RECONNECT SERVICE |
| RESIDENTIAL | - | LEAD | 150 STREET LINE | - | - |
| 1201 DAY ST | - | 20 | 4.88 EWL HSE | - | RECONNECT SERVICE |
| RESIDENTIAL | - | CU | 9.0 WWPL DAY ST | - | - |

NOTE: CHAINAGES SHOWN ARE ALONG N. P/L OF RALPH AV W

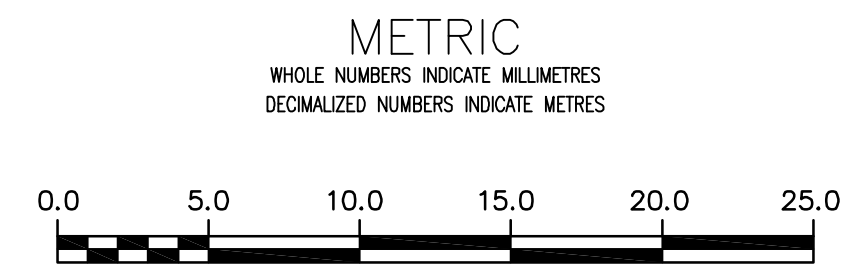
SEE DWG D-13939 FOR CONTINUATION



* SERVICES TO BE RENEWED TO P/L ALL OTHERS TO BE RECONNECTED

NOTE: ALL GATE VALVES TO BE INSTALLED CLOCKWISE TO CLOSE

APEGN
Certificate of Authorization
Stantec Consulting Ltd.
No. 1301



WARNING
IF POWER EQUIPMENT OR EXPLOSIVES ARE TO BE USED FOR EXCAVATION ON THIS PROJECT THE CONTRACTOR MUST:
1) NOTIFY THE GAS COMPANY OF THE PROPOSED LOCATION OF EXCAVATION.
2) TAKE PRECAUTION TO AVOID DAMAGE TO GAS COMPANY INSTALLATIONS.
SEE PROVINCIAL REGULATION 210/72 FOR DETAILS

LOCATION APPROVED
UNDERGROUND STRUCTURES
SUPV. U/G STRUCTURES COMMITTEE DATE
NOTE:
LOCATION OF UNDERGROUND STRUCTURES SHOWN ARE BASED ON THE BEST INFORMATION AVAILABLE BUT NO GUARANTEE IS GIVEN THAT ALL EXISTING UTILITIES ARE SHOWN OR THAT THE GIVEN LOCATIONS ARE EXACT. CONFIRMATION OF EXISTENCE AND EXACT LOCATION OF ALL SERVICES MUST BE OBTAINED FROM THE INDIVIDUAL UTILITIES BEFORE PROCEEDING WITH CONSTRUCTION.

| | | | |
|--|---|----------|------|
| B.M. 10-028 ELEV. 233.050m | 879482 - S.E. Cor. McMeane Ave. W. & Winona St., Tbt. on top of 0.05 m sq x 2.4 m iron tube, 3.6 m W. of E.L. Winona St. & 5.0 m N. of S.L. McMeane Ave. W. | | |
| CONSTRUCTION COMPLETION DATE: YYYY MM DD | | | |
| 0 | ISSUED FOR TENDER | 15/03/25 | J.C. |
| NO. | REVISIONS | DATE | BY |

Stantec

| | | | |
|-------------|-----------------------------------|---------------------------|------|
| DESIGNED BY | J.H. | CHECKED BY | J.C. |
| DRAWN BY | J.H. | APPROVED BY | J.C. |
| SCALE: | HORIZONTAL 1:250 VERTICAL 1:50 | | |
| DATE | 2015 03 25 | RELEASED FOR CONSTRUCTION | DATE |

ENGINEER'S SEAL
CONSULTANT DRAWING NUMBER
C-206

THE CITY OF WINNIPEG
WATER AND WASTE DEPARTMENT
ENGINEERING DIVISION

2015 WATERMAIN RENEWALS
CONTRACT 2
RALPH AVENUE WEST
100 EEL OF BOND STREET TO DAY STREET

SHEET 7 OF 17
CITY DRAWING NUMBER
D-13938