

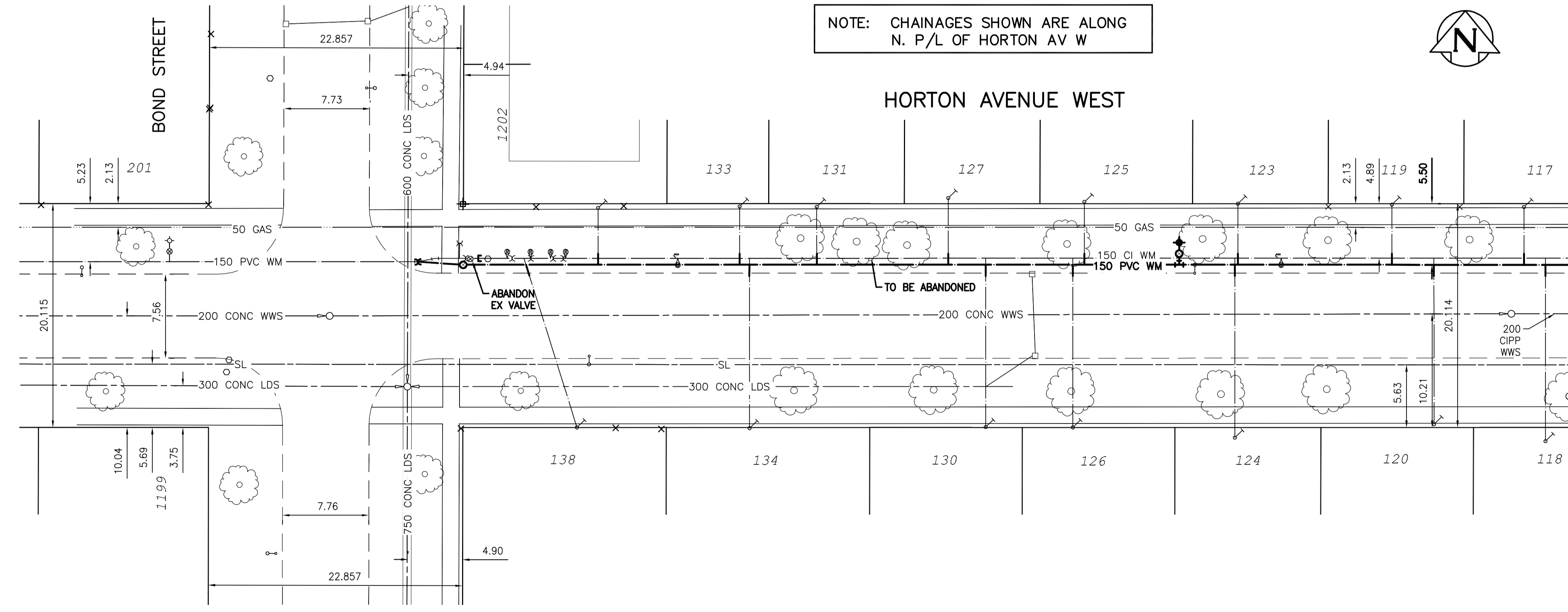
WATER SERVICE INFORMATION					
ADDRESS	SIZE (mm) MATERIAL (STREET)	SIZE (mm) MATERIAL (PROP.)	SHORT & LONG MEASUREMENT	CORP. LOCATION	REMARKS
1199 BOND ST	-	20	3.29 SNL HSE	-	RECONNECT SERVICE
RESIDENTIAL	-	CU	6.92 FROM HSE FRONT	-	RECONNECT SERVICE
1202 BOND ST	-	20	2.99 WEL HSE	-	RECONNECT SERVICE
RESIDENTIAL	-	CU	4.91 FROM SOUTH WALL	-	RECONNECT SERVICE
201 HORTON AV W	-	20	1.52 WEL HSE	-	RECONNECT SERVICE
RESIDENTIAL	-	CU	7.62 OUT	-	RECONNECT SERVICE
138 HORTON AV W	20	-	2.5 EWL HSE	OPP C/S	RECONNECT SERVICE
RESIDENTIAL	CU	-	5.5 EWLL	-	RECONNECT SERVICE
134 HORTON AV W	-	-	3.35 WEL OF HSE	-	RECONNECT SERVICE
RESIDENTIAL	-	-	4.75 FROM HSE FRONT	-	RECONNECT SERVICE
133 HORTON AV W	-	-	5.18 EWL OF HSE	-	RECONNECT SERVICE
RESIDENTIAL	-	-	5.97 FROM HSE FRONT	-	RECONNECT SERVICE
131 HORTON AV W	-	-	2.13 EWL OF HSE	-	RECONNECT SERVICE
RESIDENTIAL	-	-	5.97 FROM HSE FRONT	-	RECONNECT SERVICE
130 HORTON AV W	-	-	1.83 WEL OF HSE	-	RECONNECT SERVICE
RESIDENTIAL	-	-	4.27 FROM HSE FRONT	-	RECONNECT SERVICE
127 HORTON AV W	-	-	2.13 EWL OF HSE	-	RECONNECT SERVICE
RESIDENTIAL	-	-	6.10 FROM HSE FRONT	-	RECONNECT SERVICE
126 HORTON AV W	-	-	3.54 EWL OF HSE	-	RECONNECT SERVICE
RESIDENTIAL	-	-	7.92 FROM HSE FRONT	-	RECONNECT SERVICE
125 HORTON AV W	-	-	2.62 EWL OF HSE	-	RECONNECT SERVICE
RESIDENTIAL	-	-	7.62 FROM HSE FRONT	-	RECONNECT SERVICE
124 HORTON AV W	-	-	3.96 EWL OF HSE	-	RECONNECT SERVICE
RESIDENTIAL	-	-	6.40 FROM HSE FRONT	-	RECONNECT SERVICE
123 HORTON AV W	-	-	1.83 EWL OF HSE	-	RECONNECT SERVICE
RESIDENTIAL	-	-	7.32 FROM HSE FRONT	-	RECONNECT SERVICE
120 HORTON AV W	-	-	2.8 WEL HSE	-	RECONNECT SERVICE
RESIDENTIAL	-	-	7.62 FROM HSE FRONT	-	RECONNECT SERVICE
119 HORTON AV W	-	-	2.74 EWL OF HSE	-	RECONNECT SERVICE
RESIDENTIAL	-	-	7.80 FROM HSE FRONT	-	RECONNECT SERVICE
118 HORTON AV W	-	-	6.10 WEL OF HSE	-	RECONNECT SERVICE
RESIDENTIAL	-	-	6.71 FROM HSE FRONT	-	RECONNECT SERVICE
117 HORTON AV W	-	-	4.15 EWL OF HSE	-	RECONNECT SERVICE
RESIDENTIAL	-	-	7.62 FROM HSE FRONT	-	RECONNECT SERVICE

\* SERVICES TO BE RENEWED TO R. ALL OTHERS TO BE RECONNECTED

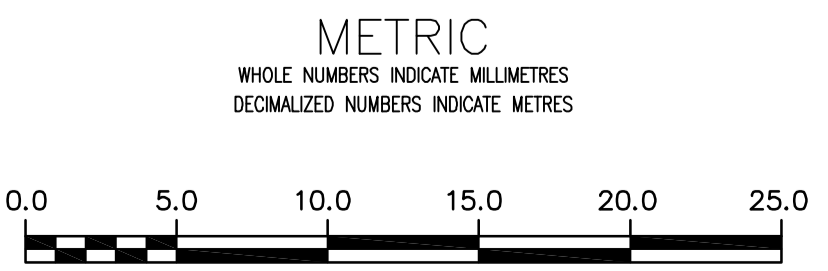
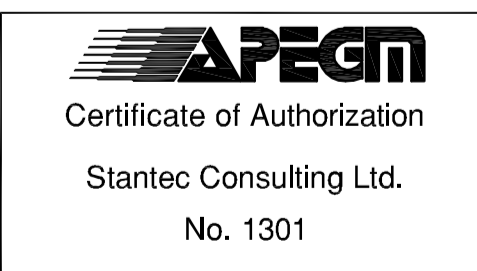
NOTE: CHAINAGES SHOWN ARE ALONG N. P/L OF HORTON AV W



HORTON AVENUE WEST



NOTE: ALL GATE VALVES TO BE INSTALLED CLOCKWISE TO CLOSE



**WARNING**  
IF POWER EQUIPMENT OR EXPLOSIVES ARE TO BE USED FOR EXCAVATION ON THIS PROJECT THE CONTRACTOR MUST:  
1) NOTIFY THE GAS COMPANY OF THE PROPOSED LOCATION OF EXCAVATION.  
2) TAKE PRECAUTION TO AVOID DAMAGE TO GAS COMPANY INSTALLATIONS.  
SEE PROVINCIAL REGULATION 210/72 FOR DETAILS

**LOCATION APPROVED**  
UNDERGROUND STRUCTURES  
SUPV. U/G STRUCTURES COMMITTEE DATE  
NOTE:  
LOCATION OF UNDERGROUND STRUCTURES AS SHOWN ARE BASED ON THE BEST INFORMATION AVAILABLE BUT NO GUARANTEE IS GIVEN THAT ALL EXISTING UTILITIES ARE SHOWN OR THAT THE GIVEN LOCATIONS ARE EXACT. CONFIRMATION OF EXISTENCE AND EXACT LOCATION OF ALL SERVICES MUST BE OBTAINED FROM THE INDIVIDUAL UTILITIES BEFORE PROCEEDING WITH CONSTRUCTION.

B.M. 10-028	879482 - S.E. Cor. McMeane Ave. W. & Winona St., Tbt.		
ELEV. 233.050m	on top of 0.05 m sq x 2.4 m iron tube, 3.6 m W. of E.L. Winona St. & 5.0 m N. of S.L. McMeane Ave. W.		
CONSTRUCTION COMPLETION DATE: YYYY MM DD			
0	ISSUED FOR TENDER	15/03/25	J.C.
NO.	REVISIONS	DATE	BY

DESIGNED BY: J.H. CHECKED BY: J.C.  
DRAWN BY: J.H. APPROVED BY: J.C.  
SCALE: HORIZONTAL 1:250 VERTICAL 1:50  
DATE: 2015 03 25

ENGINEER'S SEAL  
CONSULTANT DRAWING NUMBER: C-209

**THE CITY OF WINNIPEG**  
WATER AND WASTE DEPARTMENT  
ENGINEERING DIVISION  
2015 WATERMAIN RENEWALS  
CONTRACT 2  
HORTON AVENUE WEST  
BOND STREET TO  
100 EEL OF BOND STREET

SHEET 10 OF 17  
CITY DRAWING NUMBER: D-13941