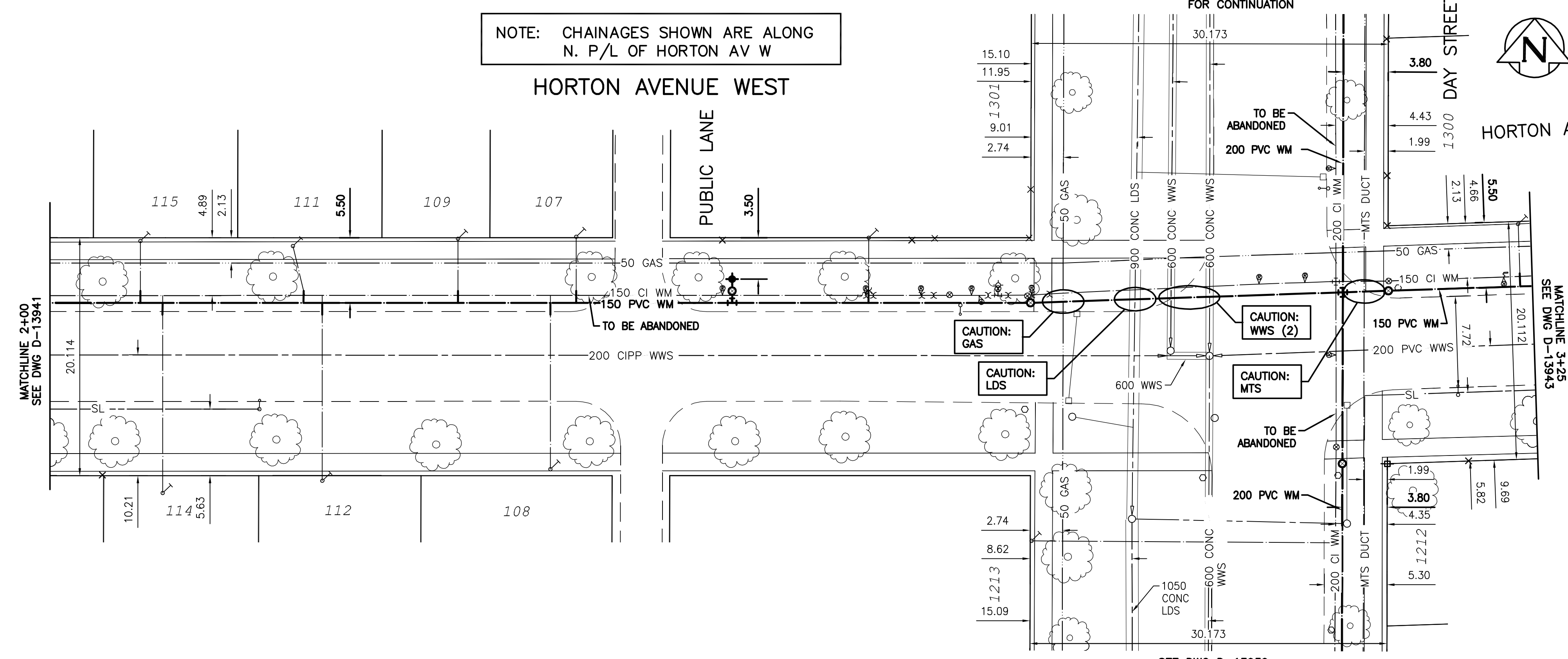


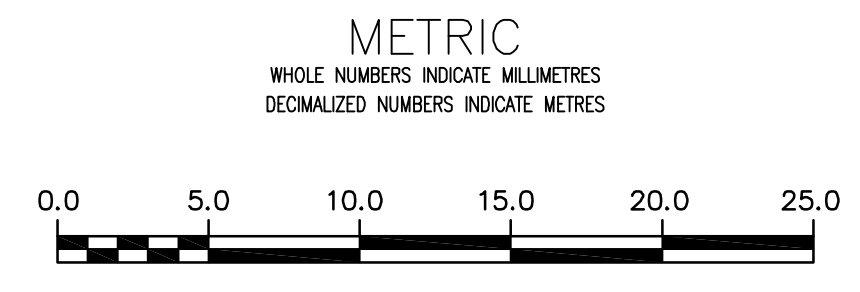
WATER SERVICE INFORMATION					
ADDRESS	SIZE (mm) MATERIAL (STREET)	SIZE (mm) MATERIAL (PROP.)	SHORT & LONG MEASUREMENT	CORP. LOCATION	REMARKS
115 HORTON AV W	-	-	2.32 EWL OF HSE	-	RECONNECT SERVICE
RESIDENTIAL	-	-	6.40 FROM HSE FRONT	-	-
114 HORTON AV W	-	-	3.35 EWL OF HSE	-	RECONNECT SERVICE
RESIDENTIAL	-	-	5.97 FROM HSE FRONT	-	-
112 HORTON AV W	-	-	4.15 EWL OF HSE	-	RECONNECT SERVICE
RESIDENTIAL	-	-	7.50 FROM HSE FRONT	-	-
111 HORTON AV W	-	-	2.32 EWL OF HSE	OPP S/C	RECONNECT SERVICE
RESIDENTIAL	-	-	4.88 FROM HSE FRONT	-	-
108 HORTON AV W	-	-	1.22 EWL OF HSE	-	RECONNECT SERVICE
RESIDENTIAL	-	-	3.98 FROM HSE FRONT	-	-
108 HORTON AV W	-	-	2.32 WEL OF HSE	-	RECONNECT SERVICE
RESIDENTIAL	-	-	6.40 FROM HSE FRONT	-	-
107 HORTON AV W	-	-	5.79 EWL OF HSE	-	RECONNECT SERVICE
RESIDENTIAL	-	-	4.45 FROM HSE FRONT	-	-
1213 DAY ST	-	-	1.52 NSL OF HSE	-	RECONNECT SERVICE
RESIDENTIAL	-	-	2.74 WEL OF HSE	-	RECONNECT SERVICE
1212 DAY ST	-	-	4.27 FROM HSE FRONT	-	-
RESIDENTIAL	-	-	2.93 EWL OF HSE	-	RECONNECT SERVICE
1300 DAY ST	-	-	3.35 FROM HSE FRONT	-	-
RESIDENTIAL	16	16	3.35 EWL OF HSE	6.10 WEL HSE	RECONNECT SERVICE
1301 DAY ST	-	-	4.88 FROM HSE FRONT	-	-

* SERVICES TO BE RENEWED TO R, ALL OTHERS TO BE RECONNECTED

NOTE: CHAINAGES SHOWN ARE ALONG N. P/L OF HORTON AV W



NOTE: ALL GATE VALVES TO BE INSTALLED CLOCKWISE TO CLOSE



WARNING
 IF POWER EQUIPMENT OR EXPLOSIVES ARE TO BE USED FOR EXCAVATION ON THIS PROJECT THE CONTRACTOR MUST:
 1) NOTIFY THE GAS COMPANY OF THE PROPOSED LOCATION OF EXCAVATION.
 2) TAKE PRECAUTION TO AVOID DAMAGE TO GAS COMPANY INSTALLATIONS.
 SEE PROVINCIAL REGULATION 21072 FOR DETAILS

LOCATION APPROVED
 UNDERGROUND STRUCTURES
 SUPV. U/G STRUCTURES COMMITTEE DATE
 NOTE:
 LOCATION OF UNDERGROUND STRUCTURES AS SHOWN ARE BASED ON THE BEST INFORMATION AVAILABLE BUT NO GUARANTEE IS GIVEN THAT ALL EXISTING UTILITIES ARE SHOWN OR THAT THE GIVEN LOCATIONS ARE EXACT. CONFIRMATION OF EXISTENCE AND EXACT LOCATION OF ALL SERVICES MUST BE OBTAINED FROM THE INDIVIDUAL UTILITIES BEFORE PROCEEDING WITH CONSTRUCTION.

B.M. 10-028 ELEV. 233.050m	879482 - S.E. Cor. McMeane Ave. W. & Winona St., Tbt. on top of 0.05 m sq x 2.4 m iron tube, 3.6 m W. of E.L. Winona St. & 5.0 m N. of S.L. McMeane Ave. W.		
CONSTRUCTION COMPLETION DATE: YYYY MM DD			
0	ISSUED FOR TENDER	15/03/25	J.C.
NO.	REVISIONS	DATE	BY

DESIGNED BY: J.H.
 CHECKED BY: J.C.
 DRAWN BY: J.H.
 APPROVED BY: J.C.
 SCALE:
 HORIZONTAL: 1:250
 VERTICAL: 1:50
 DATE: 2015 03 25
 PLOT DATE: 2015 03 25

ENGINEER'S SEAL
 CONSULTANT DRAWING NUMBER
C-210

THE CITY OF WINNIPEG
 WATER AND WASTE DEPARTMENT
 ENGINEERING DIVISION
 2015 WATERMAIN RENEWALS
 CONTRACT 2
HORTON AVENUE WEST
 100 EEL OF BOND STREET TO
 12 EEL OF DAY STREET

SHEET 11 OF 17
 CITY DRAWING NUMBER
D-13942