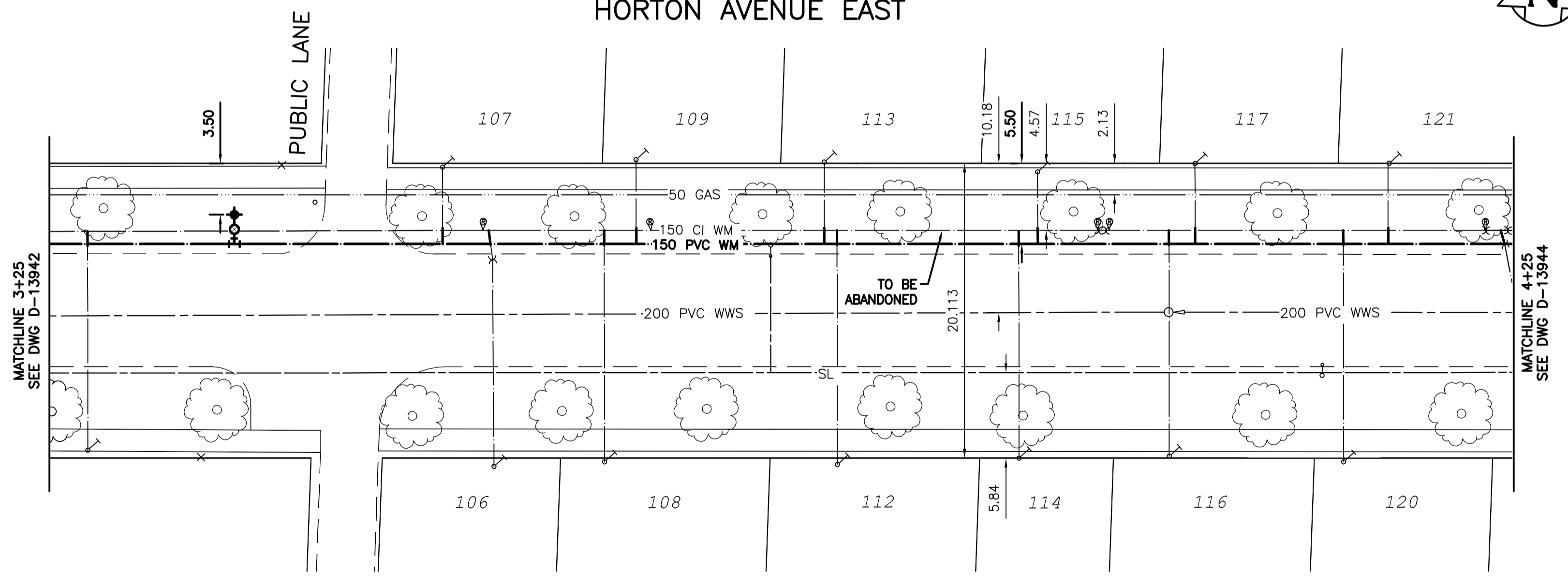


WATER SERVICE INFORMATION					
ADDRESS	SIZE (mm) MATERIAL (STREET)	SIZE (mm) MATERIAL (PROP.)	SHORT & LONG MEASUREMENT	CORP. LOCATION	REMARKS
106 HORTON AV E	20	20	3.0 WELL	2.0 W OF S/C	RECONNECT SERVICE
RESIDENTIAL	CU	CU	7.32 FROM HSE FRONT		
107 HORTON AV E			1.52 EWL OF HSE		RECONNECT SERVICE
RESIDENTIAL			7.62 FROM HSE FRONT		
108 HORTON AV E		20	1.71 EWL OF HSE		RECONNECT SERVICE
RESIDENTIAL		CU	7.92 FROM HSE FRONT		
109 HORTON AV E			0.91 WEL HSE		RECONNECT SERVICE
RESIDENTIAL			7.92 FROM HSE FRONT		
112 HORTON AV E			3.05 EWL OF HSE		RECONNECT SERVICE
RESIDENTIAL			3.66 FROM HSE FRONT		
113 HORTON AV E			1.83 EWL OF HSE		RECONNECT SERVICE
RESIDENTIAL			7.32 FROM HSE FRONT		
114 HORTON AV E		20	1.22 EWL HSE		RECONNECT SERVICE
RESIDENTIAL		CU			
115 HORTON AV E			2.13 EWL OF HSE	7.92 FROM	RECONNECT SERVICE
RESIDENTIAL			7.32 FROM HSE FRONT	HSE FRONT	
116 HORTON AV E			2.44 EWL OF HSE		RECONNECT SERVICE
RESIDENTIAL			7.32 FROM HSE FRONT		
117 HORTON AV E			0.30 EWL OF HSE		RECONNECT SERVICE
RESIDENTIAL			8.23 FROM HSE FRONT		
120 HORTON AV E			0.50 EWL OF HSE		RECONNECT SERVICE
RESIDENTIAL			7.32 FROM HSE FRONT		
121 HORTON AV E			2.32 EWL OF HSE		RECONNECT SERVICE
RESIDENTIAL			7.92 FROM HSE FRONT		

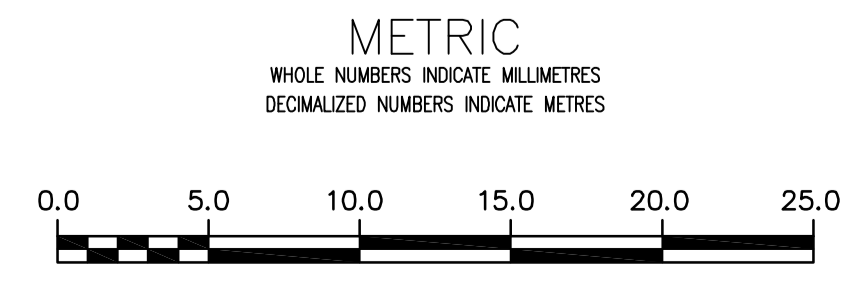
NOTE: CHAINAGES SHOWN ARE ALONG N. P/L OF HORTON AV E



*SERVICES TO BE RENEWED TO R. ALL OTHERS TO BE RECONNECTED



NOTE: ALL GATE VALVES TO BE INSTALLED CLOCKWISE TO CLOSE



WARNING
IF POWER EQUIPMENT OR EXPLOSIVES ARE TO BE USED FOR EXCAVATION ON THIS PROJECT THE CONTRACTOR MUST:
1) NOTIFY THE GAS COMPANY OF THE PROPOSED LOCATION OF EXCAVATION.
2) TAKE PRECAUTION TO AVOID DAMAGE TO GAS COMPANY INSTALLATIONS.
SEE PROVINCIAL REGULATION 21072 FOR DETAILS

LOCATION APPROVED
UNDERGROUND STRUCTURES
SUPV. U/G STRUCTURES COMMITTEE DATE
NOTE:
LOCATION OF UNDERGROUND STRUCTURES AS SHOWN ARE BASED ON THE BEST INFORMATION AVAILABLE BUT NO GUARANTEE IS GIVEN THAT ALL EXISTING UTILITIES ARE SHOWN OR THAT THE GIVEN LOCATIONS ARE EXACT. CONFIRMATION OF EXISTENCE AND EXACT LOCATION OF ALL SERVICES MUST BE OBTAINED FROM THE INDIVIDUAL UTILITIES BEFORE PROCEEDING WITH CONSTRUCTION.

B.M. 10-028 ELEV. 233.050m	879482 - S.E. Cor. McMeans Ave. W. & Winona St., Tbt. on top of 0.05 m sq x 2.4 m iron tube, 3.6 m W. of E.L. Winona St. & 5.0 m N. of S.L. McMeans Ave. W.		
CONSTRUCTION COMPLETION DATE: YYYY MM DD			
0	ISSUED FOR TENDER	15/03/25	J.C.
NO.	REVISIONS	DATE	BY

DESIGNED BY	J.H.	CHECKED BY	J.C.
DRAWN BY	J.H.	APPROVED BY	J.C.
SCALE:		RELEASED FOR CONSTRUCTION	
HORIZONTAL	1:250		
VERTICAL	1:50		
DATE	2015 03 25	DATE	

ENGINEER'S SEAL
CONSULTANT DRAWING NUMBER
C-211

THE CITY OF WINNIPEG
WATER AND WASTE DEPARTMENT
ENGINEERING DIVISION

2015 WATERMAIN RENEWALS
CONTRACT 2
HORTON AVENUE EAST
12 EEL OF DAY STREET TO
112 EEL OF DAY STREET

SHEET 12 OF 17
CITY DRAWING NUMBER
D-13943