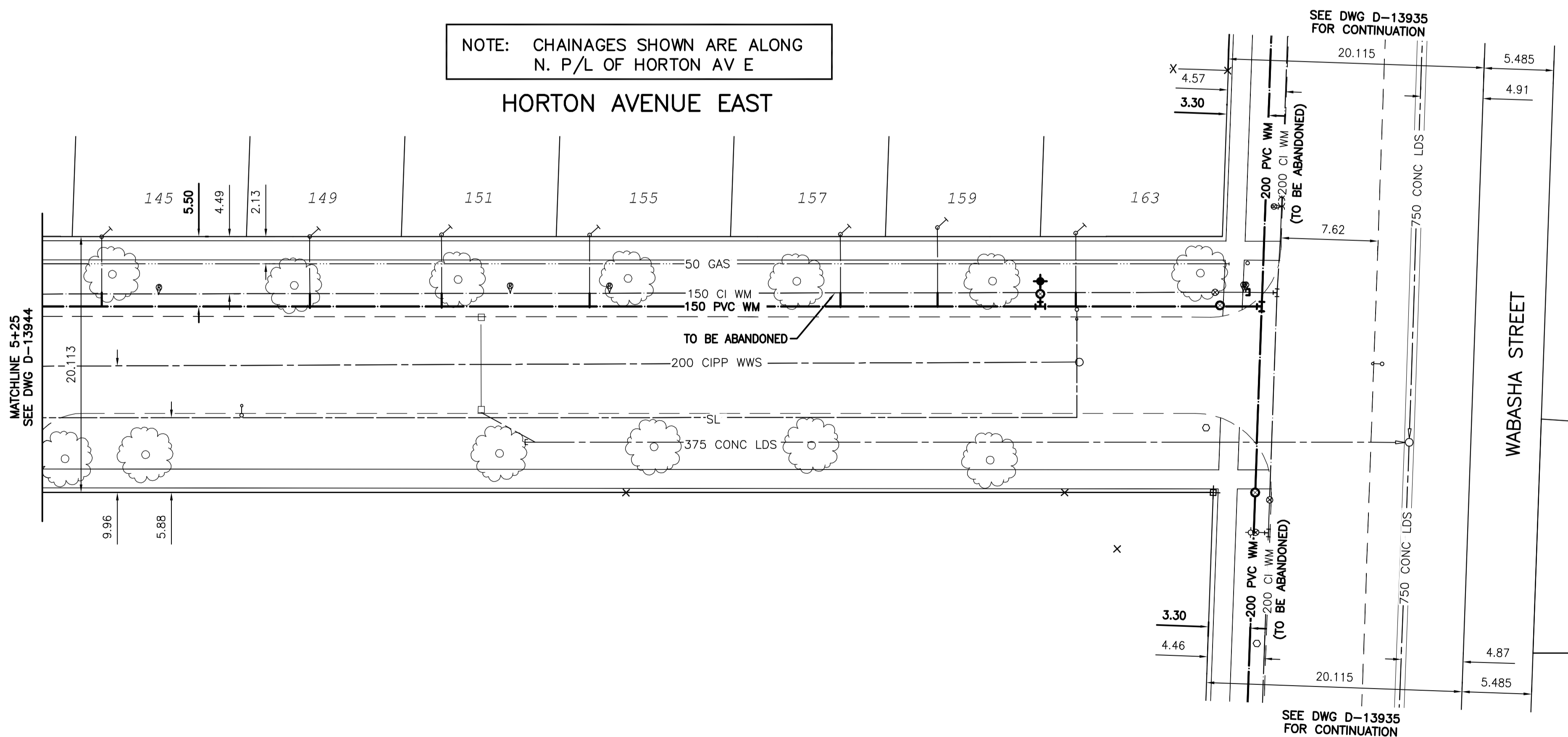


WATER SERVICE INFORMATION					
ADDRESS	SIZE (mm) MATERIAL (STREET)	SIZE (mm) MATERIAL (PROP.)	SHORT & LONG MEASUREMENT	CORP. LOCATION	REMARKS
145 HORTON AV E	-	-	1.10 EWL OF HSE	-	RECONNECT SERVICE
RESIDENTIAL	-	-	7.92 FROM HSE FRONT	-	-
149 HORTON AV E	-	-	3.35 EWL OF HSE	-	RECONNECT SERVICE
RESIDENTIAL	-	-	7.50 FROM HSE FRONT	-	-
151 HORTON AV E	-	-	7.62 WEL OF HSE	-	RECONNECT SERVICE
RESIDENTIAL	-	-	7.32 FROM HSE FRONT	-	-
155 HORTON AV E	-	-	1.40 EWL OF HSE	-	RECONNECT SERVICE
RESIDENTIAL	-	-	7.50 FROM HSE FRONT	-	-
157 HORTON AV E	-	-	1.83 WEL OF HSE	-	RECONNECT SERVICE
RESIDENTIAL	-	-	7.62 FROM HSE FRONT	-	-
159 HORTON AV E	-	-	2.13 EWL OF HSE	-	RECONNECT SERVICE
RESIDENTIAL	-	-	6.89 FROM HSE FRONT	-	-
163 HORTON AV E	-	-	0.79 EWL OF HSE	-	RECONNECT SERVICE
RESIDENTIAL	-	-	7.01 FROM HSE FRONT	-	-

\*SERVICES TO BE RENEWED TO P. ALL OTHERS TO BE RECONNECTED

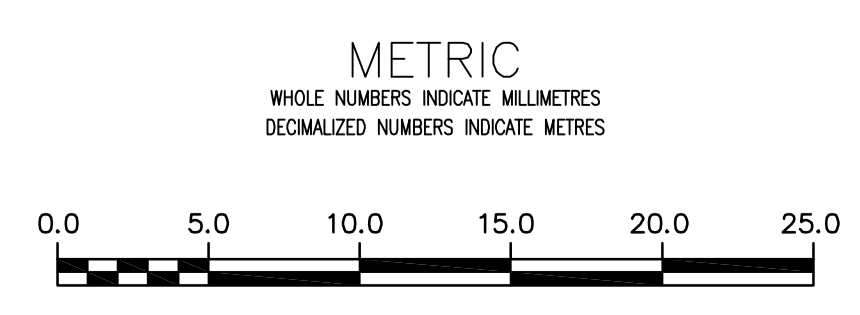


NOTE: CHAINAGES SHOWN ARE ALONG N. P/L OF HORTON AV E

HORTON AVENUE EAST

NOTE: ALL GATE VALVES TO BE INSTALLED CLOCKWISE TO CLOSE

**APEGN**  
Certificate of Authorization  
Stantec Consulting Ltd.  
No. 1301



**WARNING**

IF POWER EQUIPMENT OR EXPLOSIVES ARE TO BE USED FOR EXCAVATION ON THIS PROJECT THE CONTRACTOR MUST:

- 1) NOTIFY THE GAS COMPANY OF THE PROPOSED LOCATION OF EXCAVATION.
- 2) TAKE PRECAUTION TO AVOID DAMAGE TO GAS COMPANY INSTALLATIONS.

SEE PROVINCIAL REGULATION 210/72 FOR DETAILS

**LOCATION APPROVED**  
UNDERGROUND STRUCTURES

SUPV. U/G STRUCTURES COMMITTEE DATE

NOTE:  
LOCATION OF UNDERGROUND STRUCTURES AS SHOWN ARE BASED ON THE BEST INFORMATION AVAILABLE BUT NO GUARANTEE IS GIVEN THAT ALL EXISTING UTILITIES ARE SHOWN OR THAT THE GIVEN LOCATIONS ARE EXACT. CONFIRMATION OF EXISTENCE AND EXACT LOCATION OF ALL SERVICES MUST BE OBTAINED FROM THE INDIVIDUAL UTILITIES BEFORE PROCEEDING WITH CONSTRUCTION.

B.M. 10-028 ELEV. 233.050m	879482 - S.E. Cor. McMeane Ave. W. & Winona St., T411 on top of 0.05 m sq x 2.4 m iron tube, 3.6 m W. of E.L. Winona St. & 5.0 m N. of S.L. McMeane Ave. W.		
CONSTRUCTION COMPLETION DATE: YYYY MM DD			
0	ISSUED FOR TENDER	15/03/25	J.C.
NO.	REVISIONS	DATE	BY

DESIGNED BY: J.H. CHECKED BY: J.C.

DRAWN BY: J.H. APPROVED BY: J.C.

SCALE:  
HORIZONTAL: 1:250  
VERTICAL: 1:50

DATE: 2015 03 25

PLOT DATE: 2015 03 25

ENGINEER'S SEAL

CONSULTANT DRAWING NUMBER: C-213

**THE CITY OF WINNIPEG**  
WATER AND WASTE DEPARTMENT  
ENGINEERING DIVISION

2015 WATERMAIN RENEWALS  
CONTRACT 2  
HORTON AVENUE EAST  
93 WWL OF WABASHA STREET TO WABASHA STREET

SHEET 14 OF 17  
CITY DRAWING NUMBER: D-13945