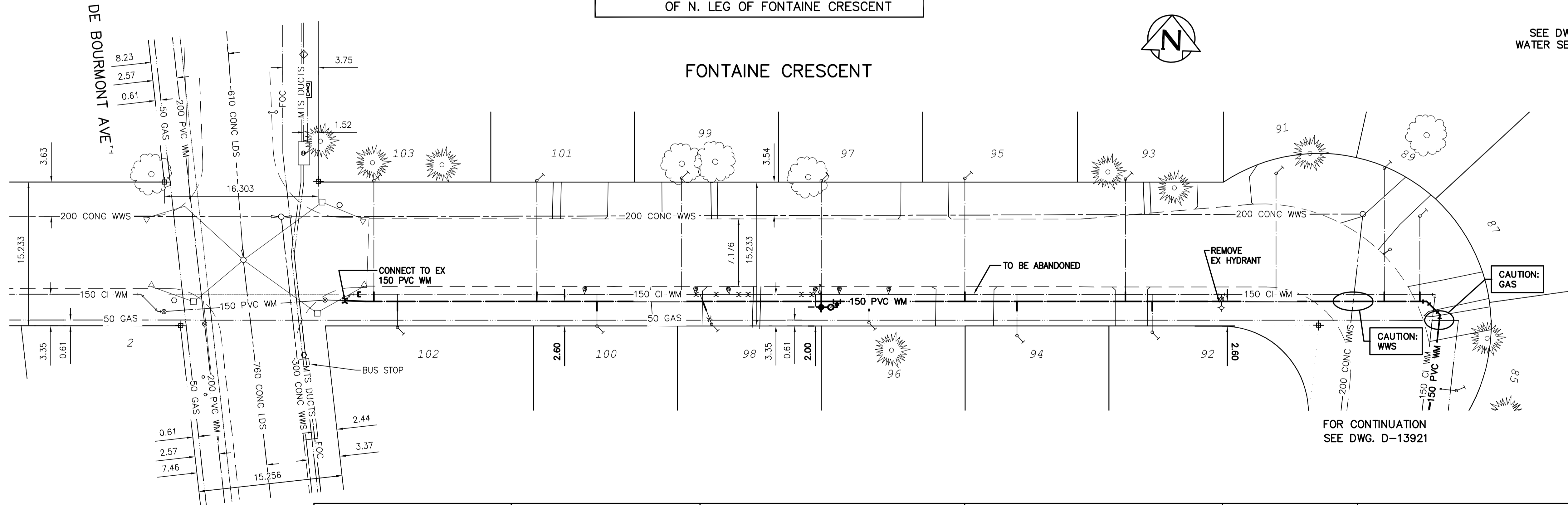


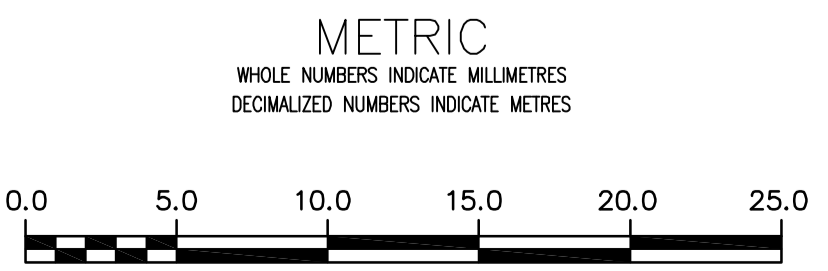
NOTE: CHAINAGES SHOWN ARE ALONG S. P/L OF N. LEG OF FONTAINE CRESCENT

SEE DWG. D-13921 FOR WATER SERVICE INFORMATION



NOTE: ALL GATE VALVES TO BE INSTALLED CLOCKWISE TO CLOSE

APEGN
Certificate of Authorization
Stantec Consulting Ltd.
No. 1301



WARNING
IF POWER EQUIPMENT OR EXPLOSIVES ARE TO BE USED FOR EXCAVATION ON THIS PROJECT THE CONTRACTOR MUST:
1) NOTIFY THE GAS COMPANY OF THE PROPOSED LOCATION OF EXCAVATION.
2) TAKE PRECAUTION TO AVOID DAMAGE TO GAS COMPANY INSTALLATIONS.
SEE PROVINCIAL REGULATION 2107/2 FOR DETAILS

LOCATION APPROVED
UNDERGROUND STRUCTURES
SUPV. U/G STRUCTURES COMMITTEE DATE
NOTE:
LOCATION OF UNDERGROUND STRUCTURES AS SHOWN ARE BASED ON THE BEST INFORMATION AVAILABLE BUT NO GUARANTEE IS GIVEN THAT ALL EXISTING UTILITIES ARE SHOWN OR THAT THE GIVEN LOCATIONS ARE EXACT. CONFIRMATION OF EXISTENCE AND EXACT LOCATION OF ALL SERVICES MUST BE OBTAINED FROM THE INDIVIDUAL UTILITIES BEFORE PROCEEDING WITH CONSTRUCTION.

B.M. 55-007 ELEV. 231.996m	S. side Autumnwood Dr. E. of Barbary Rd., T16, in N. City, Intersection of Fontaine Crescent, No. 888 Autumnwood Dr. 0.4 m E. & 0.3 m below brick of N.W. Cor. of main entrance to school.		
CONSTRUCTION COMPLETION DATE: YYYY MM DD			
0	ISSUED FOR TENDER	15/03/24	R.S.
NO.	REVISIONS	DATE	BY

Stantec

DESIGNED BY	J.H.	CHECKED BY	R.S.
DRAWN BY	J.H.	APPROVED BY	R.S.
SCALE:		RELEASED FOR CONSTRUCTION	
HORIZONTAL	1:250	DATE	2015 03 24
VERTICAL	1:50	DATE	

ENGINEER'S SEAL
CONSULTANT DRAWING NUMBER
C-205

THE CITY OF WINNIPEG
WATER AND WASTE DEPARTMENT
ENGINEERING DIVISION

2015 WATERMAIN RENEWALS
CONTRACT 1
FONTAINE CRESCENT
DE BOURMONT AVENUE TO
85 EEL OF BOURMONT AVENUE

SHEET **6** OF **18**
CITY DRAWING NUMBER
D-13920