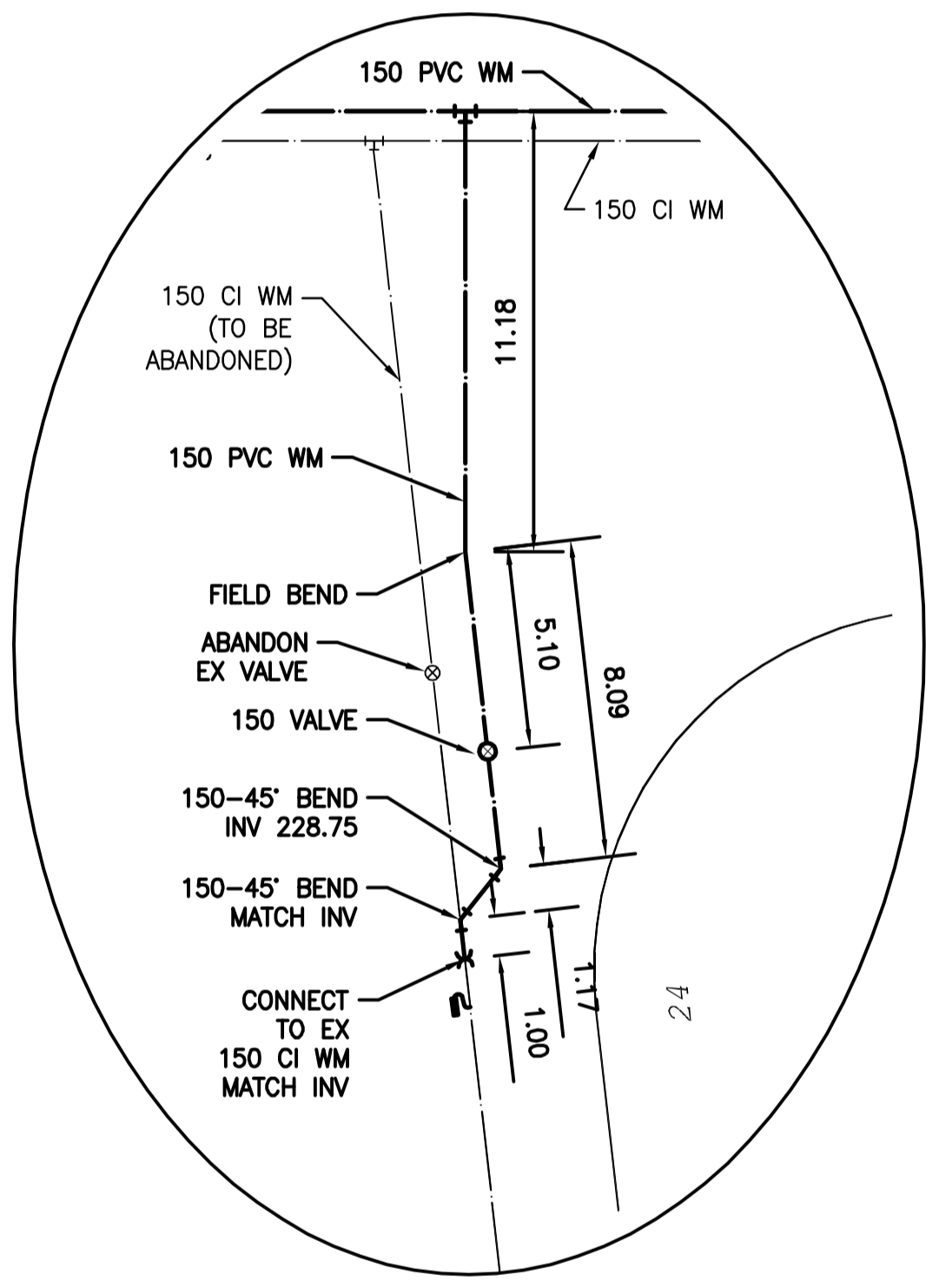


WATER SERVICE INFORMATION					
ADDRESS	SIZE (mm) MATERIAL (STREET)	SIZE (mm) MATERIAL (PROP.)	SHORT & LONG MEASUREMENT	CORP. LOCATION	REMARKS
103 FONTAINE CR RESIDENTIAL	-	20 CU	1.83 RL CR OF HSE	-	RECONNECT SERVICE
102 FONTAINE CR RESIDENTIAL	-	20 CU	1.83 RL CR OF HSE	-	RECONNECT SERVICE
101 FONTAINE CR RESIDENTIAL	-	20 CU	3.05 RL CR OF HSE	-	RECONNECT SERVICE
99 FONTAINE CR RESIDENTIAL	-	20 CU	3.05 LR CR OF HSE	-	RECONNECT SERVICE
98 FONTAINE CR RESIDENTIAL	-	20 CU	1.83 RL CR OF HSE	-	RECONNECT SERVICE
97 FONTAINE CR RESIDENTIAL	-	20 CU	0.46 LR CR OF HSE	-	RECONNECT SERVICE
96 FONTAINE CR RESIDENTIAL	-	20 CU	2.74 RL CR OF HSE	-	RECONNECT SERVICE
95 FONTAINE CR RESIDENTIAL	-	20 CU	5.0 EWBL	-	RECONNECT SERVICE
94 FONTAINE CR RESIDENTIAL	-	20 CU	1.52 RL CR OF HSE	-	RECONNECT SERVICE
93 FONTAINE CR RESIDENTIAL	-	20 CU	2.13 LR CR OF HSE	-	RECONNECT SERVICE
92 FONTAINE CR RESIDENTIAL	-	20 CU	2.90 RL CR OF HSE	-	RECONNECT SERVICE
91 FONTAINE CR RESIDENTIAL	-	20 CU	1.83 LR CR OF HSE	-	RECONNECT SERVICE
89 FONTAINE CR RESIDENTIAL	-	20 CU	2.44 RL CR OF HSE	-	RECONNECT SERVICE
87 FONTAINE CR RESIDENTIAL	-	20 CU	xxx xlx xxxxxxxxxx	-	RECONNECT SERVICE
85 FONTAINE CR RESIDENTIAL	-	20 CU	1.37 LR CR OF HSE	-	RECONNECT SERVICE
83 FONTAINE CR RESIDENTIAL	-	20 CU	2.9m N SLL	-	RECONNECT SERVICE
81 FONTAINE CR RESIDENTIAL	-	20 CU	4.57 LR CR OF HSE	-	RECONNECT SERVICE
79 FONTAINE CR RESIDENTIAL	-	20 CU	1.83 LR CR OF HSE	-	RECONNECT SERVICE
77 FONTAINE CR RESIDENTIAL	-	20 CU	0.76 LR CR OF HSE	-	RECONNECT SERVICE
75 FONTAINE CR RESIDENTIAL	-	20 CU	1.22 LR CR OF HSE	-	RECONNECT SERVICE
73 FONTAINE CR RESIDENTIAL	-	20 CU	5.18 LR CR OF HSE	-	RECONNECT SERVICE
	-	20 CU	1.37 LR CR OF HSE	-	RECONNECT SERVICE
	-	20 CU	2.44 LR CR OF HSE	-	RECONNECT SERVICE

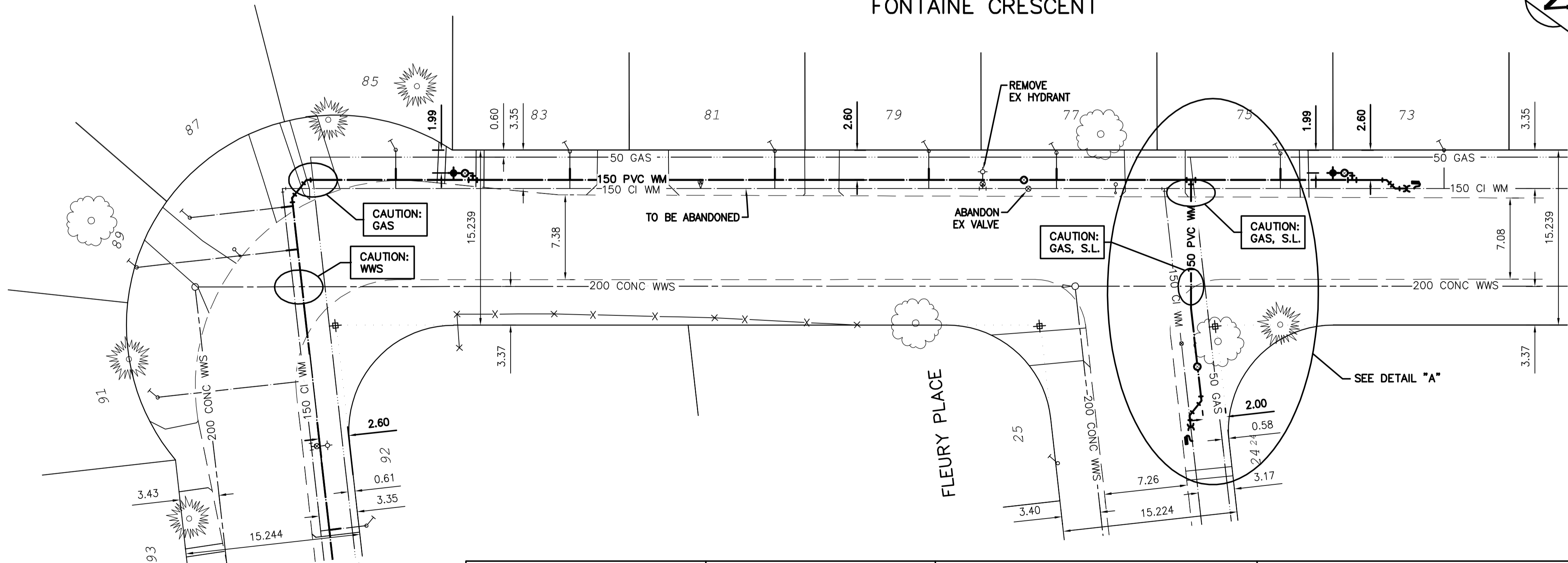
* SERVICES TO BE RENEWED TO R, ALL OTHERS TO BE RECONNECTED



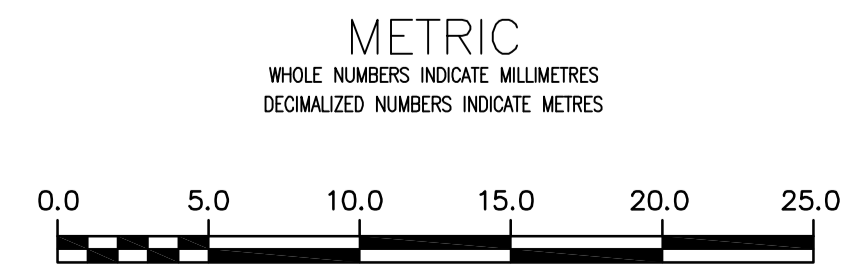
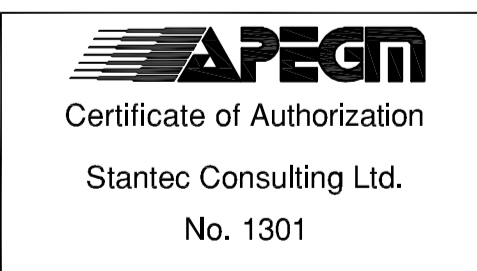
DETAIL "A" N.T.S.

NOTE: CHAINAGES SHOWN ARE ALONG E P/L OF E. LEG OF FONTAINE CR.

FONTAINE CRESCENT



NOTE: ALL GATE VALVES TO BE INSTALLED CLOCKWISE TO CLOSE



FOR CONTINUATION SEE DWG. D-13920

<p>WARNING</p> <p>IF POWER EQUIPMENT OR EXPLOSIVES ARE TO BE USED FOR EXCAVATION ON THIS PROJECT THE CONTRACTOR MUST:</p> <ol style="list-style-type: none"> NOTIFY THE GAS COMPANY OF THE PROPOSED LOCATION OF EXCAVATION. TAKE PRECAUTION TO AVOID DAMAGE TO GAS COMPANY INSTALLATIONS. <p>SEE PROVINCIAL REGULATION 2107/2 FOR DETAILS</p>	<p>LOCATION APPROVED</p> <p>UNDERGROUND STRUCTURES</p> <p>SUPV. U/G STRUCTURES COMMITTEE _____ DATE _____</p> <p>NOTE:</p> <p>LOCATION OF UNDERGROUND STRUCTURES AS SHOWN ARE BASED ON THE BEST INFORMATION AVAILABLE BUT NO GUARANTEE IS GIVEN THAT ALL EXISTING UTILITIES ARE SHOWN OR THAT THE GIVEN LOCATIONS ARE EXACT. CONFIRMATION OF EXISTENCE AND EXACT LOCATION OF ALL SERVICES MUST BE OBTAINED FROM THE INDIVIDUAL UTILITIES BEFORE PROCEEDING WITH CONSTRUCTION.</p>	<p>B.M. 55-007</p> <p>ELEV. 231.996m</p> <p>CONSTRUCTION COMPLETION DATE: YYYY MM DD</p>		<p>ENGINEER'S SEAL</p>
		<p>DESIGNED BY J.H.</p> <p>CHECKED BY R.S.</p> <p>DRAWN BY J.H.</p> <p>APPROVED BY R.S.</p> <p>SCALE:</p> <p>HORIZONTAL 1:250</p> <p>VERTICAL 1:50</p> <p>DATE 2015 03 24</p> <p>PLOT DATE: 2015 03 24</p>		

<p>THE CITY OF WINNIPEG</p> <p>WATER AND WASTE DEPARTMENT</p> <p>ENGINEERING DIVISION</p>	<p>2015 WATERMAIN RENEWALS</p> <p>CONTRACT 1</p> <p>FONTAINE CRESCENT</p> <p>85 EEL OF DU BOURMONT AVE TO 17 SSL OF FLEURY PL.</p>	<p>SHEET 7 OF 18</p> <p>CITY DRAWING NUMBER</p>
		<p>D-13921</p>