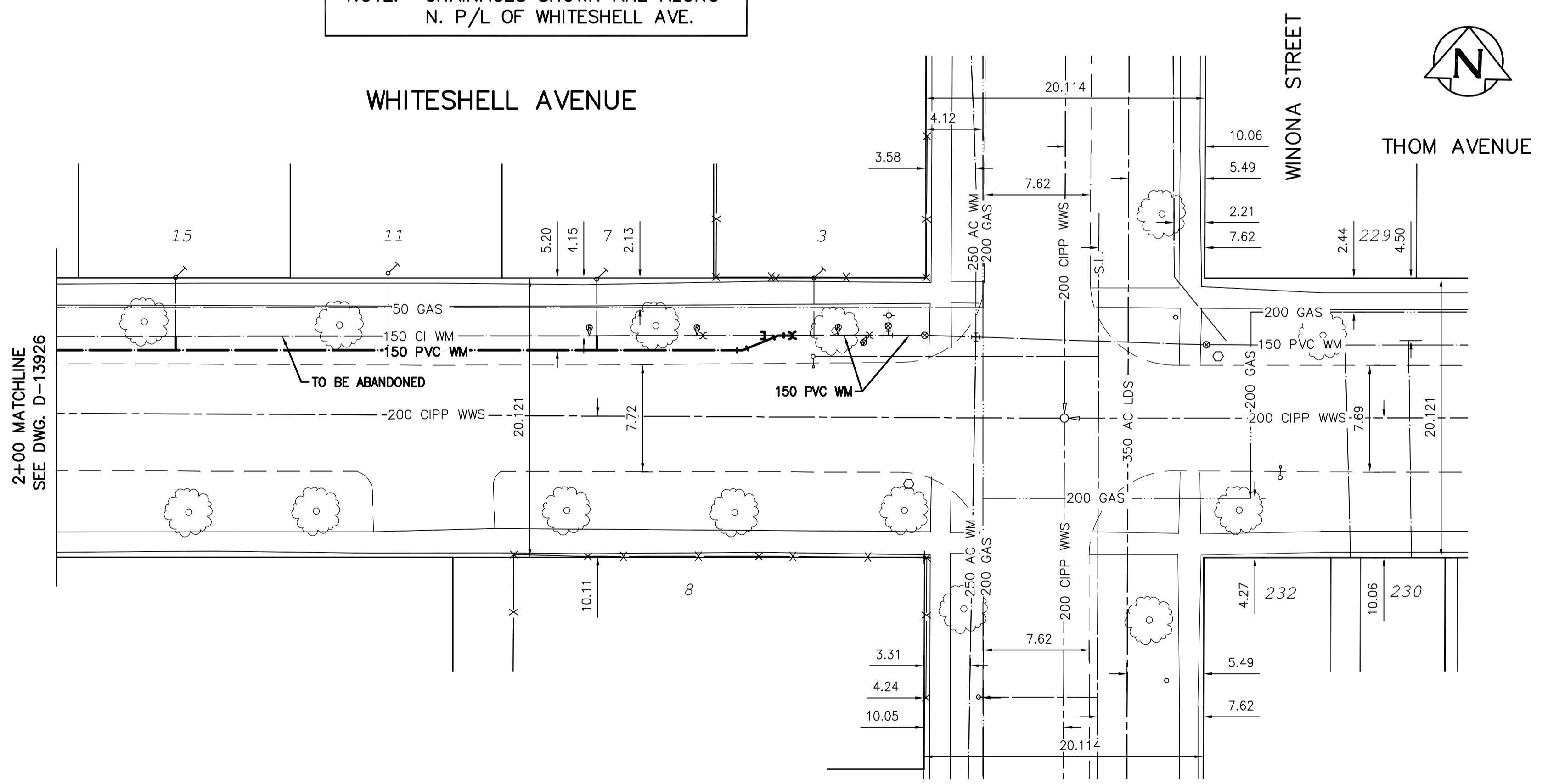


NOTE: CHAINAGES SHOWN ARE ALONG N. P/L OF WHITESHELL AVE.

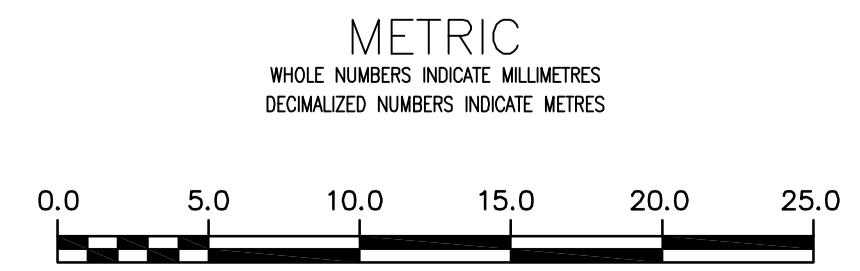


WATER SERVICE INFORMATION

ADDRESS	SIZE (mm) MATERIAL (STREET)	SIZE (mm) MATERIAL (PROP.)	SHORT & LONG MEASUREMENT	CORP. LOCATION	REMARKS
15 WHITESHELL AV RESIDENTIAL	-	20 CU	-	-	RECONNECT SERVICE
11 WHITESHELL AV RESIDENTIAL	-	20 CU	-	-	RECONNECT SERVICE
8 WHITESHELL AV RESIDENTIAL	-	20 CU	2.78' SNL HSE	-	SERVICED OFF WINONA
7 WHITESHELL AV RESIDENTIAL	-	20 CU	-	-	RECONNECT SERVICE
3 WHITESHELL AV RESIDENTIAL	20 CU	20 CU	3.20 WEL HSE 7.92 FROM HSE	-	-

* SERVICES TO BE RENEWED TO R, ALL OTHERS TO BE RECONNECTED

NOTE: ALL GATE VALVES TO BE INSTALLED CLOCKWISE TO CLOSE



WARNING
IF POWER EQUIPMENT OR EXPLOSIVES ARE TO BE USED FOR EXCAVATION ON THIS PROJECT THE CONTRACTOR MUST:
1) NOTIFY THE GAS COMPANY OF THE PROPOSED LOCATION OF EXCAVATION.
2) TAKE PRECAUTION TO AVOID DAMAGE TO GAS COMPANY INSTALLATIONS.
SEE PROVINCIAL REGULATION 210/72 FOR DETAILS

LOCATION APPROVED
UNDERGROUND STRUCTURES
SUPV. U/G STRUCTURES COMMITTEE DATE
NOTE:
LOCATION OF UNDERGROUND STRUCTURES AS SHOWN ARE BASED ON THE BEST INFORMATION AVAILABLE BUT NO GUARANTEE IS GIVEN THAT ALL EXISTING UTILITIES ARE SHOWN OR THAT THE GIVEN LOCATIONS ARE EXACT. CONFIRMATION OF EXISTENCE AND EXACT LOCATION OF ALL SERVICES MUST BE OBTAINED FROM THE INDIVIDUAL UTILITIES BEFORE PROCEEDING WITH CONSTRUCTION.

B.M. 10-012 ELEV. 232.469m	N.W. Cor. McMeans Ave. W. & McMeans Bay, 19 mm dia. x 7.6 m I.B. in Valve Box, 3.0 m W. of W.L. of McMeans Bay & 3.0 m N. of N.L. of McMeans Ave. W.		
CONSTRUCTION COMPLETION DATE: YYYY MM DD			
0	ISSUED FOR TENDER	15/03/24	R.S.
NO.	REVISIONS	DATE	BY

DESIGNED BY: J.H. CHECKED BY: R.S.
DRAWN BY: J.H. APPROVED BY: R.S.
SCALE: HORIZONTAL 1:250 VERTICAL 1:50
RELEASED FOR CONSTRUCTION
DATE: 2015 03 24

ENGINEER'S SEAL
CONSULTANT DRAWING NUMBER
C-212

THE CITY OF WINNIPEG
WATER AND WASTE DEPARTMENT
ENGINEERING DIVISION
2015 WATERMAIN RENEWALS
CONTRACT 1
WHITESHELL AVENUE
4 EEL OF BERENS TO
WINONA STREET

SHEET 13 OF 18
CITY DRAWING NUMBER
D-13927