

0+81.84 REMOVE EXIST 200-150 REDUCER & 150 CI WM
 0+82.00 INSTALL 200-45° BEND
 0+82.66 INSTALL 200-45° BEND
 0+83.43 EXIST 150 COUPLING
 0+86.00 INSTALL 200 VALVE

1+16.00 INSTALL 200X200X150 HYDRANT TEE
 1+17.50 INSTALL HYDRANT (SD-007)

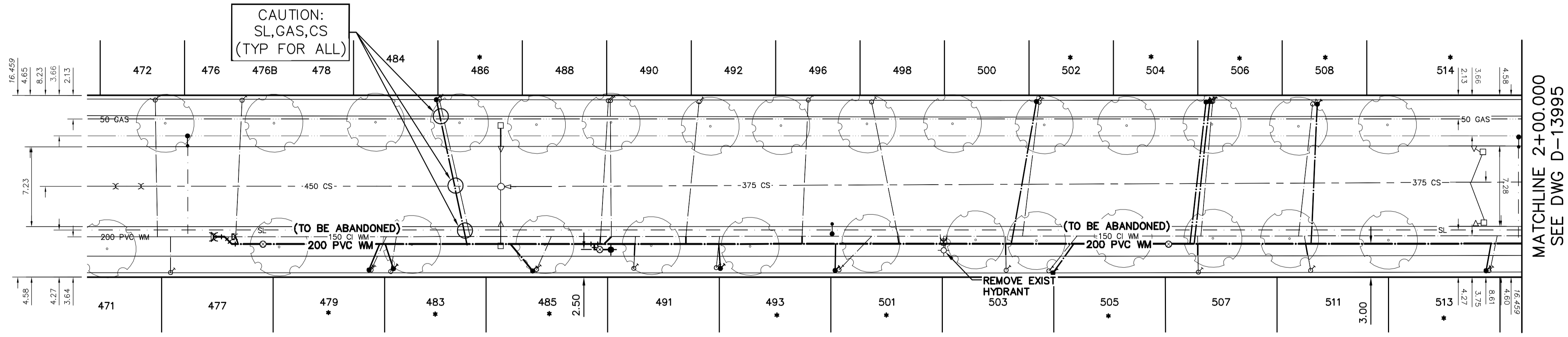
1+47.82 REMOVE EXIST HYDRANT ASSEMBLY

1+68.00 INSTALL 200 VALVE

NOTE: CHAINAGES SHOWN ARE ALONG E. R.L. OF BEVERLEY STREET

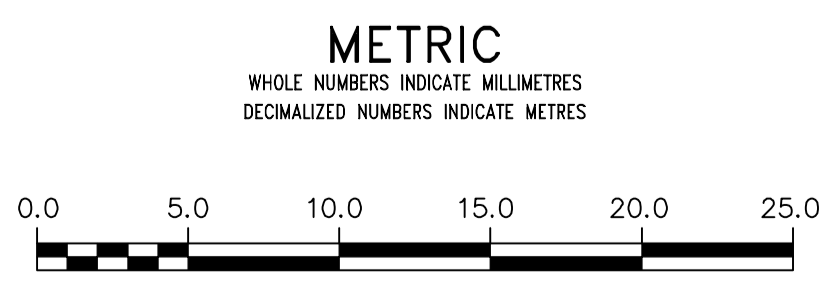


BEVERLEY STREET



VALVES COUNTER-CLOCKWISE TO CLOSE (RED OPERATING NUT)

FOR INDEX SEE D-13993



WARNING
 IF POWER EQUIPMENT OR EXPLOSIVES ARE TO BE USED FOR EXCAVATION ON THIS PROJECT THE CONTRACTOR MUST:
 1) NOTIFY THE GAS COMPANY OF THE PROPOSED LOCATION OF EXCAVATION.
 2) TAKE PRECAUTION TO AVOID DAMAGE TO GAS COMPANY INSTALLATIONS.
 SEE PROVINCIAL REGULATION 210/72 FOR DETAILS

LOCATION APPROVED UNDERGROUND STRUCTURES
 SUPV. U/G STRUCTURES COMMITTEE DATE
 NOTE:
 LOCATION OF UNDERGROUND STRUCTURES AS SHOWN ARE BASED ON THE BEST INFORMATION AVAILABLE BUT NO GUARANTEE IS GIVEN THAT ALL EXISTING UTILITIES ARE SHOWN OR THAT THE GIVEN LOCATIONS ARE EXACT. CONFIRMATION OF EXISTENCE AND EXACT LOCATION OF ALL UTILITIES MUST BE OBTAINED FROM THE INDIVIDUAL UTILITIES BEFORE PROCEEDING WITH CONSTRUCTION.

| | | | |
|------------|-----------|--|----|
| B.M. ELEV. | | CONSTRUCTION COMPLETION DATE: YYYY MM DD | |
| NO. | REVISIONS | DATE | BY |
| | | | |

| | | | |
|-------------|------------|---------------------------|----|
| DESIGNED BY | MJK | CHECKED BY | SC |
| DRAWN BY | RS | APPROVED BY | KZ |
| SCALE: | | | |
| HORIZONTAL | 1:250 | RELEASED FOR CONSTRUCTION | |
| VERTICAL | 1:50 | DATE | |
| DATE | 2015 05 07 | DATE | |

ENGINEER'S SEAL
 ORIGINAL SIGNED BY S.R.J. COURNOYER
 15/05/07
 CONSULTANT DRAWING NUMBER

THE CITY OF WINNIPEG
 WATER AND WASTE DEPARTMENT
 ENGINEERING DIVISION
 2015 WATERMAIN RENEWALS
 BEVERLEY STREET
 49 N OF ELLICE AVE TO
 179 N OF ELLICE AVENUE
 SHEET 2 OF 10
 CITY DRAWING NUMBER
 D-13994