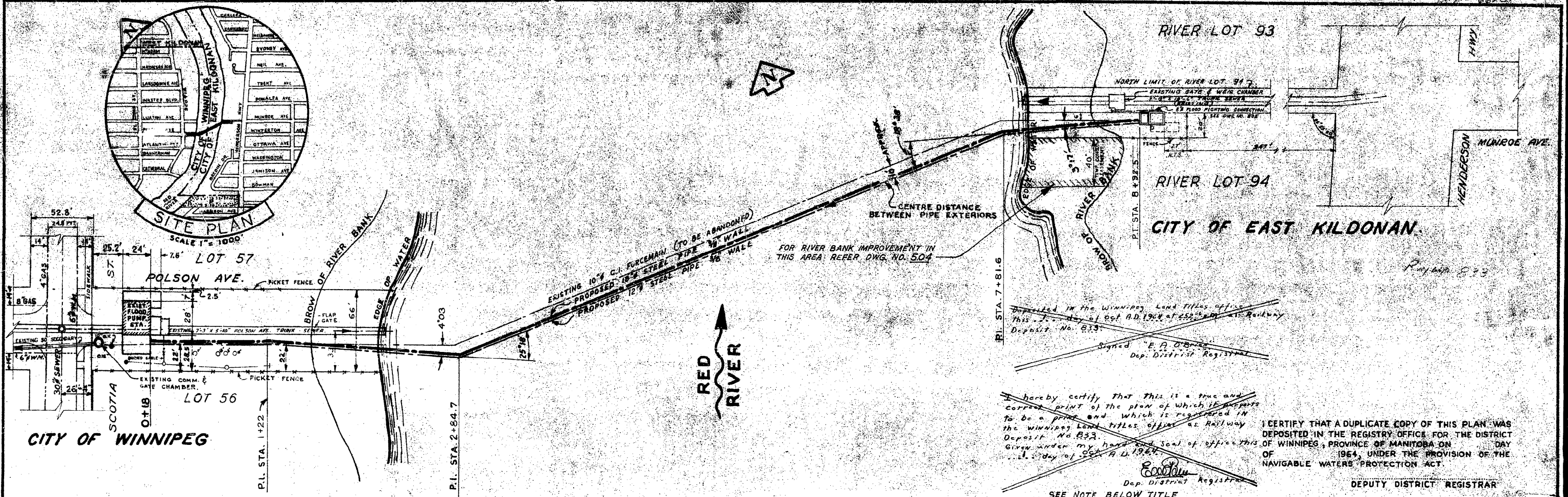


Appendix A
Record Drawings

Doc. 663

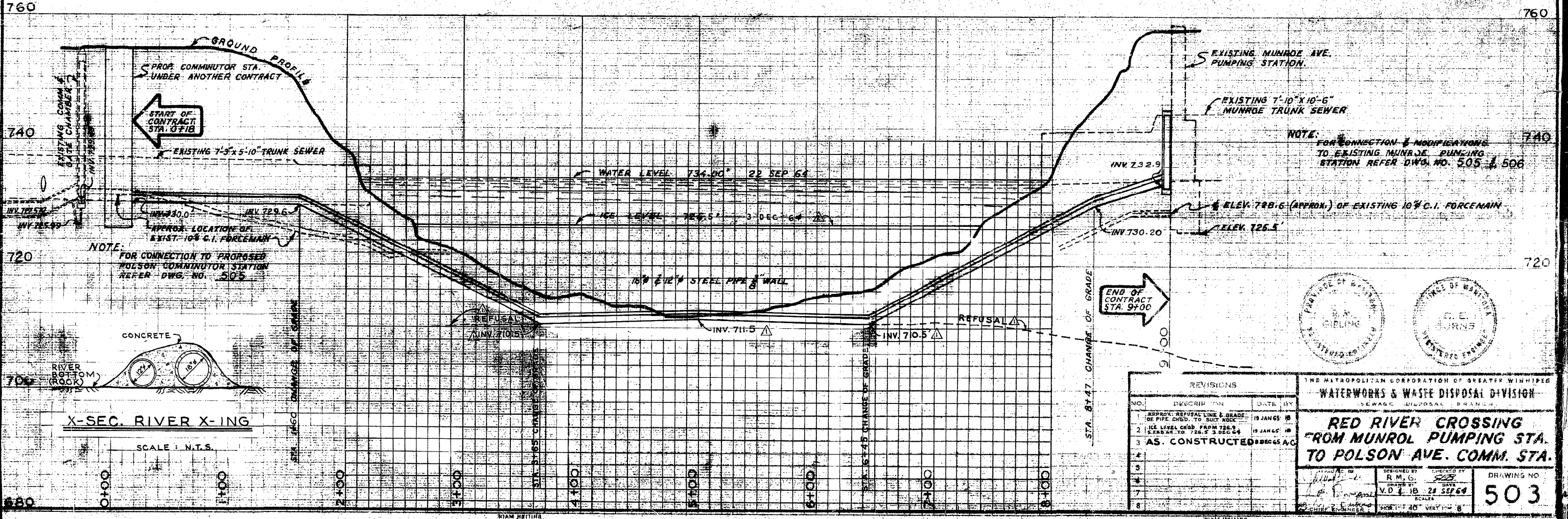


Deposited in the Winnipeg Land Titles Office
 This 21st day of Oct. A.D. 1964 at 4:52 P.M. as Railway
 Deposit No. 833.
 Signed "E. A. O'Brien"
 Dep. District Registrar

hereby certify that this is a true and
 correct print of the plan of which it appears
 to be a print and which is registered in
 the Winnipeg Land Titles Office as Railway
 Deposit No. 833.
 Given under my hand and seal of office this
 21st day of Oct. A.D. 1964.
 E. A. O'Brien
 Dep. District Registrar

SEE NOTE BELOW TITLE.

I CERTIFY THAT A DUPLICATE COPY OF THIS PLAN WAS
 DEPOSITED IN THE REGISTRY OFFICE FOR THE DISTRICT
 OF WINNIPEG, PROVINCE OF MANITOBA ON _____ DAY
 OF _____ 1964, UNDER THE PROVISION OF THE
 NAVIGABLE WATERS PROTECTION ACT.
 DEPUTY DISTRICT REGISTRAR



X-SEC. RIVER X-ING
 SCALE: N.T.S.

| REVISIONS | | | |
|-----------|---|-----------|----|
| NO. | DESCRIPTION | DATE | BY |
| 1 | APPROX. REFUSAL LINE & GRADE OF PIPE CHGD. TO SUIT ROCK | 19 JAN 65 | IB |
| 2 | ICE LEVEL CHGD. FROM 726.3 TO 725.5 | 19 JAN 65 | IB |
| 3 | AS CONSTRUCTED | 28 SEP 64 | AG |
| 4 | | | |
| 5 | | | |
| 6 | | | |
| 7 | | | |
| 8 | | | |

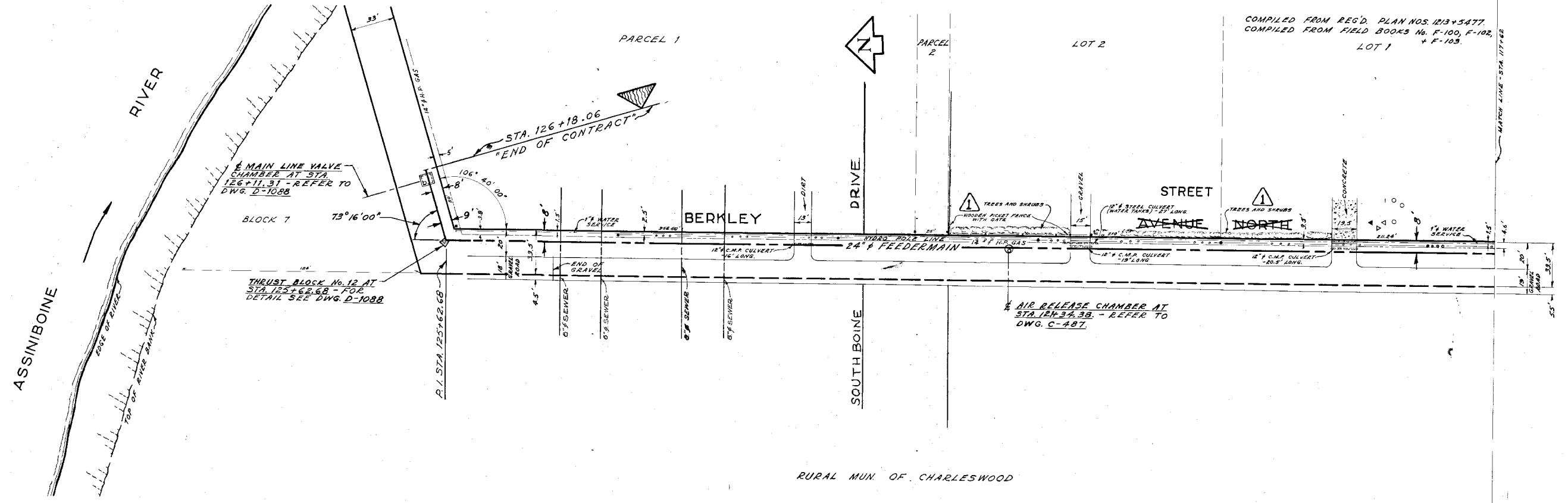
THE METROPOLITAN CORPORATION OF GREATER WINNIPEG
 WATERWORKS & WASTE DISPOSAL DIVISION
 SEWAGE DISPOSAL BRANCH

RED RIVER CROSSING FROM MUNROE PUMPING STA. TO POLSON AVE. COMM. STA.

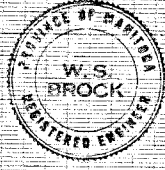
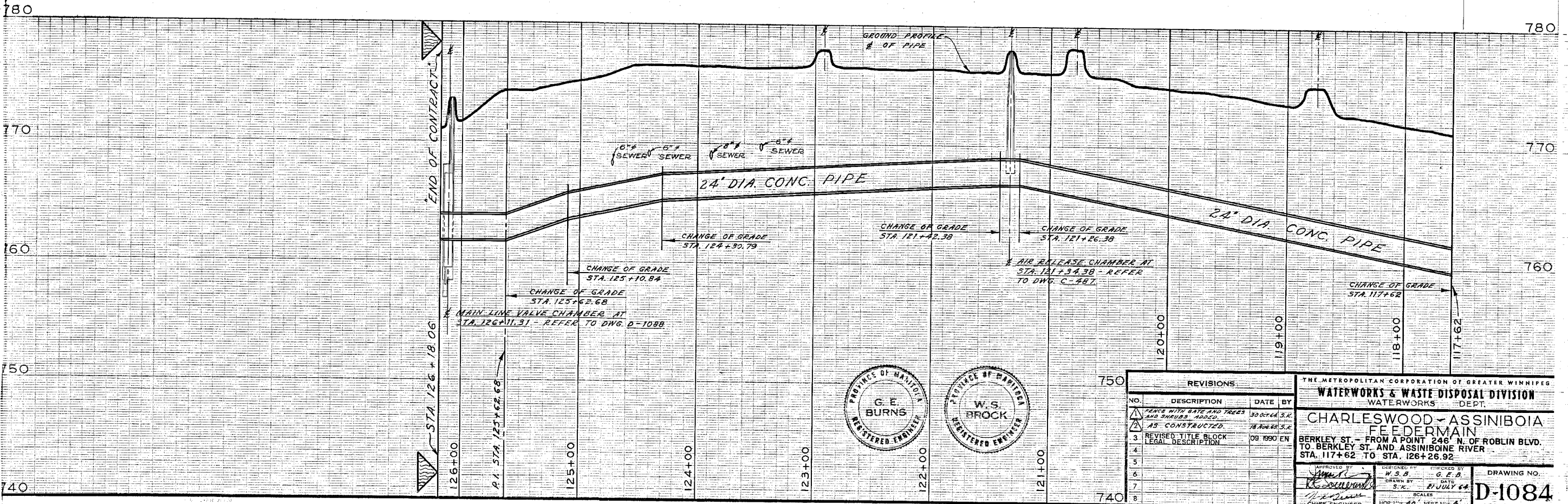
DESIGNED BY: R. M. G.
 CHECKED BY: V. D. J. IB
 DATE: 28 SEP 64
 SCALE: 1" = 40' VERT. 1" = 8'

DRAWING NO. **503**

NOTE: FOR REGD. PLAN ORIGINAL, NEED WITH WINNIPEG LAND TITLES-OF DEPT. OF PUBLIC WORKS OF C.W.A. SEE SEPIA OF DWG. NO. 503



RURAL MUN. OF CHARLESWOOD



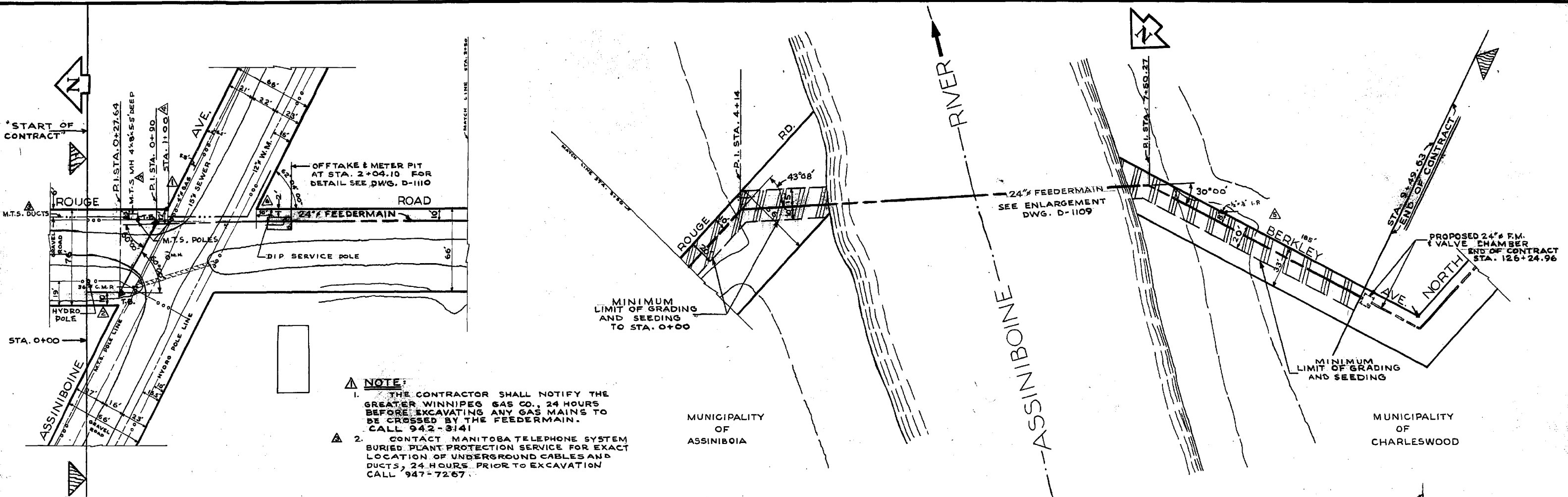
| REVISIONS | | |
|-----------|---|----------------|
| NO. | DESCRIPTION | DATE BY |
| 1 | FENCE WITH GATE AND TREES AND SHRUBS ADDED. | 30 OCT 64 S.K. |
| 2 | AS CONSTRUCTED. | 18 AUG 68 S.K. |
| 3 | REVISED TITLE BLOCK LEGAL DESCRIPTION | 09 1990 EN |
| 4 | | |
| 5 | | |
| 6 | | |
| 7 | | |
| 8 | | |

THE METROPOLITAN CORPORATION OF GREATER WINNIPEG
WATERWORKS & WASTE DISPOSAL DIVISION
 WATERWORKS DEPT.
CHARLESWOOD - ASSINIBOIA FEEDERMAIN
 BERKLEY ST. - FROM A POINT 246' N. OF ROBLIN BLVD. TO BERKLEY ST. AND ASSINIBOINE RIVER STA. 117+62 TO STA. 126+26.92

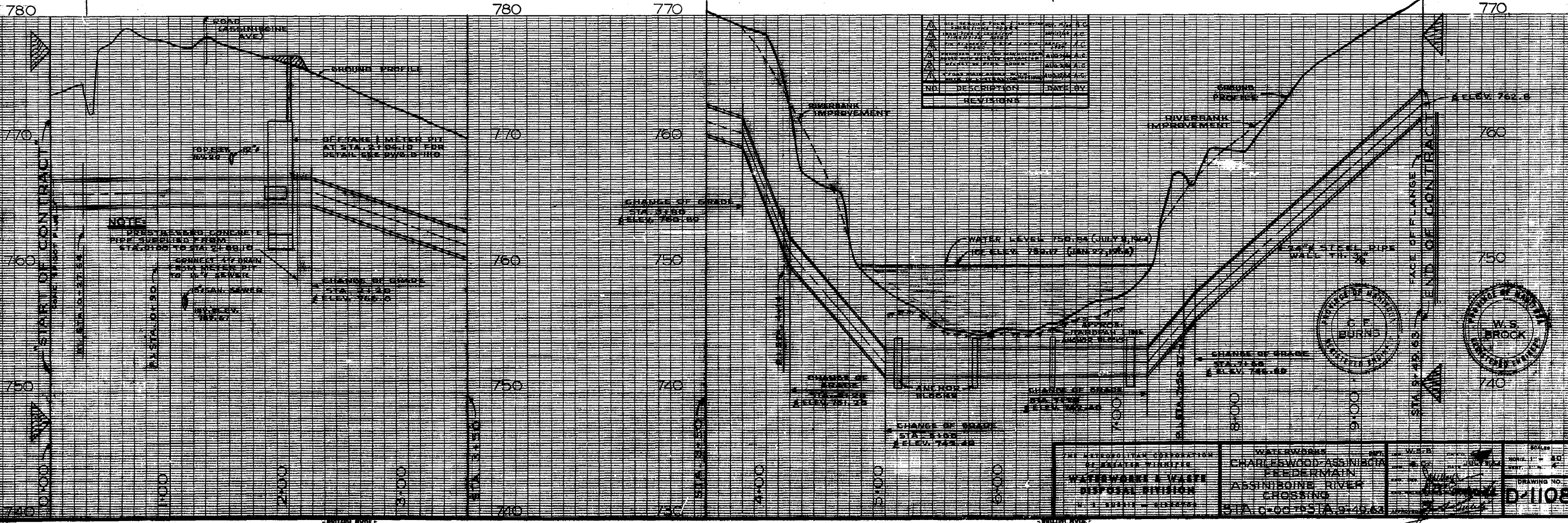
DESIGNED BY: W.S.B. G.E.B.
 DRAWN BY: S.K. DATE: 21 JULY 64
 SCALES: HORIZ. 40' VERT. 1" = 4'

APPROVED BY: [Signature] CHIEF ENGINEER

DRAWING NO. **D-1084**



- NOTE:**
1. THE CONTRACTOR SHALL NOTIFY THE GREATER WINNIPEG GAS CO., 24 HOURS BEFORE EXCAVATING ANY GAS MAINS TO BE CROSSED BY THE FEEDERMAIN. CALL 942-3141
 2. CONTACT MANITOBA TELEPHONE SYSTEM BURIED PLANT PROTECTION SERVICE FOR EXACT LOCATION OF UNDERGROUND CABLES AND DUCTS, 24 HOURS PRIOR TO EXCAVATION CALL 947-7267

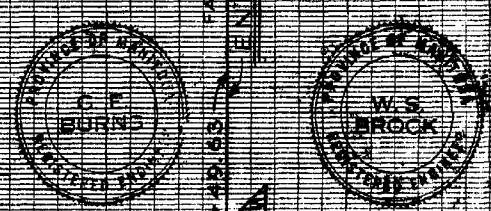


| NO. | DESCRIPTION | DATE BY |
|-----|-------------|---------|
| 1 | REVISIONS | |

NOTES:

1. PREPARED CONCRETE PIPE SUBMITTED FROM STA. 0+00 TO STA. 3+00

2. CONNECT FEEDER MAIN TO 12\"/>



| | | |
|---|--|---|
| THE METROPOLITAN CORPORATION OF GREATER WINNIPEG WATERWORKS & WASTE DISPOSAL DIVISION H. J. BURTON - DIRECTOR | WATERWORKS CHARLESWOOD-ASSINIBOIA FEEDERMAIN ASSINIBOINE RIVER CROSSING STA. 0+00 TO STA. 9+46.63 | SCALE HORIZ. 1" = 50' VERT. 1" = 5' DRAWING NO. D-1108 |
|---|--|---|

MUNICIPALITY OF ASSINIBOIA

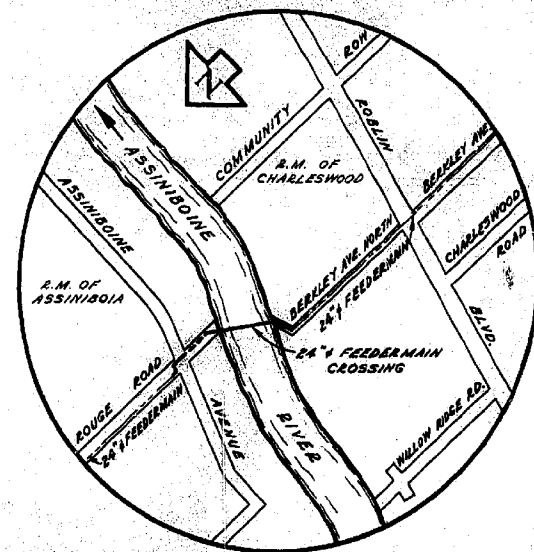
MUNICIPALITY OF CHARLESWOOD

Deposited in the Winnipeg Land Titles Office this 15th day of September, AD 1964 at 12:30 P.M. as Railway Deposit No 830.

Signed C.A. Evans
Dep. District Registrar

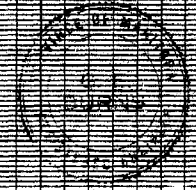
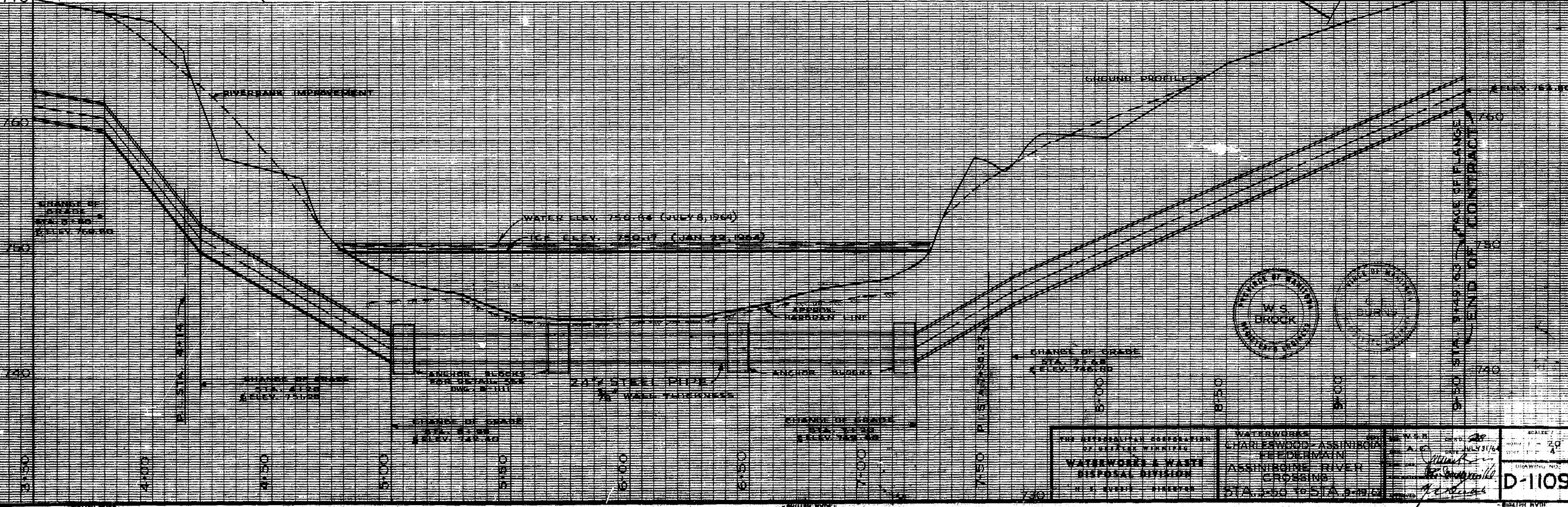
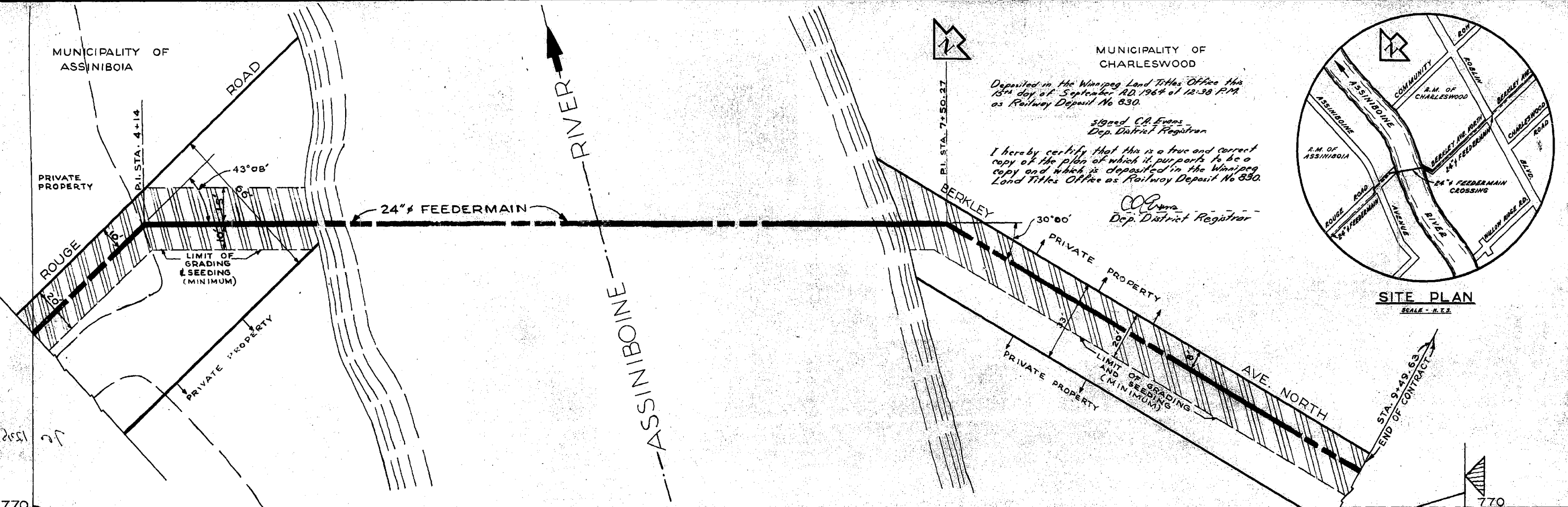
I hereby certify that this is a true and correct copy of the plan of which it purports to be a copy and which is deposited in the Winnipeg Land Titles Office as Railway Deposit No 830.

C.A. Evans
Dep. District Registrar

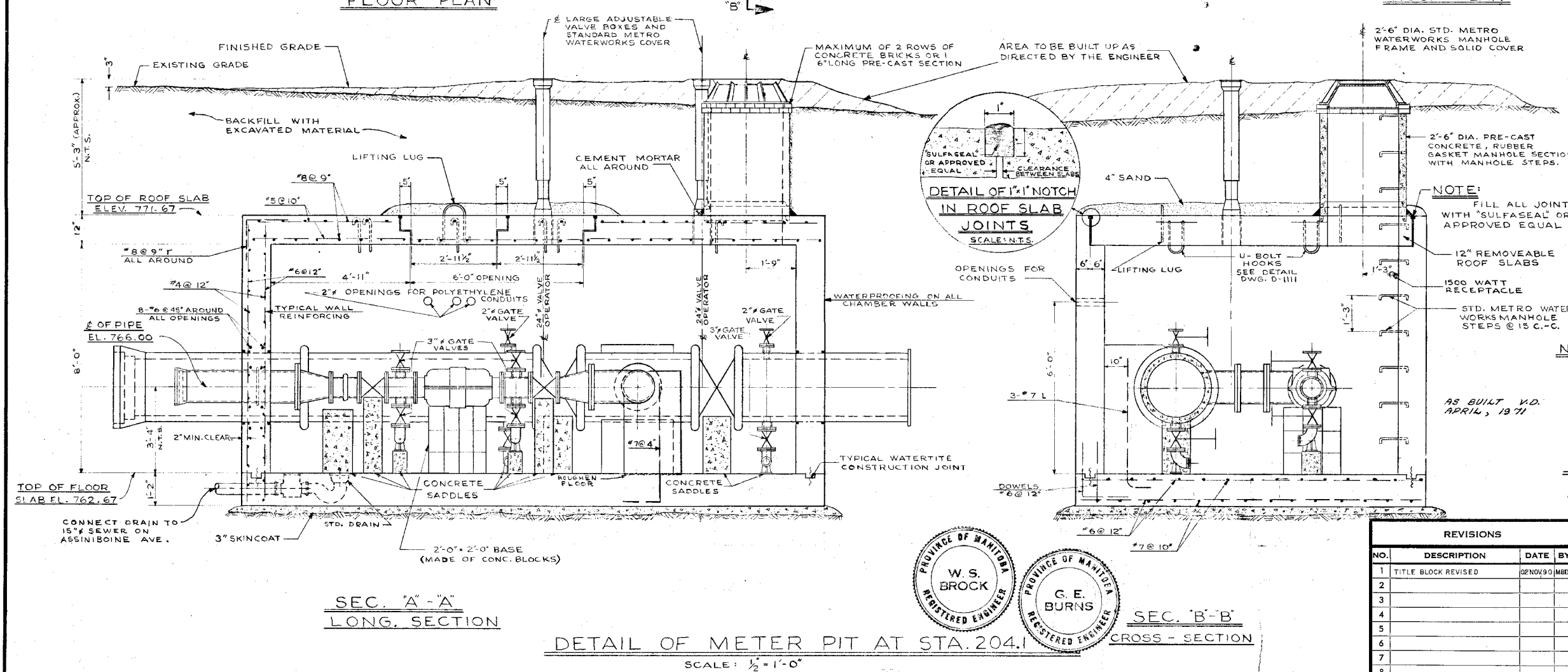
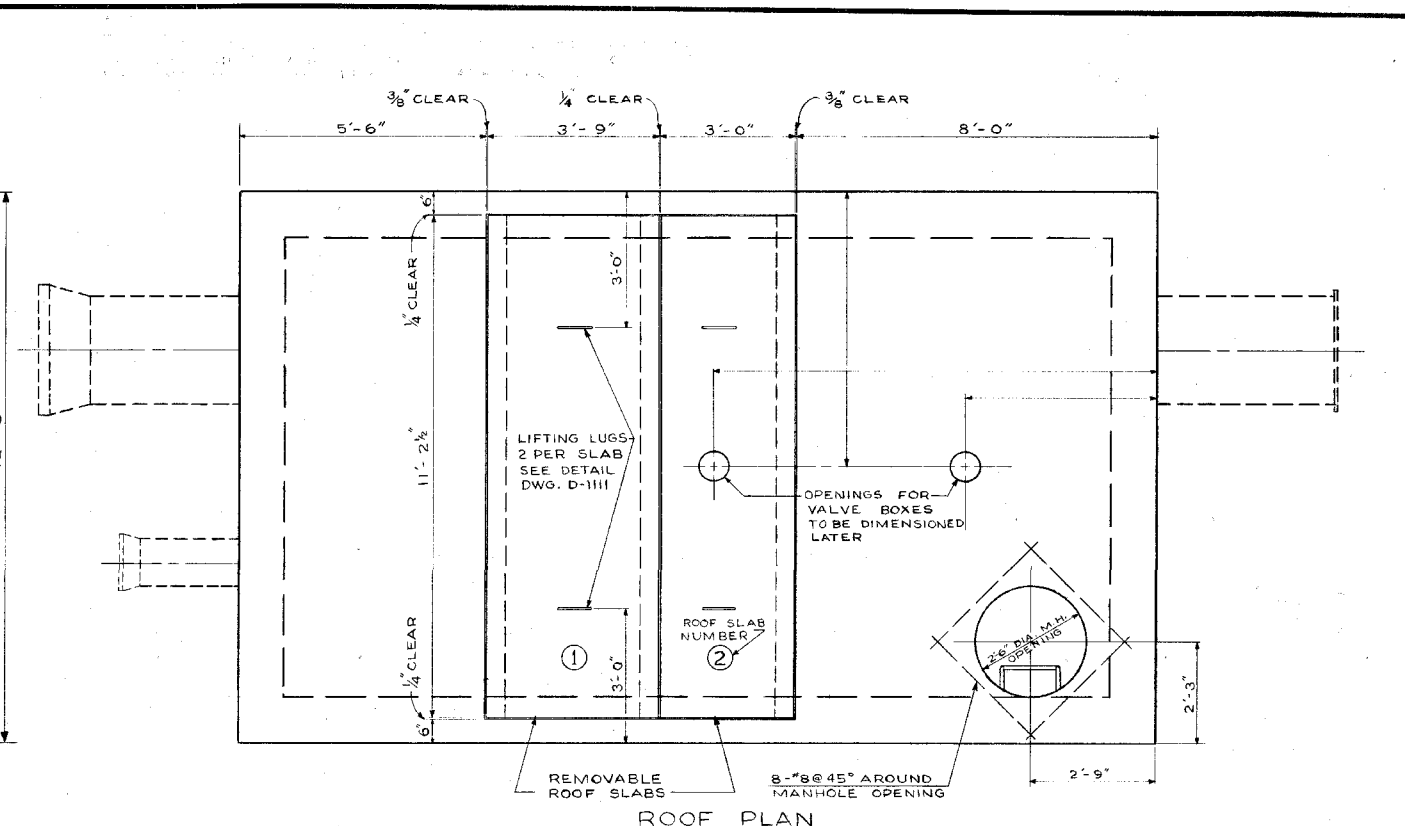
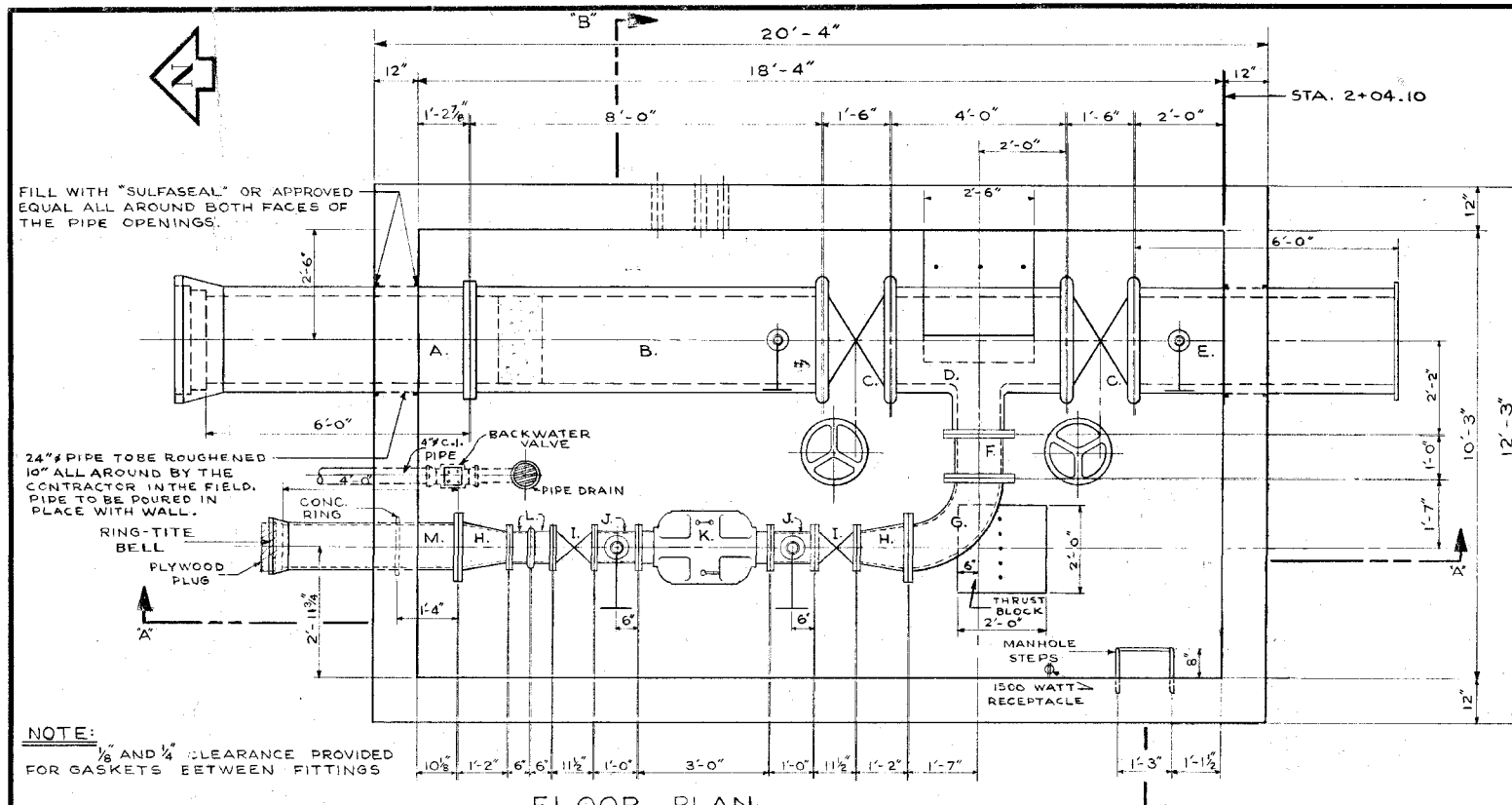


SITE PLAN

SCALE - N.T.S.



| | | | |
|--|--|--|--|
| FOR OFFICIAL USE ONLY WATERWORKS & WASTE DISPOSAL DIVISION W. S. BROCK, ENGINEER | WATERWORKS CHARLESWOOD-ASSINIBOIA FEEDERMAIN | DATE: JULY 31/64 DRAWN BY: [Signature] CHECKED BY: [Signature] | SCALE: 1" = 20' DRAWING NO.: D-1109 |
| | STA. 2+50 TO STA. 9+49.63 | PROJECT NO.: | SHEET NO.: |



LIST OF MATERIALS FOR METER PIT

| ITEM | DESCRIPTION | LENGTH |
|------|--|---------|
| ▲ A. | 24" CONC. PIPE (FLANGE TO BELL) | 6'-0" |
| ▲ B. | 24" CONC. PIPE (VICTAULIC TO FLANGE) | 8'-0" |
| ▲ C. | 2-24" VICTAULIC BUTTERFLY VALVE | 1'-6" |
| ▲ D. | 24" x 24" x 12" CONC. TEE (VICT. TO VICT. TO FLANGE) | 4'-0" |
| ▲ E. | 24" CONC. PIPE (FLANGE TO VICTAULIC) | 6'-0" |
| F. | 12" C.I. FILLER PIECE FLANGED | 1'-0" |
| G. | 12" C.I. ELBOW FLANGED | 1'-7" |
| H. | 2-12" x 8" C.I. REDUCER/INCREASER FLANGED | 1'-2" |
| ▲ I. | 2-8" GATE VALVES FLANGED | 11 1/2" |
| ▲ J. | 2-8" C.I. FILLER PIECES FLANGED WITH OUTLETS | 1'-0" |
| ▲ K. | 8" MAGNETIC-FLOW METER FLANGED | 3'-0" |
| L. | 2-8" C.I. FILLER PIECES (FLANGE TO VICTAULIC) | 0'-6" |
| ▲ M. | 12" C.I. PIPE (FLANGE TO BELL) | 4'-0" |

NOTE:

- ITEMS J. TO HAVE 3" TAPPED HOLES ON OPPOSITE SIDES.
- ITEM M. TO HAVE A CONCRETE RING 1'-4" FROM THE FLANGED END
- ▲ THE METRO CORPORATION WILL SUPPLY ITEMS A., B., C., D., E., I., J., K.; ALSO 4-24" VICTAULIC COUPLINGS AND AN 8" VICTAULIC COUPLING.

NOTE:

FOR FURTHER DETAILS AND NOTES ON METER PIT SEE DWG. D-1111

REVISIONS

| NO. | DESCRIPTION | DATE | BY |
|-----|---------------------|-----------|-----|
| 1 | TITLE BLOCK REVISED | 02 NOV 90 | MBD |
| 2 | | | |
| 3 | | | |
| 4 | | | |
| 5 | | | |
| 6 | | | |
| 7 | | | |
| 8 | | | |

THE METROPOLITAN CORPORATION OF GREATER WINNIPEG
WATERWORKS & WASTE DISPOSAL DIVISION
 WATERWORKS DEPT.

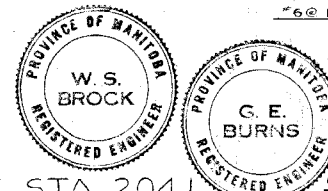
CHARLESWOOD-ASSINABOIA FEEDERMAIN RIVER CROSSING
 METER PIT - ROUGE ROAD AT ASSINABOINE AVENUE
 STA. 2+04.10

APPROVED BY: *[Signature]*
 DESIGNED BY: W.S.B.
 DRAWN BY: A.C.
 DATE: JULY 31/87

CHIEF ENGINEER

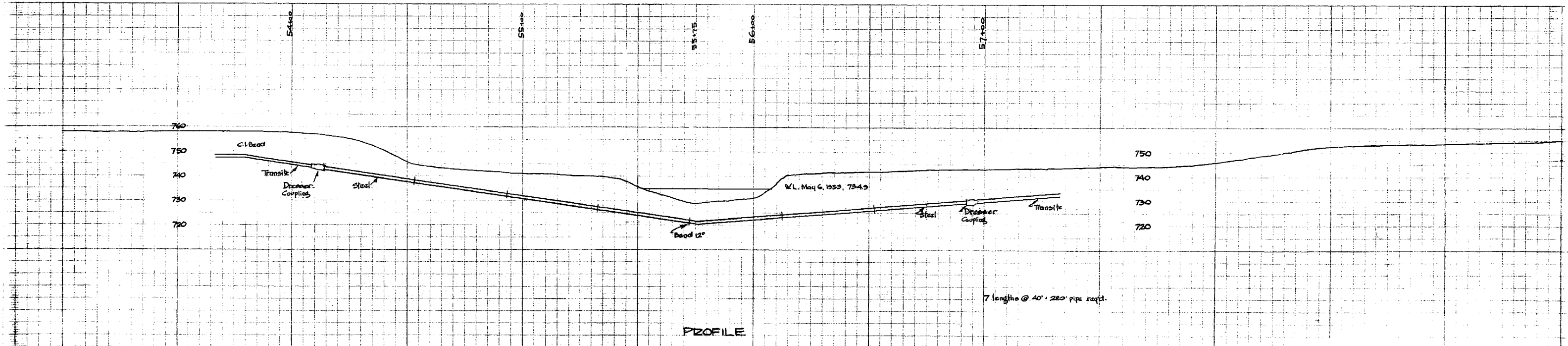
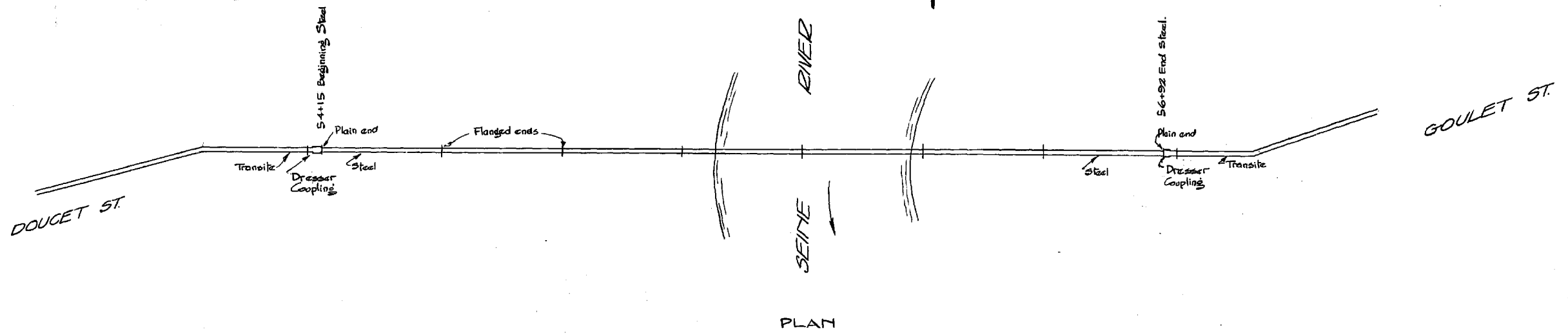
DRAWING NO. **D-11110**

SCALE: AS NOTED



City of Winnipeg
W002852

D-1110

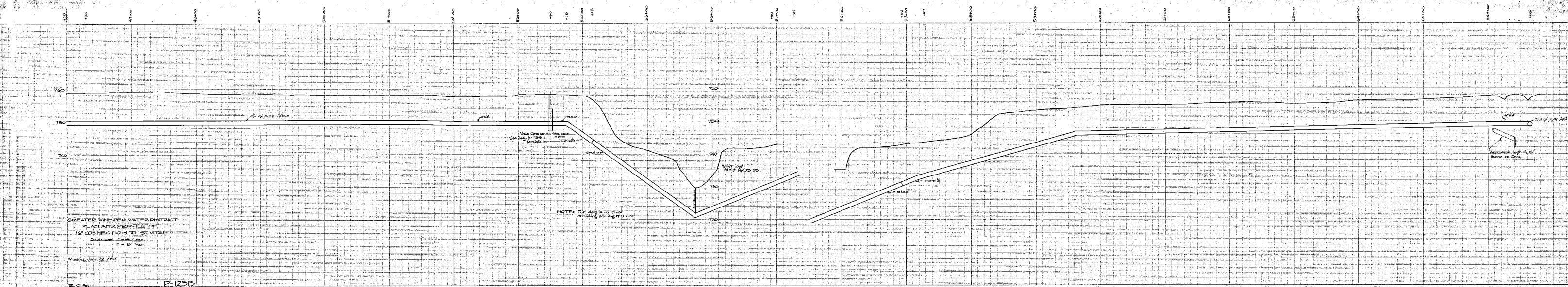
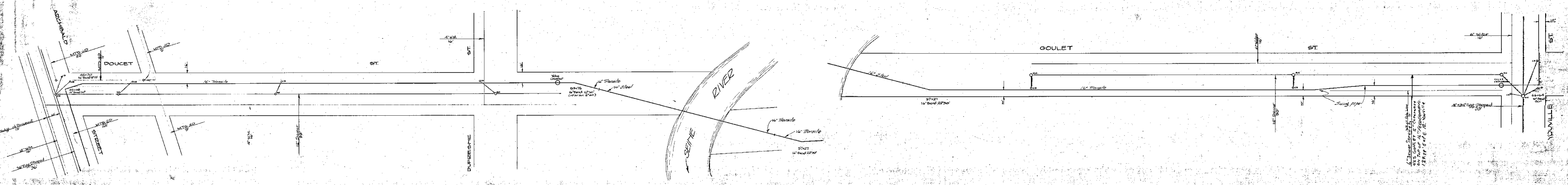


GREATER WINNIPEG WATER DISTRICT
 ST. VITAL CONNECTION CROSSING
 OF SEINE RIVER
 SCALES: Hor. 1" = 20'
 VER. 1" = 20'

Winnipeg, June 3, 1953

J. H. Smith
 PROJECT MANAGER

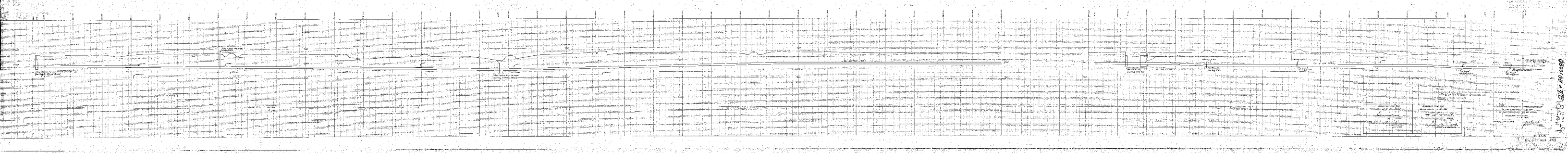
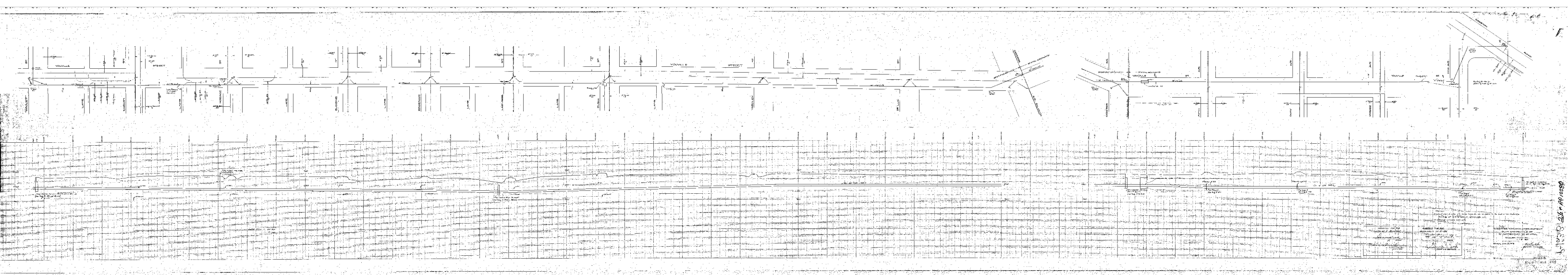
Revised June 29, 1955 - Dresser Couplings added.



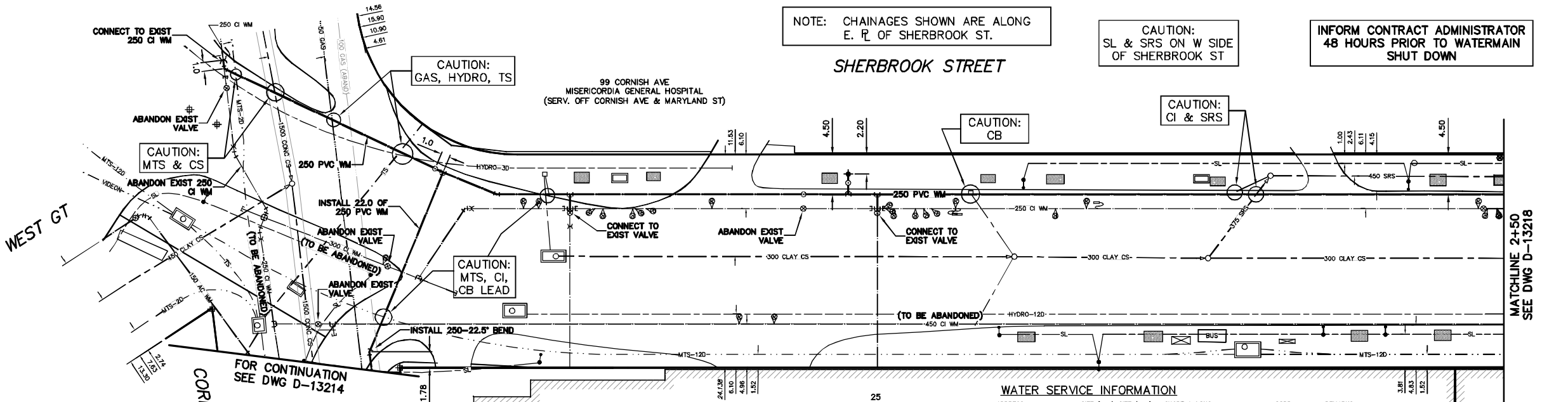
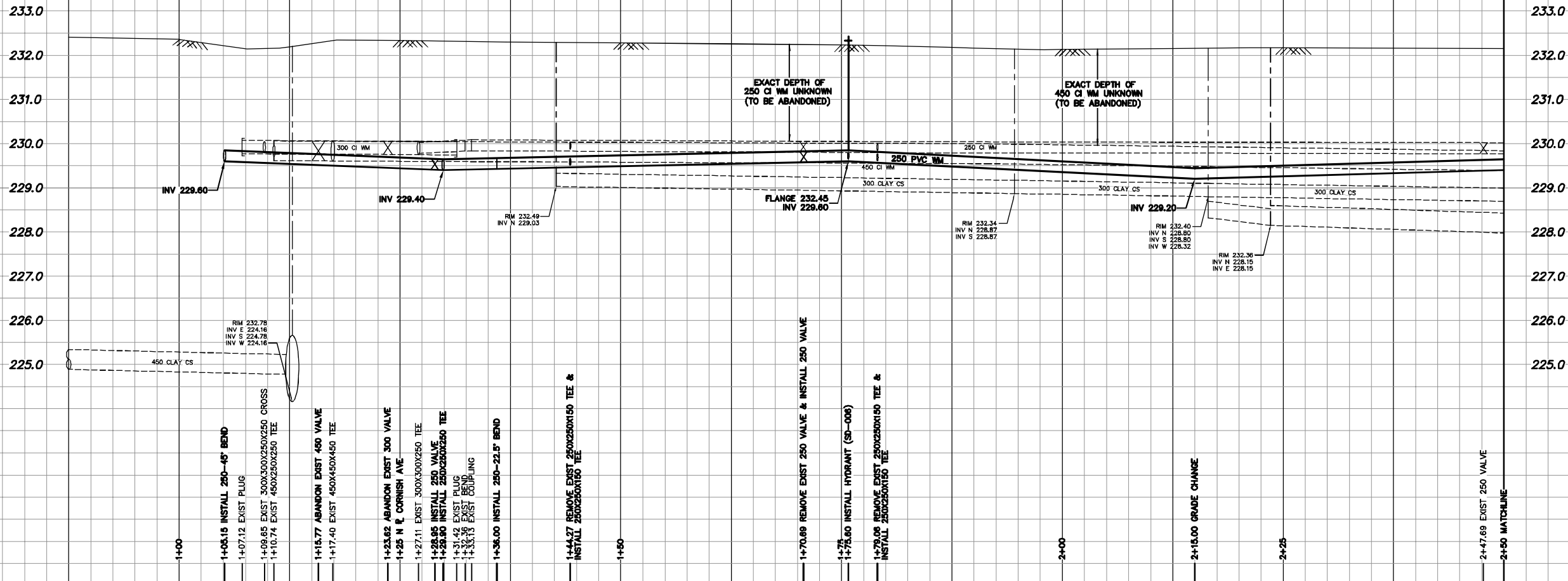
GREATER WINNIPEG WATER DISTRICT
 PLAN AND PROFILE OF
 16" CONNECTION TO ST. VITAL
 SHEET NO. 1000
 P. 1000

Winnipeg, June 22, 1953

E. C. S. P. 1235



1-1030-24-1-1030



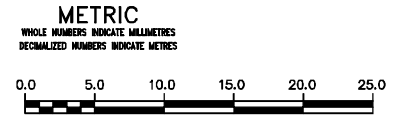
NOTE: CHAINAGES SHOWN ARE ALONG E. R. OF SHERBROOK ST.

CAUTION: SL & SRS ON W SIDE OF SHERBROOK ST

INFORM CONTRACT ADMINISTRATOR 48 HOURS PRIOR TO WATERMAIN SHUT DOWN

| ADDRESS | SIZE (mm) MATERIAL (STREET) | SIZE (mm) MATERIAL (PROP.) | SHORT & LONG MEASUREMENT | CORP. LOCATION | REMARKS |
|-----------------|-----------------------------|----------------------------|--------------------------|----------------|--------------------|
| 25 SHERBROOK ST | 150 PVC | 150 PVC | 10.96 NSL BLDG | OPP VALVE | - |
| 25 SHERBROOK ST | 150 PVC | 150 PVC | 19.22 NSL CORNISH | OPP VALVE | - |
| 25 SHERBROOK ST | 150 PVC | 150 PVC | 45.98 NSL BLDG | OPP VALVE | - |
| 25 SHERBROOK ST | 150 PVC | 150 PVC | 54.05 NSL CORNISH | OPP VALVE | - |
| 25 SHERBROOK ST | 150 PVC | 150 PVC | 11.24 EWL BLDG | OPP VALVE | SERV. OFF WOLSELEY |
| 25 SHERBROOK ST | 150 PVC | 150 PVC | 11.40 EWL SHERBROOK | OPP VALVE | - |
| 25 SHERBROOK ST | 150 PVC | 150 PVC | 11.84 EWL BLDG | OPP VALVE | SERV. OFF WOLSELEY |
| 25 SHERBROOK ST | 150 PVC | 150 PVC | 11.90 EWL SHERBROOK | OPP VALVE | - |

*SERVICES TO BE RENEWED TO E. ALL OTHERS TO BE RECONNECTED



WARNING

IF POWER EQUIPMENT OR EXPLOSIVES ARE TO BE USED FOR EXCAVATION ON THIS PROJECT THE CONTRACTOR MUST:

- NOTIFY THE GAS COMPANY OF THE PROPOSED LOCATION OF EXCAVATION.
- TAKE PRECAUTION TO AVOID DAMAGE TO GAS COMPANY INSTALLATIONS.

SEE PROVINCIAL REGULATION 210/72 FOR DETAILS

LOCATION APPROVED UNDERGROUND STRUCTURES

SUPV. U/G STRUCTURES COMMITTEE DATE

NOTE: LOCATION OF UNDERGROUND STRUCTURES AS SHOWN ARE BASED ON THE BEST INFORMATION AVAILABLE BUT NO GUARANTEE IS GIVEN THAT ALL EXISTING UTILITIES ARE SHOWN OR THAT THE GIVEN LOCATIONS ARE EXACT. CONFIRMATION OF EXISTENCE AND EXACT LOCATION OF ALL SERVICES MUST BE OBTAINED FROM THE INDIVIDUAL UTILITIES BEFORE PROCEEDING WITH CONSTRUCTION.

| NO. | REVISIONS | DATE | BY |
|-----|-----------|------|----|
| | | | |

B.M. ELEV.

CONSTRUCTION COMPLETION DATE: YYYY MM DD

DESIGNED BY: SC

CHECKED BY: SC

DRAWN BY: CJH

APPROVED BY: KZ

SCALE: HORIZONTAL 1:250, VERTICAL 1:50

RELEASED FOR CONSTRUCTION: K.R. ZUREK

DATE: 2013 05 06

ENGINEER'S SEAL

ORIGINAL SIGNED BY: S.R.J. COURNOYER 13-05-06

CONSULTANT DRAWING NUMBER

THE CITY OF WINNIPEG

WATER AND WASTE DEPARTMENT

ENGINEERING DIVISION

2013 WATER RENEWALS

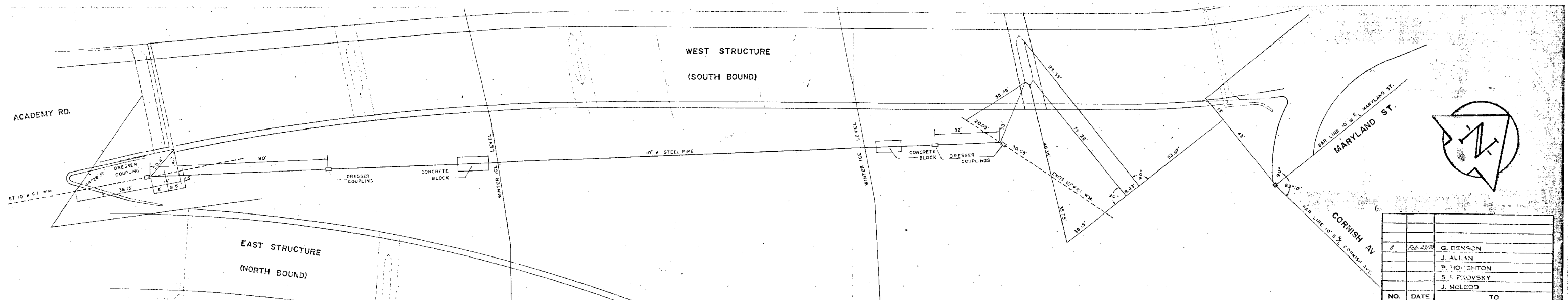
SHERBROOK STREET

CORNISH AVENUE TO

125 N OF CORNISH AVENUE

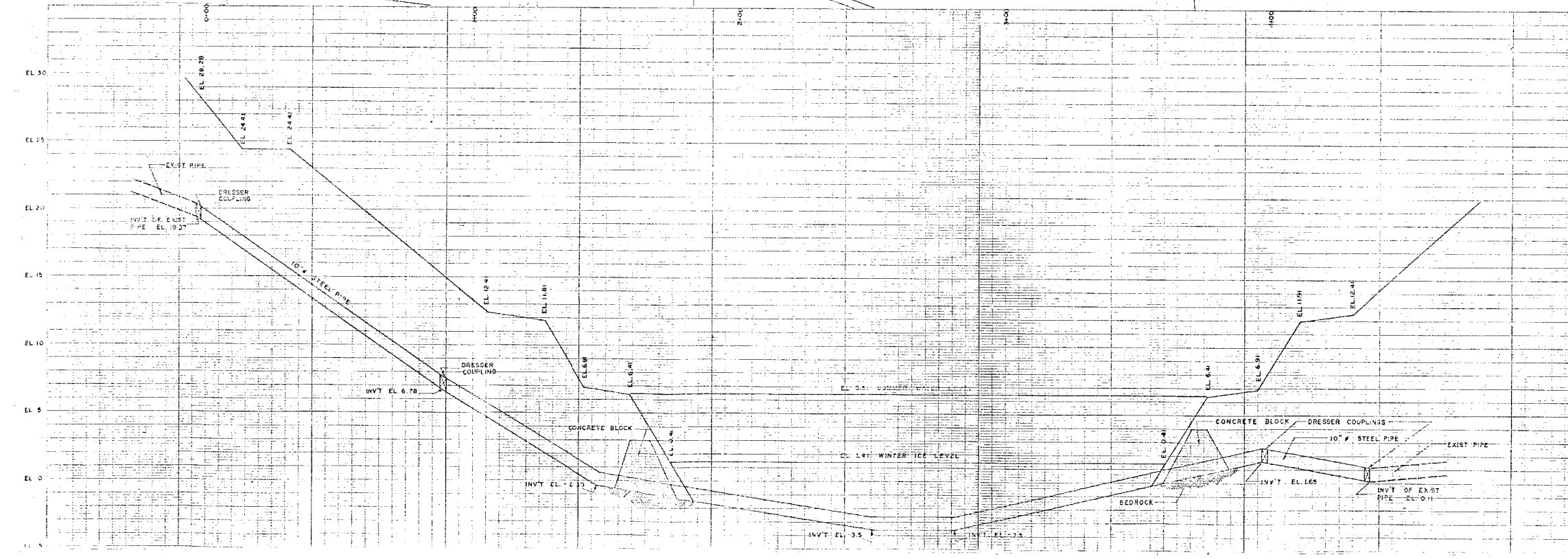
SHEET 5 OF 9

CITY DRAWING NUMBER: D-13217



| NO. | DATE | TO |
|-----|-----------|-------------|
| 1 | Feb 23/78 | G. DENSON |
| 2 | | J. ALLAN |
| 3 | | P. HOUGHTON |
| 4 | | S. PROVSKY |
| 5 | | J. MCLEOD |

DISTRIBUTION RECORD



CITY DATUM
= EL 72.53 GEODETIC

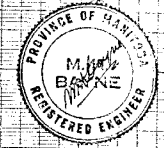
| MATERIAL LIST | | |
|------------------------------------|------------------|----------|
| ITEMS | SIZE | QUANTITY |
| Std Steel Pipe | 10" x 3/16" Wall | 437 |
| Pipe Couplings | 10" | 2 |
| To Be Salvaged From Exst Pipe Line | | |

NOTES:
1. STEEL PIPE TO BE CONNECTED TO EXIST 10" C.I. PIPE AT EACH END WITH DRESSER COUPLINGS. BUILD UP THE ENDS OF THE STEEL PIPE TO 11.1" O.D. TO SUIT THE EXIST C.I. PIPE.

D.M.L. S.M. Co. Asphalt Steg Academy
Contract 16. Shady Side Garage
N.E. Cor Wellington Crescent and
Academy Road 581 Wellington
Crescent EL 34.03

WATER WORKS PERSONAL
NUMBER 918-380-512

LOCATION APPROVED
UNDERGROUND STRUCTURES COMM. OF
FEB 23/78



CITY OF WASHINGTON
ENGINEERING DEPARTMENT
W. O. HURST - CITY ENGINEER
J. B. STROUD - DEPUTY CITY ENGINEER

TITLE: NEW WATERMAIN RIVER
CROSSING - ASSINIBOINE RIVER
AT MARYLAND BRIDGE

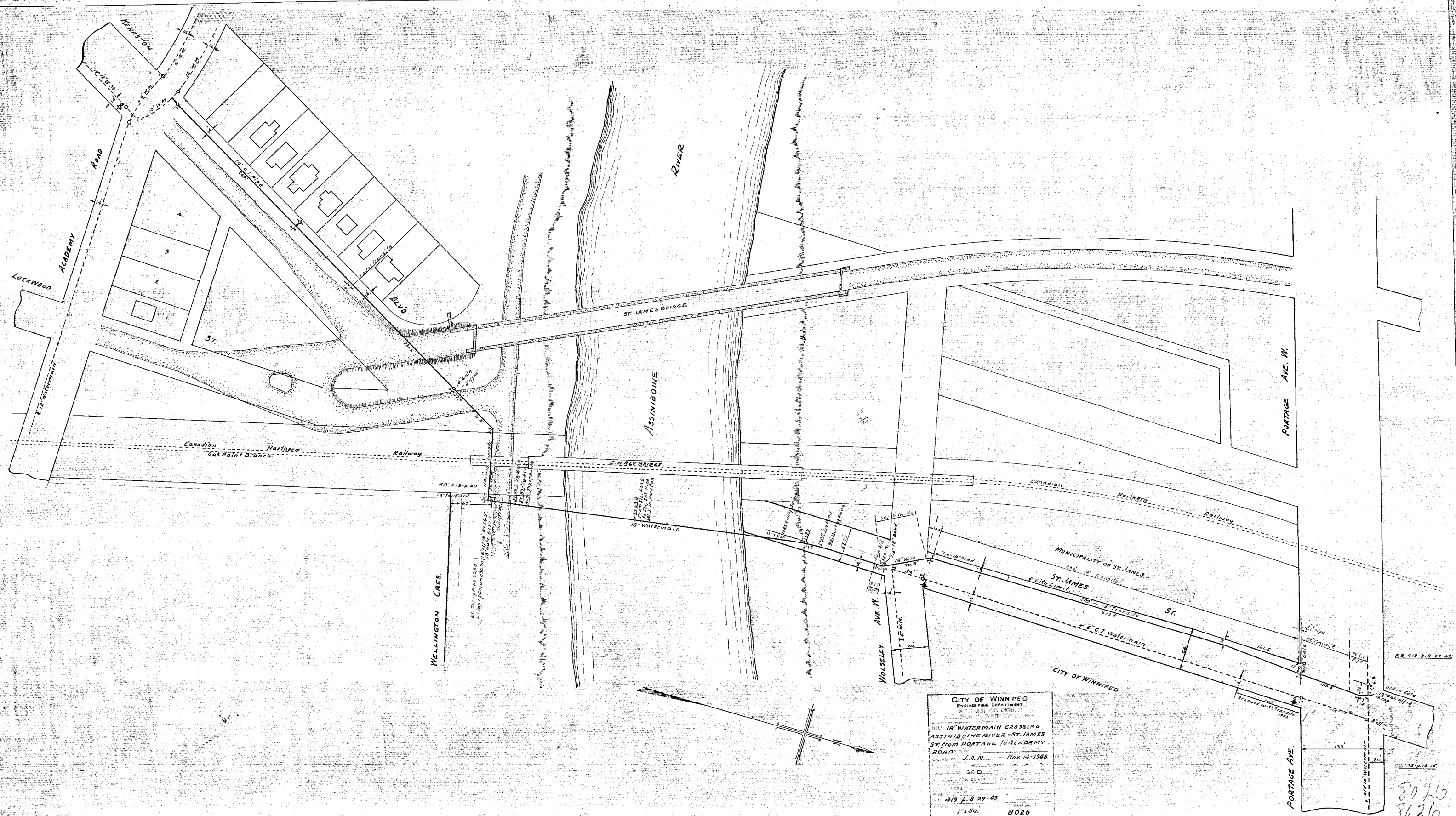
DRAWN BY: RD DATE: Feb 20/78
CHECKED BY: GMS Feb 23/78
APPROVED BY:

REFERENCES: D. M. S. P. B. 1879: 14.14
D. W. City Control Survey Monument 281 #
Cormish Av. & Maryland St. EL 33.04

SCALE: Plan 1"=20'
Profile 1"=10'

DRAWN BY: WA 19059

WA-19059



CITY OF WINNIPEG
 ENGINEERING DEPARTMENT
 WATER MAINS SECTION
 PLAN OF 18" WATERMAIN CROSSING
 ASSINIBOINE RIVER - ST. JAMES
 ST. FROM PORTAGE TO ACADEMY
 ROAD
 DRAWN BY J.A.M. DATE Nov. 14, 1946
 CHECKED BY G.C.D.
 APPROVED BY W. H. HARRISON
 419-P-8-29-49
 1"=50' 8026

8026
 8026