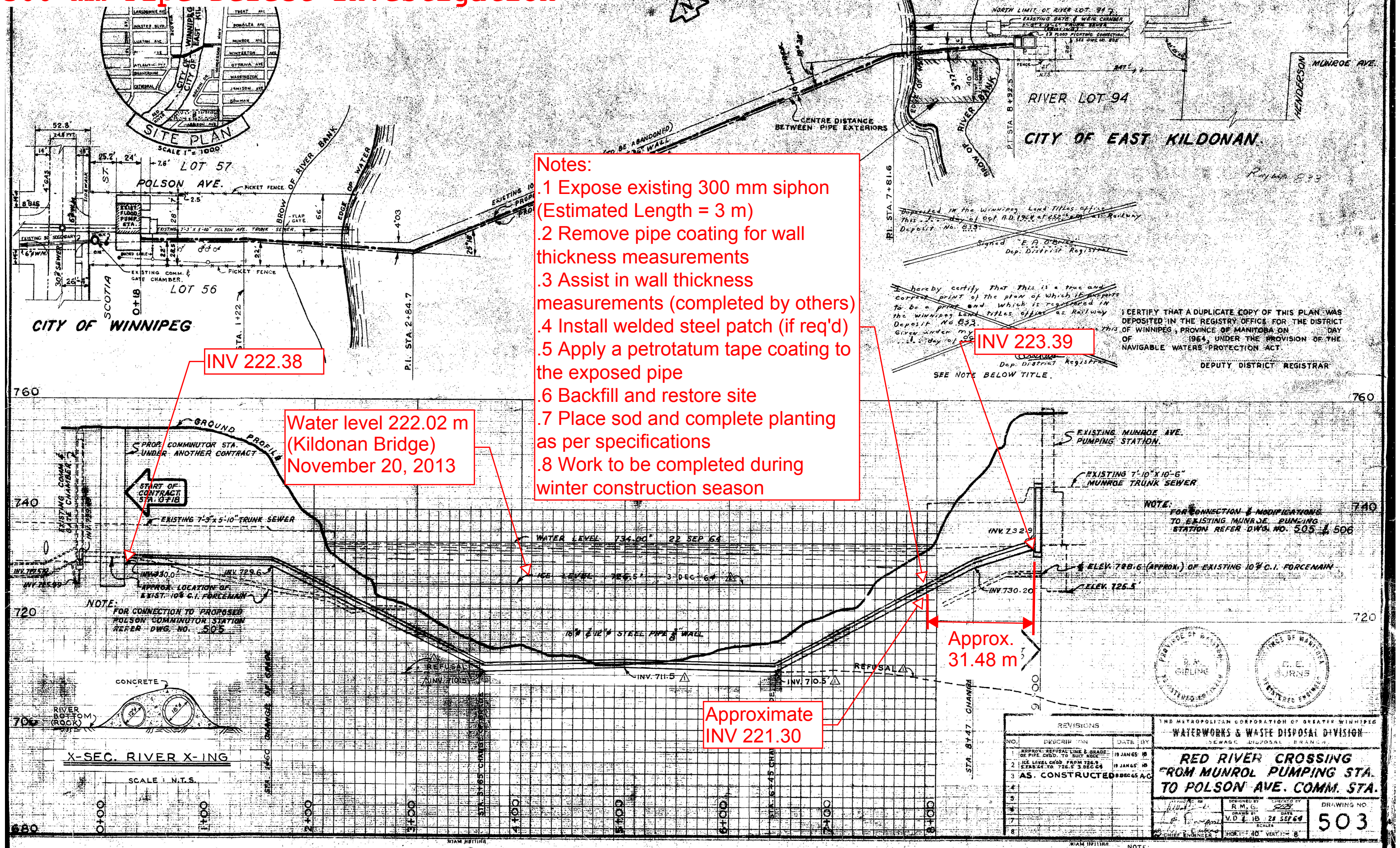


Appendix C

Pipeline External Inspection Drawing

Site 6 - Munroe-Polson Siphon 300 mm Pipe Defect Investigation



- Notes:**
- .1 Expose existing 300 mm siphon (Estimated Length = 3 m)
 - .2 Remove pipe coating for wall thickness measurements
 - .3 Assist in wall thickness measurements (completed by others)
 - .4 Install welded steel patch (if req'd)
 - .5 Apply a petrotatum tape coating to the exposed pipe
 - .6 Backfill and restore site
 - .7 Place sod and complete planting as per specifications
 - .8 Work to be completed during winter construction season

INV 222.38

Water level 222.02 m (Kildonan Bridge) November 20, 2013

INV 223.39

Approx. 31.48 m

Approximate INV 221.30

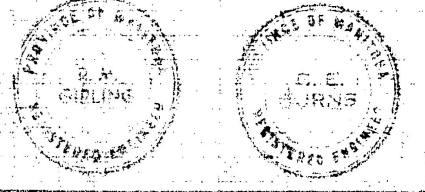
Deposited in the Winnipeg Land Titles Office
This 21st day of Oct. A.D. 1964 at 4:52^{PM} by
Deposit No. 833
Signed "E. A. O'Brien"
Dep. District Registrar

hereby certify that this is a true and correct print of the plan of which it appears to be a part and which is registered in the Winnipeg Land Titles Office as Railway Deposit No. 833.
Given under my hand and seal this 21st day of Oct. 1964.
Dep. District Registrar
SEE NOTE BELOW TITLE.

I CERTIFY THAT A DUPLICATE COPY OF THIS PLAN WAS DEPOSITED IN THE REGISTRY OFFICE FOR THE DISTRICT OF WINNIPEG, PROVINCE OF MANITOBA ON _____ DAY OF _____ 1964, UNDER THE PROVISION OF THE NAVIGABLE WATERS PROTECTION ACT.
DEPUTY DISTRICT REGISTRAR

REVISIONS			
NO.	DESCRIPTION	DATE	BY
1	APPROX. REFUSAL LINE & GRADE OF PIPE CHGD. TO SUIT ROCK	19 JAN 65	IB
2	ICE LEVEL CHGD. FROM 726.5 TO 726.2	19 JAN 65	IB
3	AS CONSTRUCTED	28 SEP 64	AG
4			
5			
6			
7			
8			

THE METROPOLITAN CORPORATION OF GREATER WINNIPEG WATERWORKS & WASTE DISPOSAL DIVISION SEWAGE DISPOSAL BRANCH			
RED RIVER CROSSING FROM MUNROE PUMPING STA. TO POLSON AVE. COMM. STA.			
DESIGNED BY R. M. G.	CHECKED BY S. J. S.	DATE 28 SEP 64	DRAWING NO. 503



NOTE: FOR REGD. PLAN ORIGINAL, NEED WITH WINNIPEG LAND TITLES OFFICE DEPT. OF PUBLIC WORKS OTTAWA SEE SEPIA OF DWG. NO. 503