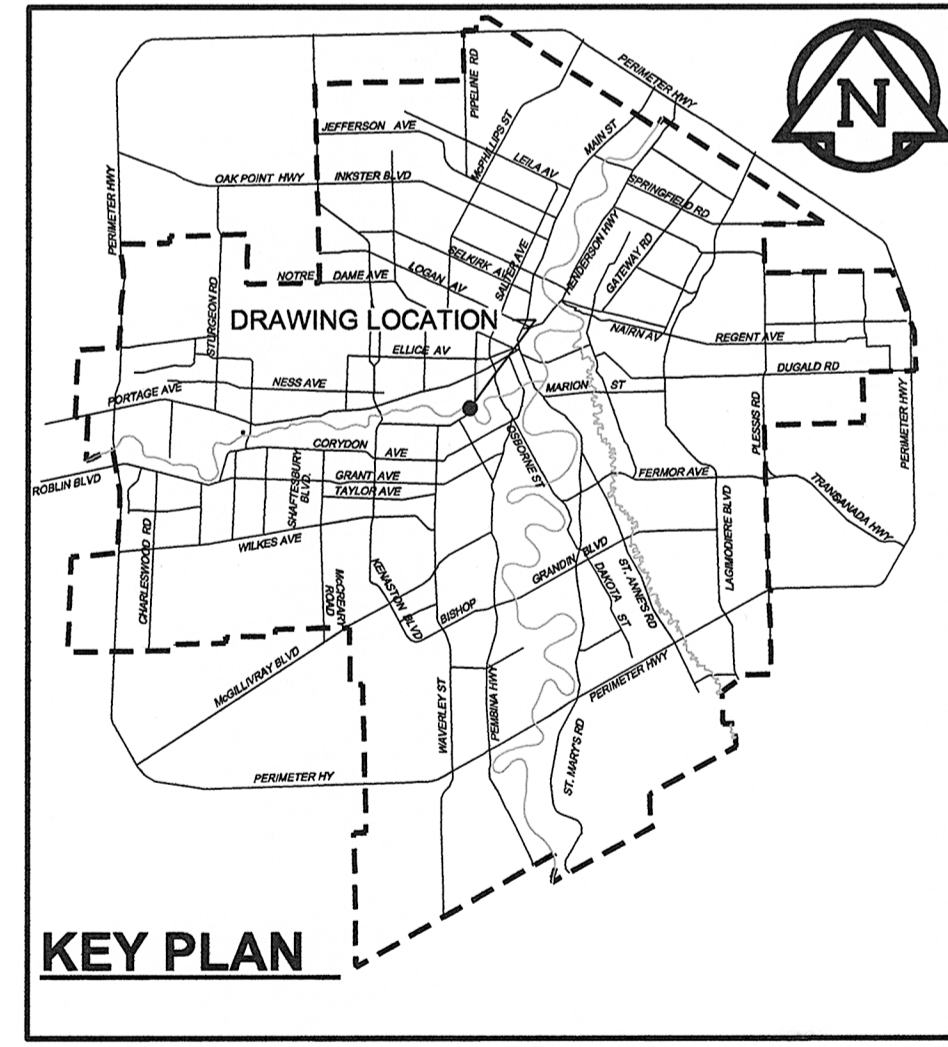
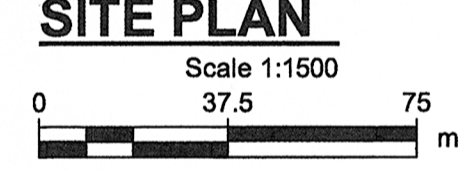
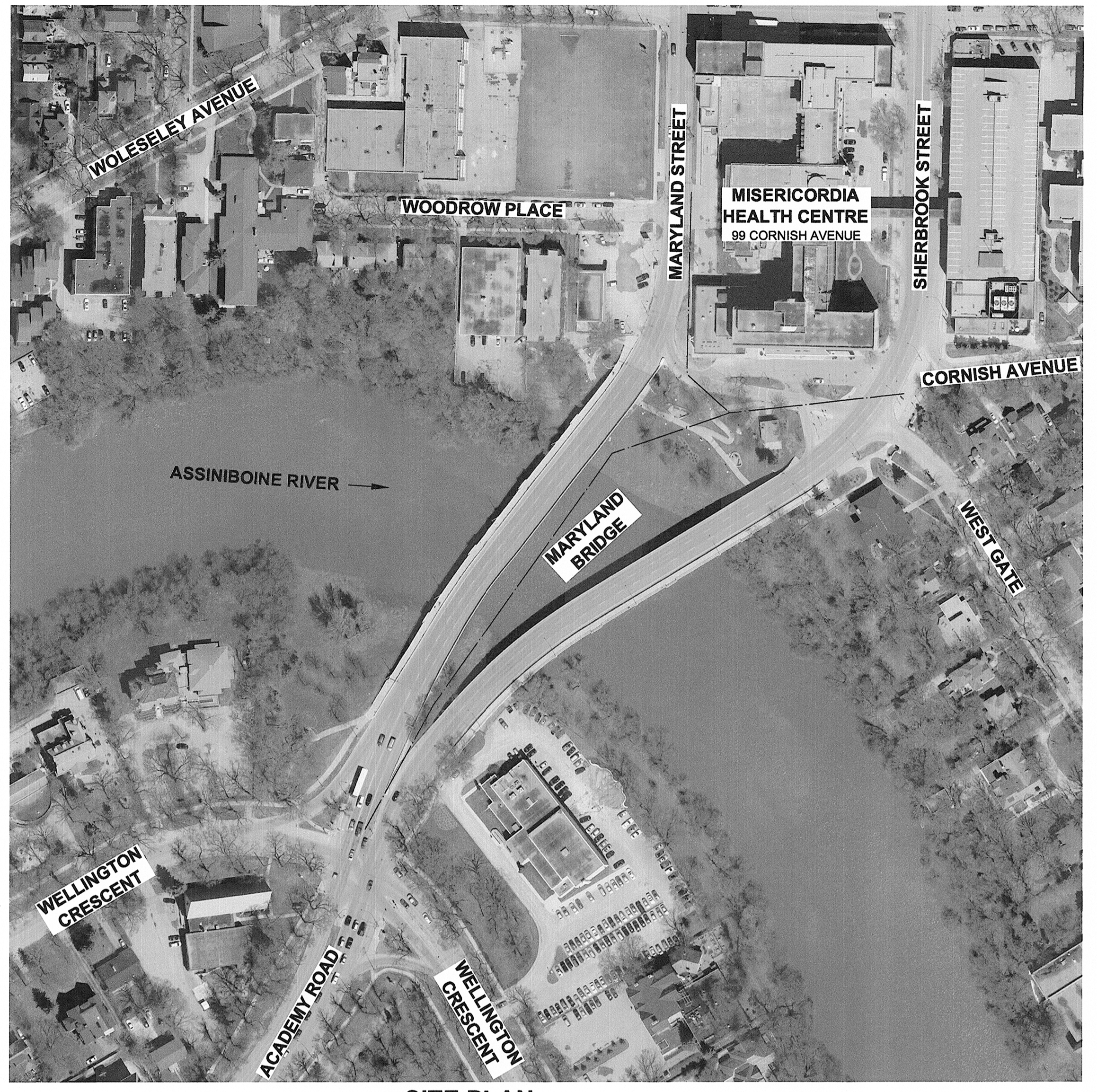
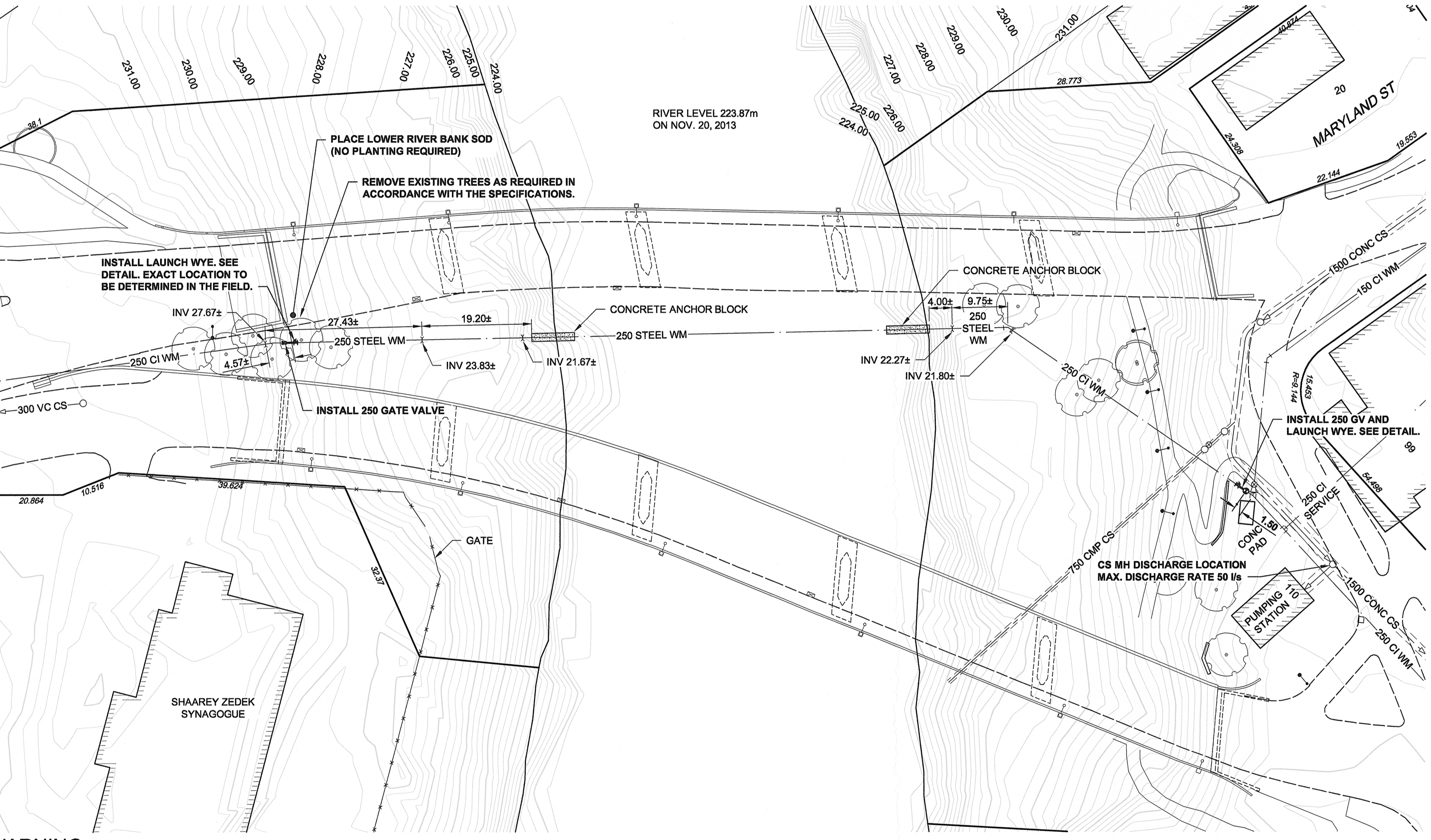
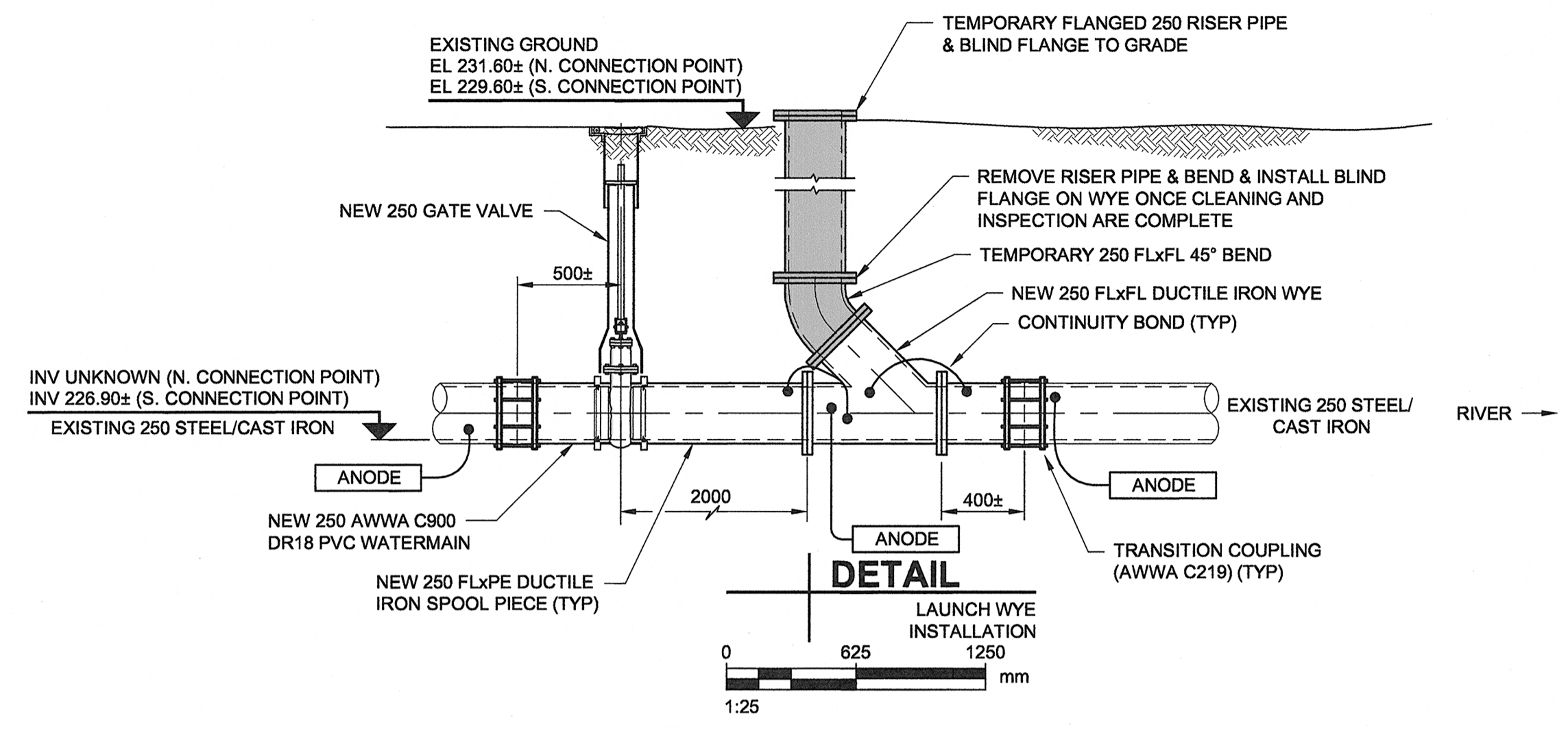


D SIZE 22" x 34" (569mm x 864mm)

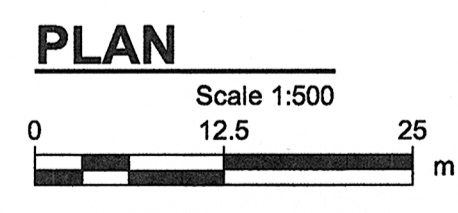
PLOT: 5/6/2015 1:27:00 PM

AECOM FILE NAME: 60270487-SHT-30-0000-C-1003.dwg Saved By: denoude@winnipeg.ca



- NOTES:**
- SEQUENCE OF WORK:**
1. LOCATE PIPE, CONFIRM MATERIAL AND OUTSIDE DIAMETER.
 2. DEPTH OF 250 WM OFF CORNISH AVENUE UNKNOWN.
 3. ISOLATE CROSSING PIPE (BY CITY).
 4. INSTALL 600 FLANGED DUCTILE IRON WYE (SEE DETAIL THIS DRAWING).
 5. INSTALL TEMPORARY BEND AND PIPE TO ALLOW FOR LAUNCH OF CLEANING PIGS AND INSPECTION TOOLS.
 6. COMPLETE CLEANING, INSPECTION, AND DISINFECTION OF WATERMAIN.
 7. REMOVE TEMPORARY PIPING AND INSTALL BLIND FLANGE ON WYE.
 8. BACKFILL AND RESTORE SITE.
- CONSTRUCTION NOTES:**
1. MINIMUM FLUSHING FLOW RATE OF 37 l/s BASED ON MINIMUM FLUSHING VELOCITY OF 0.76 m/s.
 2. SEE DRAWING FOR CLEANING AND FLUSHING WATER DISCHARGE MANHOLE LOCATIONS.
 3. MAINTAIN 1 LANE OF TRAFFIC ON CORNISH AVENUE AT ALL TIMES.
 4. ACCESS SOUTH BANK OF RIVER THRU PARKING LOT OF SHARREY ZEDEK SYNAGOGUE.
 5. RESTORE BOULEVARDS, SIDEWALKS AND ROADWAYS DAMAGED DURING CONSTRUCTION.
 6. ENSURE PIPELINE IS NOT DEWATERED DURING CLEANING AND INSPECTION WORK.

WARNING
 IF POWER EQUIPMENT OR EXPLOSIVES ARE TO BE USED FOR EXCAVATION ON THIS PROJECT, THE CONTRACTOR MUST:
 1) NOTIFY THE GAS COMPANY OF THE PROPOSED LOCATION OF EXCAVATION.
 2) TAKE PRECAUTION TO AVOID DAMAGE TO GAS COMPANY INSTALLATIONS.
 SEE PROVINCIAL REGULATION 140/92 FOR DETAILS.



METRIC
 WHOLE NUMBERS INDICATE MILLIMETRES
 DECIMALIZED NUMBERS INDICATE METRES

AECOM
 Certificate of Authorization
 AECOM Canada Ltd.
 No. 4671 Date: May 5, 2015

BID OPPORTUNITY NO. 289-2015

150 WM	WATERMAIN	150 WM	CURB STOP	150 WM	WATERMAIN	150 WM	LOCATION APPROVED
○	HYDRANT	○	REDUCER	○	HYDRANT	○	UNDERGROUND STRUCTURES
○	VALVE	○	COUPLING	○	VALVE	○	DATE
○	LAND DRAINAGE SEWER	○	ANODE	○	LAND DRAINAGE SEWER	○	NOTE:
○	WASTE WATER SEWER	○	HYDRO	○	WASTE WATER SEWER	○	LOCATION OF UNDERGROUND STRUCTURES AS SHOWN ARE BASED ON THE BEST INFORMATION AVAILABLE. BUT NO GUARANTEE IS GIVEN THAT ALL EXISTING UTILITIES ARE SHOWN OR THAT THE GIVEN LOCATIONS ARE EXACT. CONFIRMATION OF EXISTENCE AND EXACT LOCATION OF ALL SERVICES MUST BE OBTAINED FROM THE INDIVIDUAL UTILITIES BEFORE PROCEEDING WITH CONSTRUCTION.
○	MANHOLE	○	MTS	○	PAVEMENT CROWN	○	
○	CATCH BASIN	○	GAS	○	N/W PROPERTY LINE	○	
○	CURB INLET	○	TESTHOLE	○	S/E PROPERTY LINE	○	
○	CULVERT	○	LAMP STANDARD	○	N/W GUTTER	○	
○	PIPE ABANDONMENTS	○	TREE	○	S/E GUTTER	○	
○	SURVEY BAR	○		○		○	
○	EXISTING	○	LEGEND - PLAN	○	LEGEND - PROFILE	○	
○	NEW	○		○		○	

LOCATION APPROVED
 UNDERGROUND STRUCTURES
 SUPR. U/G STRUCTURES DATE COMMITTEE
 NOTE:
 LOCATION OF UNDERGROUND STRUCTURES AS SHOWN ARE BASED ON THE BEST INFORMATION AVAILABLE. BUT NO GUARANTEE IS GIVEN THAT ALL EXISTING UTILITIES ARE SHOWN OR THAT THE GIVEN LOCATIONS ARE EXACT. CONFIRMATION OF EXISTENCE AND EXACT LOCATION OF ALL SERVICES MUST BE OBTAINED FROM THE INDIVIDUAL UTILITIES BEFORE PROCEEDING WITH CONSTRUCTION.

NO.	REVISIONS	DATE	BY
1	ADDED 250 GATE VALVE	15/05/05	Wjd
0	ISSUED FOR CONSTRUCTION	15/04/16	ADL

AECOM

DESIGNED BY: ADB
 CHECKED BY: [Signature]
 DRAWN BY: ADL
 APPROVED BY: [Signature]
 HOR. SCALE: AS NOTED
 VERT. SCALE: N/A
 RELEASED FOR CONSTRUCTION: A. Delaurier
 DATE: May 1, 2015

PROFESSIONAL'S SEAL
 PROVINCE OF MANITOBA
 A.D. BRAUN
 Member 24453
 5/15/15
 REGISTERED PROFESSIONAL ENGINEER
 CONSULTANT DRAWING NO. 60270487-SHT-30-0000-C-1003

THE CITY OF WINNIPEG WATER AND WASTE DEPARTMENT

PROVISION OF PIPELINE ACCESS MODIFICATIONS, CLEANING AND SUPPORT SERVICES FOR WATERMAIN RIVER CROSSING INSPECTIONS

SITE 12
 MARYLAND BRIDGE WATERMAIN

SHEET 3 OF 4
 CITY DRAWING NUMBER D-13303
 REV 1