



# THE CITY OF WINNIPEG

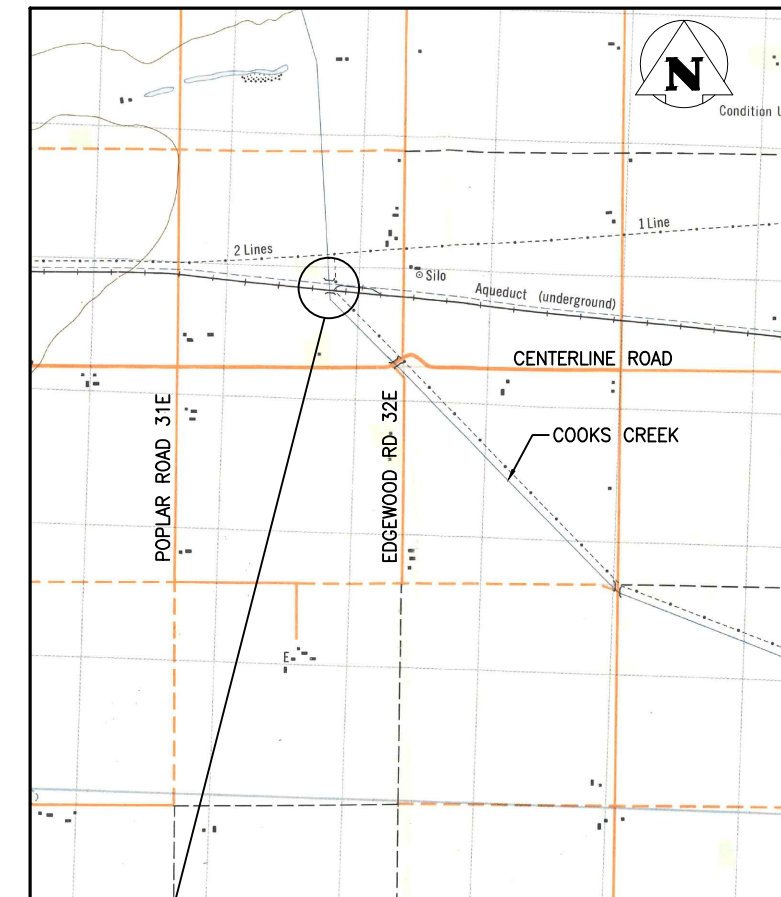
WATER AND WASTE DEPARTMENT  
ENGINEERING DIVISION

## GWWD RAILWAY BRIDGE REPLACEMENT AT MILE 22.15

BID OPPORTUNITY NO. 296-2015

### DRAWING INDEX

CITY DWG. No.	CONSULTANT DWG. No.	DRAWING DESCRIPTION	SHEET No.
D-13422	G003	COVER SHEET & DRAWING INDEX	1 OF 15
D-13423	G004	GENERAL NOTES	2 OF 15
D-13424	S101	SITE PLAN	3 OF 15
D-13425	S102	SITE ACCESS PLAN	4 OF 15
D-13426	S103	GENERAL ARRANGEMENT	5 OF 15
D-13427	S104	ABUTMENT CONCRETE PLAN & DETAILS	6 OF 15
D-13428	S105	ABUTMENT REINFORCING PLAN & DETAILS	7 OF 15
D-13429	S106	STEEL LAYOUT & CONNECTION DETAILS	8 OF 15
D-13430	S107	STEEL CONNECTION DETAILS	9 OF 15
D-13431	S108	STEEL GIRDER DETAILS	10 OF 15
D-13432	S109	STEEL BEAM DETAILS	11 OF 15
D-13433	S110	STEEL PLATE & ANGLE DETAILS	12 OF 15
D-13434	S111	STEEL BILL OF MATERIALS	13 OF 15
D-13435	T101	TRACK WORK PLAN & DETAILS	14 OF 15
D-13436	T102	TRACK PLANS & PROFILES	15 OF 15



BRIDGE SITE  
COOKS CREEK BRIDGE  
LAT. 49° 50' 50"  
LONG. 96° 44' 12"

**LOCATION PLAN**



100 - 1355 Taylor Avenue  
Winnipeg, Manitoba  
www.stantec.com

CONSULTANT DRAWING No. G003  
CITY DRAWING No. D-13422  
CAD FILE DRAWING No. 32050-g-003-800.dwg