

**PRELIMINARY**  
NOT TO BE USED FOR CONSTRUCTION

**CONSTRUCTION NOTES**  
1) CURB REPLACEMENT AS DIRECTED BY THE CONTRACT ADMINISTRATOR.  
2) ALL STREET RADIUS CURB UNDER 15M RADIUS SHALL BE REPLACED AS MODIFIED OR AS DIRECTED BY THE CONTRACT ADMINISTRATOR.

**WARNING**  
IF POWER EQUIPMENT OR EXPLOSIVES ARE TO BE USED FOR EXCAVATION ON THIS PROJECT THE CONTRACTOR MUST:  
1) OBTAIN CLEARANCE FROM THE GAS UTILITY PRIOR TO EXCAVATION.  
2) TAKE PRECAUTION TO AVOID DAMAGE TO GAS UTILITY INSTALLATIONS.  
SEE PROVINCIAL REGULATION 210/72 FOR DETAILS

METRIC  
WHOLE NUMBERS INDICATE MILLIMETRES  
DECIMALIZED NUMBERS INDICATE METRES

BID OPPORTUNITY NO. 3-2015

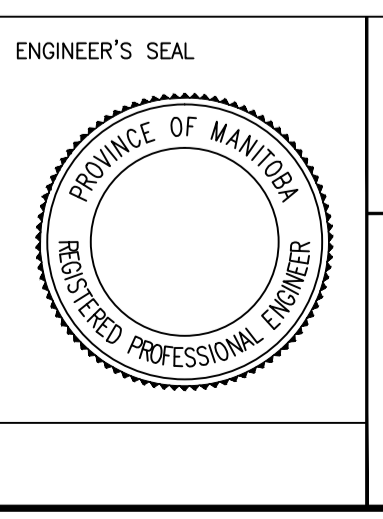
EXISTING	LEGEND - PLAN	PROPOSED	EXISTING	LEGEND - PLAN	PROPOSED	EXISTING	LEGEND - PROFILE	PROPOSED
⊕	HYDRANT	◆	---	LDS/WWS	---	---	NORTH GUTTER	---
⊙	VALVE	●	---	WATERMAIN	---	---	CENTER LINE	---
⊚	CURB STOP	⊙	---	GAS	---	---	SOUTH GUTTER	---
⊛	CONCRETE O.L.S.	⊛	---	HYDRO	---	---	NORTH PROPERTY LINE	---
○	MANHOLE	●	---	SHAW	---	---	SOUTH PROPERTY LINE	---
□	CATCH BASIN	■	---	MTS	---	---	WATER SERVICE	---
△	CURB INLET	▲	---	CONCRETE SIDEWALK	---	---		---
☆	HYDRO POLE	⬆	---	SURVEY BAR	---	---		---
⊗	TREE	⊗	---	CURB RENEWAL	---	---		---
			---	PROPERTY LINE	---	---		---
			---	RAMP CURB	---	---		---

LOCATION APPROVED UNDERGROUND STRUCTURES  
SUPR. U/G STRUCTURES COMMITTEE DATE  
NOTE:  
LOCATION OF UNDERGROUND STRUCTURES AS SHOWN ARE BASED ON THE BEST INFORMATION AVAILABLE. BUT NO GUARANTEE IS GIVEN THAT ALL EXISTING UTILITIES ARE SHOWN OR THAT THE GIVEN LOCATIONS ARE EXACT. CONFIRMATION OF EXISTENCE AND EXACT LOCATION OF ALL SERVICES MUST BE OBTAINED FROM THE INDIVIDUAL UTILITIES BEFORE PROCEEDING WITH CONSTRUCTION.

B.M. ELEV.	IB @ NW MATHERS ST AND OAK ST	232.951
DESIGNED BY	D.K.	CHECKED BY R.W./D.T.
DRAWN BY	D.K.	APPROVED BY R.T.C.
ISSUED FOR TENDER	03/24/2014	R.C.
NO. REVISIONS	DATE	BY

**ENGINEERING DIVISION**  
**TECHNOLOGY SERVICES BRANCH**  
106 - 1155 PACIFIC AVE

DESIGNED BY D.K.  
CHECKED BY R.W./D.T.  
DRAWN BY D.K.  
APPROVED BY R.T.C.  
HOR. SCALE: 1 : 250  
VERTICAL: 1 : 10  
DATE 2015/03/24



**THE CITY OF WINNIPEG**  
PUBLIC WORKS DEPARTMENT

**MATHERS AVENUE**  
FROM ASH ST TO WAVERLEY ST  
CONCRETE RECONSTRUCTION AND ASSOCIATED WORKS  
FROM STA. 2+25 TO STA. 3+50

CITY DRAWING NUMBER SE-15-2  
SHEET 2 OF 14  
2