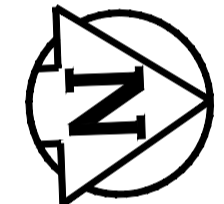


TYPICAL CROSS SECTION
N.T.S.

METRIC
WHOLE NUMBERS INDICATE MILLIMETRES
DECIMALIZED NUMBERS INDICATE METRES



PRELIMINARY
NOT TO BE USED FOR CONSTRUCTION

CONSTRUCTION NOTES
1) CURB REPLACEMENT AS DIRECTED BY THE CONTRACT ADMINISTRATOR.
2) ALL STREET RADIUS CURB UNDER 15M RADIUS SHALL BE REPLACED AS MODIFIED OR AS DIRECTED BY THE CONTRACT ADMINISTRATOR.

WARNING
IF POWER EQUIPMENT OR EXPLOSIVES ARE TO BE USED FOR EXCAVATION ON THIS PROJECT THE CONTRACTOR MUST:
1) OBTAIN CLEARANCE FROM THE GAS UTILITY PRIOR TO EXCAVATION.
2) TAKE PRECAUTION TO AVOID DAMAGE TO GAS UTILITY INSTALLATIONS.
SEE PROVINCIAL REGULATION 210/72 FOR DETAILS

BID OPPORTUNITY NO. 3-2015

EXISTING	LEGEND - PLAN	PROPOSED	EXISTING	LEGEND - PLAN	PROPOSED	EXISTING	LEGEND - PROFILE	PROPOSED
⊕	HYDRANT	⊕	---	LDS/WWS	---	---	EAST GUTTER	---
⊙	VALVE	⊙	---	WATERMAIN	---	---	CENTER LINE	---
⊚	CURB STOP	⊚	---	GAS	---	---	WEST GUTTER	---
□	CONCRETE	□	---	TRAFFIC SIGNALS	---	---	EAST PROPERTY LINE	---
○	O.L.S.	○	---	CONCRETE SIDEWALK	---	---	WEST PROPERTY LINE	---
○	MANHOLE	○	---	CURB RENEWAL	---	---	WATER SERVICE	---
□	CATCH BASIN	□	---	PATIO STONES	---	---		
△	CURB INLET	△	---	PROPERTY LINE	---	---		
☆	HYDRO POLE	☆	---	SURVEY BAR	---	---		
⊙	TREE	⊙	---	GEODETIC BENCH MARK	---	---	ASPHALT	---
			---	RAMP CURB	---	---	ELEVATIONS	231.000

LOCATION APPROVED
UNDERGROUND STRUCTURES

SUPR. U/G STRUCTURES COMMITTEE DATE

NOTE:
LOCATION OF UNDERGROUND STRUCTURES AS SHOWN ARE BASED ON THE BEST INFORMATION AVAILABLE. BUT NO GUARANTEE IS GIVEN THAT ALL EXISTING UTILITIES ARE SHOWN OR THAT THE GIVEN LOCATIONS ARE EXACT. CONFIRMATION OF EXISTENCE AND EXACT LOCATION OF ALL SERVICES MUST BE OBTAINED FROM THE INDIVIDUAL UTILITIES BEFORE PROCEEDING WITH CONSTRUCTION.

B.M. ELEV.	IB @ N.W. ACADEMY AND RENFREW
	233.910

ENGINEERING DIVISION
TECHNOLOGY SERVICES BRANCH
106 - 1155 PACIFIC AVE

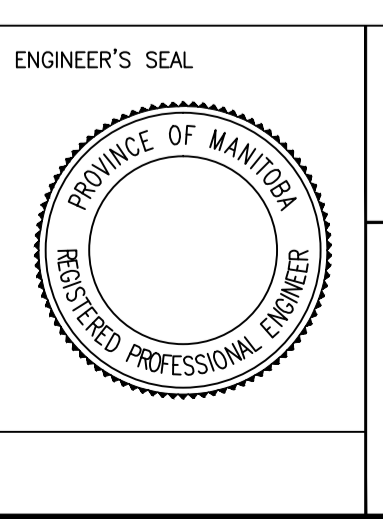
DESIGNED BY D.K.
CHECKED BY R.W./D.T.

DRAWN BY D.K.
APPROVED BY R.T.C.

HOR. SCALE: 1 : 250
VERTICAL: 1 : 10

ISSUED FOR TENDER 03/24/2014 R.C.
NO. REVISIONS DATE BY

DATE 2015/03/24



THE CITY OF WINNIPEG
PUBLIC WORKS DEPARTMENT

RENFREW STREET
FROM ACADEMY RD. TO WELLINGTON CR. S.
CONCRETE RECONSTRUCTION AND ASSOCIATED WORKS
FROM STA. 1+00 TO STA. 2+50

CITY DRAWING NUMBER SE-15-4
SHEET 4 OF 14
1