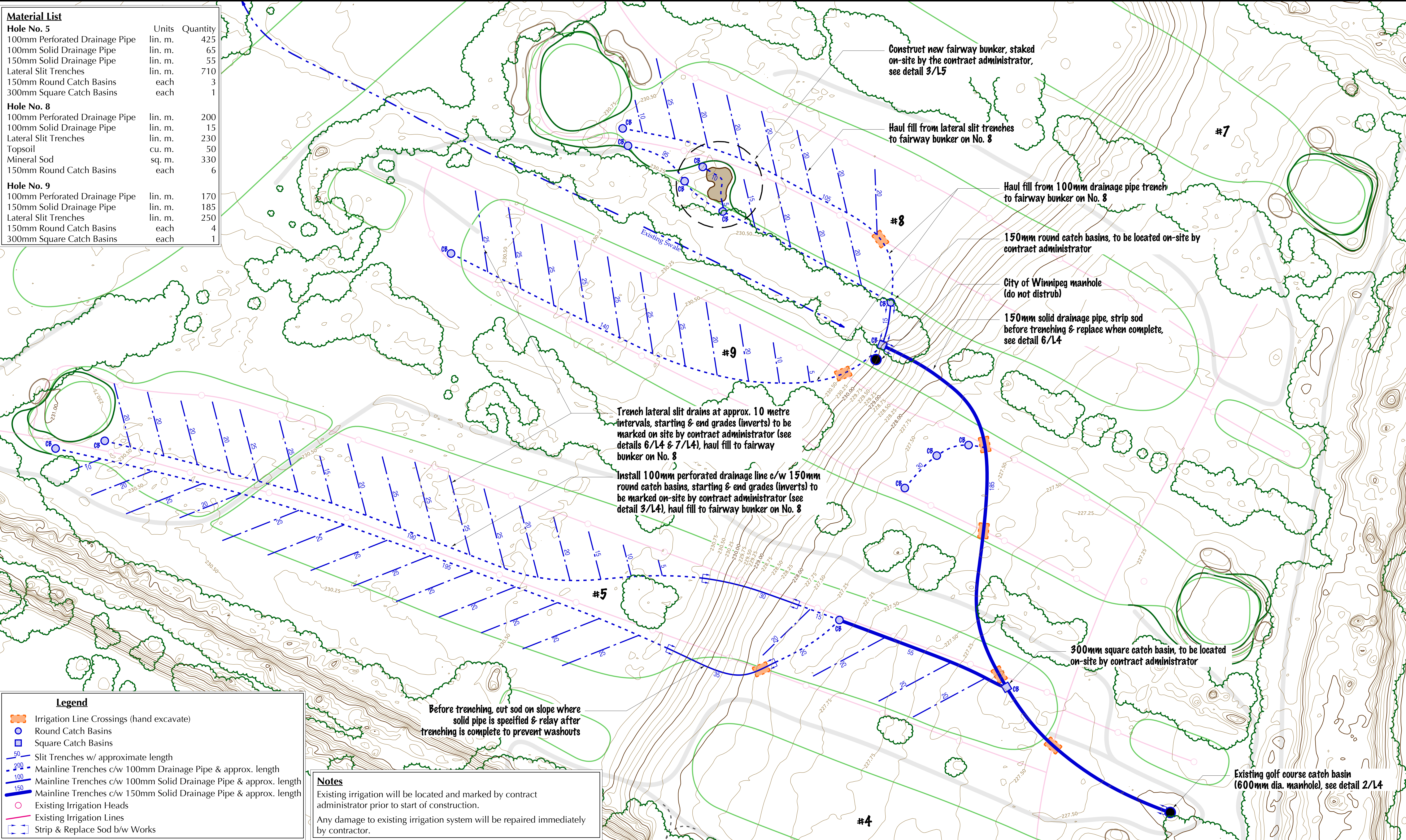


Material List		
Hole No. 5		
100mm Perforated Drainage Pipe	lin. m.	425
100mm Solid Drainage Pipe	lin. m.	65
150mm Solid Drainage Pipe	lin. m.	55
Lateral Slit Trenches	lin. m.	710
150mm Round Catch Basins	each	3
300mm Square Catch Basins	each	1
Hole No. 8		
100mm Perforated Drainage Pipe	lin. m.	200
100mm Solid Drainage Pipe	lin. m.	15
Lateral Slit Trenches	lin. m.	230
Topsoil	cu. m.	50
Mineral Sod	sq. m.	330
150mm Round Catch Basins	each	6
Hole No. 9		
100mm Perforated Drainage Pipe	lin. m.	170
150mm Solid Drainage Pipe	lin. m.	185
Lateral Slit Trenches	lin. m.	250
150mm Round Catch Basins	each	4
300mm Square Catch Basins	each	1

Legend	
	Irrigation Line Crossings (hand excavate)
	Round Catch Basins
	Square Catch Basins
	Slit Trenches w/ approximate length
	Mainline Trenches c/w 100mm Drainage Pipe & approx. length
	Mainline Trenches c/w 100mm Solid Drainage Pipe & approx. length
	Mainline Trenches c/w 150mm Solid Drainage Pipe & approx. length
	Existing Irrigation Heads
	Existing Irrigation Lines
	Strip & Replace Sod b/w Works

Notes
 Existing irrigation will be located and marked by contract administrator prior to start of construction.
 Any damage to existing irrigation system will be repaired immediately by contractor.

Before trenching, cut sod on slope where solid pipe is specified & relay after trenching is complete to prevent washouts



GRANT GOLF
 Golf Course Planning • Design • Construction Management
 162 Woodfield Bay, Winnipeg, Manitoba R3R 3B1
 Ph: (204) 229-2419 • Email: grantgolf@mac.com

Project: **Kildonan Park Golf Course**
 2021 Main St., Winnipeg, MB.
 Drawing Title: **Renovation Plan**

Notes: **Bid Opportunity 302-2015**

Scale: 1 : 480
 (1" = 40'-0")
 North:

Drawn: TK
 Checked: DG
 Proj. No.: 14.08
 Date: Oct. 3, 2014
 Revisions: June 16, 2015

Drawing No.: **L1**