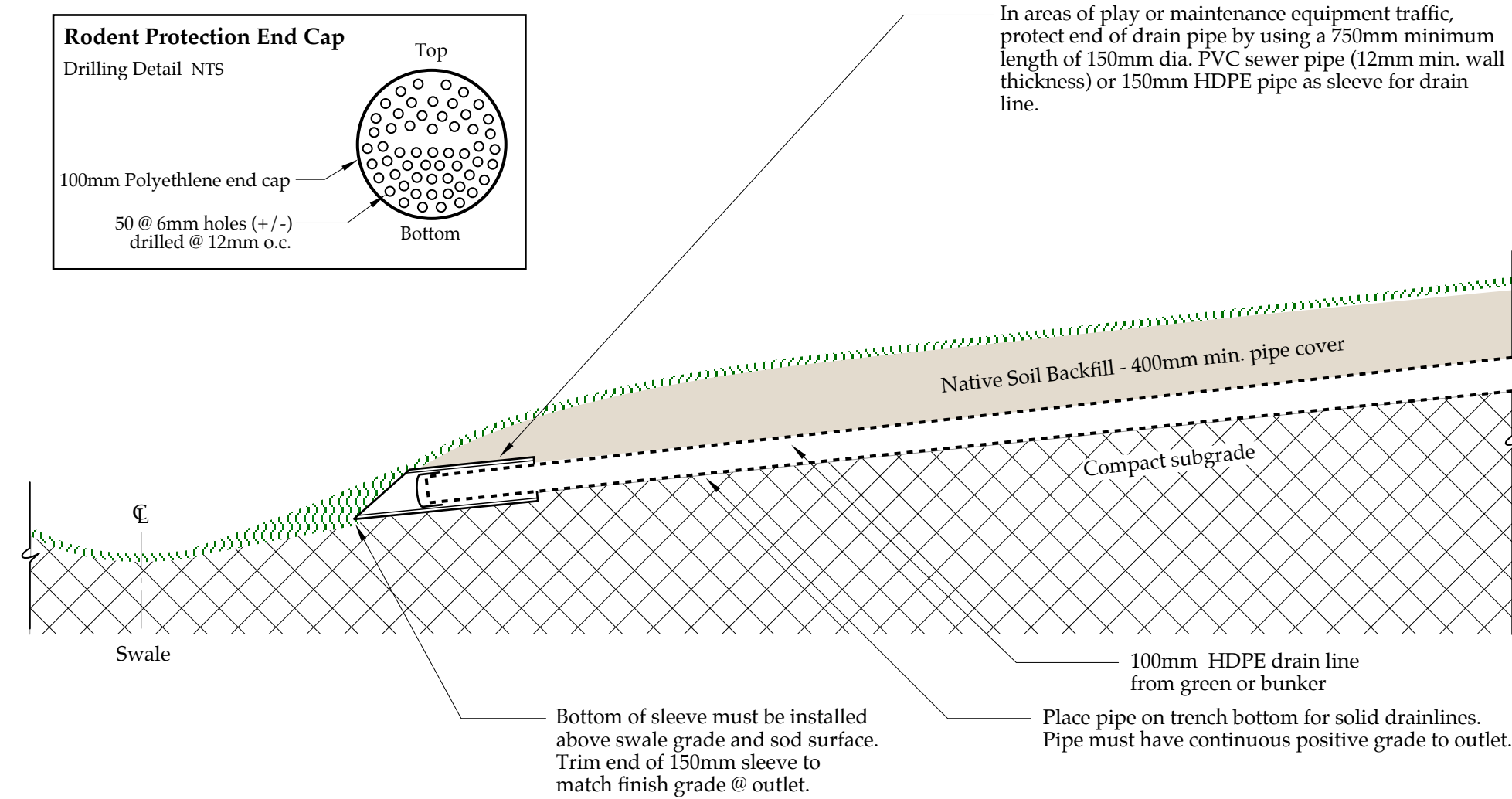
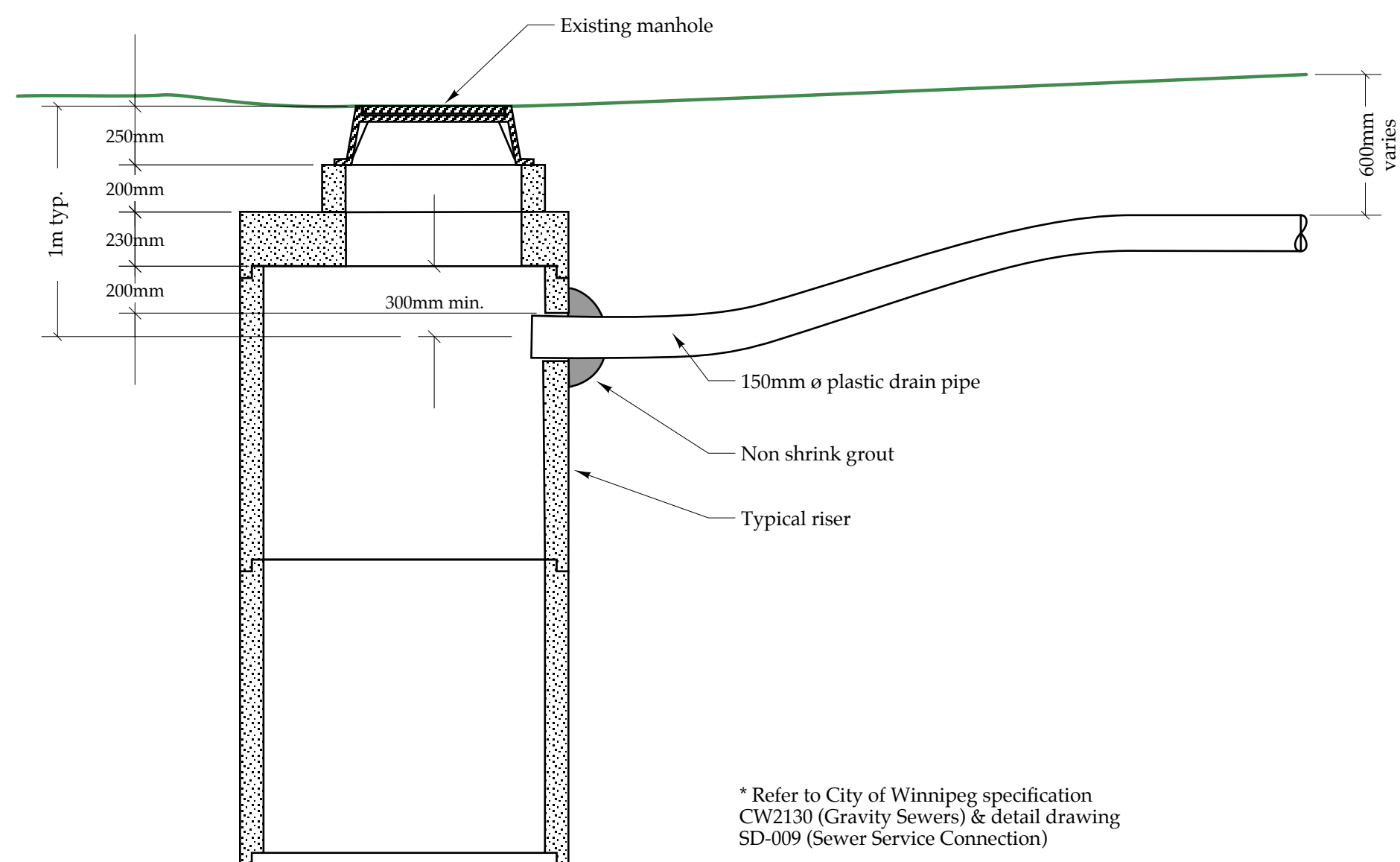


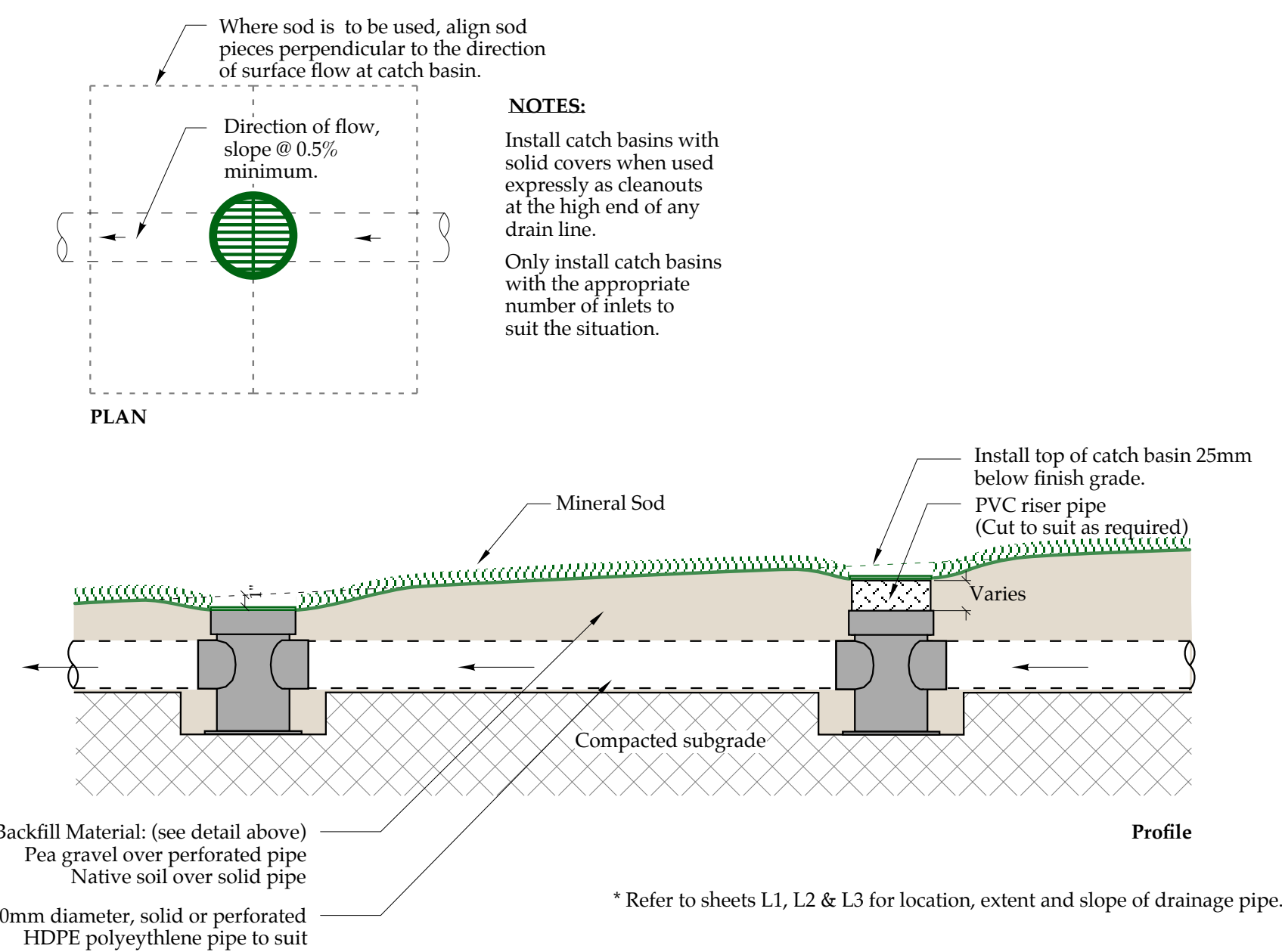
Also Refer to Catch Basin & Drainline, Detail Drawing 3/L4



1
L4 **Drain Outlet Detail Section**
Scale: 1 : 24

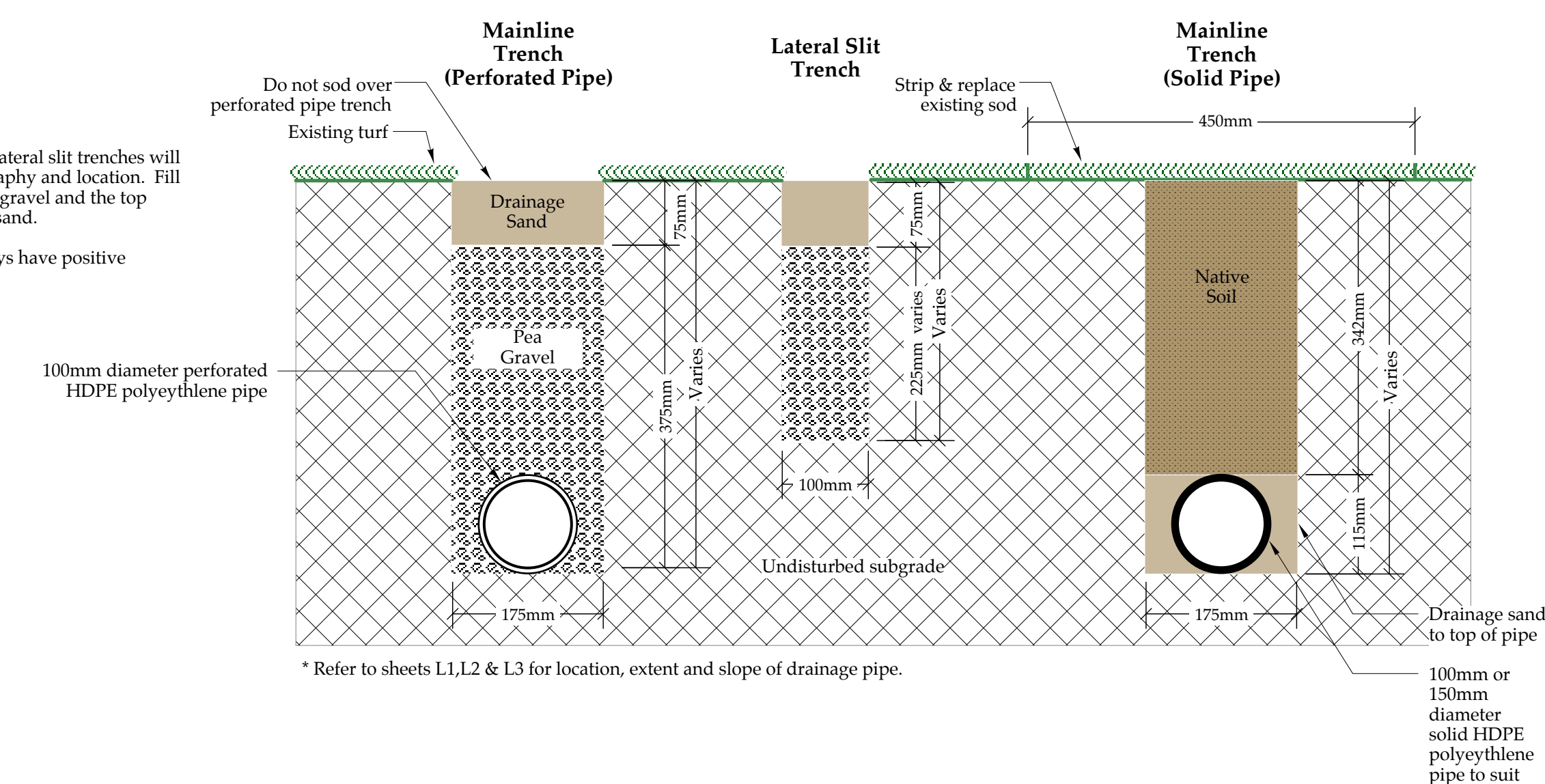


2
L4 **Manhole Tie-in Detail**
Scale: 1 : 24

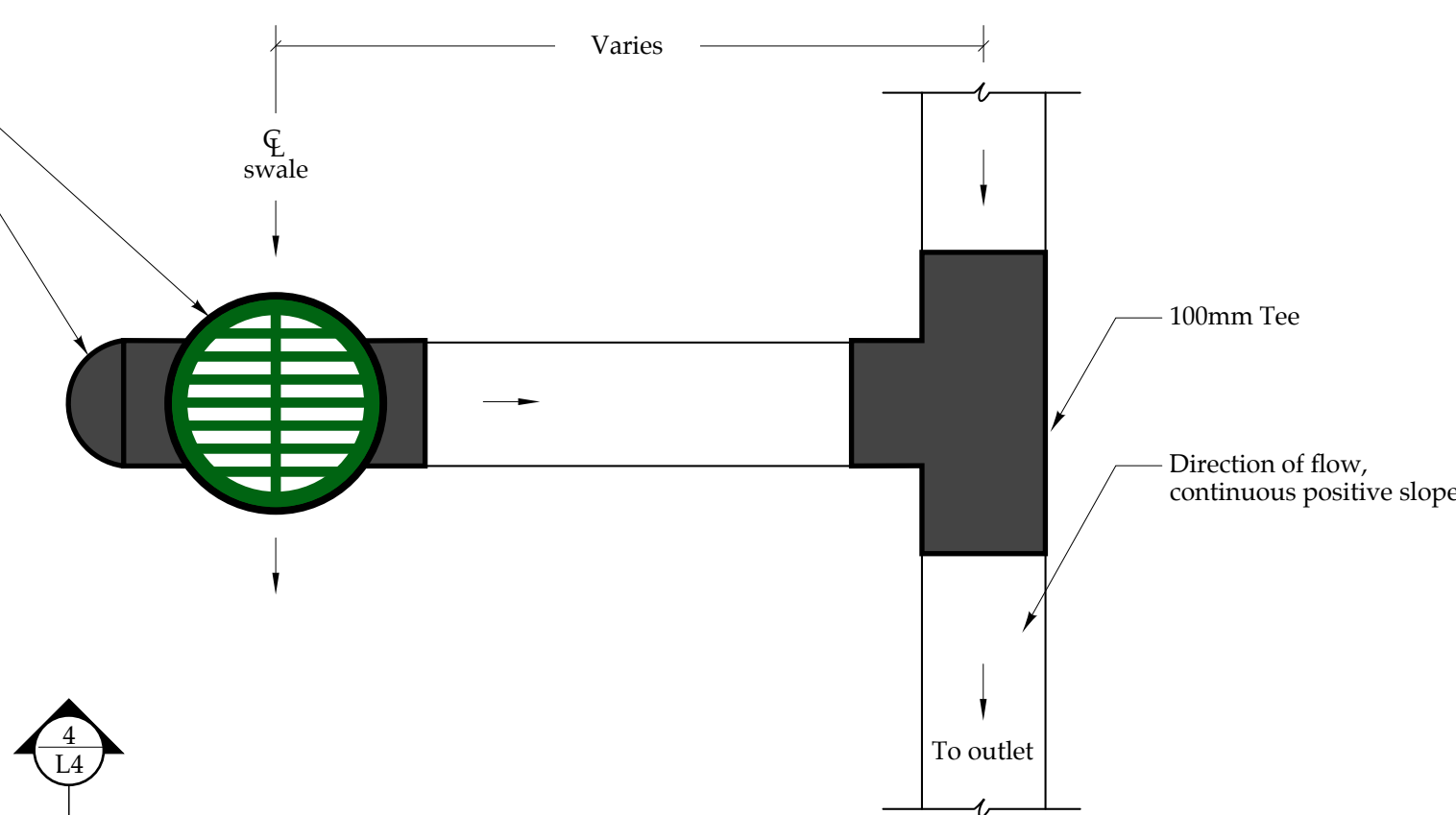


3
L4 **Catch Basin & Drainline Detail Section**
Scale: 1 : 12

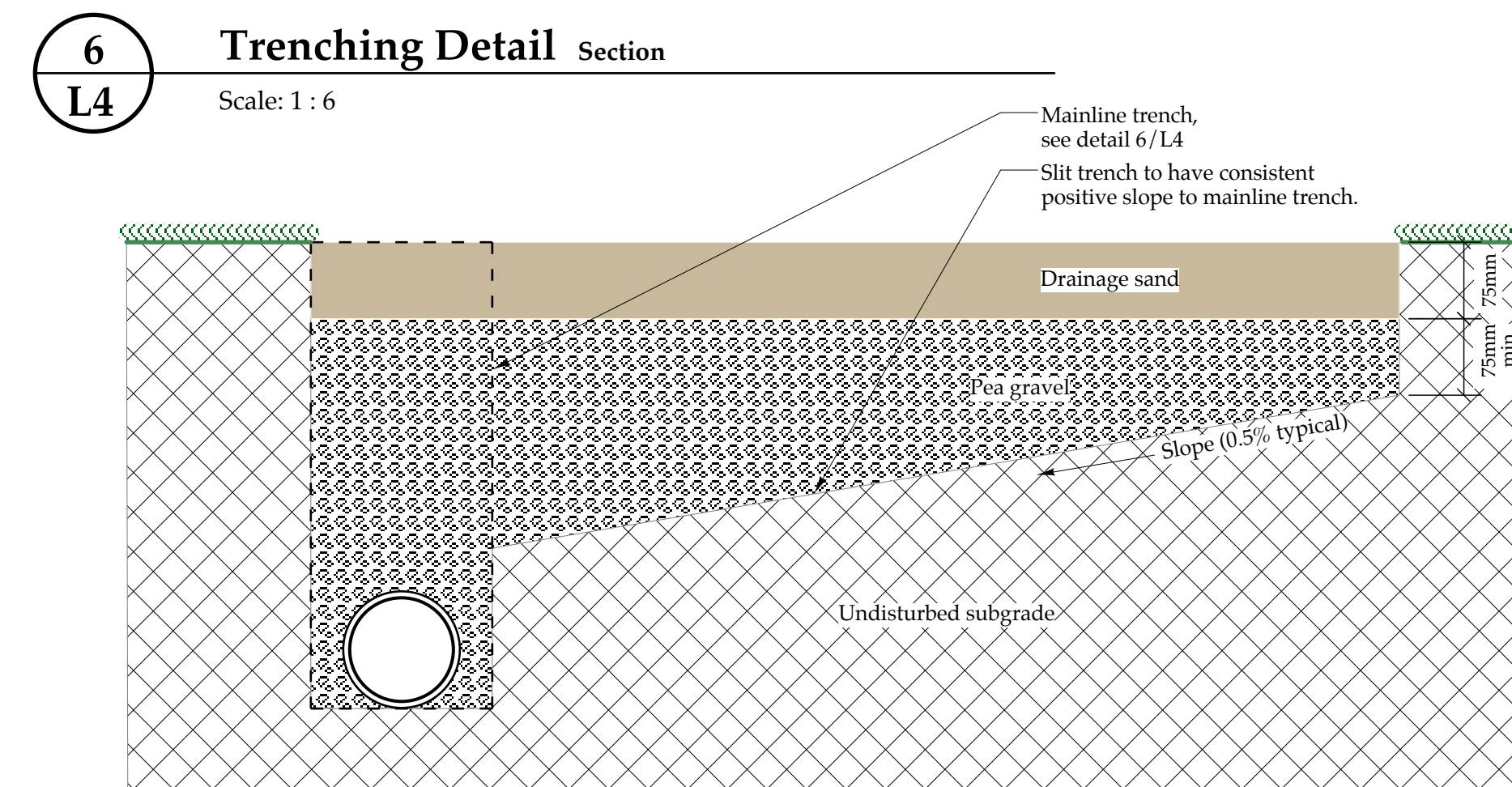
Notes:
Perforated pipe trenches & lateral slit trenches will vary in depth due to topography and location. Fill the trench with washed pea gravel and the top 75mm (3") with washed fill sand.
Bottom of trench must always have positive drainage.



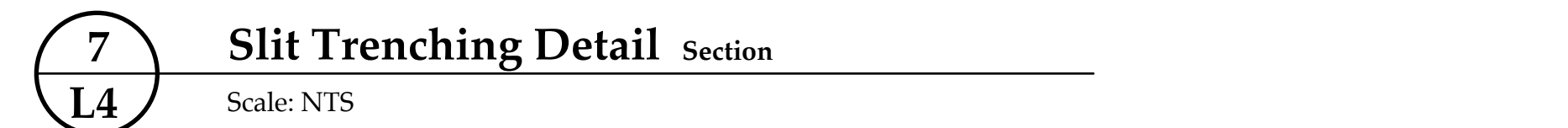
4
L4 **Drainpipe in Swale - Catch Basin Detail Plan**
Scale: NTS



5
L4 **Drainpipe in Swale - Catch Basin Detail Plan**
Scale: 1 : 6



6
L4 **Trenching Detail Section**
Scale: 1 : 6



7
L4 **Slit Trenching Detail Section**
Scale: NTS

GRANT GOLF

Golf Course Planning • Design • Construction Management
162 Woodfield Bay, Winnipeg, Manitoba R3R 3B1
Ph: (204) 229-2419 • Email: grantgolf@mac.com

Project: Kildonan Park Golf Course Windsor Park Golf Course
2021 Main St., Winnipeg, MB. 10 Des Meurons St., Winnipeg, MB.
Drawing Title: Construction Details

Notes: Bid Opportunity 302-2015

Scale: As specified
North:

Drawn: TK
Checked: DG
Proj. No.: 14.08
Date: Mar. 24, 2015
Revisions: June 9, 2015

Drawing No.: L4