

PRELIMINARY
NOT TO BE USED FOR CONSTRUCTION

- CONSTRUCTION NOTES**
- 1) CURB REPLACEMENT AS DIRECTED BY THE CONTRACT ADMINISTRATOR
 - 2) ALL STREET RADIUS CURB UNDER 15M RADIUS SHALL BE REPLACED AS MODIFIED OR AS DIRECTED BY THE CONTRACT ADMINISTRATOR
 - 3) PAVEMENT REPAIRS SHOWN ARE ONLY A REPRESENTATIVE SAMPLE OF THE TENDERED QUANTITIES
 - 4) ASPHALT TIE-INS ON APPROACHES TO BE DETERMINED IN THE FIELD BY THE CONTRACT ADMINISTRATOR.
 - 5) ALL BULLNOSES TO HAVE SLOPED FACE.

- WARNING**
- IF POWER EQUIPMENT OR EXPLOSIVES ARE TO BE USED FOR EXCAVATION ON THIS PROJECT THE CONTRACTOR MUST:
- 1) OBTAIN CLEARANCE FROM THE GAS UTILITY PRIOR TO EXCAVATION.
 - 2) TAKE PRECAUTION TO AVOID DAMAGE TO GAS UTILITY INSTALLATIONS.
- SEE PROVINCIAL REGULATION 210/72 FOR DETAILS

TYPICAL PAVING BAND PATTERN
CROSS SECTION

TYPICAL PAVING BAND PATTERN
N.T.S.

TYPICAL BUILDING ENTRY DETAIL
N.T.S.

METRIC
WHOLE NUMBERS INDICATE MILLIMETRES
DECIMALIZED NUMBERS INDICATE METRES

BID OPPORTUNITY NO. 323-2015

| EXISTING | LEGEND - PLAN | PROPOSED | EXISTING | LEGEND - PLAN | PROPOSED | EXISTING | LEGEND - PLAN | PROPOSED |
|----------|---------------------|----------|----------|-----------------|-----------|----------|---------------------|----------|
| ⊕ | HYDRANT | ⊕ | --- | LDS/WWS | --- | ⊕ | SURVEY BAR | ⊕ |
| ⊕ | VALVE | ⊕ | --- | WATERMAIN | --- | ⊕ | GEODETIC BENCH MARK | |
| ⊕ | CURB STOP | ⊕ | --- | GAS | --- | | | |
| ⊕ | O.L.S. | ⊕ | --- | HYDRO | --- | | | |
| ⊕ | MANHOLE | ⊕ | --- | M.T.S. | --- | | | |
| ⊕ | CATCH BASIN | ⊕ | --- | TRAFFIC SIGNALS | --- | | | |
| ⊕ | CURB INLET | ⊕ | --- | STEAM HEAT | --- | | | |
| ⊕ | HYDRO POLE | ⊕ | --- | CURB RENEWAL | --- | | | |
| ⊕ | TRAFFIC SIGNAL POLE | ⊕ | --- | RAMP CURB | --- | | | |
| | CONCRETE | | 231.000 | ELEVATIONS | [231.000] | | | |
| | CONCRETE SIDEWALK | | | PROPERTY LINE | | | | |

LOCATION APPROVED
UNDERGROUND STRUCTURES

SUPR. U/G STRUCTURES COMMITTEE DATE

NOTE:
LOCATION OF UNDERGROUND STRUCTURES AS SHOWN ARE BASED ON THE BEST INFORMATION AVAILABLE. BUT NO GUARANTEE IS GIVEN THAT ALL EXISTING UTILITIES ARE SHOWN OR THAT THE GIVEN LOCATIONS ARE EXACT. CONFIRMATION OF EXISTENCE AND EXACT LOCATION OF ALL SERVICES MUST BE OBTAINED FROM THE INDIVIDUAL UTILITIES BEFORE PROCEEDING WITH CONSTRUCTION.

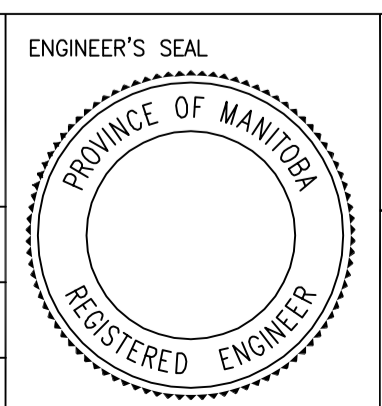
| NO. | REVISIONS | DATE | BY |
|-----|-----------|------|----|
| | | | |

ENGINEERING DIVISION
TECHNOLOGY SERVICES BRANCH
106 - 1155 PACIFIC AVE

DESIGNED BY: M.M./C.R.H.
CHECKED BY: R.W.
APPROVED BY: [Signature]

HOR. SCALE: 1 : 150
VERTICAL: [Blank]

DATE: 2015/06/09



THE CITY OF WINNIPEG
PUBLIC WORKS DEPARTMENT

BANNATYNE AVENUE
FROM KING STREET TO ALBERT STREET
SIDEWALK RENEWAL AND ASSOCIATED WORKS

CITY DRAWING NUMBER SE-15-27
SHEET 1 OF 2
1