

- REFERENCE NOTES**
- A. PAVEMENT DIMENSIONS ARE TO BACK OF CURB
 - B. BASELINE IS CENTRE LINE RIGHT-OF-WAY
 - C. PROPERTY LINES OBTAINED FROM CITY OF WINNIPEG L.B.I.S., AND NO SCALE FACTOR WAS APPLIED
 - D. REFER TO AECOM FIELD BOOK NO. 4847

- CONSTRUCTION NOTES**
1. REMOVE EXISTING ASPHALT PAVEMENT AND PLACE NEW TYPE 1A ASPHALTIC PAVEMENT (85mm AVG)
 2. REMOVE EXISTING CONCRETE PAVEMENT AND CONSTRUCT NEW 200mm REINFORCED CONCRETE PAVEMENT
 3. CONSTRUCT NEW RAMP CURB (10mm REVEAL HT, INTEGRAL)
 4. RENEW BARRIER CURB (100mm REVEAL HT, DOWELLED)
 5. CONSTRUCT NEW MODIFIED BARRIER CURB (150mm REVEAL HT, DOWELLED)
 6. INSTALL NEW CURB AND GUTTER INLET c/w CATCH PIT (SD-023) AND CONNECT TO EXISTING CATCH BASIN
 7. REMOVE EXISTING FRAME AND COVER AND PLACE NEW FRAME AND GRATED COVER (AP-004/AP-006)
 8. RENEW EXISTING 100mm CONCRETE SIDEWALK
 9. ADJUST EXISTING WATER VALVE TO GRADE
 10. ADJUST EXISTING MANHOLE/CATCH BASIN TO GRADE
 11. REMOVE EXISTING FRAME AND COVER AND PLACE NEW FRAME AND COVER (AP-004/AP-005)
 12. INSTALL NEW CAST IRON RISER RING
 13. REMOVE EXISTING PATIO BLOCK BUS PAD AND CONSTRUCT NEW 100mm CONCRETE SIDEWALK
 14. CONSTRUCT BARRIER CURB (100mm REVEAL HT, SEPARATE)
 15. REMOVE EXISTING CONCRETE APPROACH

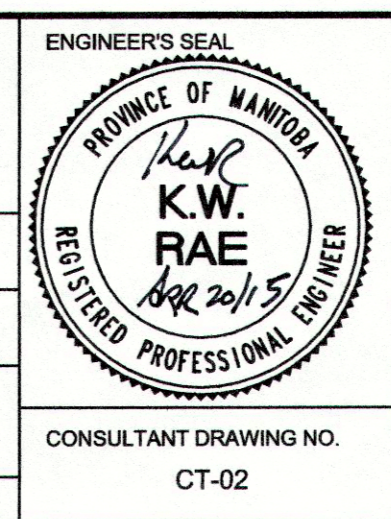


METRIC
WHOLE NUMBERS INDICATE MILLIMETRES
DECIMAL NUMBERS INDICATE METRES

EXISTING	LEGEND - PLAN	PROPOSED	EXISTING	LEGEND - PLAN	PROPOSED	EXISTING	LEGEND - PROFILE	PROPOSED
	WATERMAIN HYDRANT			CONCRETE			NORTH/WEST GUTTER	
	VALVE			ASPHALT			SOUTH/EAST GUTTER	
	LAND DRAINAGE SEWER			PROPERTY LINE			N/W PROPERTY LINE	
	WASTEWATER SEWER			SURVEY BAR			S/E PROPERTY LINE	
	MANHOLE			ELEVATION			TREE	
	CATCH BASIN			SIDEWALK RAMP			CONCRETE SIDEWALK	
	CATCH PIT			FENCE				
	JUNCTION							
	CULVERT							
	GAS							

LOCATION APPROVED UNDERGROUND STRUCTURES	B.M. 14-039 ELEV. 237.342	E side of Cavalier Dr., in median of Hamilton Ave., 1.0m on top of 0.05m dia x 2.4 m iron pipe, 2.4 m E. of E.L. of Cavalier Dr. & 14m S. of N.L. of Hamilton Ave.
SUPV. U/G STRUCTURES COMMITTEE	DATE	
NOTE:		
LOCATION OF UNDERGROUND STRUCTURES AS SHOWN ARE BASED ON THE BEST INFORMATION AVAILABLE. BUT NO GUARANTEE IS GIVEN THAT ALL EXISTING UTILITIES ARE SHOWN OR THAT THE GIVEN LOCATIONS ARE EXACT. CONFIRMATION OF EXISTENCE AND EXACT LOCATION OF ALL SERVICES MUST BE OBTAINED FROM THE INDIVIDUAL UTILITIES BEFORE PROCEEDING WITH CONSTRUCTION.		

DESIGNED BY	BC/SS	CHECKED BY	KWR
DRAWN BY	PB/RT	APPROVED BY	142.
HOR. SCALE:	1:250	RELEASED FOR CONSTRUCTION BY:	
VERTICAL:	1:10	DATE	APR 20/15
NO. REVISIONS		DATE	
0	ISSUED FOR TENDER	04/21/2015	BC
A	ISSUED FOR REVIEW	04/14/2015	BC



THE CITY OF WINNIPEG
PUBLIC WORKS DEPARTMENT
ENGINEERING DIVISION

2015 LOCAL STREET RENEWAL PROGRAM

CAVALIER DRIVE- HILLARY CRESCENT TO HEDGES BAY (S LEG)
PAVEMENT REHABILITATION
STATION 0+100 TO STATION 0+200

CITY DRAWING NUMBER
SHEET 02 OF 20

CONSULTANT DRAWING NO. CT-02