

REFERENCE NOTES

- A. PAVEMENT DIMENSIONS ARE TO BACK OF CURB
- B. BASELINE IS CENTRE LINE RIGHT-OF-WAY
- C. PROPERTY LINES OBTAINED FROM CITY OF WINNIPEG L.B.I.S., AND NO SCALE FACTOR WAS APPLIED
- D. REFER TO AECOM FIELD BOOK NO. 4844

CONSTRUCTION NOTES

- 1. PLACE NEW TYPE 1A ASPHALTIC PAVEMENT (85mm AVG)
- 2. REMOVE EXISTING CONCRETE PAVEMENT AND CONSTRUCT NEW 150mm REINFORCED CONCRETE PAVEMENT c/w 85mm AVG. TYPE 1A ASPHALTIC PAVEMENT
- 3. REMOVE EXISTING CONCRETE PAVEMENT AND CONSTRUCT NEW 150mm REINFORCED CONCRETE PAVEMENT
- 4. CONSTRUCT NEW RAMP CURB (10mm REVEAL HT, INTEGRAL)
- 5. RENEW BARRIER CURB (100mm REVEAL HT, DOWELLED)
- 6. INSTALL NEW CURB AND GUTTER INLET c/w CATCH PIT (SD-023) AND CONNECT TO EXISTING CATCH BASIN
- 7. CONSTRUCT NEW MODIFIED BARRIER CURB (100mm REVEAL HT, INTEGRAL)
- 8. RENEW EXISTING 100mm CONCRETE SIDEWALK
- 9. ADJUST EXISTING WATER VALVE TO GRADE
- 10. CONSTRUCT BARRIER CURB (100mm REVEAL HT, SEPARATE.)



METRIC
WHOLE NUMBERS INDICATE MILLIMETRES
DECIMALIZED NUMBERS INDICATE METRES

EXISTING	LEGEND - PLAN	PROPOSED	EXISTING	LEGEND - PLAN	PROPOSED	EXISTING	LEGEND - PROFILE	PROPOSED
150 mm W.M.	WATERMAIN	150 mm W.M.	HYDRO	---	---	X	C PROFILE	---
300mm L.D.S.	LAND DRAINAGE SEWER	300mm L.D.S.	CONCRETE	---	---	□	NORTH/WEST GUTTER	---
250mm W.W.S.	WASTEWATER SEWER	250mm W.W.S.	ASPHALT	---	---	◇	SOUTH/EAST GUTTER	---
○	MANHOLE	●	PROPERTY LINE	---	---	◇	N/W PROPERTY LINE	---
□	CATCH BASIN	■	SURVEY BAR	---	---	○	S/E PROPERTY LINE	---
▽	CATCH PIT	▽	ELEVATION	(35.750)				
+	JUNCTIONS	+	TREE	---	---			
---	CULVERT	---	SIDEWALK RAMP	---	---			
---	GAS	---	CONCRETE SIDEWALK	---	---			
---		---	FENCE	---	---			

LOCATION APPROVED UNDERGROUND STRUCTURES

SUPV. U/G STRUCTURES COMMITTEE DATE

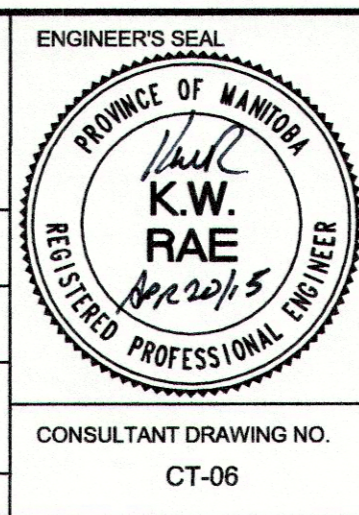
NOTE:
LOCATION OF UNDERGROUND STRUCTURES AS SHOWN ARE BASED ON THE BEST INFORMATION AVAILABLE, BUT NO GUARANTEE IS GIVEN THAT ALL EXISTING UTILITIES ARE SHOWN OR THAT THE GIVEN LOCATIONS ARE EXACT. CONFIRMATION OF EXISTENCE AND EXACT LOCATION OF ALL SERVICES MUST BE OBTAINED FROM THE INDIVIDUAL UTILITIES BEFORE PROCEEDING WITH CONSTRUCTION.

B.M. 83R585	ELEV. 238.985		
0	ISSUED FOR TENDER	04/21/2015	BC
A	ISSUED FOR REVIEW	04/14/2015	BC
NO.	REVISIONS	DATE	BY

AECOM

DESIGNED BY: BC/SS
DRAWN BY: PB/RT
HOR. SCALE: 1:250
VERTICAL: 1:10

CHECKED BY: KWR
APPROVED BY: [Signature]
RELEASED FOR CONSTRUCTION BY: [Signature] APR 2015



THE CITY OF WINNIPEG
PUBLIC WORKS DEPARTMENT
ENGINEERING DIVISION

2015 LOCAL STREET RENEWAL PROGRAM

DOHANEY CRESCENT: ACHESON DRIVE TO HAMILTON AVENUE
PAVEMENT REHABILITATION
STATION 0+220 TO HAMILTON AVENUE

CITY DRAWING NUMBER: SHEET 06 OF 20

CONSULTANT DRAWING NO. CT-06