

- REFERENCE NOTES**
- A. PAVEMENT DIMENSIONS ARE TO BACK OF CURB
 - B. BASELINE IS CENTRE LINE RIGHT-OF-WAY
 - C. PROPERTY LINES OBTAINED FROM CITY OF WINNIPEG L.B.I.S., AND NO SCALE FACTOR WAS APPLIED
 - D. REFER TO AECOM FIELD BOOK NO. 4850

- CONSTRUCTION NOTES**
1. PLACE NEW TYPE 1A ASPHALTIC PAVEMENT (85mm AVG)
 2. REMOVE EXISTING CONCRETE PAVEMENT AND CONSTRUCT NEW 150mm REINFORCED CONCRETE PAVEMENT
 3. CONSTRUCT NEW RAMP CURB (10mm REVEAL HT, INTEGRAL)
 4. CONSTRUCT BARRIER CURB (100mm REVEAL HT, SEPARATE)
 5. CONSTRUCT NEW MODIFIED BARRIER CURB (150mm REVEAL HT, DOWELLED)
 6. INSTALL NEW CURB AND GUTTER INLET c/w CATCH PIT (SD-023) AND CONNECT TO EXISTING CATCH BASIN
 7. RENEW EXISTING 100mm CONCRETE SIDEWALK
 8. ADJUST EXISTING WATER VALVE TO GRADE
 9. ADJUST EXISTING MANHOLE/CATCH BASIN TO GRADE
 10. REMOVE EXISTING FRAME AND COVER AND PLACE NEW FRAME AND COVER (AP-004/AP-005)
 11. INSTALL NEW CAST IRON RISER RING
 12. REMOVE EXISTING MOUNTABLE CURB
 13. REMOVE EXISTING CATCH PIT AND INSTALL NEW CURB AND GUTTER INLET c/w CATCH PIT (SD-023) AND CONNECT TO EXISTING LEED



METRIC
WHOLE NUMBERS INDICATE MILLIMETRES
DECIMALIZED NUMBERS INDICATE METRES

150 mm W.M.		150 mm W.M.		HYDRO		C PROFILE	
◇	WATERMAIN	+	HYDRO	---	M.T.S.	---	NORTH/WEST GUTTER
⊕	HYDRANT	⊕	CONCRETE	---	CONCRETE	---	SOUTH/EAST GUTTER
⊙	VALVE	⊙	ASPHALT	---	PROPERTY LINE	---	N/W PROPERTY LINE
300mm L.D.S.	LAND DRAINAGE SEWER	300mm L.D.S.	PROPERTY LINE	---	SURVEY BAR	---	S/E PROPERTY LINE
250mm W.W.S.	WASTEWATER SEWER	250mm W.W.S.	ELEVATION	(35.750)	TREE		
○	MANHOLE	⊕	SIDEWALK RAMP				
□	CATCH BASIN	⊕	CONCRETE SIDEWALK				
▽	CATCH PIT	⊕	FENCE				
+	JUNCTIONS						
---	CULVERT						
---	GAS						
---	EXISTING	---	PROPOSED	---	EXISTING	---	PROPOSED

LOCATION APPROVED UNDERGROUND STRUCTURES

SUPV. U/G STRUCTURES COMMITTEE DATE

NOTE:
LOCATION OF UNDERGROUND STRUCTURES AS SHOWN ARE BASED ON THE BEST INFORMATION AVAILABLE, BUT NO GUARANTEE IS GIVEN THAT ALL EXISTING UTILITIES ARE SHOWN OR THAT THE GIVEN LOCATIONS ARE EXACT. CONFIRMATION OF EXISTENCE AND EXACT LOCATION OF ALL SERVICES MUST BE OBTAINED FROM THE INDIVIDUAL UTILITIES BEFORE PROCEEDING WITH CONSTRUCTION.

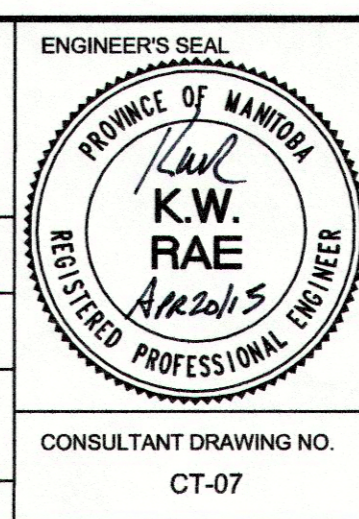
B.M. 14 - 25
ELEV. 240.636

S. side Athlone Dr. @ Prairie View Rd., Tbl. in N. Conc. foundation of Athlone School, 43.5m E. & 0.2 m below brick of N.W. Cor. of school.

0	ISSUED FOR TENDER	04/21/2015	BC
A	ISSUED FOR REVIEW	04/14/2015	BC
NO.	REVISIONS	DATE	BY

AECOM

DESIGNED BY	BC/SS	CHECKED BY	KWR
DRAWN BY	PB/RT	APPROVED BY	KR.
HOR. SCALE:	1:250	RELEASED FOR CONSTRUCTION BY:	
VERTICAL:	1:10	DATE	APR 20/15



THE CITY OF WINNIPEG
PUBLIC WORKS DEPARTMENT
ENGINEERING DIVISION

2015 LOCAL STREET RENEWAL PROGRAM

ATHLONE DRIVE - RONALD STREET TO PRAIRIE VIEW ROAD
PAVEMENT REHABILITATION
RONALD STREET TO STATION 0+140

CITY DRAWING NUMBER
SHEET 07 OF 20

CONSULTANT DRAWING NO. CT-07