

- REFERENCE NOTES**
- PAVEMENT DIMENSIONS ARE TO BACK OF CURB
 - BASELINE IS CENTRE LINE RIGHT-OF-WAY
 - PROPERTY LINES OBTAINED FROM CITY OF WINNIPEG L.B.I.S., AND NO SCALE FACTOR WAS APPLIED
 - REFER TO AECOM FIELD BOOK NO. 4848

- CONSTRUCTION NOTES**
- REMOVE EXISTING ASPHALT PAVEMENT AND PLACE NEW TYPE 1A ASPHALTIC PAVEMENT (85mm AVG)
 - REMOVE EXISTING CONCRETE PAVEMENT AND CONSTRUCT NEW 150mm REINFORCED CONCRETE PAVEMENT c/w 85mm TYPE 1A ASPHALTIC PAVEMENT
 - REMOVE EXISTING MOUNTABLE CURB
 - CONSTRUCT BARRIER CURB (100mm REVEAL HT, DOWELLED)
 - CONSTRUCT BARRIER CURB (100mm REVEAL HT, SEPARATE)
 - CONSTRUCT NEW RAMP CURB (10mm REVEAL HT, INTEGRAL)
 - CONSTRUCT NEW MODIFIED BARRIER CURB (100mm REVEAL HT, DOWELLED)
 - RENEW EXISTING 100mm CONCRETE SIDEWALK
 - INSTALL NEW DETECTABLE WARNING SURFACE TILE
 - ADJUST EXISTING WATER VALVE TO GRADE
 - ADJUST EXISTING MAN-HOLE/CATCH BASIN TO GRADE
 - REMOVE EXISTING FRAME AND COVER AND PLACE NEW FRAME AND COVER (AP-004/AP-005)
 - INSTALL NEW CAST IRON RISER RING



METRIC
WHOLE NUMBERS INDICATE MILLIMETRES
DECIMALIZED NUMBERS INDICATE METRES

EXISTING	LEGEND - PLAN	PROPOSED	EXISTING	LEGEND - PLAN	PROPOSED	EXISTING	LEGEND - PROFILE	PROPOSED
150 mm W.M.	WATERMAIN	150 mm W.M.	HYDRO	— x —	— x —	— x —	— x —	— x —
300mm L.D.S.	LAND DRAINAGE SEWER	300mm L.D.S.	CONCRETE	—	—	—	—	—
250mm W.W.S.	WASTEWATER SEWER	250mm W.W.S.	ASPHALT	—	—	—	—	—
○	MANHOLE	●	PROPERTY LINE	—	—	—	—	—
□	CATCH BASIN	■	SURVEY BAR	—	—	—	—	—
▽	CATCH PIT	▽	ELEVATION	(35.750)				
—	JUNCTIONS	—	TREE	—	—	—	—	—
—	CULVERT	—	SIDEWALK RAMP	—	—	—	—	—
—	GAS	—	CONCRETE SIDEWALK	—	—	—	—	—
			FENCE	—	—	—	—	—

LOCATION APPROVED UNDERGROUND STRUCTURES

SUPV. U/G STRUCTURES COMMITTEE DATE

NOTE:
LOCATION OF UNDERGROUND STRUCTURES AS SHOWN ARE BASED ON THE BEST INFORMATION AVAILABLE, BUT NO GUARANTEE IS GIVEN THAT ALL EXISTING UTILITIES ARE SHOWN OR THAT THE GIVEN LOCATIONS ARE EXACT. CONFIRMATION OF EXISTENCE AND EXACT LOCATION OF ALL SERVICES MUST BE OBTAINED FROM THE INDIVIDUAL UTILITIES BEFORE PROCEEDING WITH CONSTRUCTION.

B.M. 14 - 11	N.E. Cor. Woodbridge Rd. & Assiniboine Cresc., Tblt.		
ELEV. 236.601	In W. Conc. Foundation No. 171 Woodbridge Rd., 3.1 m N. & 0.2 m below stoop of S.W. Cor. of dwelling.		
0	ISSUED FOR TENDER	04/21/2015	BC
A	ISSUED FOR REVIEW	04/14/2015	BC
NO.	REVISIONS	DATE	BY

AECOM

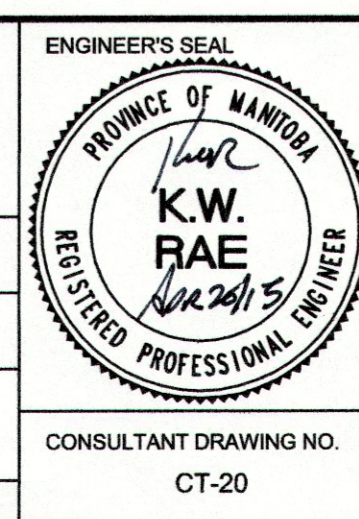
DESIGNED BY: BC/SS
DRAWN BY: PB/RT

CHECKED BY: KWR
APPROVED BY: KWR

HOR. SCALE: 1:250
VERTICAL: 1:10

RELEASED FOR CONSTRUCTION BY: [Signature]

DATE: APR 21, 2015



THE CITY OF WINNIPEG
PUBLIC WORKS DEPARTMENT
ENGINEERING DIVISION

2015 LOCAL STREET RENEWAL PROGRAM

THOMPSON DRIVE- ASSINIBOINE CRESCENT TO PORTAGE AVENUE
PAVEMENT REHABILITATION
STATION 0+140 TO PORTAGE AVENUE

CITY DRAWING NUMBER: SHEET 20 OF 20

CONSULTANT DRAWING NO. CT-20