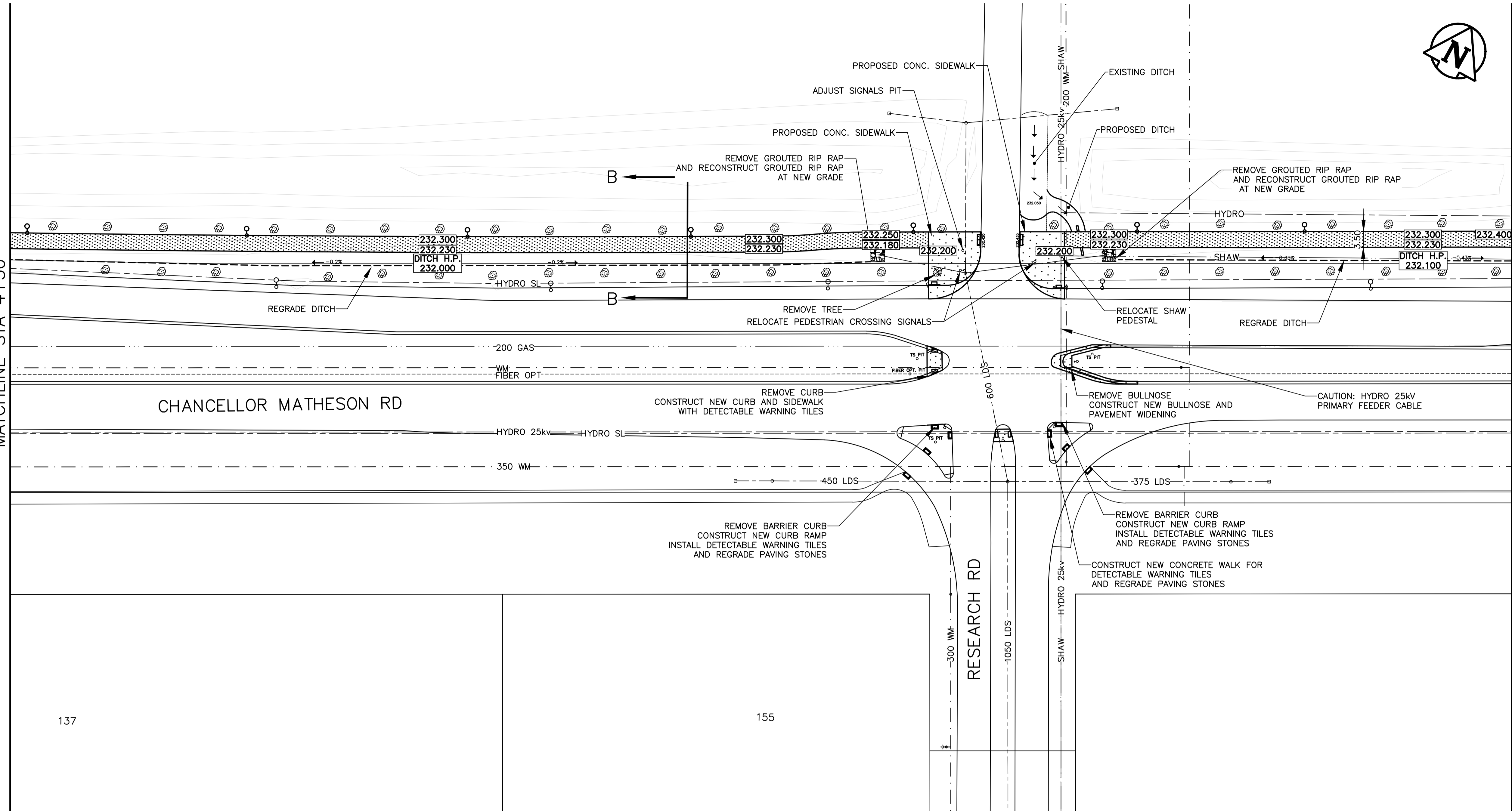


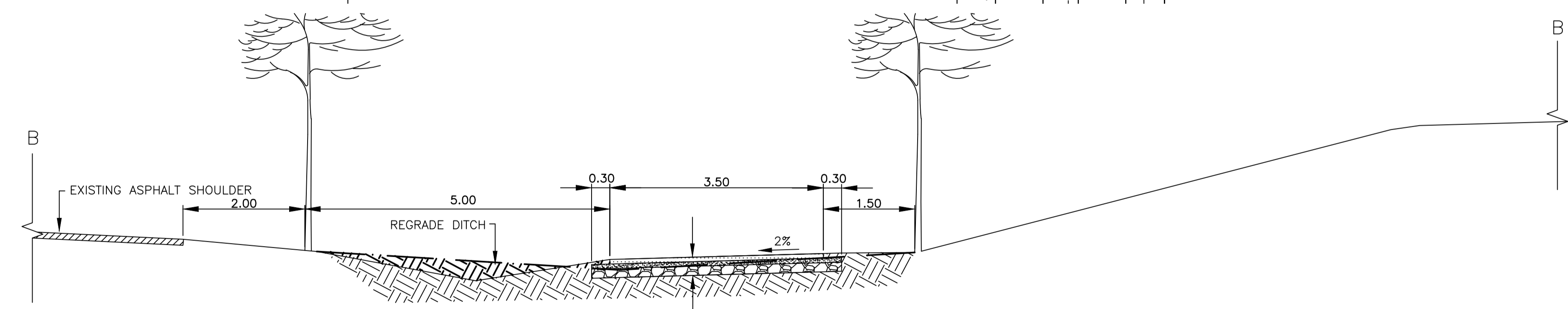
MATCHLINE STA 4+50

MATCHLINE STA 7+80



CHANCELLOR MATHESON RD

RESEARCH RD



CROSS SECTION B-B  
N.T.S.

75 mm - TYPE 1A ASPHALT SURFACE  
75 mm - BASE COURSE  
150 mm - 50 mm.  $\phi$  SUBBASE  
GEOTEXTILE  
COMPACTED SUBGRADE

**PRELIMINARY**  
NOT TO BE USED FOR  
CONSTRUCTION

**WARNING**  
IF POWER EQUIPMENT OR EXPLOSIVES ARE TO BE  
USED FOR EXCAVATION ON THIS PROJECT THE  
CONTRACTOR MUST:  
1) OBTAIN CLEARANCE FROM THE GAS UTILITY  
PRIOR TO EXCAVATION.  
2) TAKE PRECAUTION TO AVOID DAMAGE TO GAS  
UTILITY INSTALLATIONS.  
SEE PROVINCIAL REGULATION 210/72 FOR DETAILS

METRIC  
WHOLE NUMBERS INDICATE MILLIMETRES  
DECIMALIZED NUMBERS INDICATE METRES

BID OPPORTUNITY NO. 335-2015

	DRAINAGE ARROW			LDS/WWS					
	ASPHALT			WATERMAIN					
	CONCRETE			GAS					
	O.L.S.			MTS/SHAW					
	MANHOLE			HYDRO					
	CATCH BASIN			FIBER OPTIC CABLE					
	TRAFFIC SIGNAL POLE			DITCH CL					
	ELEVATIONS			DRAINAGE SWALE					
	PROPERTY LINE								
	RAMP CURB								
	TREE								
	EXISTING		PROPOSED	LEGEND - PLAN		PROPOSED		EXISTING	LEGEND - PROFILE

LOCATION APPROVED  
UNDERGROUND STRUCTURES

SUPR. U/G STRUCTURES  
COMMITTEE DATE

NOTE:  
LOCATION OF UNDERGROUND STRUCTURES AS  
SHOWN ARE BASED ON THE BEST INFORMATION  
AVAILABLE. BUT NO GUARANTEE IS GIVEN  
THAT ALL EXISTING UTILITIES ARE SHOWN OR  
THAT THE GIVEN LOCATIONS ARE EXACT.  
CONFIRMATION OF EXISTENCE AND EXACT  
LOCATION OF ALL SERVICES MUST BE  
OBTAINED FROM THE INDIVIDUAL UTILITIES  
BEFORE PROCEEDING WITH CONSTRUCTION.

B.M.	MH-310 m. W. OF CL UNIVERSITY CR
ELEV.	232.918
NO.	REVISIONS
	DATE BY

<b>ENGINEERING DIVISION TECHNOLOGY SERVICES BRANCH 106 - 1155 PACIFIC AVE</b>			
DESIGNED BY	D.K. & G.K.	CHECKED BY	R.M. & S.M.
DRAWN BY	D.K. & G.K.	APPROVED BY	
HOR. SCALE:	1 : 500	DATE	2015/04/07
VERTICAL:			

ENGINEER'S SEAL

**THE CITY OF WINNIPEG**  
PUBLIC WORKS DEPARTMENT

**CHANCELLOR MATHESON ACTIVE  
TRANSPORTATION PATHWAY**  
FROM PEMBINA HWY TO UNIVERSITY CRES  
ASPHALT A.T. PATH AND ASSOCIATED WORKS  
FROM STA. 4+50 TO STA. 7+80

CITY DRAWING NUMBER SE-15-21	SHEET 2 OF 4
2	